



ECONOMIC INDICATOR

A QUARTERLY REPORT

JANUARY - MARCH 2008



DEPARTMENT OF COMMERCE
COMMONWEALTH OF THE NORTHERN MARIANA ISLANDS
CALLER BOX 10007 CK
SAIPAN, MP. 96950
TEL NO: (670) 664 - 3000

MESSAGE FROM THE SECRETARY

We are pleased to present the First Quarter issue of the Economic Indicator, depicting the social and economic conditions of the Commonwealth of the Northern Mariana Islands (CNMI), covering January through March 2008.

This publication is made possible by data researched and tabulated under the Central Statistics Division, Department of Commerce, and with contributions from other CNMI Government departments and agencies, as well as inputs from private organizations.

Other reports published by the Department of Commerce may be accessed at:

www.commerce.gov.mp

We are committed to providing you, the public, business community, and leaders of the CNMI this quarterly issue for whatever purpose it may serve you. Moreover, we are grateful to all those who contributed to the successful compilation of this report and look forward to working closely together to ensure that future issues are published on time. We invite and welcome any suggestions or comments that may improve our quarterly publications. Please send your thoughts to our office.

Hafa Adai,

JAMES A. SANTOS
Secretary of Commerce

Table of Contents

| | |
|--|-----------|
| TABLE 1 - BANKING ACTIVITY | 4 |
| FIGURE 1.1 - BANKING ACTIVITY - DEPOSITS | 4 |
| FIGURE 1.2 - BANKING ACTIVITY - LOANS | 4 |
| TABLE 2 - REMITTANCE | 5 |
| FIGURE 2 - REMITTANCE | 5 |
| TABLE 3 - AUTO SALES | 5 |
| FIGURE 3 - AUTO SALES | 5 |
| TABLE 4 - VISITOR ARRIVAL | 6 |
| FIGURE 4 - VISITOR ARRIVAL | 6 |
| TABLE 5 - AVERAGE CNMI HOTEL DAILY RATE | 7 |
| FIGURE 5 - AVERAGE CNMI HOTEL DAILY RATE | 7 |
| TABLE 6 - AVERAGE CNMI HOTEL OCCUPANCY RATE | 7 |
| FIGURE 6 - AVERAGE CNMI HOTEL OCCUPANCY RATE | 7 |
| TABLE 7 - BUSINESS GROSS REVENUE (BRG) REPORTED | 8 |
| FIGURE 7 - BUSINESS GROSS REVENUE (BRG) REPORTED | 8 |
| TABLE 8 - GOVERNMENT EXPENDITURES | 8 |
| FIGURE 8 - GOVERNMENT EXPENDITURES | 8 |
| TABLE 9 - GENERAL FUND REVENUE (TAXES AND FEES COLLECTED) | 9 |
| FIGURE 9 - GENERAL FUND REVENUE (TAXES AND FEES COLLECTED) | 9 |
| TABLE 10 - IMPORTS | 10 |
| FIGURE 10 - IMPORTS (IN THOUSANDS) | 10 |
| TABLE 11 - EXPORTS | 11 |
| FIGURE 11 - EXPORTS | 11 |
| TABLE 12 - TELEPHONE LINES | 11 |
| TABLE 12 - TELEPHONE LINES | 11 |
| FIGURE 12.1 - COMMERCIAL PHONE LINES | 12 |
| FIGURE 12.2 - RESIDENTIAL PHONE LINES | 12 |
| FIGURE 12.3 - COMMERCIAL & RESIDENTIAL PHONE LINES (TOTALS) | 12 |
| TABLE 13 - BUILDING PERMITS | 13 |
| FIGURE 13.1 - NUMBER OF BUILDING PERMITS ISSUED | 13 |
| FIGURE 13.2 - VALUES OF BUILDING PERMITS ISSUED (IN MILLIONS) | 13 |
| TABLE 14 - CNMI CONSUMER PRICE INDEX (CPI) | 14 |
| TABLE 15 - CNMI CONSUMER PRICE FOR 9 SELECTED GROUPS | 14 |
| TABLE 16 - HISTORICAL CPIs FOR SELECTED GROUPS | 15 |
| LIST OF CONTRIBUTORS | 16 |

TABLE 1 - BANKING ACTIVITY

| Banking Activity (US \$ Millions) | Year | | | | Quarter | | | | |
|-----------------------------------|-----------------|-----------------|-----------------|-----------------|---------------|---------------|---------------|---------------|---------------|
| | 2004 | 2005 | 2006 | 2007 | 2007.1 | 2007.2 | 2007.3 | 2007.4 | 2008.1 |
| Total Deposits | 2,233.50 | 2,194.40 | 2,062.50 | 2,083.93 | 526.57 | 511.90 | 514.26 | 531.20 | 515.53 |
| Total Demand (Checking) | 663.80 | 735.00 | 592.50 | 599.06 | 156.02 | 142.80 | 143.39 | 156.85 | 152.14 |
| Total Savings | 908.50 | 788.30 | 675.00 | 586.91 | 152.29 | 149.52 | 141.85 | 143.25 | 133.63 |
| Total TCDs* | 661.20 | 671.10 | 795.00 | 897.96 | 218.26 | 219.59 | 229.02 | 231.10 | 229.76 |
| Total Loans | 818.40 | 798.90 | 734.80 | 674.28 | 174.14 | 170.96 | 167.58 | 161.61 | 156.72 |
| Consumer | 304.80 | 338.90 | 310.70 | 277.00 | 71.71 | 71.05 | 68.95 | 65.30 | 62.34 |
| Real Estate | 187.50 | 183.80 | 187.40 | 174.27 | 45.32 | 43.87 | 42.74 | 42.33 | 41.75 |
| Commercial | 326.10 | 276.20 | 236.70 | 223.01 | 57.10 | 56.04 | 55.89 | 53.97 | 52.64 |
| Loan to Deposit Ratio | 36.6% | 36.4% | 35.6% | 32.4% | 33.1% | 33.4% | 32.6% | 30.4% | 30.4% |

Source: Banking Section, Department of Commerce

*Includes Cashiers Checks

FIGURE 1.1 - BANKING ACTIVITY - DEPOSITS

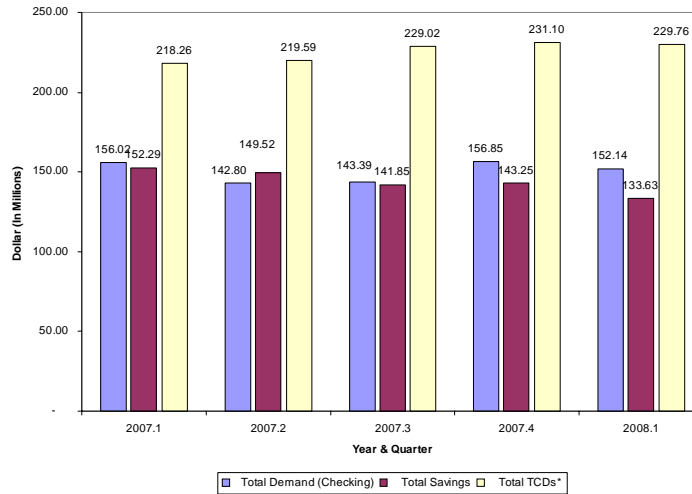


FIGURE 1.2 - BANKING ACTIVITY - LOANS

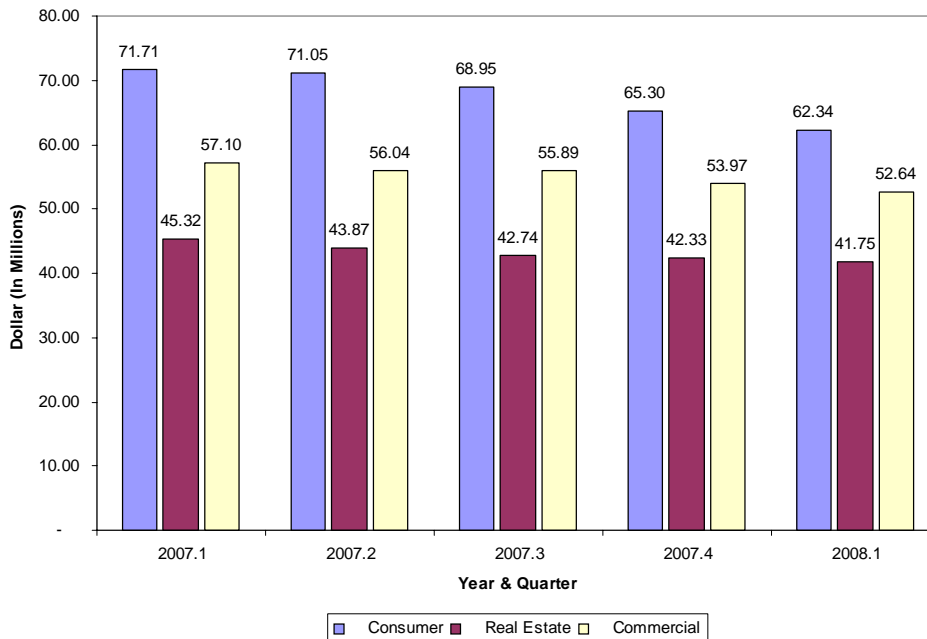


TABLE 2 - REMITTANCE

| Remittances | Year | | | | Quarter | | | | |
|-----------------------------------|-------|-------|-------|-------|---------|--------|--------|--------|--------|
| | 2004 | 2005 | 2006 | 2007 | 2007.1* | 2007.2 | 2007.3 | 2007.4 | 2008.1 |
| Remittances (US \$ Millions) | 94.6 | 112.6 | 102.2 | 93.6 | 25.4 | 22.0 | 21.9 | 24.3 | 20.8 |
| % Change to Previous Year/Quarter | 17.5% | 19.0% | -9.2% | -8.4% | 1.4% | -9.9% | -12.8% | -12.0% | -18.1% |
| % Change to Previous Quarter | | | | | -7.8% | -13.6% | -0.4% | 10.9% | -14.2% |

Source: Banking Section, Department of Commerce

*Note: Revisions to 2007.1 Data

FIGURE 2 - REMITTANCE

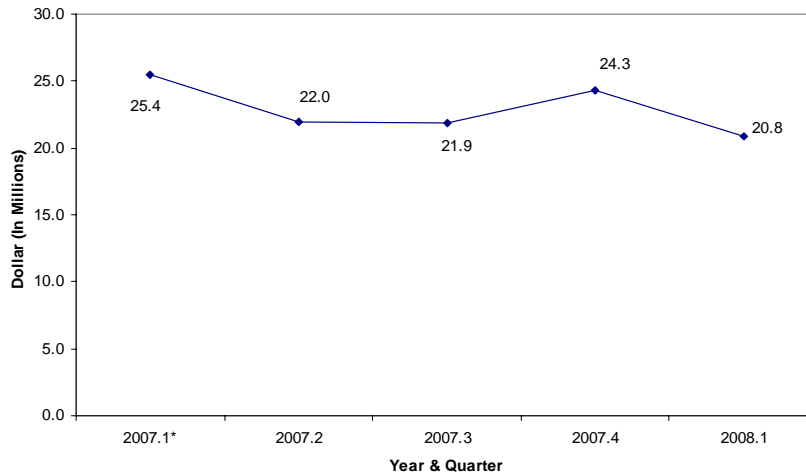


TABLE 3 - AUTO SALES

| Auto Sales | Year | | | | Quarter | | | | |
|-----------------------------------|-------|-------|--------|--------|---------|--------|--------|--------|--------|
| | 2004 | 2005 | 2006 | 2007 | 2007.1 | 2007.2 | 2007.3 | 2007.4 | 2008.1 |
| Total Cars Sold | 1,992 | 1,885 | 1,352 | 1,101 | 275 | 261 | 288 | 277 | 300 |
| % Change to Previous Year/Quarter | 17.7% | -5.4% | -28.2% | -18.6% | -33.1% | -25.9% | -14.3% | 9.5% | 9.1% |
| % Change to Previous Quarter | | | | | 8.7% | -5.1% | 10.3% | -3.8% | 8.3% |
| New Cars | 1,612 | 1,555 | 1,000 | 632 | 181 | 157 | 157 | 137 | 190 |
| Used Cars | 380 | 330 | 352 | 469 | 94 | 104 | 131 | 140 | 110 |

Source: Commonwealth Auto Dealer's Association (CADA)

FIGURE 3 - AUTO SALES

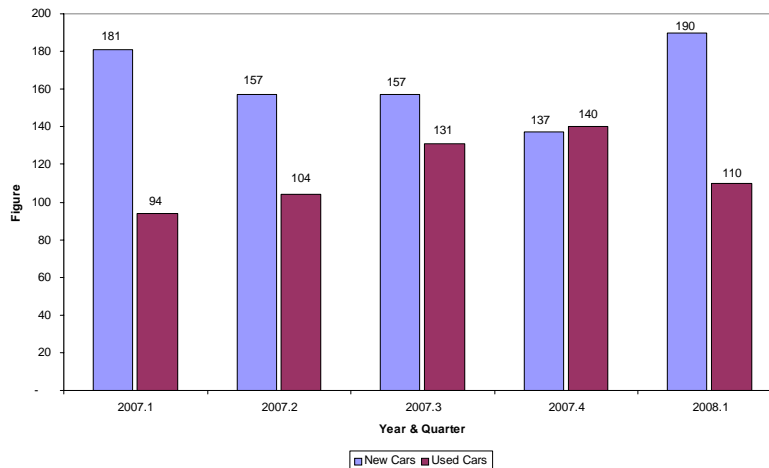


TABLE 4 - VISITOR ARRIVAL

| Visitor Arrivals | Year | | | | Quarter | | | | |
|-----------------------------------|----------------|----------------|----------------|----------------|----------------|---------------|---------------|---------------|----------------|
| | 2004 | 2005 | 2006 | 2007 | 2007.1 | 2007.2 | 2007.3 | 2007.4 | 2008.1 |
| Total Visitors | 589,224 | 491,701 | 435,494 | 389,261 | 109,643 | 85,368 | 99,629 | 94,621 | 110,690 |
| % Change to Previous Year/Quarter | 28.24% | -16.55% | -11.43% | -10.62% | -2.5% | -21.5% | -12.3% | -6.1% | 1.0% |
| % Change to Previous Quarter | | | | | 8.9% | -22.1% | 16.7% | -5.0% | 17.0% |
| Japan | 382,478 | 351,739 | 269,780 | 200,109 | 62,662 | 45,501 | 49,014 | 42,932 | 57,099 |
| Korea | 68,282 | 69,952 | 82,891 | 108,321 | 23,945 | 22,900 | 30,157 | 31,319 | 29,512 |
| U.S. & Guam | 36,739 | 37,666 | 24,579 | 27,849 | 6,468 | 7,210 | 6,565 | 7,606 | 8,800 |
| China/Hongkong | | 23,410 | 38,313 | 40,331 | 12,750 | 6,141 | 11,288 | 10,152 | 11,667 |
| Philippines | | 2,381 | 4,320 | 5,025 | 1,592 | 1,840 | 1,033 | 560 | 370 |
| Russia | | | 1,675 | 3,671 | 974 | 743 | 860 | 1,094 | 1,748 |
| Taiwan | | 2,085 | 314 | 445 | 124 | 227 | 41 | 53 | 87 |
| Others Areas* | 101,725 | 4,468 | 6,178 | 3,510 | 1,128 | 806 | 671 | 905 | 1,407 |

Source: Marianas Visitors Authority (MVA)

*Note: 2003 - 2005 includes China/Hong Kong, Philippines, Russia, & Taiwan

FIGURE 4 - VISITOR ARRIVAL

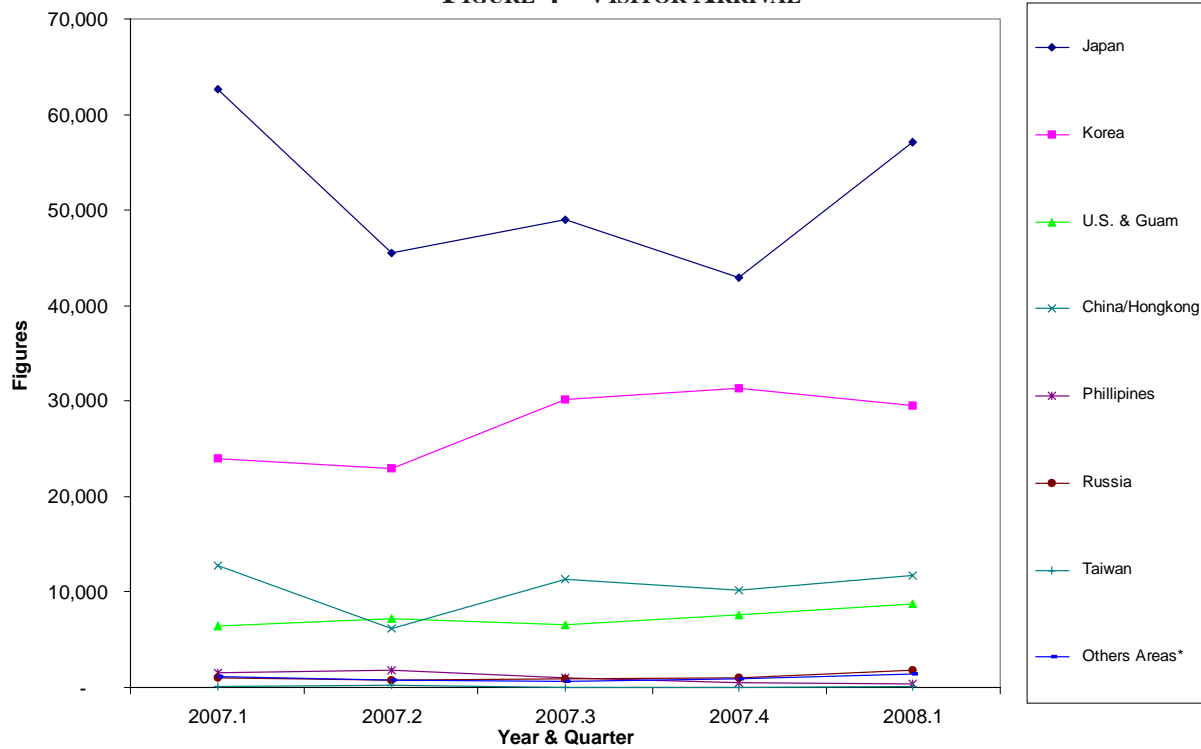


TABLE 5 - AVERAGE CNMI HOTEL DAILY RATE

| Hotel Daily Rates | Year | | | | Quarter | | | | |
|-----------------------------------|-------|-------|-------|-------|---------|--------|--------|--------|--------|
| | 2004 | 2005 | 2006 | 2007 | 2007.1 | 2007.2 | 2007.3 | 2007.4 | 2008.1 |
| Average Daily Rates (\$) | 80.00 | 83.00 | 90.00 | 92.12 | 95.83 | 85.70 | 97.32 | 89.65 | 101.10 |
| % Change to Previous Year/Quarter | 2.6% | 3.8% | 8.4% | 2.4% | 5.3% | 2.0% | 0.3% | 1.9% | 5.5% |
| % Change to Previous Quarter | | | | | 8.9% | -10.6% | 13.6% | -7.9% | 12.8% |

Source: Hotel Association of the Northern Mariana Islands (HANMI). Data from HANMI members only.
 Note: All Percents are Rounded to the Nearest Tenth

FIGURE 5 - AVERAGE CNMI HOTEL DAILY RATE

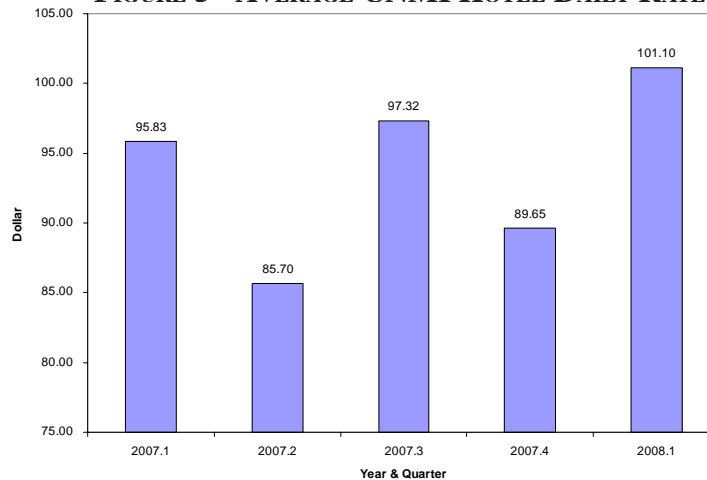


TABLE 6 - AVERAGE CNMI HOTEL OCCUPANCY RATE

| Hotel Occupancy Rate | Year | | | | Quarter | | | | |
|-----------------------------------|-------|-------|-------|-------|---------|--------|--------|--------|--------|
| | 2004 | 2005 | 2006 | 2007 | 2007.1 | 2007.2 | 2007.3 | 2007.4 | 2008.1 |
| Hotel Occupancy Rate (%) | 72.0% | 70.0% | 62.0% | 58.9% | 69.8% | 52.4% | 57.3% | 56.1% | 70.6% |
| % Change to Previous Year/Quarter | 10.8% | -3% | -11% | -5% | 16.3% | -15.5% | -11.9% | -8.0% | 1.2% |
| % Change to Previous Quarter | | | | | 14.4% | -24.9% | 9.3% | -2.0% | 25.9% |

Source: Hotel Association of the Northern Mariana Islands (HANMI). Data from HANMI members only.
 Note: All Percents are Rounded to the Nearest Tenth

FIGURE 6 - AVERAGE CNMI HOTEL OCCUPANCY RATE

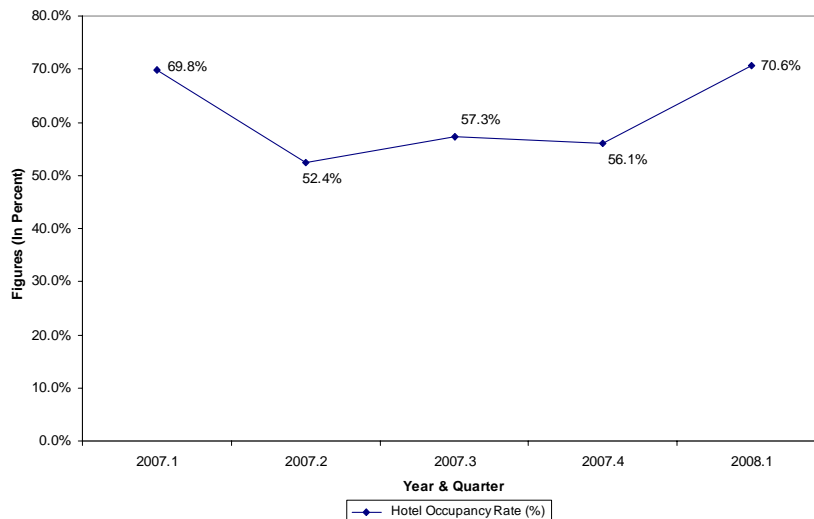


TABLE 7 - BUSINESS GROSS REVENUE (BRG) REPORTED

| Business Gross Revenue (BGR) | Year | | | | Quarter | | | | |
|---------------------------------------|--------------|--------------|--------------|--------------|--------------|--------------|--------------|--------------|--------------|
| | 2004 | 2005 | 2006 | 2007 | 2007.1 | 2007.2 | 2007.3 | 2007.4 | 2008.1 |
| BGR Reported* (US \$ Millions) | 2,034 | 2,020 | 1,829 | 1,672 | 454.4 | 424.6 | 393.0 | 399.6 | 416.6 |
| % Change to Previous Year/Quarter | 6.3% | -0.7% | -9.5% | -8.6% | -9.7% | -5.3% | -14.2% | -4.8% | -8.3% |
| % Change to Previous Quarter | | | | | 8.3% | -6.6% | -7.4% | 1.7% | 4.3% |

Source: Department of Finance

* Estimated based on BGRT and other income tax collections.

FIGURE 7 - BUSINESS GROSS REVENUE (BRG) REPORTED

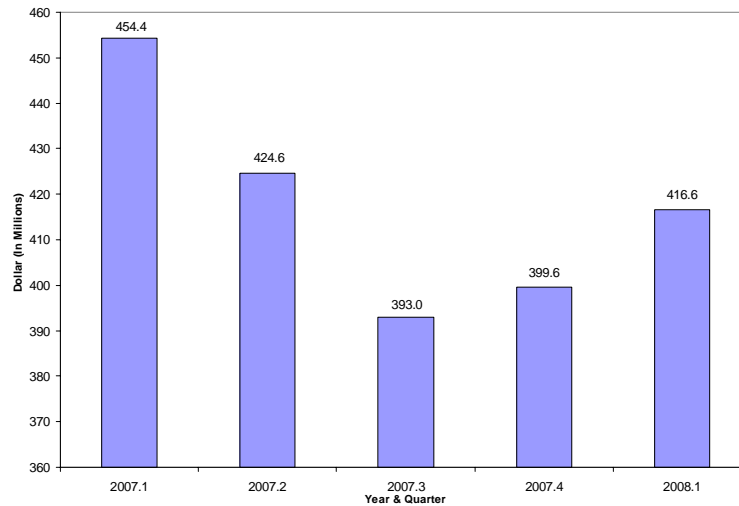


TABLE 8 - GOVERNMENT EXPENDITURES

| General Expenditures | Year | | | | Quarter | | | | |
|--|--------------|--------------|--------------|--------------|-------------|-------------|-------------|-------------|-------------|
| | 2004 | 2005 | 2006 | 2007 | 2007.1 | 2007.2 | 2007.3 | 2007.4 | 2008.1 |
| Government Expenditures (US \$ Millions)* | 215.4 | 224.1 | 195.6 | 162.7 | 42.3 | 38.0 | 40.2 | 42.2 | 43.9 |
| % Change to Previous Year/Quarter | 0.70% | 4.04% | -12.7% | -12.7% | -21.5% | -20.4% | -21.8% | -0.8% | 3.8% |
| % Change to Previous Quarter | | | | | -0.5% | -10.0% | 5.7% | 4.9% | 4.1% |

Source: Department of Finance

*Note: FY07 expenditures do not include suspended employer retirement contributions

FIGURE 8 - GOVERNMENT EXPENDITURES

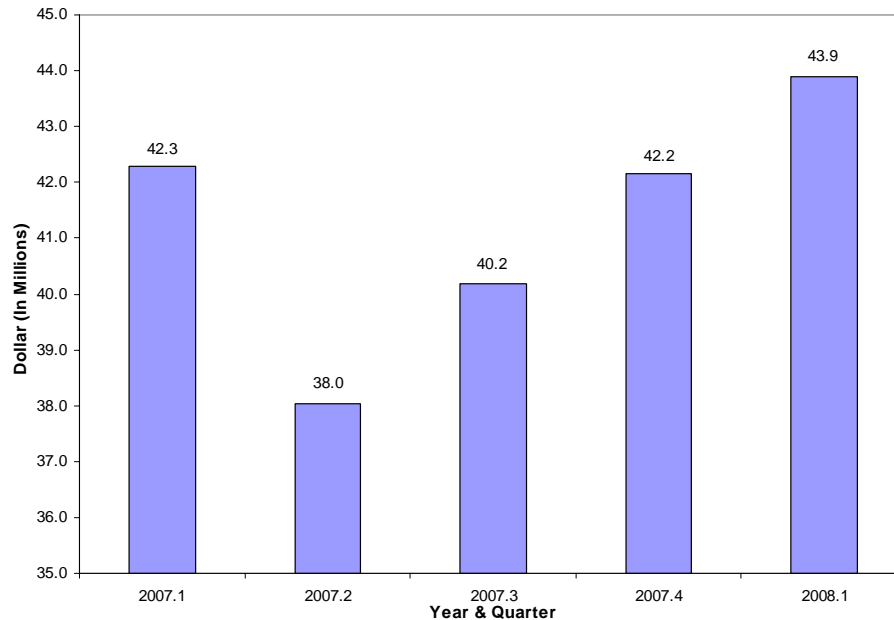


TABLE 9 - GENERAL FUND REVENUE (TAXES AND FEES COLLECTED)

| General Fund Revenue (Taxes and Fees Collected) | Year | | | | Quarter | | | | |
|---|---------------|---------------|---------------|---------------|---------------|---------------|---------------|---------------|---------------|
| | 2004 | 2005 | 2006 | 2007 | 2007.1 | 2007.2 | 2007.3 | 2007.4 | 2008.1 |
| Total (US \$ Millions) | 217.90 | 210.29 | 192.03 | 163.03 | 43.860 | 39.540 | 44.250 | 35.382 | 40.016 |
| % Change to Previous Year/Quarter | 3.87% | -3.49% | -8.68% | -15% | -9.9% | -15.7% | -21.1% | -12.3% | -8.8% |
| % Change to Previous Quarter | | | | | 8.7% | -9.8% | 11.9% | -20.0% | 13.1% |
| Business Gross Receipt | 54.48 | 58.29 | 54.05 | 49.04 | 13.750 | 12.790 | 10.520 | 11.980 | 12.309 |
| Wage & Salary | 34.97 | 32.68 | 28.58 | 26.20 | 6.550 | 6.380 | 6.900 | 6.366 | 6.288 |
| NMTIT Personal (Chp. 7) / Corp. Income | 11.23 | 10.01 | 15.05 | 8.34 | 2.420 | 2.060 | 2.230 | 1.632 | 2.234 |
| Excise | 24.43 | 23.88 | 24.41 | 20.58 | 5.470 | 5.340 | 5.090 | 4.676 | 5.253 |
| Hotel Occupancy | 5.96 | 6.50 | 5.54 | 4.93 | 1.580 | 1.120 | 1.290 | 0.943 | 1.676 |
| Fuel/Container/Bar | 9.91 | 10.24 | 7.25 | 6.82 | 1.310 | 2.080 | 2.060 | 1.366 | 1.422 |
| Garment Certification | 30.56 | 24.08 | 18.06 | 11.38 | 3.770 | 2.840 | 2.650 | 2.120 | 1.759 |
| *Fees, Charges, & Other Revenues | 46.36 | 44.61 | 33.81 | 39.26 | 9.930 | 7.870 | 14.370 | 7.089 | 8.830 |
| Transfers from Other Funds | | | | | | | | | 1.242 |
| Revenue Transfer to Other Funds | | | | -3.51 | -0.920 | -0.940 | -0.860 | -0.790 | -0.997 |

Source: Department of Finance

Note: FY07 Expenditures do not include suspended employer retirement contributions

*Note: Also Includes "Transfers From Other Funds" for Years 2004 - 2007 & Quarters 2007.1 - 2007.4

FIGURE 9 - GENERAL FUND REVENUE (TAXES AND FEES COLLECTED)

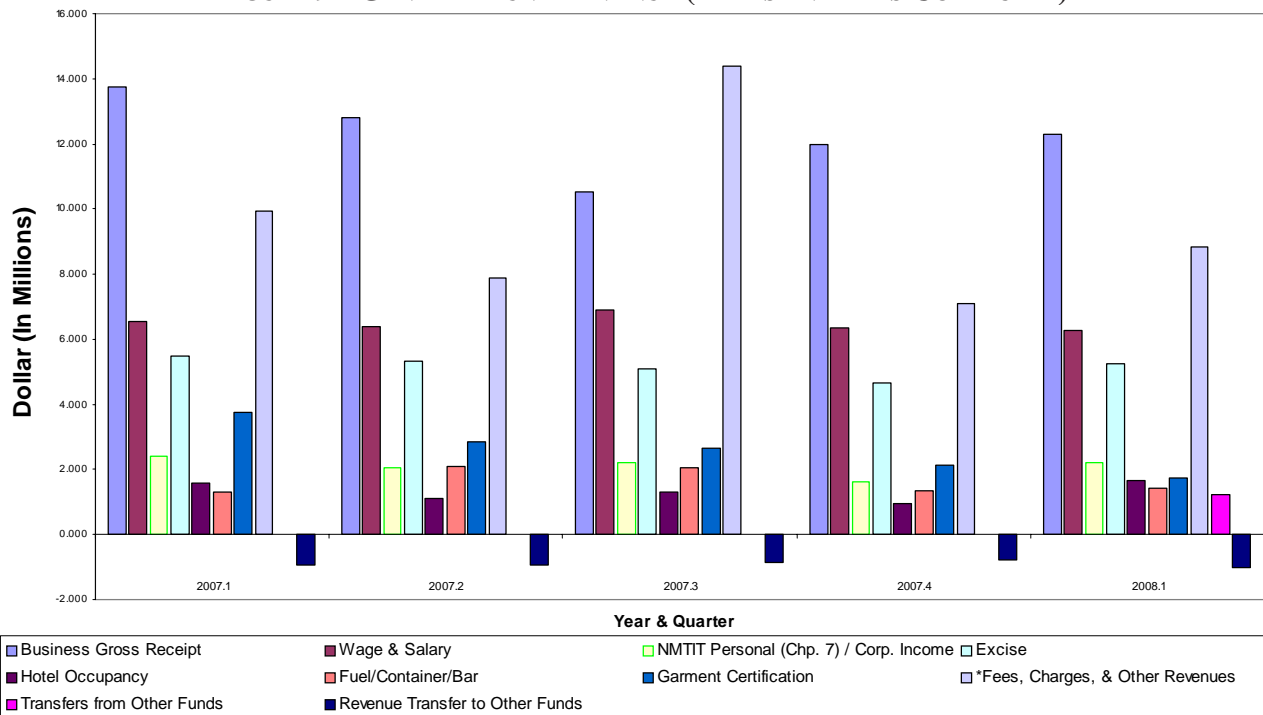


TABLE 10 - IMPORTS

| Imports | Year | | | | Quarter | | | | |
|-------------------------------------|---------------|---------------|---------------|---------------|---------------|---------------|---------------|---------------|--------------|
| | 2004 | 2005 | 2006 | 2007 | 2007.1** | 2007.2** | 2007.3 | 2007.4 | 2008.1 |
| Total Tonnage (In Thousands) | 666.40 | 605.50 | 540.20 | 439.44 | 114.44 | 108.99 | 113.66 | 102.34 | 93.46 |
| Petroleum, Oil, Lubricants (P.O.L.) | 202.40 | 214.20 | 203.40 | 175.99 | 44.68 | 40.43 | 50.63 | 40.24 | 38.45 |
| Cement | 22.80 | 19.20 | 16.80 | 27.15 | 5.81 | 5.50 | 9.67 | 6.18 | 5.37 |
| Garment | 157.70 | 112.90 | 91.50 | 51.64 | 14.51 | 14.62 | 12.67 | 9.83 | 5.69 |
| Food Items | | | 62.30 | 53.53 | 13.89 | 13.33 | 12.45 | 13.85 | 12.68 |
| Construction Materials | | | 16.60 | 14.90 | 4.51 | 3.63 | 3.82 | 2.93 | 2.80 |
| Beverages | | | 23.50 | 20.66 | 5.18 | 5.14 | 5.15 | 5.19 | 5.11 |
| Others* | 283.50 | 259.20 | 125.90 | 95.57 | 25.86 | 26.34 | 19.26 | 24.11 | 23.36 |

Source: Port of Saipan, Commonwealth Ports Authority (CPA)

*Note: Others include Food, Construction Materials & Beverages for CY 2004 - 2005

**1st & 2nd Qrt Figures Adjusted to reflect latest adjusted figures

FIGURE 10 - IMPORTS (IN THOUSANDS)

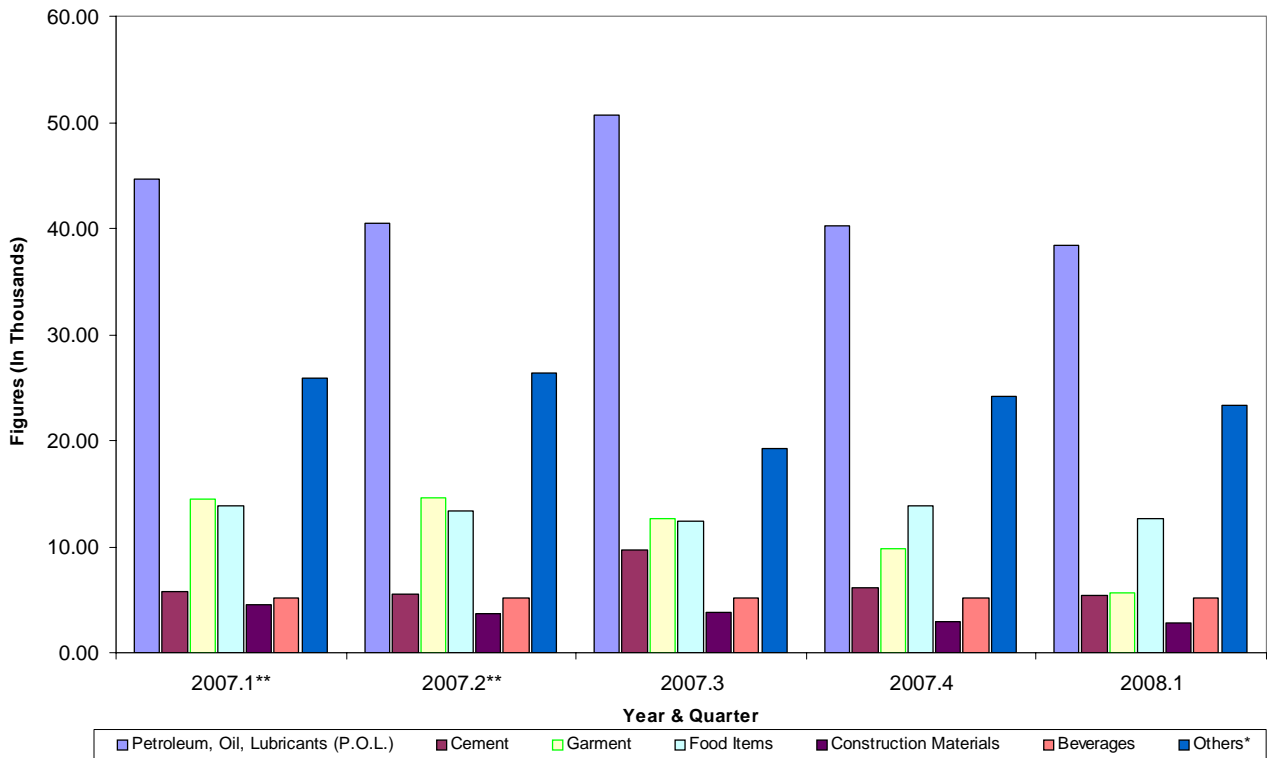


TABLE 11 - EXPORTS

| Exports | Year | | | | Quarter | | | | |
|--|---------------|---------------|---------------|---------------|---------------|--------------|--------------|--------------|--------------|
| | 2004 | 2005 | 2006 | 2007 | 2007.1 | 2007.2 | 2007.3 | 2007.4 | 2008.1 |
| Garment Exports Value (US \$ Millions)* | 826.00 | 650.80 | 486.50 | 307.57 | 101.89 | 76.76 | 71.62 | 57.30 | 47.54 |
| % Change to Previous Year/Quarter | 4.28% | -21.21% | -25.25% | -36.78% | -19.01% | -38.79% | -43.16% | -47.58% | -53.34% |
| % Change to Previous Quarter | | | | | -6.78% | -24.66% | -6.70% | -20.00% | -17.03% |

Source: Department of Finance

*Note: Estimated Based on Garment Certification Fee Collection

FIGURE 11 - EXPORTS

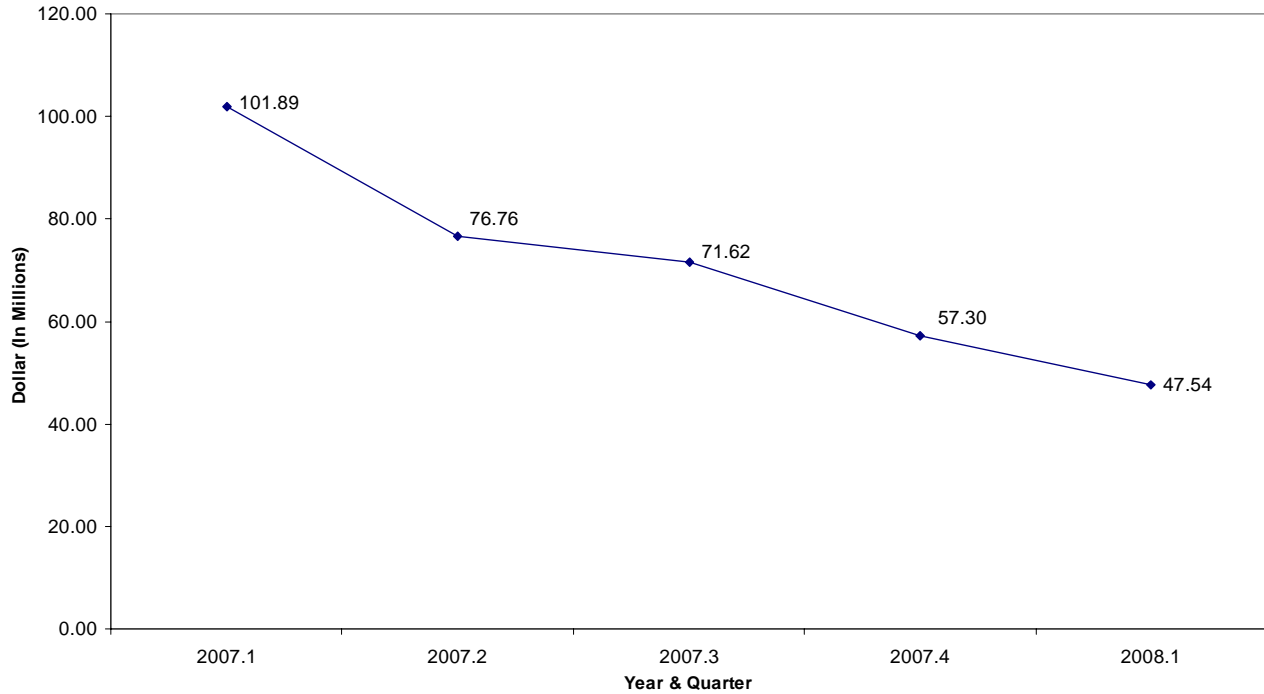


TABLE 12 - TELEPHONE LINES

| Telephone Lines | Year | | | | Quarter | | | | |
|--------------------------------------|---------------|---------------|---------------|---------------|---------------|---------------|---------------|---------------|---------------|
| | 2004 | 2005 | 2006 | 2007 | 2007.1 | 2007.2 | 2007.3 | 2007.4 | 2008.1 |
| Total Telephone Lines | 31,525 | 31,752 | 30,684 | 28,963 | 29,939 | 29,684 | 29,166 | 28,963 | 28,631 |
| % Change to Previous Year/Quarter | 6.0% | 0.7% | -3.3% | -5.6% | -2.2% | -4.0% | -5.7% | -5.6% | -4.4% |
| % Change to Previous Quarter | | | | | -2.4% | -0.9% | -1.7% | -0.7% | -1.1% |
| Total Commercial Phone Lines | 19,722 | 20,551 | 20,592 | 20,001 | 20,108 | 20,135 | 19,986 | 20,001 | 19,845 |
| % Change to Previous Year/Quarter | 8.9% | 4.2% | 0.19% | -2.9% | 2.4% | -0.4% | -3.0% | -2.9% | -1.3% |
| % Change to Previous Quarter | | | | | -2.4% | 0.1% | -0.7% | 0.1% | -0.8% |
| Saipan | 10,920 | 10,668 | 9,737 | 8,689 | 9,276 | 9,064 | 8,813 | 8,689 | 8,552 |
| Tinian | 450 | 435 | 387 | 376 | 378 | 373 | 371 | 376 | 381 |
| Rota | 489 | 466 | 428 | 410 | 427 | 420 | 408 | 410 | 395 |
| Special Access | 7,863 | 8,982 | 10,040 | 10,526 | 10,027 | 10,278 | 10,394 | 10,526 | 10,517 |
| Total Residential Phone Lines | 11,803 | 11,201 | 10,992 | 8,962 | 9,831 | 9,549 | 9,180 | 8,962 | 8,786 |
| % Change to Previous Year/Quarter | 1.4% | -5.1% | -9.90% | -11.2% | -10.4% | -10.9% | -11.2% | -11.2% | -10.6% |
| % Change to Previous Quarter | | | | | -2.6% | -2.9% | -3.9% | -2.4% | -2.0% |
| Saipan | 10,734 | 10,178 | 9,096 | 8,045 | 8,840 | 8,578 | 8,237 | 8,045 | 7,896 |
| Tinian | 531 | 499 | 492 | 458 | 495 | 485 | 473 | 458 | 443 |
| Rota | 538 | 524 | 504 | 459 | 496 | 486 | 470 | 459 | 447 |

Source: Pacific Telecommunication Incorporated (PTI)

FIGURE 12.1 - COMMERCIAL PHONE LINES

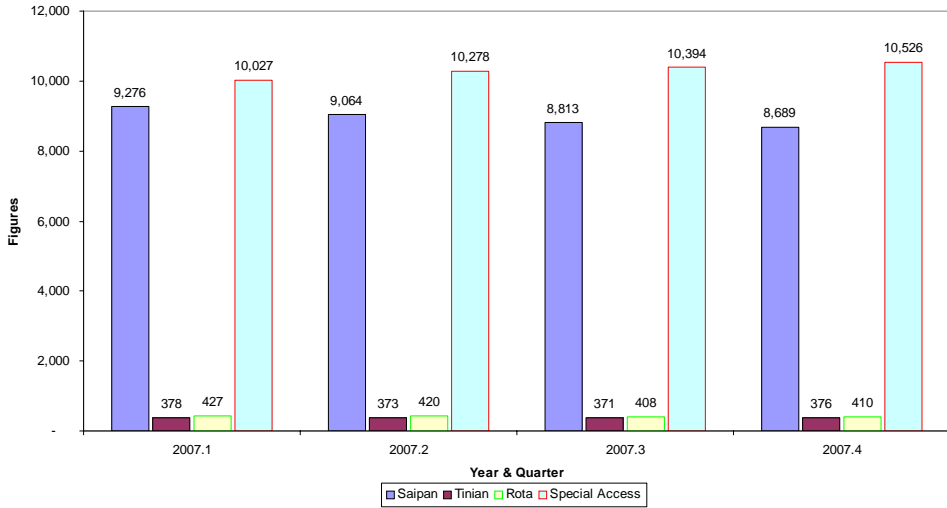


FIGURE 12.2 - RESIDENTIAL PHONE LINES

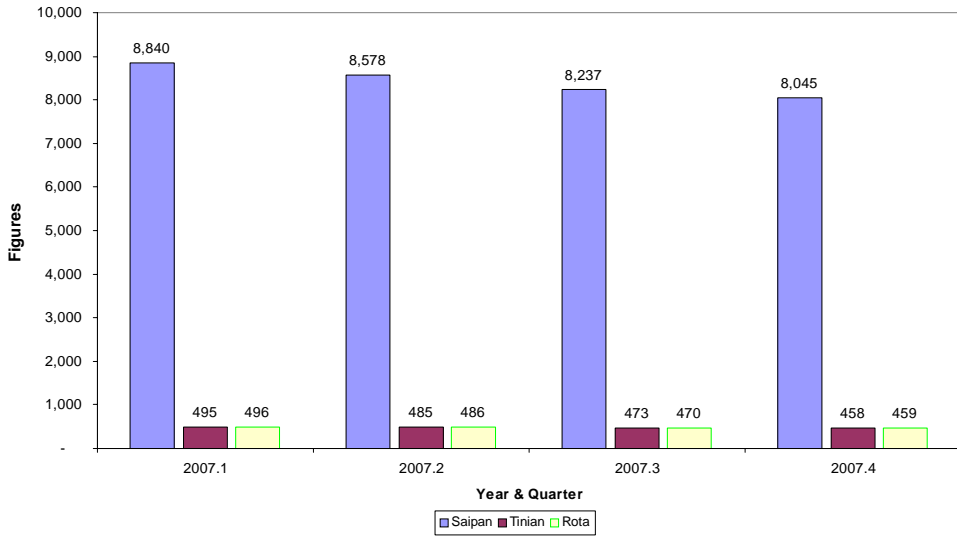


FIGURE 12.3 - COMMERCIAL & RESIDENTIAL PHONE LINES (TOTALS)

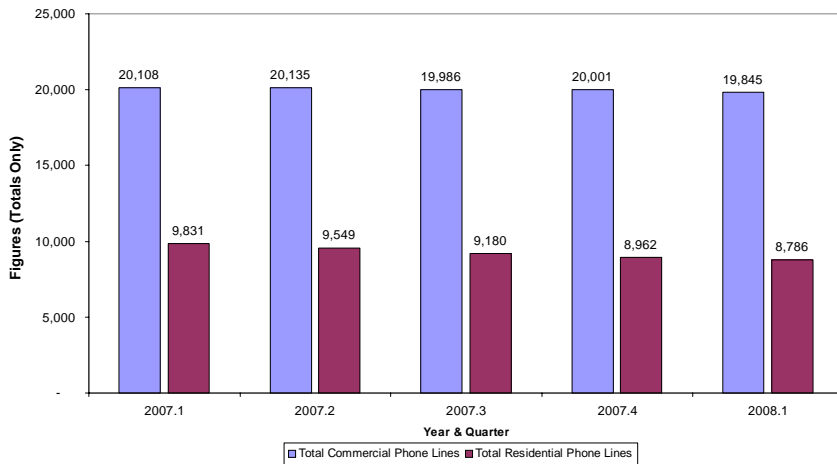


TABLE 13 - BUILDING PERMITS

| CNMI Building Permits Issued | Year | | | | | Quarter | | | | |
|-------------------------------------|--------------|--------------|--------------|--------------|--------------|------------|------------|------------|------------|------------|
| | 2003 | 2004 | 2005 | 2006 | 2007 | 2007.1 | 2007.2 | 2007.3 | 2007.4 | 2008.1 |
| Total No. of Permits | 323 | 352 | 350 | 292 | 255 | 64 | 71 | 56 | 64 | 57 |
| No. of Commercial | 163 | 157 | 164 | 125 | 121 | 21 | 35 | 30 | 35 | 31 |
| No. of Residential | 160 | 195 | 186 | 167 | 120 | 43 | 36 | 19 | 22 | 25 |
| No. of Government* | | | | | 14 | | | 7 | 7 | 1 |
| Total Value (US \$ Millions) | 15.55 | 23.05 | 28.89 | 11.79 | 16.23 | 4.3 | 3.0 | 4.5 | 4.4 | 4.9 |
| Commercial | 9.55 | 11.47 | 19.94 | 3.59 | 9.0 | 2.5 | 1.8 | 3.23 | 1.51 | 3.06 |
| Residential | 6.00 | 11.58 | 8.95 | 7.74 | 5.1 | 1.8 | 1.3 | 0.86 | 1.10 | 1.59 |
| Government* | | | | | 2.2 | | | 0.37 | 1.84 | 0.30 |

Source: Building Safety Code Division, Department of Public Works

*Recent Addition to EI 3rd Qtr 2007

FIGURE 13.1 - NUMBER OF BUILDING PERMITS ISSUED

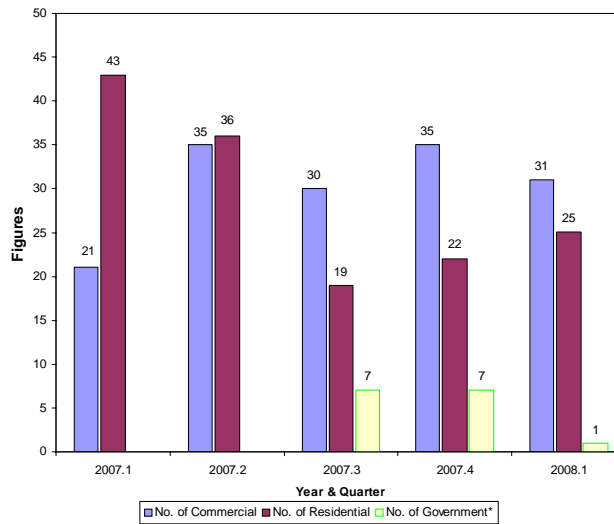


FIGURE 13.2 - VALUES OF BUILDING PERMITS ISSUED (IN MILLIONS)

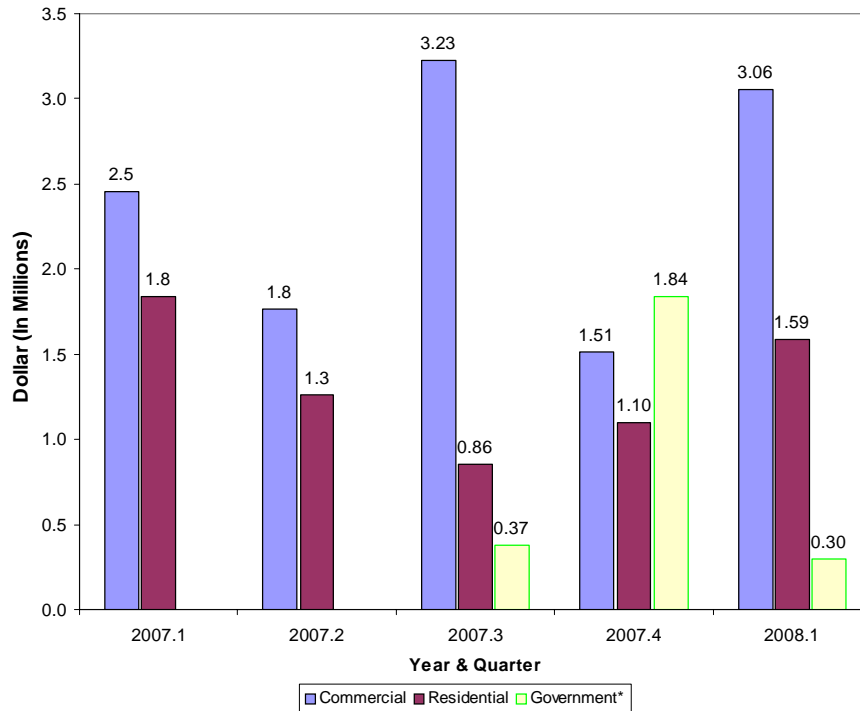


TABLE 14 - CNMI CONSUMER PRICE INDEX (CPI)

COMMONWEALTH OF THE NORTHERN MARIANA ISLANDS

1st Quarter 2003 = 100

| Groups | 1st Qtr 2008 | 4th Qtr 2007 | 1st Qtr 2007 | To 1st Qtr 08 fm 4th Qtr 07 | To 1st Qtr 08 fm 1st Qtr 07 |
|-----------------------------|-----------------|-----------------|-----------------|--------------------------------|--------------------------------|
| All Items | 114.1 | 114.1 | 112.4 | 0.0 | 1.7 |
| Food | 112.0 | 107.4 | 104.9 | 4.6 | 7.1 |
| Alcoholic Beverages | 106.4 | 104.3 | 103.9 | 2.1 | 2.5 |
| Housing and Utilities | 141.0 | 144.9 | 140.9 | -3.9 | 0.1 |
| Apparel | 102.4 | 102.3 | 101.8 | 0.1 | 0.6 |
| Transportation | 100.0 | 100.0 | 100.0 | 0.0 | 0.0 |
| Medical Care | 107.9 | 101.1 | 100.0 | 6.8 | 7.9 |
| Recreation | 102.4 | 101.0 | 100.3 | 1.4 | 2.1 |
| Education and Communication | 100.5 | 100.6 | 100.8 | -0.1 | -0.3 |
| Other Goods and Services | 100.0 | 100.0 | 100.0 | 0.0 | 0.0 |

Source: Central Statistic Division, Department of Commerce

TABLE 15 - CNMI CONSUMER PRICE FOR 9 SELECTED GROUPS

COMMONWEALTH OF THE NORTHERN MARIANA ISLANDS

1st Quarter 2003 = 100

| Year & Quarter | All Items | Food | Alcoholic Beverages | Housing Utilities | Apparel | Transportation | Medical Care | Recreation | Education and Communication | Other Goods & Services |
|-------------------|--------------|-------|------------------------|----------------------|---------|----------------|-----------------|------------|--------------------------------|---------------------------|
| 2003.1 | 100.0 | 100.0 | 100.0 | 100.0 | 100.0 | 100.0 | 100.0 | 100.0 | 100.0 | 100.0 |
| 2003.2 | 99.9 | 100.3 | 100.2 | 100.0 | 100.2 | 99.7 | 100.0 | 99.3 | 99.8 | 100.0 |
| 2003.3 | 99.8 | 100.7 | 100.0 | 99.2 | 101.0 | 99.7 | 100.0 | 99.1 | 100.2 | 100.0 |
| 2003.4 | 99.6 | 100.5 | 99.9 | 97.9 | 100.5 | 100.5 | 100.0 | 96.3 | 99.6 | 100.0 |
| 2004.1 | 100.2 | 103.1 | 99.9 | 98.3 | 100.9 | 100.5 | 100.0 | 95.6 | 99.5 | 100.0 |
| 2004.2 | 100.9 | 104.1 | 99.7 | 97.7 | 99.8 | 100.9 | 100.0 | 101.5 | 99.6 | 108.3 |
| 2004.3 | 100.5 | 105.2 | 100.1 | 97.4 | 95.5 | 100.0 | 100.0 | 98.9 | 98.7 | 108.3 |
| 2004.4 | 101.2 | 107.4 | 99.9 | 98.0 | 92.6 | 100.2 | 100.0 | 98.6 | 100.9 | 108.3 |
| 2005.1 | 101.3 | 106.9 | 100.0 | 98.2 | 98.0 | 100.6 | 100.0 | 98.8 | 98.0 | 108.3 |
| 2005.2 | 101.6 | 107.7 | 101.3 | 98.3 | 96.6 | 100.7 | 100.0 | 101.5 | 98.4 | 108.3 |
| 2005.3 | 100.2 | 100.4 | 100.4 | 100.1 | 96.3 | 100.3 | 100.1 | 99.6 | 101.4 | 100.0 |
| 2005.4 | 100.6 | 99.6 | 100.1 | 102.2 | 99.5 | 100.0 | 99.8 | 100.8 | 101.1 | 100.0 |
| 2006.1 | 101.3 | 101.0 | 100.4 | 101.5 | 114.0 | 100.3 | 106.5 | 103.0 | 100.8 | 100.0 |
| 2006.2 | 100.3 | 100.2 | 100.0 | 101.0 | 100.5 | 100.0 | 100.0 | 100.7 | 100.0 | 100.0 |
| 2006.3 | 111.3 | 101.3 | 100.0 | 139.7 | 100.5 | 100.0 | 100.0 | 102.2 | 100.1 | 100.0 |
| 2006.4 | 111.7 | 102.3 | 100.0 | 140.5 | 100.3 | 100.0 | 100.0 | 99.1 | 100.5 | 100.0 |
| 2007.1 | 112.4 | 104.9 | 103.9 | 140.9 | 101.8 | 100.0 | 100.0 | 100.3 | 100.8 | 100.0 |
| 2007.2 | 113.7 | 106.2 | 103.9 | 144.5 | 102.1 | 100.0 | 101.1 | 100.4 | 100.6 | 100.0 |
| 2007.3 | 113.8 | 106.5 | 103.9 | 144.6 | 102.3 | 100.0 | 101.1 | 100.8 | 100.6 | 100.0 |
| 2007.4 | 114.1 | 107.4 | 104.3 | 144.9 | 102.3 | 100.0 | 101.1 | 101.0 | 100.6 | 100.0 |
| 2008.1 | 114.1 | 112.0 | 106.4 | 141.0 | 102.4 | 100.0 | 107.9 | 102.4 | 100.5 | 100.0 |

Source: Central Statistic Division, Department of Commerce

TABLE 16 - HISTORICAL CPIs FOR SELECTED GROUPS

COMMONWEALTH OF THE NORTHERN MARIANA ISLANDS
1st Quarter 2003 = 100

| Year & Quarter | Food | Alcoholic Beverages | Housing Utilities | Apparel | Transportation | Medical Care | Recreation | Education Communication | Other Goods & Services | All Items |
|----------------|-------|---------------------|-------------------|---------|----------------|--------------|------------|-------------------------|------------------------|-----------|
| Wgts | 19.02 | 1.72 | 27.73 | 2.24 | 33.52 | 2.36 | 2.44 | 5.68 | 5.30 | 100.0 |
| 2000.1 | 111.3 | | 103.1 | 108.5 | 97.0 | 84.3 | | | | 99.3 |
| 2000.2 | 110.1 | | 103.5 | 107.4 | 99.1 | 92.5 | | | | 101.8 |
| 2000.3 | 112.2 | | 104.7 | 107.9 | 101.4 | 93.1 | | | | 103.2 |
| 2000.4 | 109.0 | | 100.7 | 108.0 | 101.4 | 92.6 | | | | 101.4 |
| 2001.1 | 106.0 | | 101.3 | 108.0 | 101.2 | 92.2 | | | | 100.3 |
| 2001.2 | 107.3 | | 101.2 | 107.5 | 100.6 | 92.2 | | | | 100.6 |
| 2001.3 | 106.7 | | 104.2 | 107.5 | 100.2 | 92.1 | | | | 100.8 |
| 2001.4 | 107.7 | | 102.3 | 108.4 | 98.8 | 91.9 | | | | 100.7 |
| 2002.1 | 106.0 | | 102.8 | 107.2 | 99.5 | 97.9 | | | | 102.2 |
| 2002.2 | 103.7 | | 98.4 | 107.9 | 101.0 | 97.6 | | | | 100.8 |
| 2002.3 | 102.3 | | 101.3 | 107.7 | 101.0 | 97.7 | | | | 100.8 |
| 2002.4 | 99.6 | | 100.3 | 101.5 | 101.2 | 97.7 | | | | 99.4 |
| 2003.1 | 100.0 | 100.0 | 100.0 | 100.0 | 100.0 | 100.0 | 100.0 | 100.0 | 100.0 | 100.0 |
| 2003.2 | 100.3 | 100.2 | 100.0 | 100.2 | 99.7 | 100.0 | 99.3 | 99.8 | 100.0 | 99.9 |
| 2003.3 | 100.7 | 100.0 | 99.2 | 101.0 | 99.7 | 100.0 | 99.1 | 100.2 | 100.0 | 99.8 |
| 2003.4 | 100.5 | 99.9 | 97.9 | 100.5 | 100.5 | 100.0 | 96.3 | 99.6 | 100.0 | 99.6 |
| 2004.1 | 103.1 | 99.9 | 98.3 | 100.9 | 100.5 | 100.0 | 95.6 | 99.5 | 100.0 | 100.2 |
| 2004.2 | 104.1 | 99.7 | 97.7 | 99.8 | 100.9 | 100.0 | 101.5 | 99.6 | 108.3 | 100.9 |
| 2004.3 | 105.2 | 100.1 | 97.4 | 95.5 | 100.0 | 100.0 | 98.9 | 98.7 | 108.3 | 100.5 |
| 2004.4 | 107.4 | 99.9 | 98.0 | 92.6 | 100.2 | 100.0 | 98.6 | 100.9 | 108.3 | 101.2 |
| 2005.1 | 106.9 | 100.0 | 98.2 | 98.0 | 100.6 | 100.0 | 98.8 | 98.0 | 108.3 | 101.3 |
| 2005.2 | 107.7 | 101.3 | 98.3 | 96.6 | 100.7 | 100.0 | 101.5 | 98.4 | 108.3 | 101.6 |
| 2005.3 | 100.4 | 100.4 | 100.1 | 96.3 | 100.3 | 100.1 | 99.6 | 101.4 | 100.0 | 100.2 |
| 2005.4 | 99.6 | 100.1 | 102.2 | 99.5 | 100.0 | 99.8 | 100.8 | 101.1 | 100.0 | 100.6 |
| 2006.1 | 101.0 | 100.4 | 101.5 | 114.0 | 100.3 | 106.5 | 103.0 | 100.8 | 100.0 | 101.3 |
| 2006.2 | 100.2 | 100.0 | 101.0 | 100.5 | 100.0 | 100.0 | 100.7 | 100.0 | 100.0 | 100.3 |
| 2006.3 | 101.3 | 100.0 | 139.7 | 100.5 | 100.0 | 100.0 | 102.2 | 100.1 | 100.0 | 111.3 |
| 2006.4 | 102.3 | 100.0 | 140.5 | 100.3 | 100.0 | 100.0 | 99.1 | 100.5 | 100.0 | 111.7 |
| 2007.1 | 104.9 | 103.9 | 140.9 | 101.8 | 100.0 | 100.0 | 100.3 | 100.8 | 100.0 | 112.4 |
| 2007.2 | 106.2 | 103.9 | 144.5 | 102.1 | 100.0 | 101.1 | 100.4 | 100.6 | 100.0 | 113.7 |
| Year & Quarter | Food | Alcoholic Beverages | Housing Utilities | Apparel | Transportation | Medical Care | Recreation | Education Communication | Other Goods & Services | All Items |
| Wgts | 19.02 | 1.72 | 27.73 | 2.24 | 33.52 | 2.36 | 2.44 | 5.68 | 5.30 | 100.0 |
| 2007.3 | 106.5 | 103.9 | 144.6 | 102.3 | 100.0 | 101.1 | 100.8 | 100.6 | 100.0 | 113.8 |
| 2007.4 | 107.4 | 104.3 | 144.9 | 102.3 | 100.0 | 101.1 | 101.0 | 100.6 | 100.0 | 114.1 |
| 2008.1 | 112.0 | 106.4 | 141.0 | 102.4 | 100.0 | 107.9 | 102.4 | 100.5 | 100.0 | 114.1 |

Source: Central Statistic Division, Department of Commerce

1 The previous Consumer Price Index had only 5 major groups rather than the 9 that are in the revised CPI. Nevertheless, these historical CPIs will provide users with some indication of historical price movement of the CPI.

LIST OF CONTRIBUTORS

| Agency | | Contact Number |
|---|--------------|-----------------------|
| Commonwealth Auto-Dealer Association | CADA | 234-5911 |
| Commonwealth Ports Authority | CPA | 664-3555/3553 |
| Department of Commerce | DOC | 664-3044/3023 |
| Department of Finance | DOF | 664-1186 |
| Department of Public Works | DPW | 235-5827/9570 |
| Hotel Association of Northern Mariana Islands | HANMI | 233-3773/6964 |
| Marianas Visitor Authority | MVA | 664-3230 |
| Pacific Telecommunication Incorporated | PTI | 682-2612 |