

Table 7: Quarterly Inflation, by Group, Rota: Q1 2018 - Q4 2021
2nd Quarter 2017 = 100

Group	Year and Quarter [YYYY.QQ]															
	2018.01	2018.02	2018.03	2018.04	2019.01	2019.02	2019.03	2019.04	2020.01	2020.02	2020.03	2020.04	2021.01	2021.02	2021.03	2021.04
All Items	1.0	-1.0	0.0	-0.1	0.5	-0.3	0.3	-0.1	-0.1	0.1	0.2	-0.1	-0.2	0.4	0.3	1.5
Food	0.2	0.4	-0.2	0.2	2.3	-0.4	-0.3	-0.3	0.4	-0.1	-0.3	0.7	-2.0	-0.3	-0.2	1.0
Alcoholic Beverages	3.9	0.0	0.0	0.0	7.4	0.8	-8.2	0.0	-2.3	5.7	0.0	0.0	0.0	0.0	0.0	0.0
Housing & Utilities	-4.0	0.0	0.1	1.5	-2.2	0.9	-1.0	0.0	1.4	0.0	0.9	-1.2	2.7	3.7	3.2	3.4
Apparel	0.0	0.0	-15.0	0.0	0.0	0.0	0.0	0.0	0.0	0.0	-1.7	0.0	0.0	0.0	0.0	20.2
Transportation	-3.3	0.0	-1.2	0.0	8.5	1.6	-1.1	-0.6	-2.2	-0.1	1.1	-3.8	1.2	0.0	0.0	0.0
Medical Care	-1.9	0.0	0.0	0.0	0.0	0.0	0.0	0.0	0.0	0.4	0.0	0.7	0.0	0.0	-5.9	-5.7
Recreation	0.0	0.0	0.0	0.0	0.0	0.0	0.0	0.0	0.0	0.0	0.0	0.0	0.0	0.0	0.0	0.0
Education & Communicatic	2.9	-0.6	0.0	-1.4	-0.6	-0.9	1.2	0.0	-0.4	0.0	0.3	0.0	0.0	0.5	0.2	1.7
Other Goods & Services	0.0	-4.9	1.9	2.7	0.1	0.0	0.0	0.0	0.0	0.6	0.0	0.1	-0.1	0.0	0.0	0.0

Table 8: Annual Inflation, by Group, Rota: Q4 2011 - Q4 2021
2nd Quarter 2017 = 100

Group	Year and Quarter [YYYY.QQ]										
	2011.04	2012.04	2013.04	2014.04	2015.04	2016.04	2017.04	2018.04	2019.04	2020.04	2021.04
All Items	4.5	2.9	0.5	-0.8	-1.9	-0.4	3.6	-0.2	0.4	0.0	2.0
Food	2.2	2.1	7.7	-1.1	4.1	0.4	0.2	0.6	1.3	0.7	-1.5
Alcoholic Beverages	0.2	1.1	24.2	-14.6	15.5	-13.5	-3.7	3.9	-0.6	3.2	0.0
Housing & Utilities	3.1	4.9	0.6	-5.2	-5.3	0.0	9.8	-2.6	-2.2	1.0	13.7
Apparel	0.3	-6.1	0.4	1.3	3.7	2.6	0.5	-15.0	0.0	-1.7	20.2
Transportation	12.6	4.1	-3.2	-0.9	-8.5	-2.5	2.6	-4.5	8.4	-5.0	1.3
Medical Care	11.8	4.2	-7.4	10.7	0.4	-0.2	-0.3	-1.9	0.0	1.0	-11.2
Recreation	-0.4	0.4	-1.1	5.9	-0.6	24.1	5.2	0.0	0.0	0.0	0.0
Education & Communicatic	-0.8	-4.3	0.5	1.2	0.9	4.3	-2.2	0.8	-0.3	0.0	2.4
Other Goods & Services	3.4	1.2	2.7	7.0	2.7	-7.6	9.0	-0.4	0.1	0.7	-0.1

Table 9: Consumer Price Index, by Group, Rota: Q1 2010 - Q4 2021
2nd Quarter 2017 = 100

Group	Year and Quarter [YYYY.QQ]															
	2010.01	2010.02	2010.03	2010.04	2011.01	2011.02	2011.03	2011.04	2012.01	2012.02	2012.03	2012.04	2013.01	2013.02	2013.03	2013.04
All Items	90.7	90.6	91.6	92.5	94.5	95.3	96.7	96.7	97.1	97.3	98.3	99.5	99.6	100.2	99.7	100.0
Food	87.7	87.7	86.9	86.3	86.7	86.6	88.0	88.1	89.3	89.7	90.1	90.0	90.0	92.0	92.5	96.9
Alcoholic Beverages	91.8	91.8	93.2	93.2	93.4	93.4	93.4	93.4	94.3	94.3	94.3	94.4	94.3	94.3	103.4	117.2
Housing & Utilities	95.3	95.4	97.8	96.1	99.0	99.0	99.1	99.1	99.6	99.6	102.1	104.0	104.4	105.1	105.1	104.5
Apparel	99.7	100.2	97.4	97.7	97.7	97.2	98.1	97.9	97.1	96.9	95.0	92.0	90.9	91.9	92.3	92.4
Transportation	94.1	95.6	96.5	97.4	101.2	109.6	110.1	109.6	110.6	112.5	113.8	114.2	113.7	111.0	113.0	110.5
Medical Care	71.4	71.4	71.4	83.8	83.8	83.8	93.7	93.7	93.6	93.6	93.6	97.7	98.3	99.3	90.4	90.4
Recreation	73.7	73.8	73.8	73.6	74.1	74.0	73.7	73.3	74.3	74.0	73.3	73.6	73.7	73.7	72.8	72.8
Education & Communicatic	119.2	98.8	98.5	98.4	98.4	98.4	97.6	97.6	97.6	97.6	93.2	93.4	93.0	93.6	93.8	93.8
Other Goods & Services	85.4	87.1	89.6	90.7	94.8	94.8	93.7	93.7	93.7	93.7	94.2	94.9	94.9	95.9	97.0	97.5

Table 9: Consumer Price Index, by Group, Rota: Q1 2010 - Q4 2021 (Continued)
2nd Quarter 2017 = 100

Group	Year and Quarter [YYYY.QQ]															
	2014.01	2014.02	2014.03	2014.04	2015.01	2015.02	2015.03	2015.04	2016.01	2016.02	2016.03	2016.04	2017.01	2017.02	2017.03	2017.04
All Items	101.3	101.6	101.7	99.2	97.5	97.4	96.8	97.3	96.6	97.1	97.1	96.9	100.3	100.0	99.5	100.4
Food	96.2	93.4	94.3	95.8	96.9	98.1	98.9	99.7	101.3	99.7	99.9	100.1	100.0	100.0	100.0	100.3
Alcoholic Beverages	119.9	104.6	95.5	100.0	100.1	102.8	112.0	115.6	100.0	98.2	100.0	100.0	100.0	100.0	100.0	96.3
Housing & Utilities	104.4	106.4	105.8	99.1	94.3	95.6	93.5	93.8	91.3	93.7	93.3	93.9	100.6	100.0	99.4	103.1
Apparel	92.2	92.2	93.5	93.6	93.5	93.5	92.7	97.0	96.9	99.6	99.5	99.5	100.2	100.0	100.0	100.0
Transportation	112.2	112.1	115.3	109.5	109.5	102.4	101.9	100.2	98.2	93.5	94.4	97.6	100.8	100.0	100.0	100.2
Medical Care	101.0	101.1	100.2	100.1	100.1	100.1	100.1	100.4	100.4	100.4	100.2	100.2	99.9	100.0	100.0	99.9
Recreation	73.9	75.9	77.1	77.1	77.1	72.1	76.6	76.6	95.0	95.0	95.0	95.0	100.0	100.0	100.0	100.0
Education & Communicatic	94.3	93.8	94.1	95.0	95.0	95.0	95.0	95.8	100.0	100.0	100.0	100.0	100.0	100.0	98.8	97.8
Other Goods & Services	97.0	97.4	97.0	104.3	106.8	107.2	107.2	107.2	106.9	107.2	107.3	99.0	99.7	100.0	100.7	107.9

Table 9: Consumer Price Index, by Group, Rota: Q1 2010 - Q4 2021 (Continued)
2nd Quarter 2017 = 100

Group	Year and Quarter [YYYY.QQ]															
	2018.01	2018.02	2018.03	2018.04	2019.01	2019.02	2019.03	2019.04	2020.01	2020.02	2020.03	2020.04	2021.01	2021.02	2021.03	2021.04
All Items	101.4	100.4	100.3	100.2	100.7	100.4	100.7	100.6	100.5	100.6	100.8	100.7	100.5	101.0	101.2	102.7
Food	100.5	100.9	100.7	100.9	103.2	102.8	102.5	102.2	102.6	102.5	102.2	102.9	100.9	100.6	100.4	101.4
Alcoholic Beverages	100.0	100.0	100.0	100.0	107.4	108.3	99.4	99.4	97.1	102.6	102.6	102.6	102.6	102.6	102.6	102.6
Housing & Utilities	98.9	98.9	99.0	100.4	98.2	99.1	98.2	98.2	99.5	99.5	100.4	99.2	101.9	105.7	109.1	112.7
Apparel	100.0	100.0	85.0	85.0	85.0	85.0	85.0	85.0	85.0	85.0	83.6	83.6	83.6	83.6	83.6	100.5
Transportation	96.8	96.8	95.7	95.7	103.8	105.5	104.3	103.7	101.4	101.3	102.4	98.5	99.7	99.7	99.8	99.8
Medical Care	98.0	98.0	98.0	98.0	98.0	98.0	98.0	98.0	98.0	98.4	98.4	99.0	99.0	99.0	93.2	87.9
Recreation	100.0	100.0	100.0	100.0	100.0	100.0	100.0	100.0	100.0	100.0	100.0	100.0	100.0	100.0	100.0	100.0
Education & Communicatic	100.7	100.1	100.0	98.6	98.0	97.2	98.3	98.3	98.0	98.0	98.3	98.3	98.3	98.8	99.0	100.6
Other Goods & Services	107.9	102.6	104.6	107.4	107.5	107.5	107.5	107.5	107.5	108.1	108.1	108.2	108.1	108.1	108.1	108.1

Chart 1: Quarterly Inflation Rate, All Items, Rota, Q1 2018 to Q4 2021

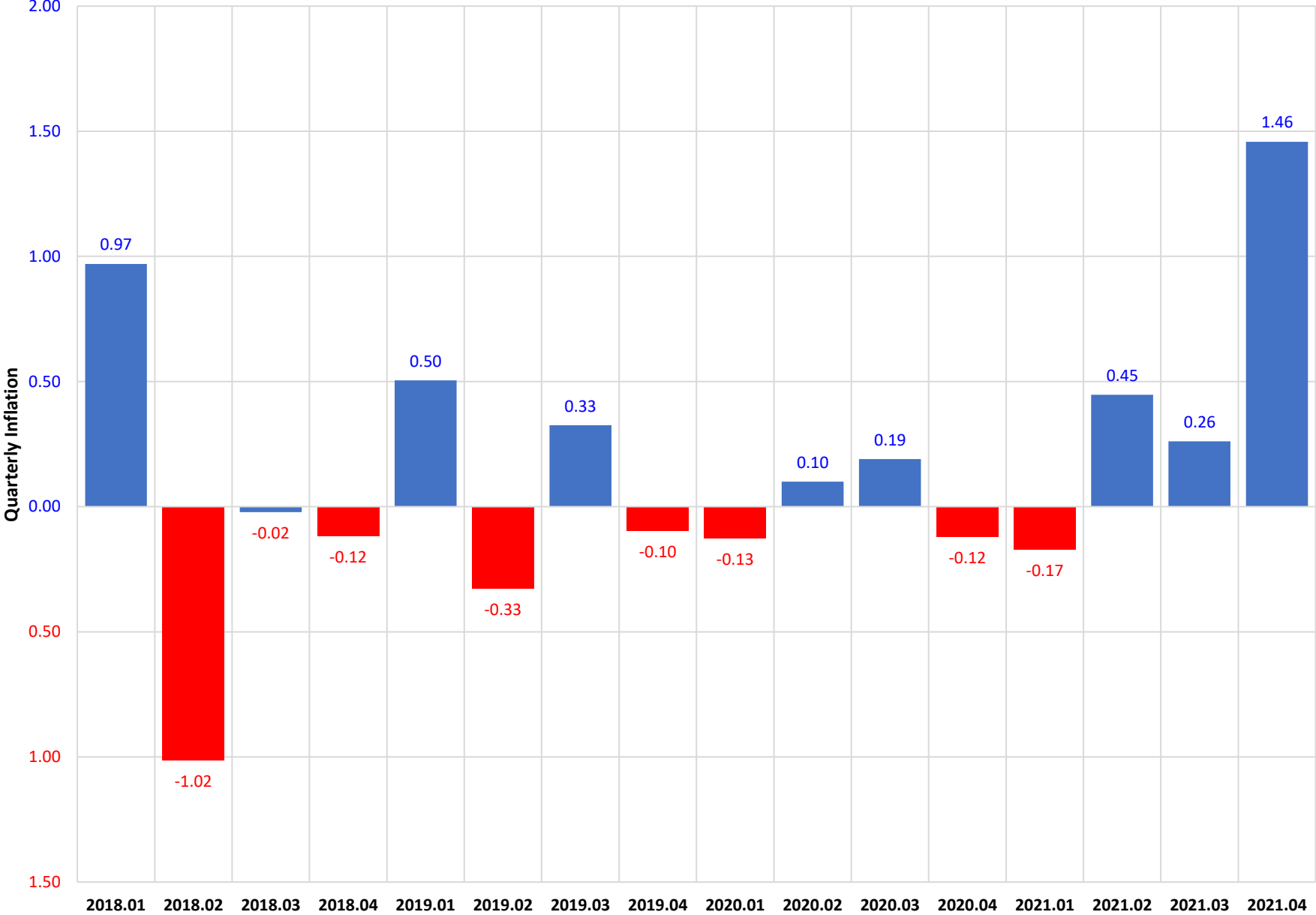


Chart 2: Quarterly Inflation, By Group, Rota, Q4 2021

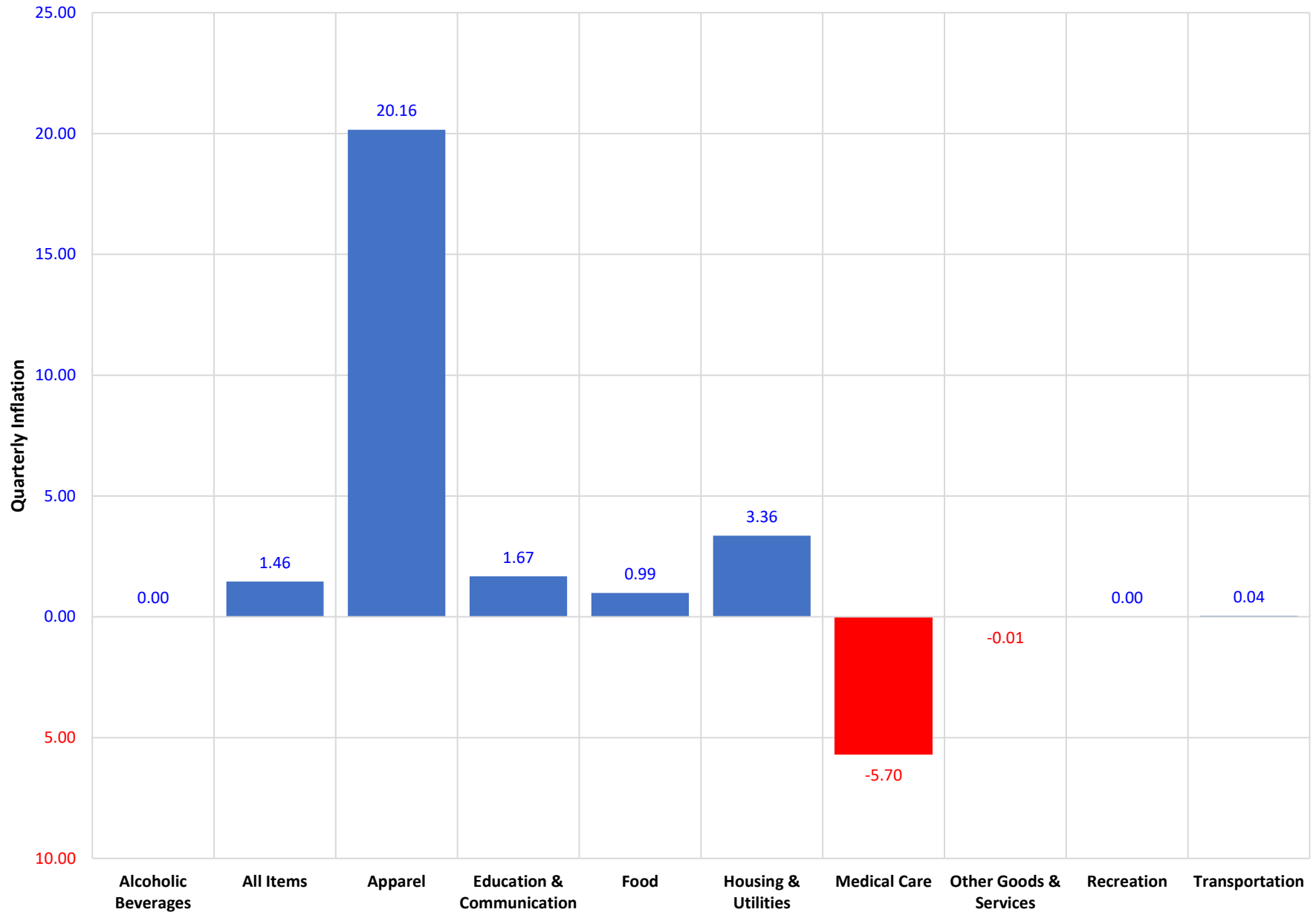


Chart 3: Annual Inflation Rate, All Items, Rota, Q4 2011 to Q4 2021

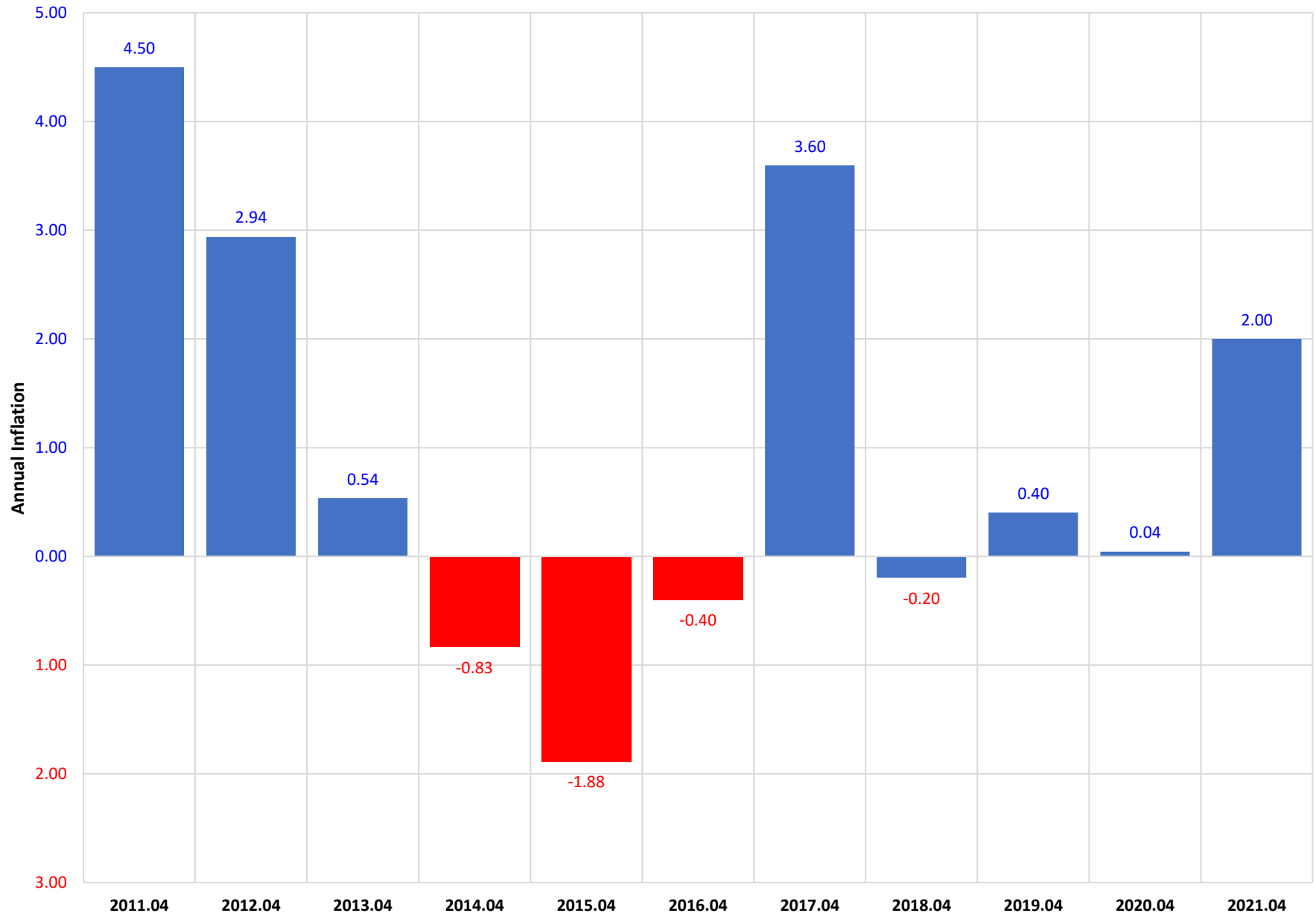


Chart 4: Annual Inflation Rate, By Group, Rota, Q4 2021

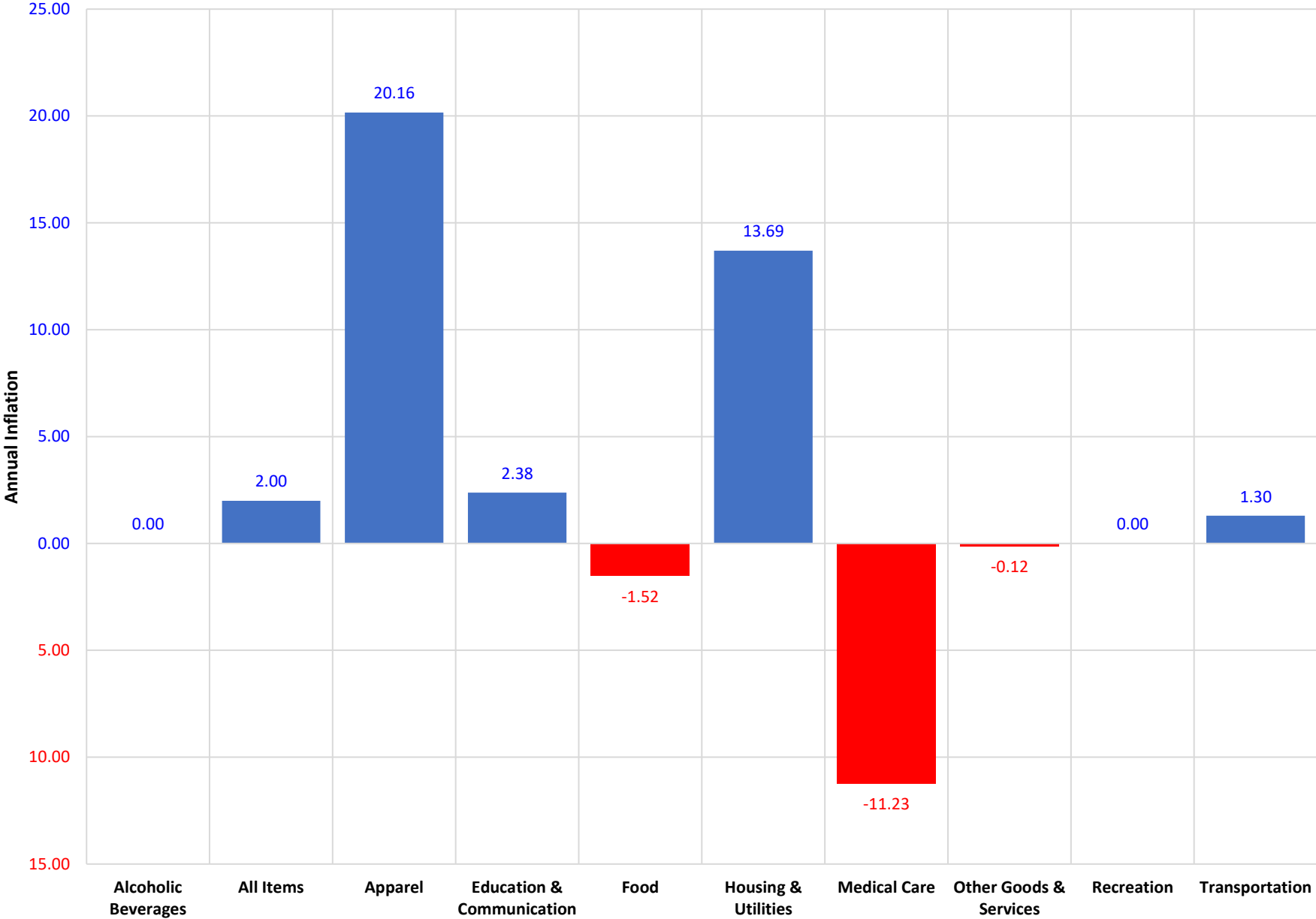


Chart 5: Consumer Price Index, All Items & 3 Largest Groups, Rota, Q1 2018 to Q4 2021

