

Table 1: Quarterly Inflation, by Group, Rota: Q1 2019 - Q4 2022
2nd Quarter 2017 = 100

Group	Year and Quarter [YYYY.QQ]															
	2019.01	2019.02	2019.03	2019.04	2020.01	2020.02	2020.03	2020.04	2021.01	2021.02	2021.03	2021.04	2022.01	2022.02	2022.03	2022.04
All Items	0.5	-0.3	0.3	-0.1	-0.1	0.1	0.0	-0.1	-0.2	0.4	0.3	0.9	1.3	1.5	1.1	1.3
Food	2.3	-0.4	-0.3	-0.3	0.4	-0.1	0.0	0.7	-2.0	-0.3	-0.2	0.9	2.0	1.8	2.0	2.2
Alcoholic Beverages	7.4	0.8	-8.2	0.0	-2.3	5.7	0.0	0.0	0.0	0.0	0.0	0.0	0.7	7.5	3.7	2.6
Housing & Utilities	-2.2	0.9	-1.0	0.0	1.4	0.0	0.0	-1.2	2.6	3.5	3.1	4.6	3.8	0.0	5.1	1.8
Apparel	0.0	0.0	0.0	0.0	0.0	0.0	0.0	0.0	0.0	0.0	0.0	0.0	0.0	0.0	0.0	-1.7
Transportation	8.5	1.6	-1.1	-0.6	-2.2	-0.1	0.0	-3.8	1.2	0.0	0.0	0.0	0.0	9.3	-0.1	-4.7
Medical Care	0.0	0.0	0.0	0.0	0.0	0.4	0.0	0.7	0.0	0.0	-5.9	0.0	11.3	0.0	0.0	0.0
Recreation	0.0	0.0	0.0	0.0	0.0	0.0	0.0	0.0	0.0	0.0	0.0	0.0	0.0	0.0	0.0	0.0
Education & Communication	-0.6	-0.9	1.2	0.0	-0.4	0.0	0.0	0.0	0.0	0.5	0.2	0.8	1.4	0.4	0.0	2.1
Other Goods & Services	0.1	0.0	0.0	0.0	0.0	0.6	0.0	0.1	-0.1	0.0	0.0	0.0	0.0	2.8	2.0	0.0

Table 2: Annual Inflation, by Group, Rota: Q4 2011 - Q4 2022
2nd Quarter 2017 = 100

Group	Year and Quarter [YYYY.QQ]											
	2011.04	2012.04	2013.04	2014.04	2015.04	2016.04	2017.04	2018.04	2019.04	2020.04	2021.04	2022.04
All Items	4.5	2.9	0.5	-0.8	-1.9	-0.4	3.6	-0.2	0.4	-0.1	1.4	5.4
Food	2.2	2.1	7.7	-1.1	4.1	0.4	0.2	0.6	1.3	1.1	-1.6	8.2
Alcoholic Beverages	0.2	1.1	24.2	-14.6	15.5	-13.5	-3.7	3.9	-0.6	3.2	0.0	15.2
Housing & Utilities	3.1	4.9	0.6	-5.2	-5.3	0.0	9.8	-2.6	-2.2	0.2	14.6	11.0
Apparel	0.3	-6.1	0.4	1.3	3.7	2.6	0.5	-15.0	0.0	0.0	0.0	-1.7
Transportation	12.6	4.1	-3.2	-0.9	-8.5	-2.5	2.6	-4.5	8.4	-6.0	1.3	4.1
Medical Care	11.8	4.2	-7.4	10.7	0.4	-0.2	-0.3	-1.9	0.0	1.0	-5.9	11.3
Recreation	-0.4	0.4	-1.1	5.9	-0.6	24.1	5.2	0.0	0.0	0.0	0.0	0.0
Education & Communication	-0.8	-4.3	0.5	1.2	0.9	4.3	-2.2	0.8	-0.3	-0.4	1.5	3.9
Other Goods & Services	3.4	1.2	2.7	7.0	2.7	-7.6	9.0	-0.4	0.1	0.7	-0.1	4.8

Table 3: Consumer Price Index, by Group, Rota: Q1 2010 - Q4 2022
2nd Quarter 2017 = 100

Group	Year and Quarter [YYYY.QQ]															
	2010.01	2010.02	2010.03	2010.04	2011.01	2011.02	2011.03	2011.04	2012.01	2012.02	2012.03	2012.04	2013.01	2013.02	2013.03	2013.04
All Items	90.7	90.6	91.6	92.5	94.5	95.3	96.7	96.7	97.1	97.3	98.3	99.5	99.6	100.2	99.7	100.0
Food	87.7	87.7	86.9	86.3	86.7	86.6	88.0	88.1	89.3	89.7	90.1	90.0	90.0	92.0	92.5	96.9
Alcoholic Beverages	91.8	91.8	93.2	93.2	93.4	93.4	93.4	93.4	94.3	94.3	94.3	94.4	94.3	94.3	103.4	117.2
Housing & Utilities	95.3	95.4	97.8	96.1	99.0	99.0	99.1	99.1	99.6	99.6	102.1	104.0	104.4	105.1	105.1	104.5
Apparel	99.7	100.2	97.4	97.7	97.7	97.2	98.1	97.9	97.1	96.9	95.0	92.0	90.9	91.9	92.3	92.4
Transportation	94.1	95.6	96.5	97.4	101.2	109.6	110.1	109.6	110.6	112.5	113.8	114.2	113.7	111.0	113.0	110.5
Medical Care	71.4	71.4	71.4	83.8	83.8	83.8	93.7	93.7	93.6	93.6	93.6	97.7	98.3	99.3	90.4	90.4
Recreation	73.7	73.8	73.8	73.6	74.1	74.0	73.7	73.3	74.3	74.0	73.3	73.6	73.7	73.7	72.8	72.8
Education & Communication	119.2	98.8	98.5	98.4	98.4	98.4	97.6	97.6	97.6	97.6	93.2	93.4	93.0	93.6	93.8	93.8
Other Goods & Services	85.4	87.1	89.6	90.7	94.8	94.8	93.7	93.7	93.7	93.7	94.2	94.9	94.9	95.9	97.0	97.5

Chart 1: Quarterly Inflation Rate, All Items, Rota, Q1 2019 to Q4 2022

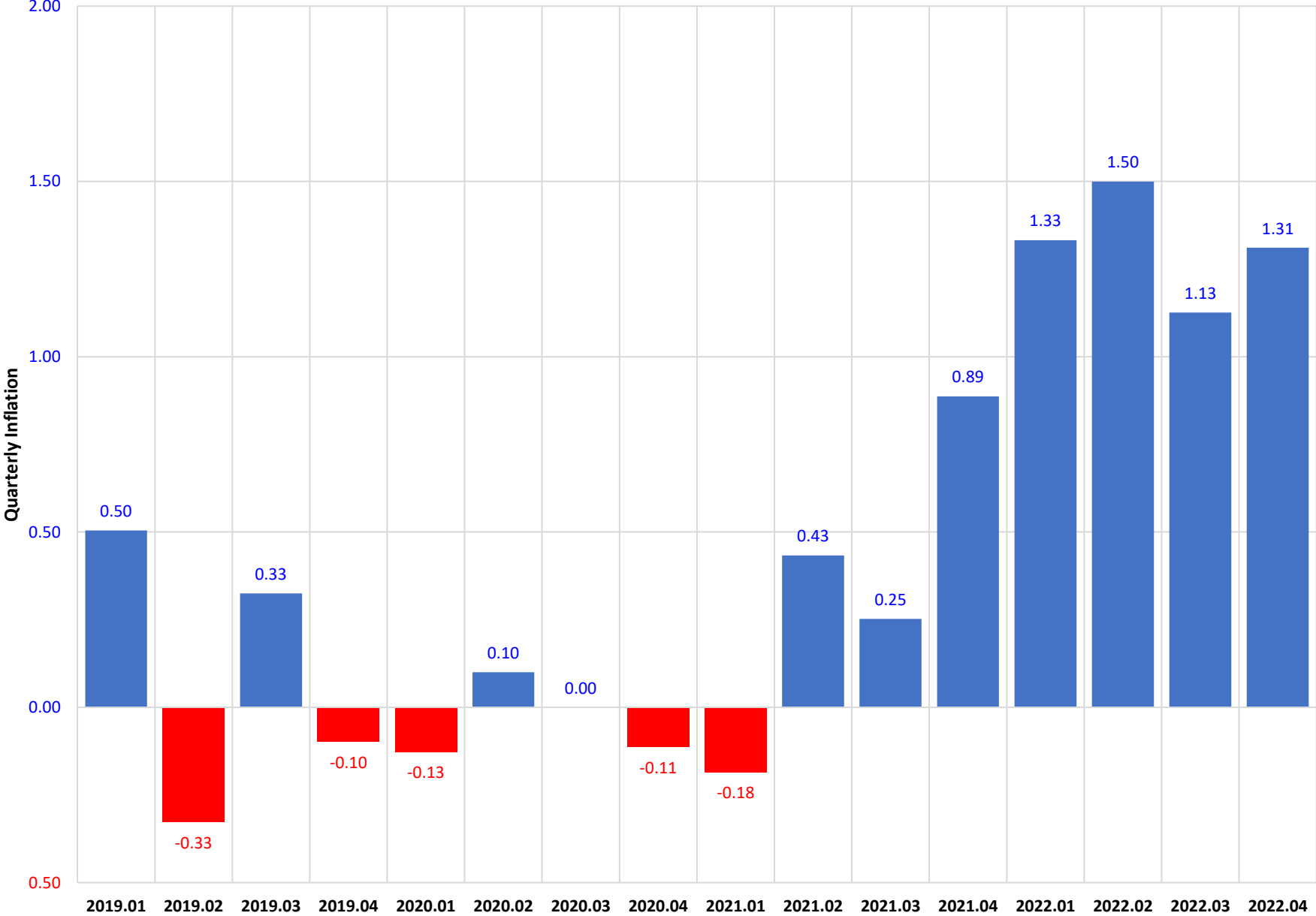


Chart 2: Quarterly Inflation, By Group, Rota, Q4 2022

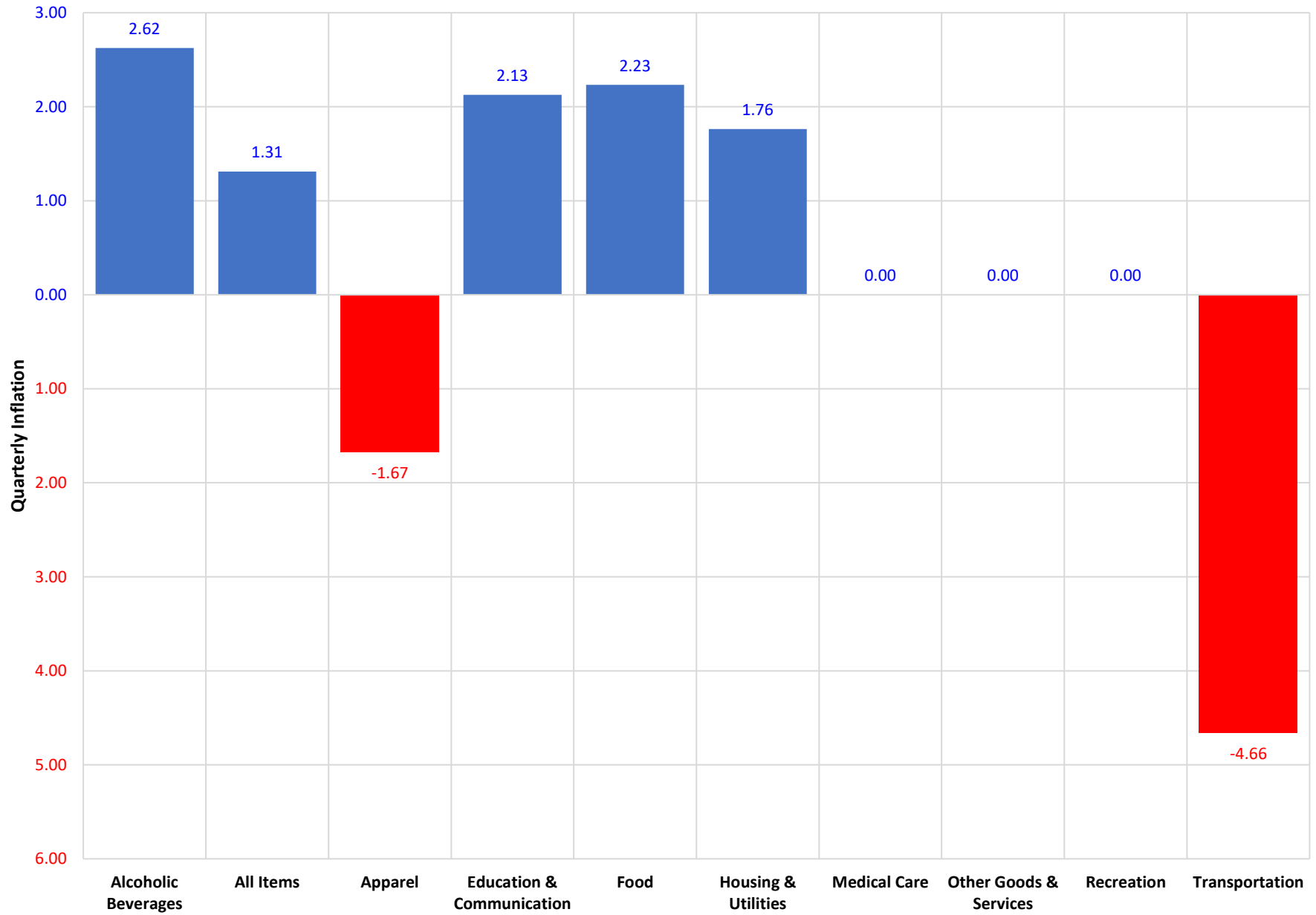


Chart 3: Annual Inflation Rate, All Items, Rota, Q4 2011 to Q4 2022

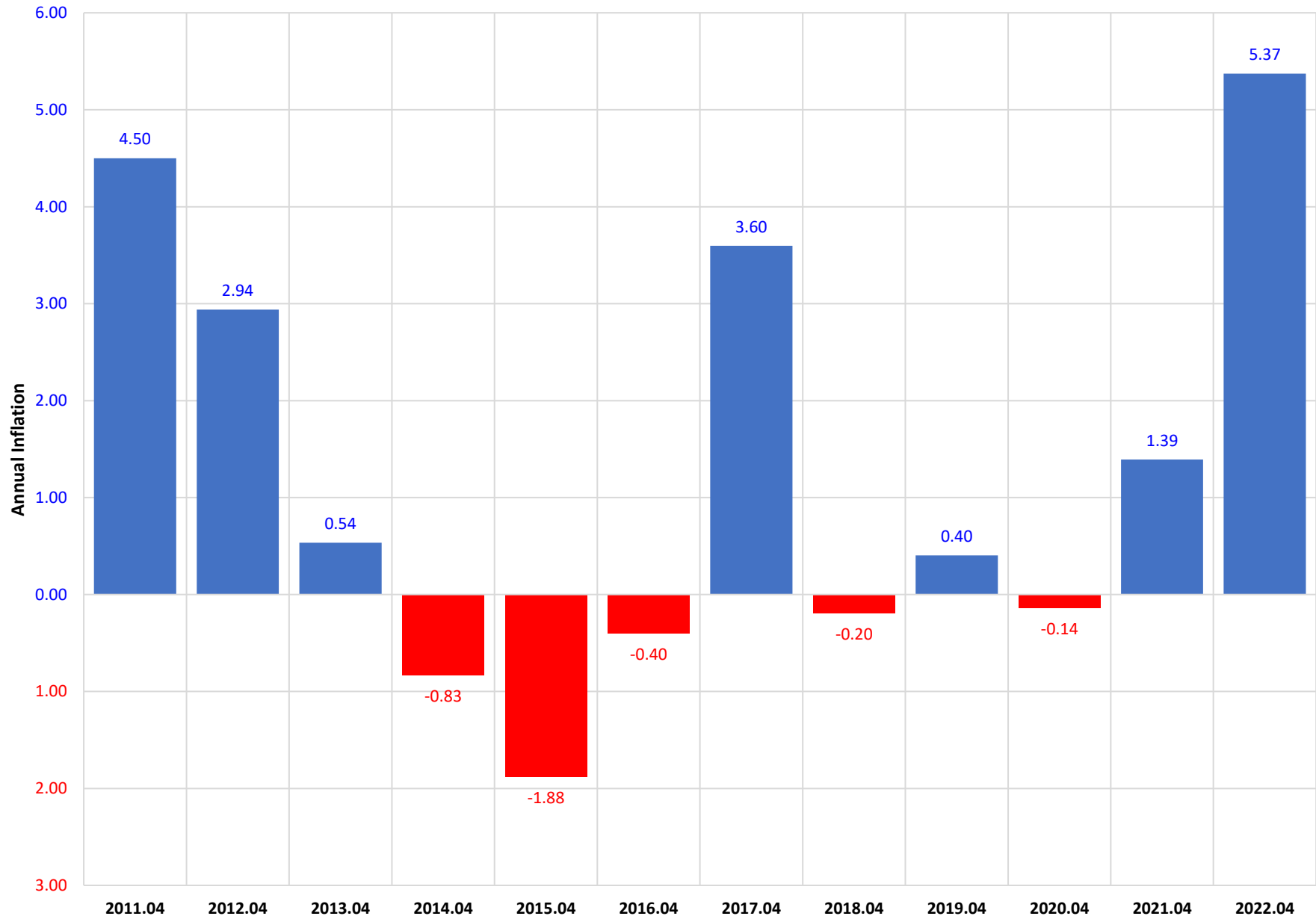


Chart 4: Annual Inflation Rate, By Group, Rota, Q4 2022

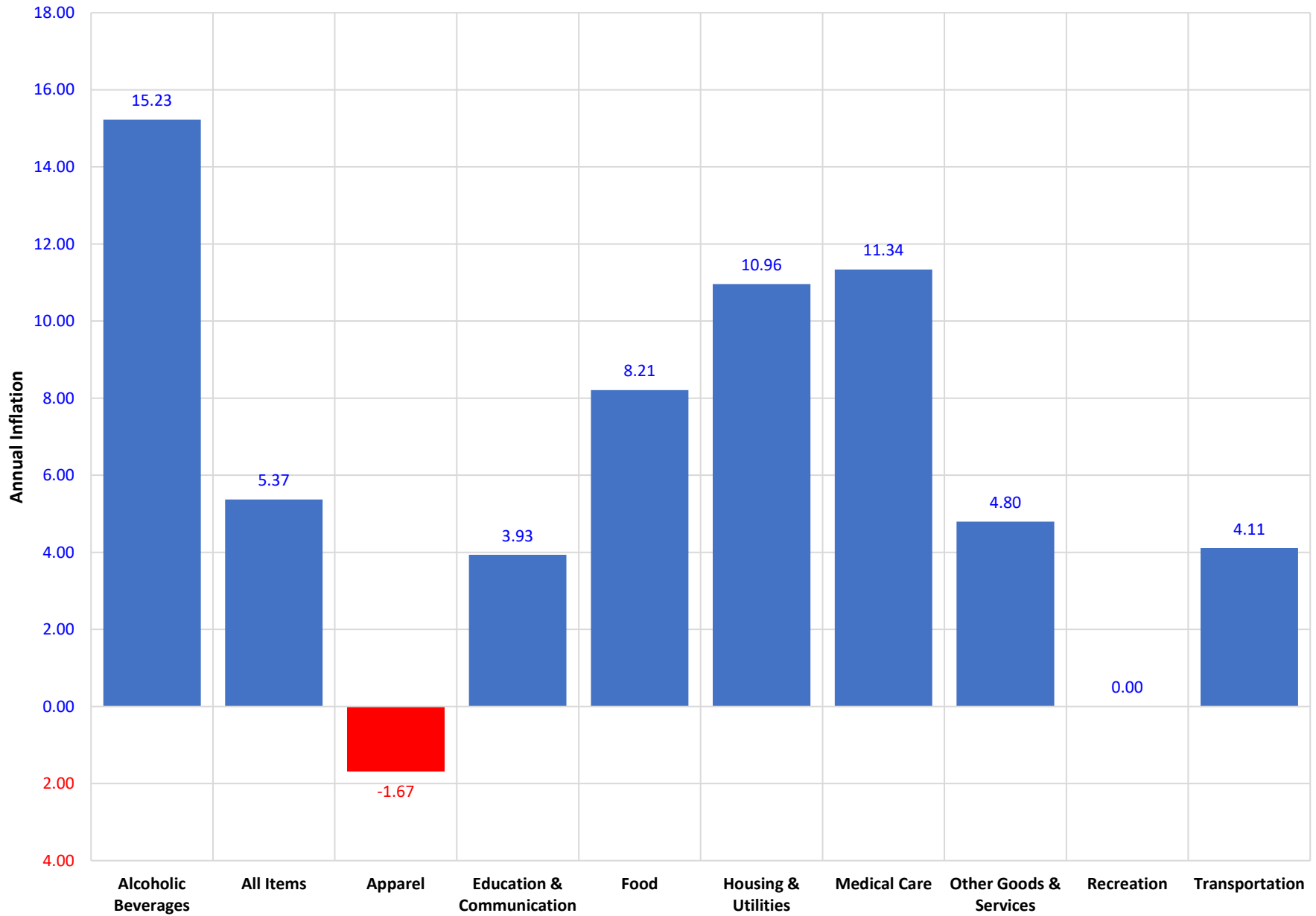


Chart 5: Consumer Price Index, All Items & 3 Largest Groups, Rota, Q1 2019 to Q4 2022

