

**Table 1: Quarterly Inflation, by Group, Saipan: Q4 2013 - Q3 2017**  
2nd Quarter 2017 = 100

| Group                     | Year and Quarter [YYYY.QQ] |         |         |         |         |         |         |         |         |         |         |         |         |         |         |         |
|---------------------------|----------------------------|---------|---------|---------|---------|---------|---------|---------|---------|---------|---------|---------|---------|---------|---------|---------|
|                           | 2013.04                    | 2014.01 | 2014.02 | 2014.03 | 2014.04 | 2015.01 | 2015.02 | 2015.03 | 2015.04 | 2016.01 | 2016.02 | 2016.03 | 2016.04 | 2017.01 | 2017.02 | 2017.03 |
| All Items                 | -0.2                       | 0.5     | 0.8     | -0.6    | 0.4     | -3.5    | 0.9     | -1.5    | 0.1     | 0.3     | 1.3     | 0.2     | 0.3     | 3.2     | 0.2     | 0.1     |
| Food                      | 0.0                        | 1.8     | 0.7     | 0.1     | 3.4     | 0.7     | 0.1     | -0.3    | 0.3     | -0.4    | 0.5     | -1.2    | 0.0     | 0.8     | -0.1    | -0.2    |
| Alcoholic Beverages       | 0.0                        | 0.9     | 1.4     | 0.0     | 0.5     | 0.0     | 0.0     | 2.6     | 0.0     | 0.0     | -3.1    | 0.9     | 0.0     | 0.0     | 0.0     | 0.0     |
| Housing & Utilities       | -0.2                       | -0.5    | 1.4     | -1.9    | -3.3    | -6.7    | 2.4     | -3.2    | 0.1     | -3.8    | 3.5     | -0.4    | 0.9     | 12.6    | 0.5     | 1.2     |
| Apparel                   | 0.0                        | 1.0     | 0.1     | -1.7    | 0.3     | 1.2     | 0.0     | 0.0     | 0.1     | 0.0     | -0.2    | -0.1    | 0.0     | -2.6    | 2.5     | -1.0    |
| Transportation            | -0.7                       | 1.1     | 0.7     | 0.0     | 1.6     | -8.0    | 1.0     | -2.7    | 0.0     | -1.9    | 1.7     | 2.1     | 0.4     | 0.0     | -0.7    | 0.0     |
| Medical Care              | 0.0                        | 0.2     | 0.1     | 0.1     | 0.1     | 0.0     | 0.0     | 0.0     | 0.0     | 0.3     | 0.0     | 0.0     | 0.0     | 0.1     | 0.0     | -2.3    |
| Recreation                | -0.1                       | 0.4     | 2.2     | -2.1    | 0.0     | -0.2    | -0.3    | -0.1    | 0.0     | 44.4    | 0.0     | 0.2     | -0.3    | -0.4    | 0.0     | 0.0     |
| Education & Communication | 0.0                        | -1.5    | 0.0     | 0.5     | -0.4    | 0.0     | 0.0     | 0.1     | 0.0     | 7.0     | 0.0     | 0.0     | 0.0     | 0.0     | 0.1     | -0.3    |
| Other Goods & Services    | -0.2                       | 0.1     | 0.0     | 0.0     | 11.2    | 4.3     | 0.0     | 0.1     | 0.0     | -0.1    | 0.1     | 0.3     | 0.0     | 1.2     | 2.5     | 0.3     |

**Table 2: Annual Inflation, by Group, Saipan: Q3 2004 - Q3 2017**  
2nd Quarter 2017 = 100

| Group                     | Year and Quarter [YYYY.QQ] |         |         |         |         |         |         |         |         |         |         |         |         |         |
|---------------------------|----------------------------|---------|---------|---------|---------|---------|---------|---------|---------|---------|---------|---------|---------|---------|
|                           | 2004.03                    | 2005.03 | 2006.03 | 2007.03 | 2008.03 | 2009.03 | 2010.03 | 2011.03 | 2012.03 | 2013.03 | 2014.03 | 2015.03 | 2016.03 | 2017.03 |
| All Items                 | 0.7                        | 1.3     | 13.4    | 3.5     | 9.6     | -1.9    | 4.9     | 6.3     | 0.1     | -1.2    | 0.4     | -3.7    | 1.9     | 3.8     |
| Food                      | 4.5                        | 2.7     | 2.0     | 5.6     | 10.2    | 7.6     | -1.8    | 7.5     | -0.2    | 1.6     | 2.7     | 3.9     | -0.8    | 0.5     |
| Alcoholic Beverages       | 0.1                        | 1.5     | 0.6     | 3.9     | 7.0     | 7.4     | 0.9     | 3.8     | 0.8     | 3.7     | 2.3     | 3.1     | -2.2    | 0.0     |
| Housing & Utilities       | -1.8                       | 1.1     | 45.5    | 6.7     | 20.3    | -16.1   | 9.6     | -4.3    | -0.7    | 2.0     | -1.2    | -10.7   | -0.8    | 15.6    |
| Apparel                   | -5.4                       | -2.5    | 14.4    | 2.4     | -1.6    | 3.9     | -3.1    | 0.0     | -2.7    | -3.1    | -0.7    | 1.5     | -0.2    | -1.1    |
| Transportation            | 0.3                        | 1.0     | 0.3     | 0.0     | -0.1    | 9.8     | 11.0    | 10.5    | 0.1     | -1.5    | 1.1     | -8.1    | 1.9     | -0.4    |
| Medical Care              | 0.0                        | 0.1     | 6.2     | 1.1     | 4.0     | 1.3     | 1.2     | 35.7    | 3.0     | -7.8    | 0.4     | 0.1     | 0.3     | -2.3    |
| Recreation                | -0.2                       | 1.9     | 6.3     | -0.3    | -1.7    | 3.6     | -2.1    | 1.1     | 1.5     | -1.0    | 0.3     | -0.5    | 44.7    | -0.6    |
| Education & Communication | -1.5                       | 1.0     | 1.8     | 0.7     | 0.9     | 6.0     | -0.6    | -0.3    | -0.1    | -9.5    | -1.1    | -0.2    | 7.0     | -0.2    |
| Other Goods & Services    | 8.3                        | 0.0     | 0.0     | 0.0     | 7.7     | 2.5     | 1.7     | 8.0     | 0.6     | 0.3     | 0.0     | 16.0    | 0.3     | 4.1     |

**Table 3: Consumer Price Index, by Group, Saipan: Q1 2009 - Q3 2017**  
2nd Quarter 2017 = 100

| Group                     | Year and Quarter [YYYY.QQ] |         |         |         |         |         |         |         |         |         |         |         |         |         |         |         |
|---------------------------|----------------------------|---------|---------|---------|---------|---------|---------|---------|---------|---------|---------|---------|---------|---------|---------|---------|
|                           | 2009.01                    | 2009.02 | 2009.03 | 2009.04 | 2010.01 | 2010.02 | 2010.03 | 2010.04 | 2011.01 | 2011.02 | 2011.03 | 2011.04 | 2012.01 | 2012.02 | 2012.03 | 2012.04 |
| All Items                 | 87.1                       | 88.6    | 88.8    | 91.8    | 92.4    | 92.8    | 93.1    | 96.9    | 95.5    | 96.3    | 99.0    | 99.2    | 99.6    | 98.9    | 99.1    | 100.2   |
| Food                      | 84.4                       | 85.6    | 87.7    | 87.4    | 86.1    | 86.5    | 86.1    | 87.3    | 89.1    | 91.4    | 92.6    | 92.3    | 92.2    | 92.4    | 92.4    | 92.2    |
| Alcoholic Beverages       | 81.3                       | 88.2    | 88.5    | 88.5    | 89.3    | 89.3    | 89.3    | 91.7    | 92.3    | 92.3    | 92.7    | 88.6    | 91.7    | 93.0    | 93.5    | 93.5    |
| Housing & Utilities       | 95.5                       | 96.9    | 94.2    | 103.0   | 102.0   | 103.1   | 103.2   | 104.2   | 97.3    | 97.6    | 98.8    | 99.3    | 99.4    | 98.9    | 98.1    | 99.8    |
| Apparel                   | 105.5                      | 105.5   | 109.1   | 110.1   | 108.4   | 105.8   | 105.7   | 105.9   | 105.3   | 104.8   | 105.7   | 107.1   | 105.8   | 105.1   | 102.8   | 101.3   |
| Transportation            | 83.7                       | 86.5    | 87.7    | 90.2    | 94.6    | 95.3    | 97.3    | 103.2   | 103.6   | 104.7   | 107.5   | 107.6   | 109.4   | 105.7   | 107.6   | 109.8   |
| Medical Care              | 78.5                       | 78.5    | 76.0    | 76.1    | 77.6    | 77.7    | 76.9    | 92.2    | 92.1    | 92.1    | 104.4   | 104.4   | 104.3   | 106.5   | 107.5   | 109.3   |
| Recreation                | 67.6                       | 69.8    | 70.0    | 70.2    | 68.7    | 69.2    | 68.6    | 68.4    | 69.4    | 69.3    | 69.3    | 68.7    | 70.5    | 70.5    | 70.4    | 70.3    |
| Education & Communication | 97.2                       | 97.1    | 105.5   | 105.9   | 105.2   | 105.2   | 104.9   | 104.5   | 104.2   | 104.2   | 104.6   | 105.2   | 105.1   | 103.9   | 104.5   | 104.9   |
| Other Goods & Services    | 74.0                       | 74.0    | 74.7    | 75.0    | 74.7    | 76.0    | 76.0    | 77.4    | 81.8    | 81.9    | 82.1    | 82.2    | 82.4    | 82.5    | 82.6    | 82.6    |

**Table 3: Consumer Price Index, by Group, Saipan: Q1 2009 - Q3 2017 (Continued)**  
**2nd Quarter 2017 = 100**

| Group                     | Year and Quarter [YYYY.QQ] |         |         |         |         |         |         |         |         |         |         |         |         |         |         |         |
|---------------------------|----------------------------|---------|---------|---------|---------|---------|---------|---------|---------|---------|---------|---------|---------|---------|---------|---------|
|                           | 2013.01                    | 2013.02 | 2013.03 | 2013.04 | 2014.01 | 2014.02 | 2014.03 | 2014.04 | 2015.01 | 2015.02 | 2015.03 | 2015.04 | 2016.01 | 2016.02 | 2016.03 | 2016.04 |
| All Items                 | 99.1                       | 99.0    | 97.9    | 97.7    | 98.2    | 99.0    | 98.3    | 98.8    | 95.3    | 96.1    | 94.7    | 94.7    | 95.0    | 96.2    | 96.4    | 96.7    |
| Food                      | 92.4                       | 92.6    | 93.8    | 93.9    | 95.6    | 96.3    | 96.3    | 99.6    | 100.3   | 100.4   | 100.1   | 100.4   | 100.0   | 100.5   | 99.3    | 99.3    |
| Alcoholic Beverages       | 95.1                       | 95.1    | 97.0    | 97.0    | 97.8    | 99.2    | 99.2    | 99.6    | 99.6    | 99.6    | 102.2   | 102.2   | 102.2   | 99.1    | 100.0   | 100.0   |
| Housing & Utilities       | 100.1                      | 100.1   | 100.1   | 99.9    | 99.4    | 100.8   | 98.9    | 95.6    | 89.2    | 91.3    | 88.3    | 88.4    | 85.0    | 88.0    | 87.6    | 88.3    |
| Apparel                   | 100.9                      | 100.0   | 99.5    | 99.5    | 100.5   | 100.6   | 98.9    | 99.2    | 100.4   | 100.4   | 100.3   | 100.4   | 100.4   | 100.3   | 100.2   | 100.2   |
| Transportation            | 106.2                      | 105.4   | 106.0   | 105.3   | 106.4   | 107.2   | 107.2   | 108.9   | 100.2   | 101.2   | 98.5    | 98.5    | 96.6    | 98.3    | 100.4   | 100.7   |
| Medical Care              | 110.6                      | 110.6   | 99.1    | 99.1    | 99.4    | 99.4    | 99.5    | 99.6    | 99.6    | 99.6    | 99.6    | 99.6    | 99.9    | 99.9    | 99.9    | 99.9    |
| Recreation                | 70.0                       | 70.0    | 69.7    | 69.6    | 69.9    | 71.4    | 69.9    | 69.9    | 69.8    | 69.6    | 69.5    | 69.5    | 100.4   | 100.4   | 100.7   | 100.4   |
| Education & Communication | 94.3                       | 94.3    | 94.6    | 94.6    | 93.1    | 93.1    | 93.6    | 93.2    | 93.2    | 93.3    | 93.4    | 93.4    | 99.9    | 99.9    | 99.9    | 99.9    |
| Other Goods & Services    | 82.6                       | 82.6    | 82.8    | 82.7    | 82.8    | 82.8    | 82.8    | 92.0    | 96.0    | 96.0    | 96.0    | 96.0    | 95.9    | 96.0    | 96.3    | 96.4    |

| Group                     | Year and Quarter [YYYY.QQ] |         |         |
|---------------------------|----------------------------|---------|---------|
|                           | 2017.01                    | 2017.02 | 2017.03 |
| All Items                 | 99.8                       | 100.0   | 100.1   |
| Food                      | 100.1                      | 100.0   | 99.8    |
| Alcoholic Beverages       | 100.0                      | 100.0   | 100.0   |
| Housing & Utilities       | 99.5                       | 100.0   | 101.2   |
| Apparel                   | 97.5                       | 100.0   | 99.0    |
| Transportation            | 100.7                      | 100.0   | 100.0   |
| Medical Care              | 100.0                      | 100.0   | 97.7    |
| Recreation                | 100.0                      | 100.0   | 100.0   |
| Education & Communication | 99.9                       | 100.0   | 99.7    |
| Other Goods & Services    | 97.6                       | 100.0   | 100.3   |

Chart 1: Quarterly Inflation Rate, All Items, Saipan, Q4 2012 to Q3 2017

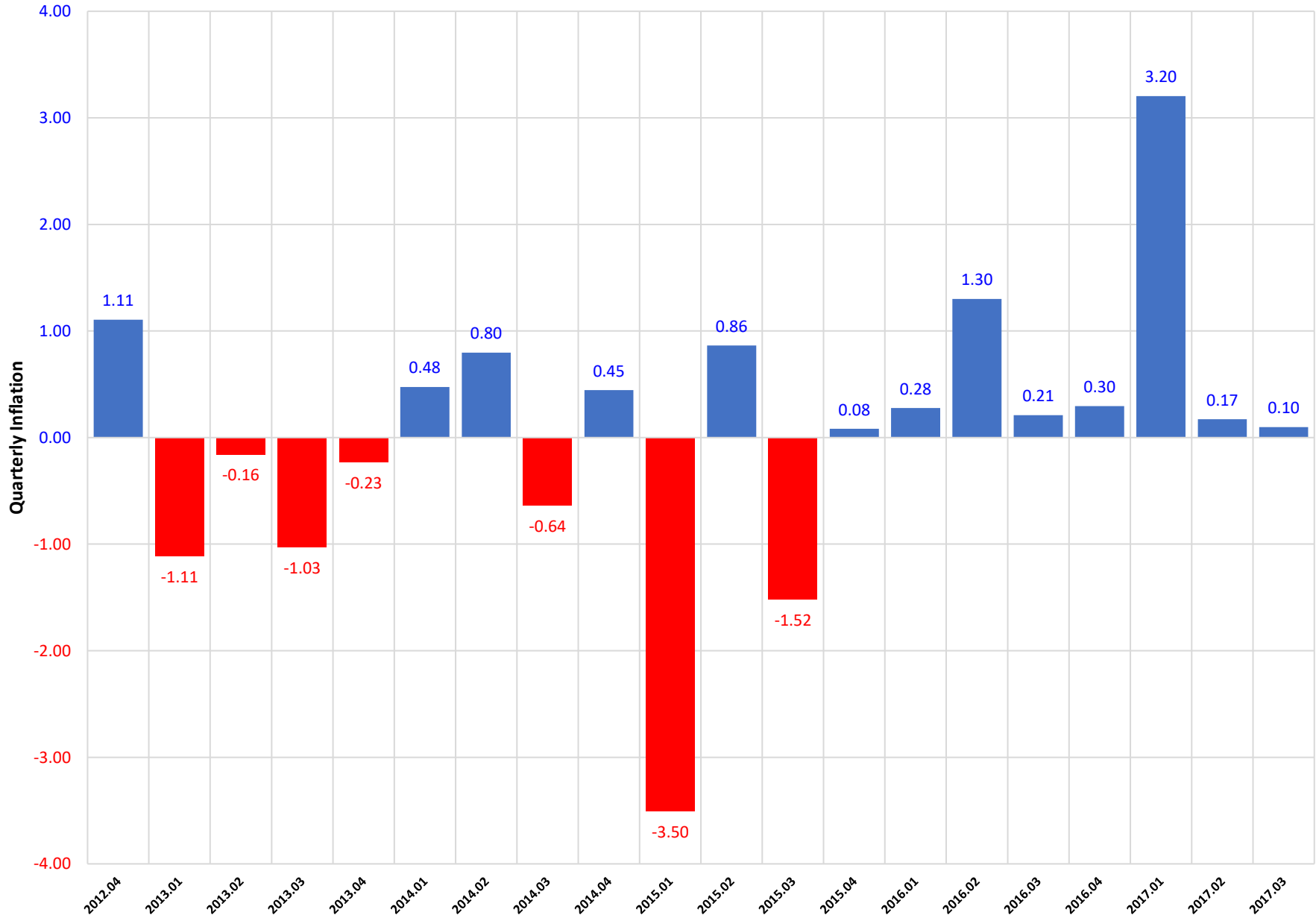


Chart 2: Quarterly Inflation Rate, By Group, Saipan, Q3 2017

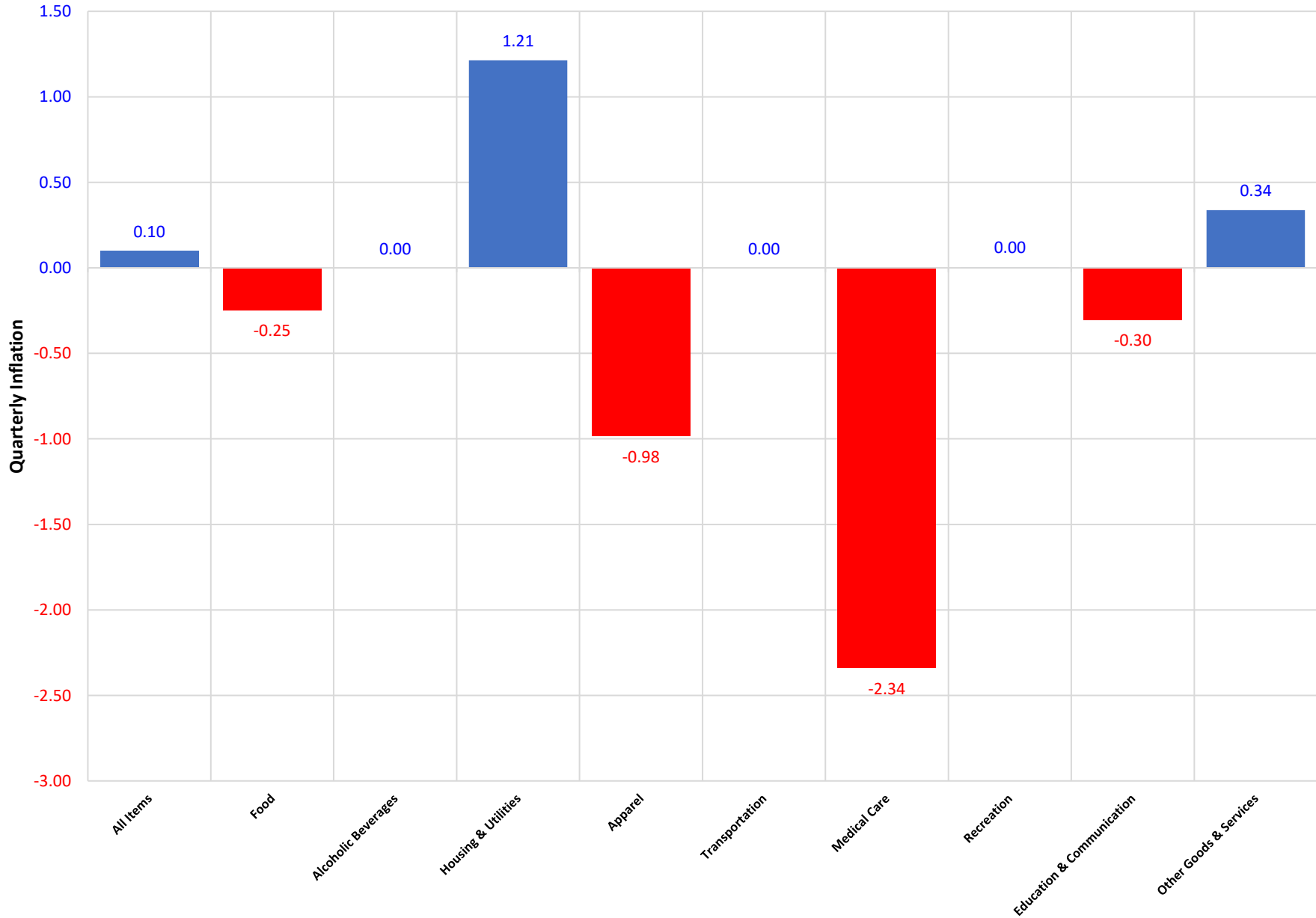


Chart 3: Annual Inflation Rate, All Items, Saipan, Q3 2004 to Q3 2017

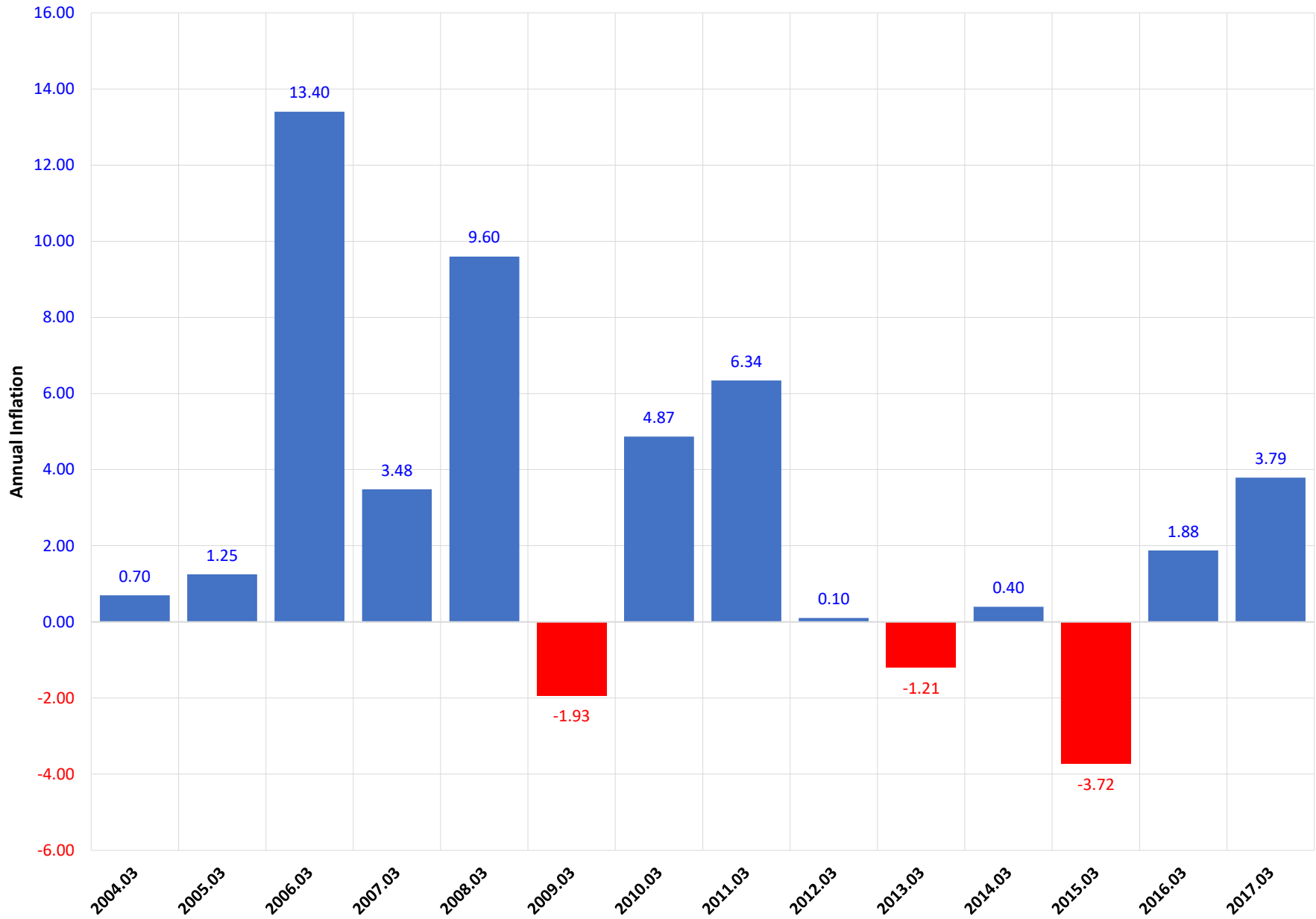


Chart 4: Annual Inflation Rate, By Group, Saipan, Q3 2017

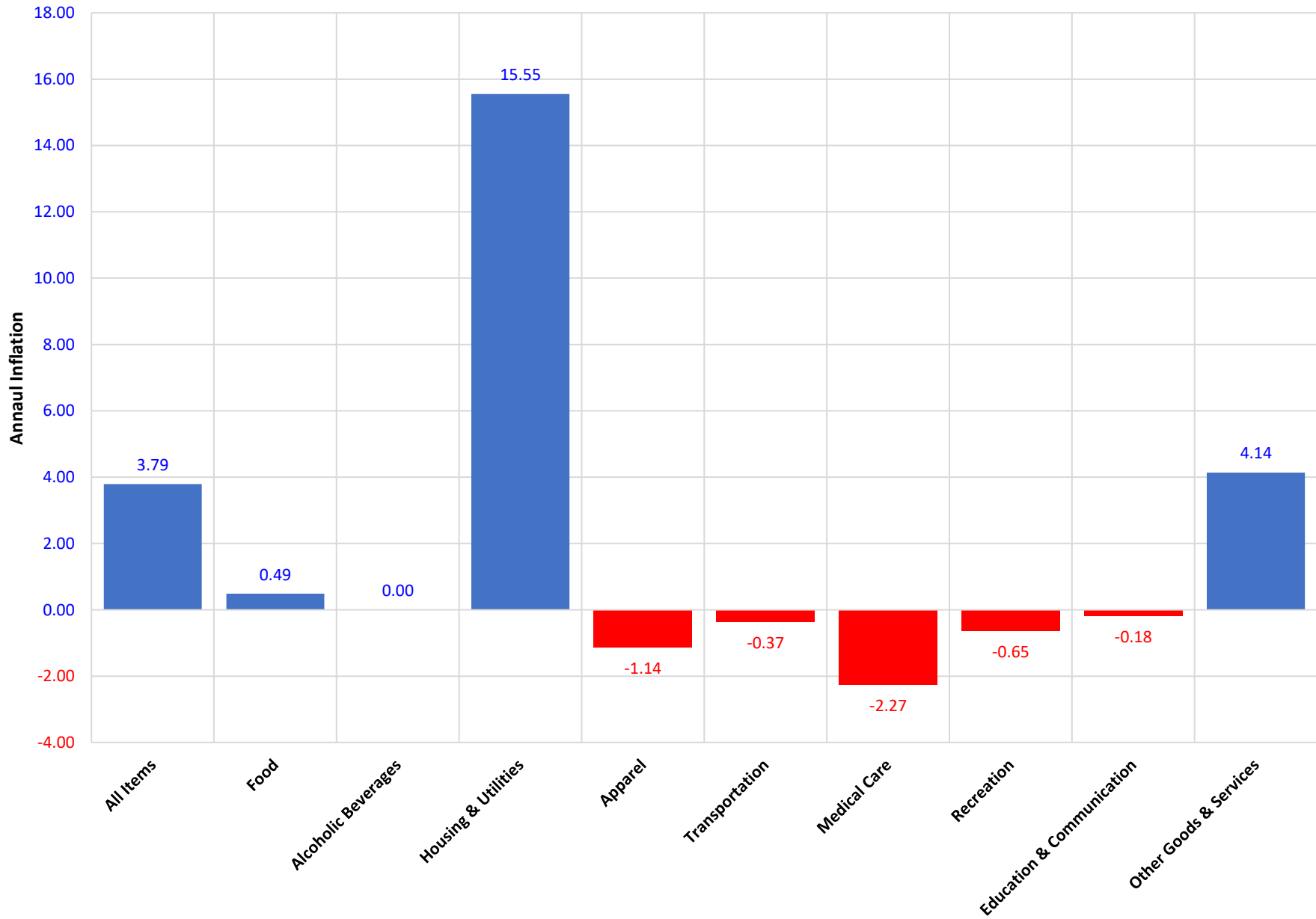


Chart 5: Consumer Price Index, All Items & 3 Largest Groups, Saipan, Q4 2008 to Q3 2017

