

**Table 1: Quarterly Inflation, by Group, Saipan: Q3 2015 - Q2 2019**  
2nd Quarter 2017 = 100

Group	Year and Quarter [YYYY.QQ]															
	2015.03	2015.04	2016.01	2016.02	2016.03	2016.04	2017.01	2017.02	2017.03	2017.04	2018.01	2018.02	2018.03	2018.04	2019.01	2019.02
All Items	-1.5	0.1	0.3	1.3	0.2	0.3	3.2	0.2	-0.3	-0.3	-1.7	0.9	-0.3	3.0	-0.7	-0.3
Food	-0.3	0.3	-0.4	0.5	-1.2	0.0	0.8	-0.1	-0.2	0.9	0.6	-0.1	0.4	0.7	-0.1	-0.9
Alcoholic Beverages	2.6	0.0	0.0	-3.1	0.9	0.0	0.0	0.0	0.0	0.0	0.0	0.0	0.0	0.8	-1.2	-0.2
Housing & Utilities	-3.2	0.1	-3.8	3.5	-0.4	0.9	12.6	0.5	-0.1	0.9	-1.3	-0.3	0.3	0.6	-0.3	0.3
Apparel	0.0	0.1	0.0	-0.2	-0.1	0.0	-2.6	2.5	-1.0	1.1	0.9	0.1	-0.5	-1.5	2.6	-0.1
Transportation	-2.7	0.0	-1.9	1.7	2.1	0.4	0.0	-0.7	0.0	-3.1	-6.1	3.6	-1.8	10.1	-3.0	0.0
Medical Care	0.0	0.0	0.3	0.0	0.0	0.0	0.1	0.0	-2.3	3.6	0.4	0.0	0.0	0.3	0.5	-3.4
Recreation	-0.1	0.0	44.4	0.0	0.2	-0.3	-0.4	0.0	0.0	-0.4	0.0	0.2	-2.3	-0.6	2.4	0.0
Education & Communication	0.1	0.0	7.0	0.0	0.0	0.0	0.0	0.1	-0.3	-0.3	1.6	-0.1	2.2	0.1	0.3	-1.0
Other Goods & Services	0.1	0.0	-0.1	0.1	0.3	0.0	1.2	2.5	0.3	3.4	0.7	0.2	0.9	2.5	-0.5	-0.1

**Table 2: Annual Inflation, by Group, Saipan: Q2 2004 - Q2 2019**  
2nd Quarter 2017 = 100

Group	Year and Quarter [YYYY.QQ]															
	2004.02	2005.02	2006.02	2007.02	2008.02	2009.02	2010.02	2011.02	2012.02	2013.02	2014.02	2015.02	2016.02	2017.02	2018.02	2019.02
All Items	1.0	0.7	2.4	14.6	10.9	-3.2	4.8	3.7	2.7	0.1	0.0	-2.9	0.1	3.9	-1.4	1.7
Food	3.8	3.5	1.2	6.3	6.1	9.5	1.0	5.7	1.1	0.3	4.0	4.3	0.1	-0.5	1.1	0.1
Alcoholic Beverages	-0.5	1.6	0.9	3.9	3.4	10.6	1.3	3.3	0.8	2.2	4.3	0.5	-0.5	0.9	0.0	-0.6
Housing & Utilities	-2.3	0.6	5.2	47.6	24.3	-16.5	6.4	-5.4	1.3	1.3	0.6	-9.4	-3.6	13.7	-0.9	0.8
Apparel	-0.4	-3.2	9.2	3.2	-0.7	-0.1	0.2	-0.9	0.3	-4.8	0.6	-0.2	-0.1	-0.3	1.1	0.5
Transportation	1.2	-0.2	0.6	0.0	3.4	4.8	10.2	9.9	0.9	-0.2	1.7	-5.6	-2.9	1.8	-5.8	4.8
Medical Care	0.0	0.0	6.3	1.1	7.1	1.6	-1.1	18.6	15.6	3.8	-10.1	0.2	0.3	0.1	1.5	-2.6
Recreation	2.2	-0.1	3.4	1.4	-0.8	2.7	-0.8	0.2	1.7	-0.8	2.0	-2.5	44.3	-0.4	-0.2	-0.6
Education & Communication	-0.2	-1.2	3.0	0.9	-0.1	-1.5	8.3	-0.9	-0.3	-9.3	-1.2	0.1	7.1	0.1	0.8	1.6
Other Goods & Services	8.3	0.0	0.0	0.0	0.0	9.3	2.8	7.7	0.8	0.1	0.2	15.9	0.0	4.1	4.7	2.8

**Table 3: Consumer Price Index, by Group, Saipan: Q1 2009 - Q2 2019**  
2nd Quarter 2017 = 100

Group	Year and Quarter [YYYY.QQ]															
	2009.01	2009.02	2009.03	2009.04	2010.01	2010.02	2010.03	2010.04	2011.01	2011.02	2011.03	2011.04	2012.01	2012.02	2012.03	2012.04
All Items	87.1	88.6	88.8	91.8	92.4	92.8	93.1	96.9	95.5	96.3	99.0	99.2	99.6	98.9	99.1	100.2
Food	84.4	85.6	87.7	87.4	86.1	86.5	86.1	87.3	89.1	91.4	92.6	92.3	92.2	92.4	92.4	92.2
Alcoholic Beverages	81.3	88.2	88.5	88.5	89.3	89.3	89.3	91.7	92.3	92.3	92.7	88.6	91.7	93.0	93.5	93.5
Housing & Utilities	95.5	96.9	94.2	103.0	102.0	103.1	103.2	104.2	97.3	97.6	98.8	99.3	99.4	98.9	98.1	99.8
Apparel	105.5	105.5	109.1	110.1	108.4	105.8	105.7	105.9	105.3	104.8	105.7	107.1	105.8	105.1	102.8	101.3
Transportation	83.7	86.5	87.7	90.2	94.6	95.3	97.3	103.2	103.6	104.7	107.5	107.6	109.4	105.7	107.6	109.8
Medical Care	78.5	78.5	76.0	76.1	77.6	77.7	76.9	92.2	92.1	92.1	104.4	104.4	104.3	106.5	107.5	109.3
Recreation	67.6	69.8	70.0	70.2	68.7	69.2	68.6	68.4	69.4	69.3	69.3	68.7	70.5	70.5	70.4	70.3
Education & Communication	97.2	97.1	105.5	105.9	105.2	105.2	104.9	104.5	104.2	104.2	104.6	105.2	105.1	103.9	104.5	104.9
Other Goods & Services	74.0	74.0	74.7	75.0	74.7	76.0	76.0	77.4	81.8	81.9	82.1	82.2	82.4	82.5	82.6	82.6

**Table 3: Consumer Price Index, by Group, Saipan: Q1 2009 - Q2 2019 (Continued)**  
**2nd Quarter 2017 = 100**

Group	Year and Quarter [YYYY.QQ]															
	2013.01	2013.02	2013.03	2013.04	2014.01	2014.02	2014.03	2014.04	2015.01	2015.02	2015.03	2015.04	2016.01	2016.02	2016.03	2016.04
All Items	99.1	99.0	97.9	97.7	98.2	99.0	98.3	98.8	95.3	96.1	94.7	94.7	95.0	96.2	96.4	96.7
Food	92.4	92.6	93.8	93.9	95.6	96.3	96.3	99.6	100.3	100.4	100.1	100.4	100.0	100.5	99.3	99.3
Alcoholic Beverages	95.1	95.1	97.0	97.0	97.8	99.2	99.2	99.6	99.6	99.6	102.2	102.2	102.2	99.1	100.0	100.0
Housing & Utilities	100.1	100.1	100.1	99.9	99.4	100.8	98.9	95.6	89.2	91.3	88.3	88.4	85.0	88.0	87.6	88.3
Apparel	100.9	100.0	99.5	99.5	100.5	100.6	98.9	99.2	100.4	100.4	100.3	100.4	100.4	100.3	100.2	100.2
Transportation	106.2	105.4	106.0	105.3	106.4	107.2	107.2	108.9	100.2	101.2	98.5	98.5	96.6	98.3	100.4	100.7
Medical Care	110.6	110.6	99.1	99.1	99.4	99.4	99.5	99.6	99.6	99.6	99.6	99.6	99.9	99.9	99.9	99.9
Recreation	70.0	70.0	69.7	69.6	69.9	71.4	69.9	69.9	69.8	69.6	69.5	69.5	100.4	100.4	100.7	100.4
Education & Communication	94.3	94.3	94.6	94.6	93.1	93.1	93.6	93.2	93.2	93.3	93.4	93.4	99.9	99.9	99.9	99.9
Other Goods & Services	82.6	82.6	82.8	82.7	82.8	82.8	82.8	92.0	96.0	96.0	96.0	96.0	95.9	96.0	96.3	96.4

Group	Year and Quarter [YYYY.QQ]									
	2017.01	2017.02	2017.03	2017.04	2018.01	2018.02	2018.03	2018.04	2019.01	2019.02
All Items	99.8	100.0	99.7	99.5	97.7	98.6	98.3	101.3	100.6	100.3
Food	100.1	100.0	99.8	100.6	101.2	101.1	101.5	102.2	102.1	101.2
Alcoholic Beverages	100.0	100.0	100.0	100.0	100.0	100.0	100.0	100.8	99.6	99.4
Housing & Utilities	99.5	100.0	99.9	100.7	99.4	99.1	99.4	100.0	99.6	99.9
Apparel	97.5	100.0	99.0	100.1	101.0	101.1	100.6	99.0	101.6	101.6
Transportation	100.7	100.0	100.0	96.9	90.9	94.2	92.4	101.7	98.7	98.7
Medical Care	100.0	100.0	97.7	101.1	101.5	101.5	101.5	101.9	102.4	98.9
Recreation	100.0	100.0	100.0	99.6	99.6	99.8	97.5	96.9	99.2	99.2
Education & Communication	99.9	100.0	99.7	99.4	100.9	100.8	103.0	103.2	103.5	102.5
Other Goods & Services	97.6	100.0	100.3	103.8	104.5	104.7	105.7	108.3	107.8	107.7

Chart 1: Quarterly Inflation Rate, All Items, Saipan, Q3 2015 to Q2 2019

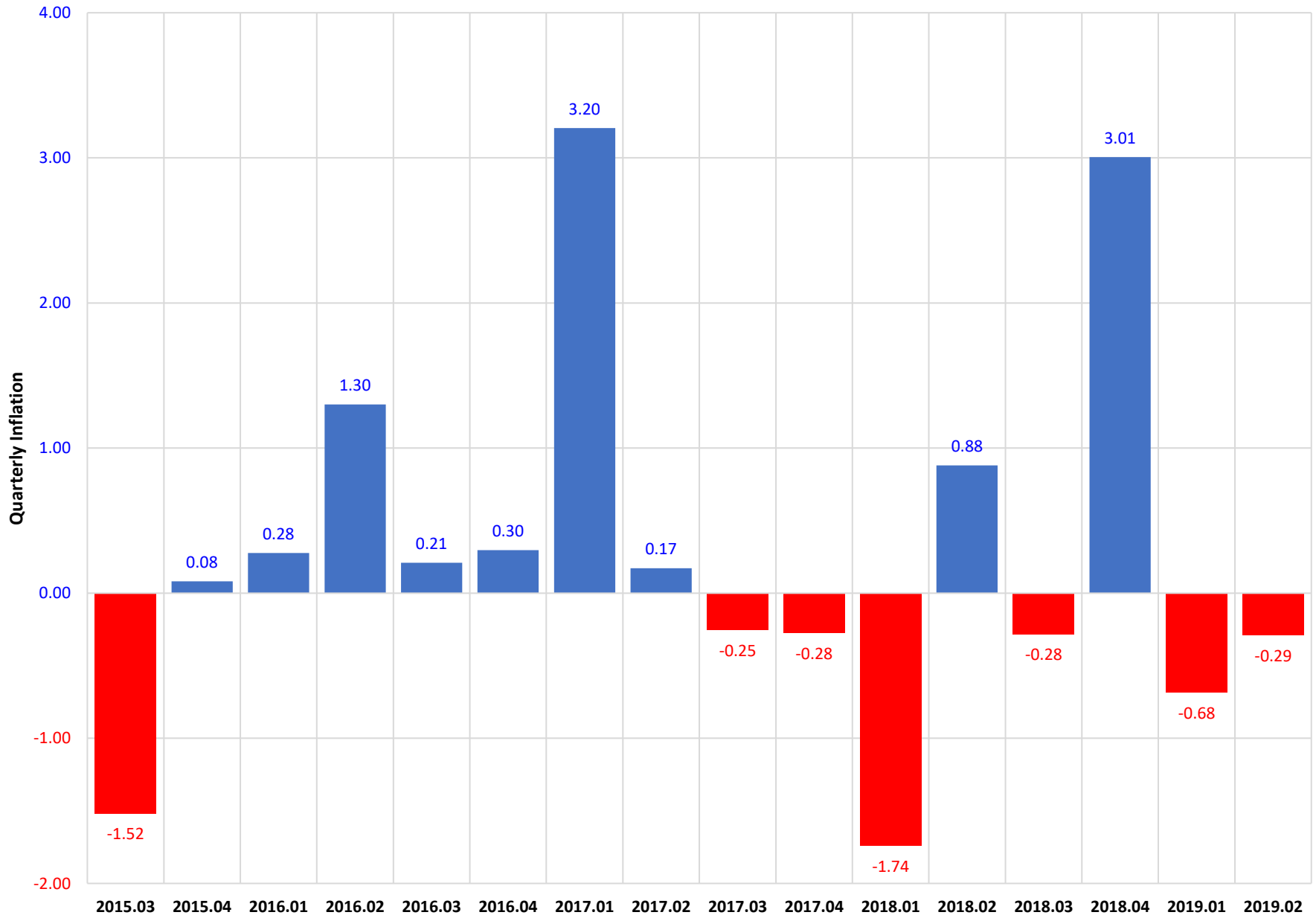


Chart 2: Quarterly Inflation Rate, By Group, Saipan, Q2 2019

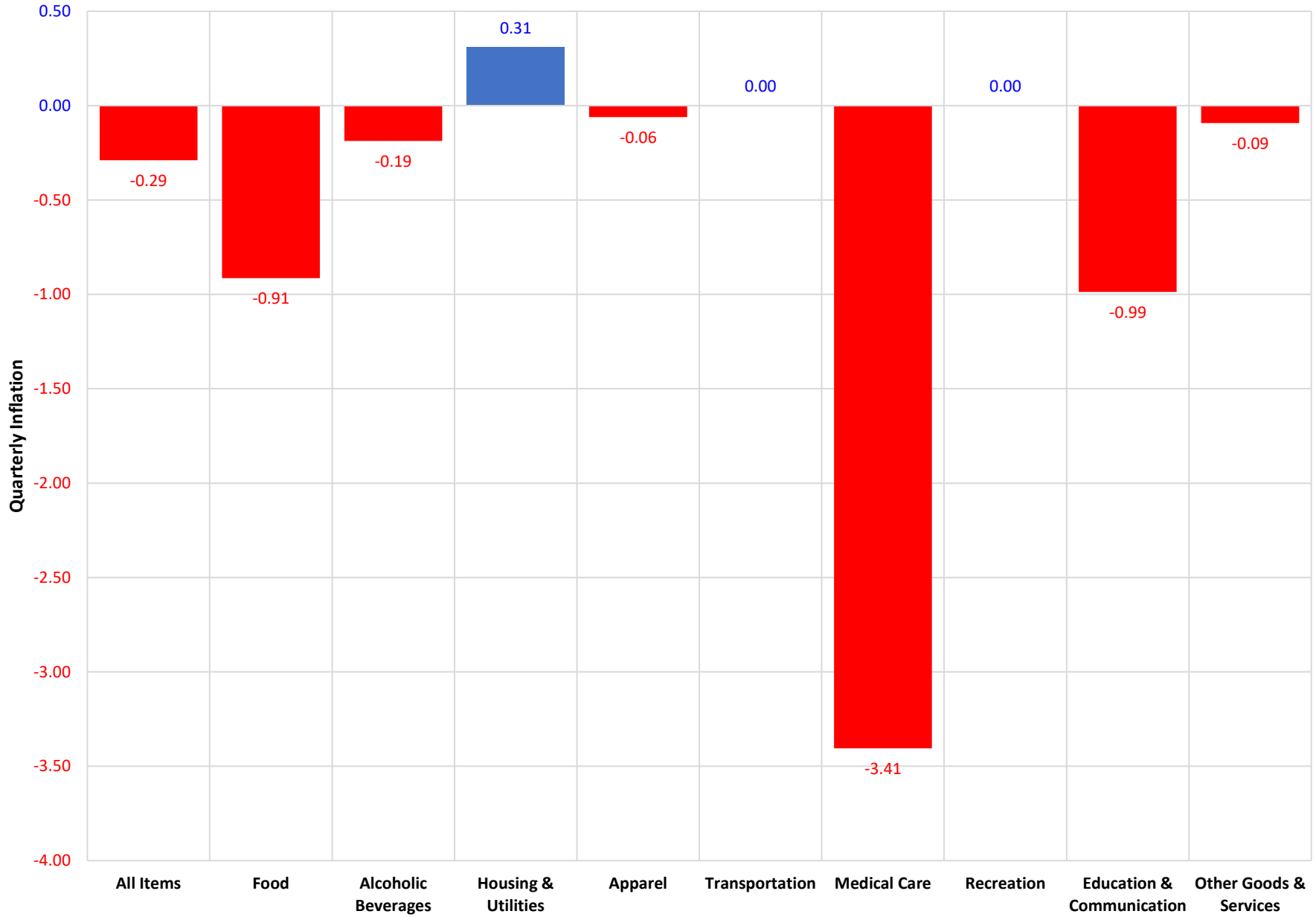


Chart 3: Annual Inflation Rate, All Items, Saipan, Q2 2004 to Q2 2019

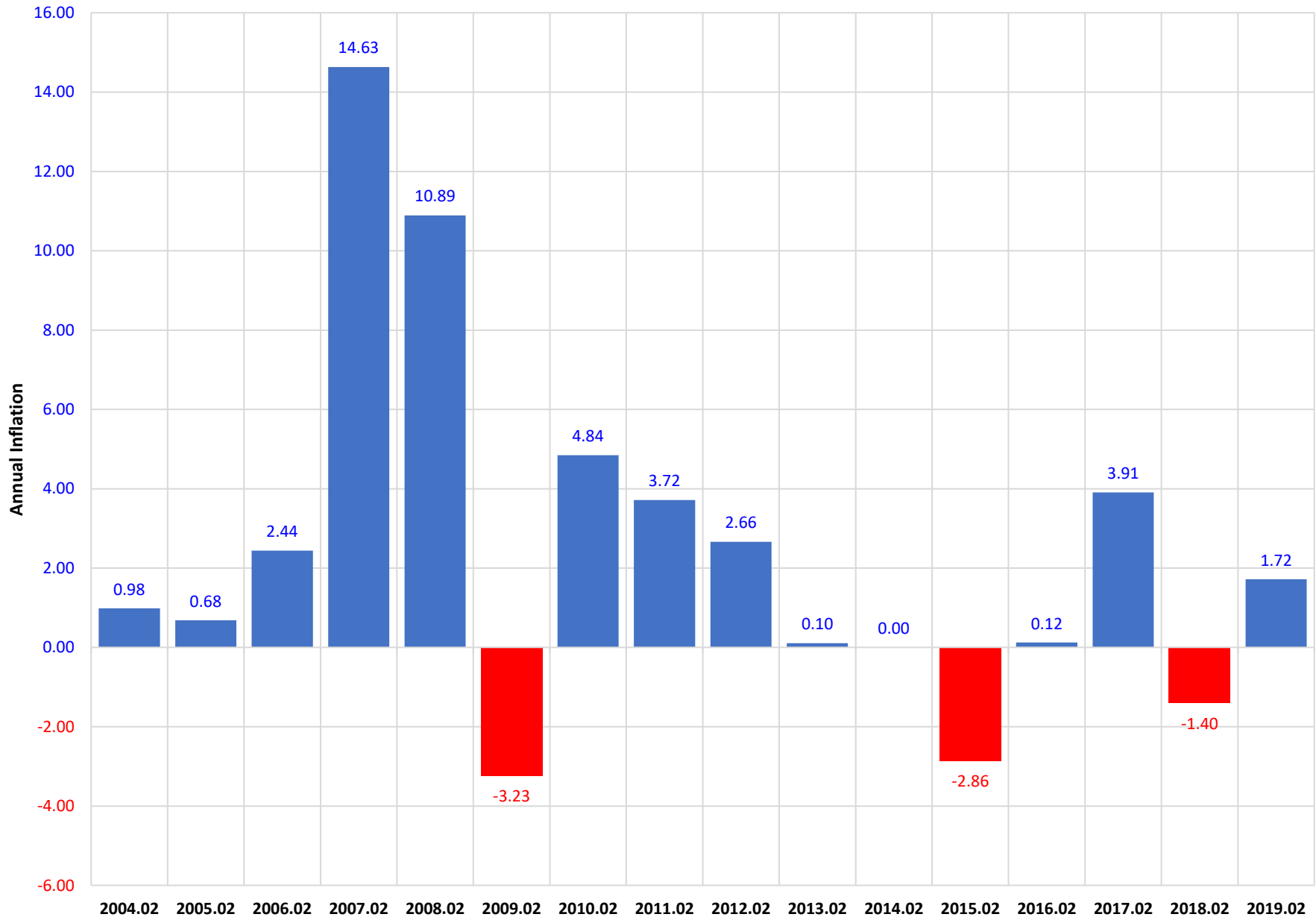


Chart 4: Annual Inflation Rate, By Group, Saipan, Q2 2019

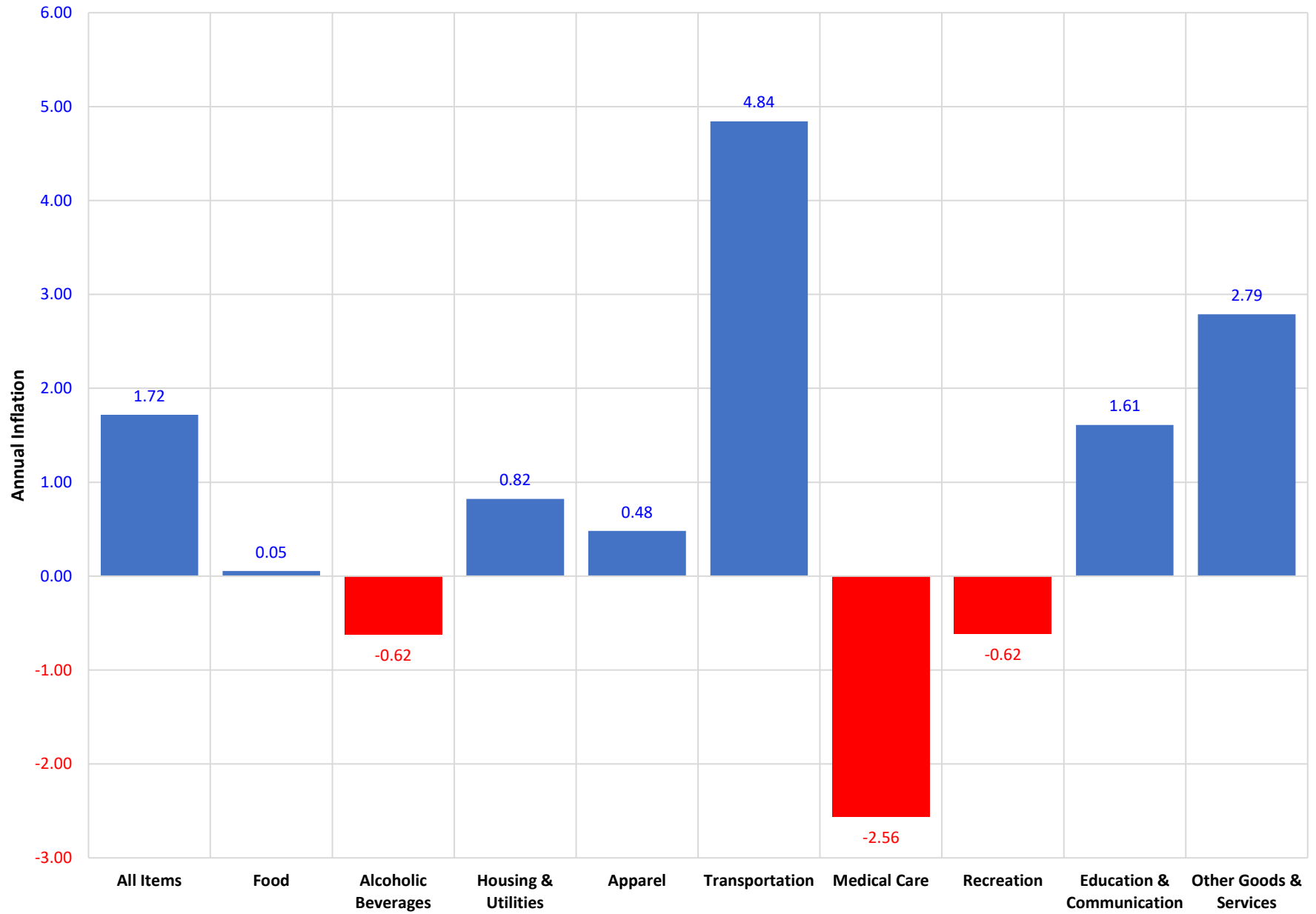


Chart 5: Consumer Price Index, All Items & 3 Largest Groups, Saipan, Q1 2010 to Q2 2019

