

**Table 1: Quarterly Inflation, by Group, Saipan: Q3 2016 - Q2 2020**  
2nd Quarter 2017 = 100

Group	Year and Quarter [YYYY.QQ]															
	2016.03	2016.04	2017.01	2017.02	2017.03	2017.04	2018.01	2018.02	2018.03	2018.04	2019.01	2019.02	2019.03	2019.04	2020.01	2020.02
All Items	0.2	0.3	3.2	0.2	-0.2	-0.3	-1.7	0.0	-0.3	2.9	-0.7	-0.3	0.1	-0.1	-0.9	0.0
Food	-1.2	0.0	0.8	-0.1	-0.2	0.9	0.6	0.0	0.4	0.7	-0.1	-0.9	-0.2	0.3	-0.1	-0.3
Alcoholic Beverages	0.9	0.0	0.0	0.0	0.0	0.0	0.0	0.0	0.0	0.8	-1.2	-0.2	0.3	0.0	0.0	0.0
Housing & Utilities	-0.4	0.9	12.6	0.5	-0.1	0.9	-1.3	0.0	0.3	0.6	-0.3	0.3	0.4	0.2	-0.5	-0.2
Apparel	-0.1	0.0	-2.6	2.5	-1.0	1.1	0.9	0.0	-0.5	-1.5	2.6	-0.1	0.5	-0.1	-0.2	0.0
Transportation	2.1	0.4	0.0	-0.7	0.0	-3.1	-6.1	0.0	-1.8	10.0	-3.0	0.0	-0.1	0.0	-2.3	0.2
Medical Care	0.0	0.0	0.1	0.0	-2.0	3.0	0.3	0.0	0.0	0.3	0.5	-2.8	-0.2	0.0	-0.4	0.6
Recreation	0.2	-0.3	-0.4	0.0	0.0	-0.4	0.0	0.0	-2.3	-0.6	2.4	0.0	-1.4	-8.4	1.0	0.0
Education & Communication	0.0	0.0	0.0	0.1	-0.3	-0.3	1.6	0.0	2.2	0.1	0.3	-1.0	0.0	-2.4	-0.9	-0.5
Other Goods & Services	0.3	0.0	1.2	2.5	0.3	3.4	0.7	0.0	0.9	2.5	-0.5	-0.1	1.0	0.3	-0.3	2.6

**Table 2: Annual Inflation, by Group, Saipan: Q2 2004 - Q2 2020**  
2nd Quarter 2017 = 100

Group	Year and Quarter [YYYY.QQ]															
	2005.02	2006.02	2007.02	2008.02	2009.02	2010.02	2011.02	2012.02	2013.02	2014.02	2015.02	2016.02	2017.02	2018.02	2019.02	2020.02
All Items	0.7	2.4	14.6	10.9	-3.2	4.8	3.7	2.7	0.1	0.0	-2.9	0.1	3.9	-2.3	1.7	-1.0
Food	3.5	1.2	6.3	6.1	9.5	1.0	5.7	1.1	0.3	4.0	4.3	0.1	-0.5	1.2	0.1	-0.3
Alcoholic Beverages	1.6	0.9	3.9	3.4	10.6	1.3	3.3	0.8	2.2	4.3	0.5	-0.5	0.9	0.0	-0.6	0.3
Housing & Utilities	0.6	5.2	47.6	24.3	-16.5	6.4	-5.4	1.3	1.3	0.6	-9.4	-3.6	13.7	-0.6	0.8	-0.2
Apparel	-3.2	9.2	3.2	-0.7	-0.1	0.2	-0.9	0.3	-4.8	0.6	-0.2	-0.1	-0.3	1.0	0.5	0.2
Transportation	-0.2	0.6	0.0	3.4	4.8	10.2	9.9	0.9	-0.2	1.7	-5.6	-2.9	1.8	-9.1	4.8	-2.1
Medical Care	0.0	6.3	1.1	7.1	1.6	-1.1	18.6	15.6	3.8	-10.1	0.2	0.3	0.1	1.3	-2.0	0.0
Recreation	-0.1	3.4	1.4	-0.8	2.7	-0.8	0.2	1.7	-0.8	2.0	-2.5	44.3	-0.4	-0.4	-0.6	-8.8
Education & Communication	-1.2	3.0	0.9	-0.1	-1.5	8.3	-0.9	-0.3	-9.3	-1.2	0.1	7.1	0.1	0.9	1.6	-3.7
Other Goods & Services	0.0	0.0	0.0	0.0	9.3	2.8	7.7	0.8	0.1	0.2	15.9	0.0	4.1	4.5	2.8	3.5

**Table 3: Consumer Price Index, by Group, Saipan: Q1 2009 - Q2 2020**  
2nd Quarter 2017 = 100

Group	Year and Quarter [YYYY.QQ]															
	2009.01	2009.02	2009.03	2009.04	2010.01	2010.02	2010.03	2010.04	2011.01	2011.02	2011.03	2011.04	2012.01	2012.02	2012.03	2012.04
All Items	87.1	88.6	88.8	91.8	92.4	92.8	93.1	96.9	95.5	96.3	99.0	99.2	99.6	98.9	99.1	100.2
Food	84.4	85.6	87.7	87.4	86.1	86.5	86.1	87.3	89.1	91.4	92.6	92.3	92.2	92.4	92.4	92.2
Alcoholic Beverages	81.3	88.2	88.5	88.5	89.3	89.3	89.3	91.7	92.3	92.3	92.7	88.6	91.7	93.0	93.5	93.5
Housing & Utilities	95.5	96.9	94.2	103.0	102.0	103.1	103.2	104.2	97.3	97.6	98.8	99.3	99.4	98.9	98.1	99.8
Apparel	105.5	105.5	109.1	110.1	108.4	105.8	105.7	105.9	105.3	104.8	105.7	107.1	105.8	105.1	102.8	101.3
Transportation	83.7	86.5	87.7	90.2	94.6	95.3	97.3	103.2	103.6	104.7	107.5	107.6	109.4	105.7	107.6	109.8
Medical Care	78.5	78.5	76.0	76.1	77.6	77.7	76.9	92.2	92.1	92.1	104.4	104.4	104.3	106.5	107.5	109.3
Recreation	67.6	69.8	70.0	70.2	68.7	69.2	68.6	68.4	69.4	69.3	69.3	68.7	70.5	70.5	70.4	70.3
Education & Communication	97.2	97.1	105.5	105.9	105.2	105.2	104.9	104.5	104.2	104.2	104.6	105.2	105.1	103.9	104.5	104.9
Other Goods & Services	74.0	74.0	74.7	75.0	74.7	76.0	76.0	77.4	81.8	81.9	82.1	82.2	82.4	82.5	82.6	82.6

**Table 3: Consumer Price Index, by Group, Saipan: Q1 2009 - Q2 2020 (Continued)**  
**2nd Quarter 2017 = 100**

Group	Year and Quarter [YYYY.QQ]															
	2013.01	2013.02	2013.03	2013.04	2014.01	2014.02	2014.03	2014.04	2015.01	2015.02	2015.03	2015.04	2016.01	2016.02	2016.03	2016.04
<b>All Items</b>	99.1	99.0	97.9	97.7	98.2	99.0	98.3	98.8	95.3	96.1	94.7	94.7	95.0	96.2	96.4	96.7
<b>Food</b>	92.4	92.6	93.8	93.9	95.6	96.3	96.3	99.6	100.3	100.4	100.1	100.4	100.0	100.5	99.3	99.3
<b>Alcoholic Beverages</b>	95.1	95.1	97.0	97.0	97.8	99.2	99.2	99.6	99.6	99.6	102.2	102.2	102.2	99.1	100.0	100.0
<b>Housing &amp; Utilities</b>	100.1	100.1	100.1	99.9	99.4	100.8	98.9	95.6	89.2	91.3	88.3	88.4	85.0	88.0	87.6	88.3
<b>Apparel</b>	100.9	100.0	99.5	99.5	100.5	100.6	98.9	99.2	100.4	100.4	100.3	100.4	100.4	100.3	100.2	100.2
<b>Transportation</b>	106.2	105.4	106.0	105.3	106.4	107.2	107.2	108.9	100.2	101.2	98.5	98.5	96.6	98.3	100.4	100.7
<b>Medical Care</b>	110.6	110.6	99.1	99.1	99.4	99.4	99.5	99.6	99.6	99.6	99.6	99.6	99.9	99.9	99.9	99.9
<b>Recreation</b>	70.0	70.0	69.7	69.6	69.9	71.4	69.9	69.9	69.8	69.6	69.5	69.5	100.4	100.4	100.7	100.4
<b>Education &amp; Communication</b>	94.3	94.3	94.6	94.6	93.1	93.1	93.6	93.2	93.2	93.3	93.4	93.4	99.9	99.9	99.9	99.9
<b>Other Goods &amp; Services</b>	82.6	82.6	82.8	82.7	82.8	82.8	82.8	92.0	96.0	96.0	96.0	96.0	95.9	96.0	96.3	96.4

Group	Year and Quarter [YYYY.QQ]															
	2017.01	2017.02	2017.03	2017.04	2018.01	2018.02	2018.03	2018.04	2019.01	2019.02	2019.03	2019.04	2020.01	2020.02	2020.03	2020.04
<b>All Items</b>	99.8	100.0	99.8	99.5	97.7	97.7	97.5	100.3	99.7	99.4	99.4	99.3	98.4	98.4		
<b>Food</b>	100.1	100.0	99.8	100.6	101.2	101.2	101.6	102.3	102.2	101.3	101.0	101.4	101.3	101.0		
<b>Alcoholic Beverages</b>	100.0	100.0	100.0	100.0	100.0	100.0	100.0	100.8	99.6	99.4	99.6	99.6	99.6	99.6		
<b>Housing &amp; Utilities</b>	99.5	100.0	99.9	100.7	99.4	99.4	99.7	100.2	99.9	100.2	100.6	100.8	100.3	100.0		
<b>Apparel</b>	97.5	100.0	99.0	100.1	101.0	101.0	100.5	99.0	101.6	101.5	102.0	101.9	101.7	101.7		
<b>Transportation</b>	100.7	100.0	100.0	96.9	90.9	90.9	89.3	98.2	95.3	95.3	95.2	95.2	93.0	93.2		
<b>Medical Care</b>	100.0	100.0	98.0	101.0	101.3	101.3	101.3	101.6	102.1	99.3	99.1	99.1	98.7	99.3		
<b>Recreation</b>	100.0	100.0	100.0	99.6	99.6	99.6	97.3	96.7	99.0	99.0	97.5	89.4	90.3	90.3		
<b>Education &amp; Communication</b>	99.9	100.0	99.7	99.4	100.9	100.9	103.1	103.3	103.6	102.6	102.6	100.2	99.3	98.8		
<b>Other Goods &amp; Services</b>	97.6	100.0	100.3	103.8	104.5	104.5	105.4	108.1	107.5	107.4	108.5	108.8	108.5	111.2		

Chart 1: Quarterly Inflation Rate, All Items, Saipan, Q3 2016 to Q2 2020

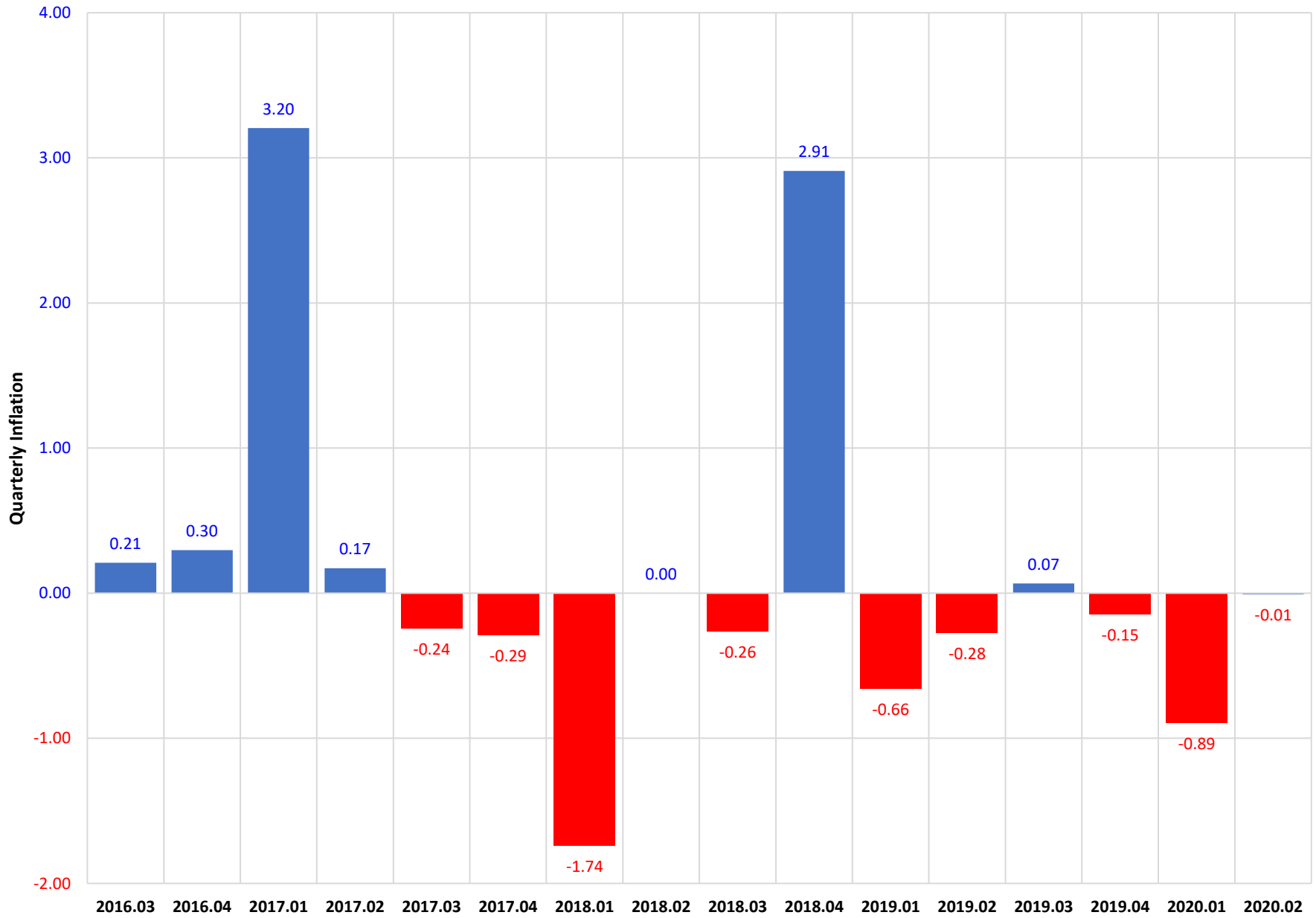


Chart 2: Quarterly Inflation Rate, By Group, Saipan, Q2 2020

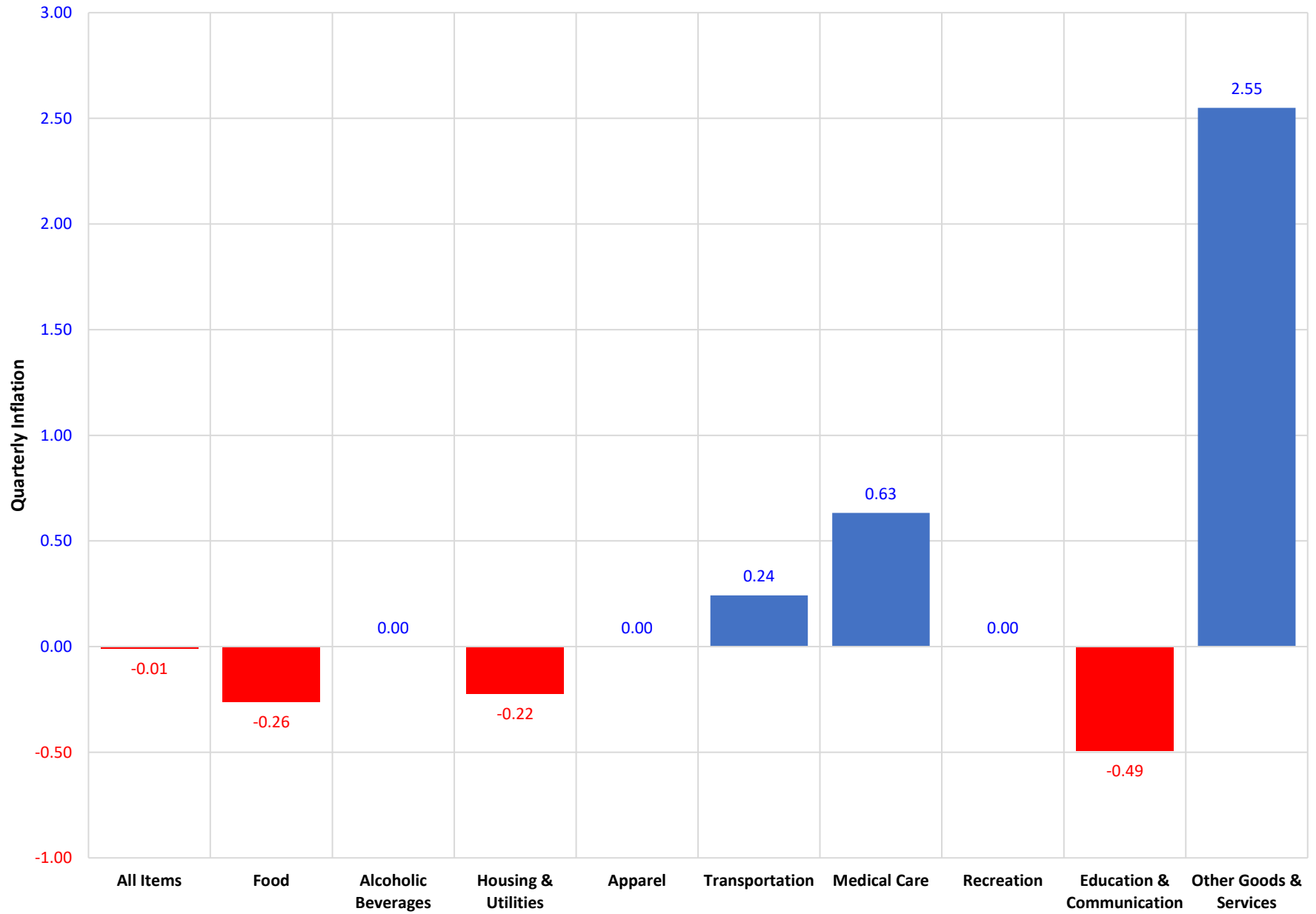


Chart 3: Annual Inflation Rate, All Items, Saipan, Q2 2005 to Q2 2020

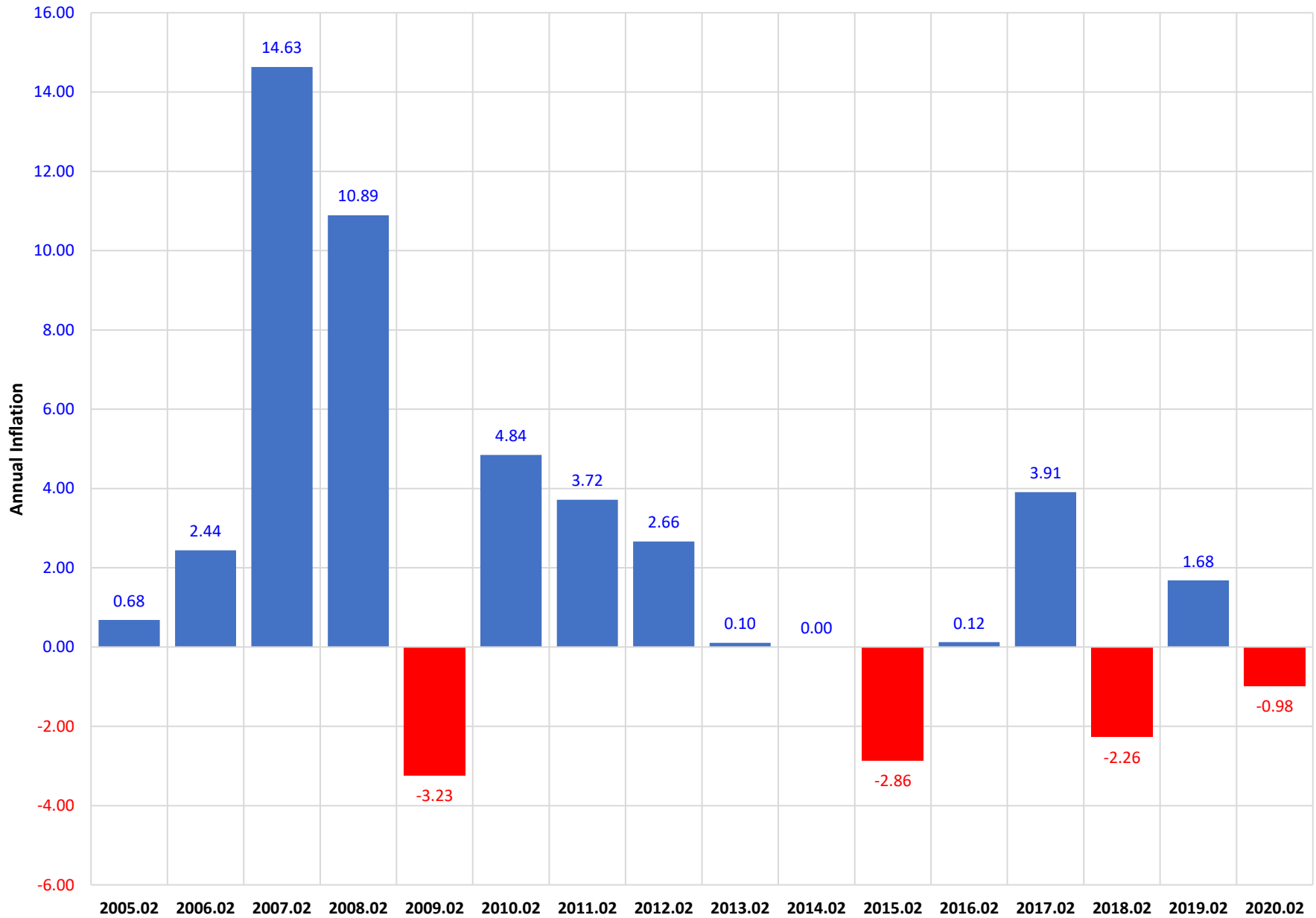


Chart 4: Annual Inflation Rate, By Group, Saipan, Q2 2020

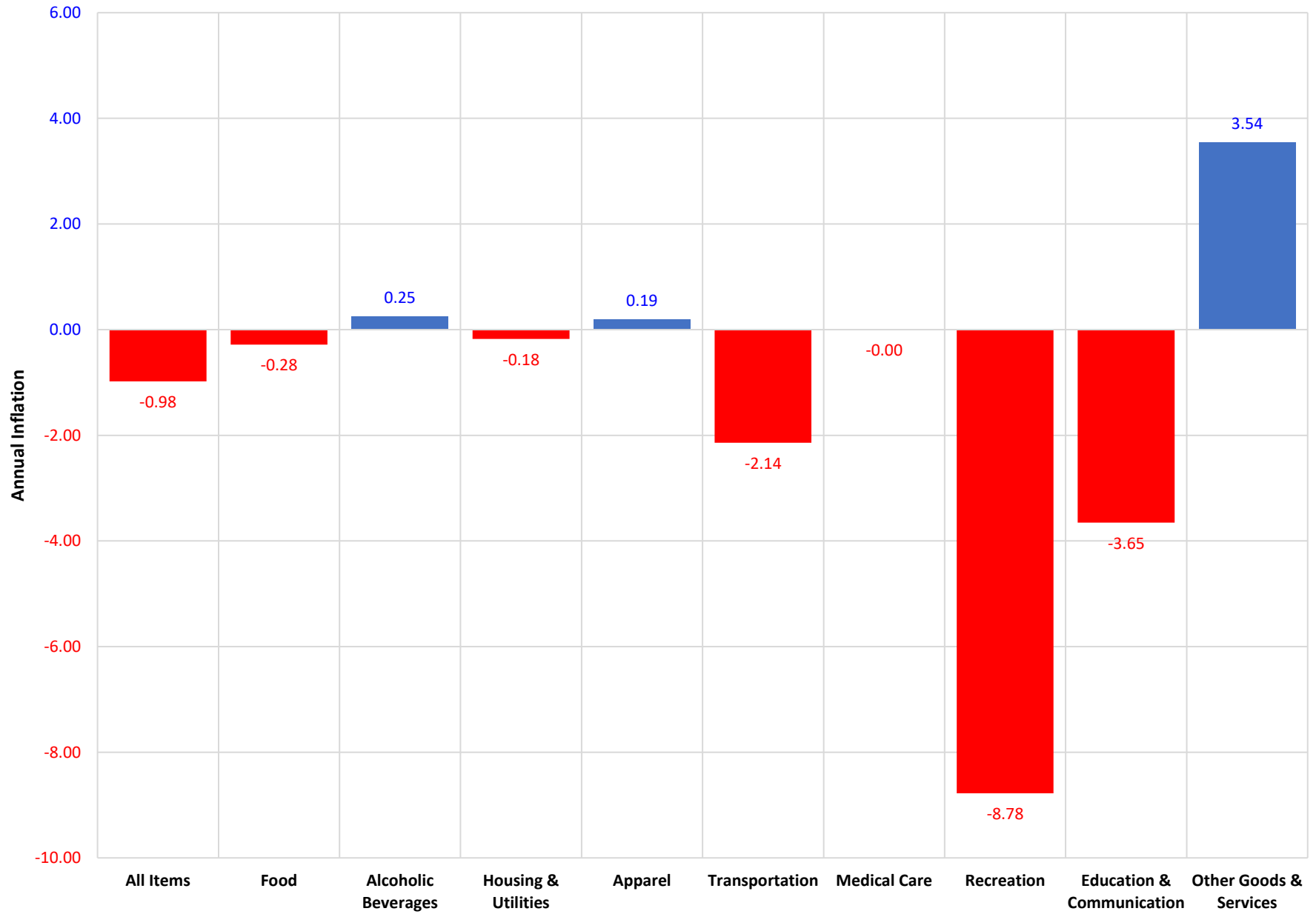


Chart 5: Consumer Price Index, All Items & 3 Largest Groups, Saipan, Q3 2010 to Q2 2020

