

**Table 1: Quarterly Inflation, by Group, Tinian: Q2 2016 - Q1 2020**  
2nd Quarter 2017 = 100

Group	Year and Quarter [YYYY.QQ]															
	2016.02	2016.03	2016.04	2017.01	2017.02	2017.03	2017.04	2018.01	2018.02	2018.03	2018.04	2019.01	2019.02	2019.03	2019.04	2020.01
All Items	1.5	0.2	-0.2	0.7	0.8	-0.4	0.6	-0.1	0.5	0.7	0.4	0.1	0.2	0.2	0.0	-0.3
Food	-0.1	0.8	0.1	0.3	-0.3	-0.5	1.0	0.0	0.1	0.3	1.2	0.6	0.2	-0.6	0.1	0.1
Alcoholic Beverages	0.0	-0.1	0.1	0.0	0.0	0.0	0.0	0.0	0.0	0.0	0.0	0.0	0.0	0.0	0.0	0.0
Housing & Utilities	5.4	-0.6	1.3	2.6	-1.0	0.0	1.1	-1.2	0.0	0.5	1.0	-1.0	0.2	-0.2	0.1	-0.8
Apparel	0.0	0.0	0.0	-5.0	4.4	-1.2	-0.7	0.2	0.0	0.0	-4.2	5.6	0.9	2.0	0.0	-0.6
Transportation	0.0	2.2	0.5	2.1	0.0	0.0	0.0	0.3	4.4	1.4	2.4	-2.4	0.0	-0.6	0.0	0.0
Medical Care	0.0	0.0	0.0	0.0	0.0	0.0	0.0	0.5	0.0	0.0	0.0	0.5	0.1	2.9	0.0	0.0
Recreation	0.0	0.2	-0.3	0.8	18.0	0.0	-0.7	0.0	0.0	-0.9	-0.3	0.0	0.0	-2.5	-0.7	0.3
Education & Communicatio	0.0	0.0	0.0	0.0	0.7	-1.0	0.9	1.0	-0.3	3.6	-0.5	-0.4	0.0	1.7	0.0	-0.9
Other Goods & Services	0.0	0.8	-7.1	0.3	0.0	0.1	-0.1	0.0	0.0	0.0	0.0	0.0	0.0	0.0	0.0	0.0

**Table 2: Annual Inflation, by Group, Tinian: Q1 2011 - Q1 2020**  
2nd Quarter 2017 = 100

Group	Year and Quarter [YYYY.QQ]									
	2011.01	2012.01	2013.01	2014.01	2015.01	2016.01	2017.01	2018.01	2019.01	2020.01
All Items	5.4	6.8	3.4	-1.5	-3.1	-1.8	2.2	0.8	1.8	0.1
Food	-3.7	4.1	1.3	2.4	7.3	1.6	1.0	0.2	2.2	-0.2
Alcoholic Beverages	2.0	0.3	3.9	2.1	2.2	0.0	0.0	0.0	0.1	0.0
Housing & Utilities	11.8	10.0	2.7	-1.9	-14.4	-7.5	8.8	-1.1	0.5	-0.6
Apparel	-4.9	-0.8	-5.3	-0.2	4.5	-0.2	-5.0	2.6	1.2	2.3
Transportation	4.9	8.6	3.9	0.5	-7.8	-5.5	4.9	0.3	5.7	-0.7
Medical Care	19.5	12.3	15.6	-9.2	-0.7	0.0	0.0	0.5	0.5	3.0
Recreation	-1.5	11.2	-1.7	0.0	0.7	13.4	0.7	17.2	-1.2	-2.8
Education & Communicatio	-0.2	0.5	-0.3	0.2	-2.3	0.1	0.0	1.5	2.3	0.8
Other Goods & Services	5.1	0.6	4.0	-0.9	11.1	0.0	-6.1	0.0	0.0	0.0

**Table 3: Consumer Price Index, by Group, Tinian: Q1 2010 - Q1 2020**  
2nd Quarter 2017 = 100

Group	Year and Quarter [YYYY.QQ]															
	2010.01	2010.02	2010.03	2010.04	2011.01	2011.02	2011.03	2011.04	2012.01	2012.02	2012.03	2012.04	2013.01	2013.02	2013.03	2013.04
All Items	89.1	90.3	90.0	93.0	93.9	94.4	97.7	98.0	100.2	100.5	100.2	103.3	103.6	103.7	102.3	102.4
Food	87.5	86.6	86.4	85.3	84.3	84.3	85.4	87.2	87.8	88.6	88.4	88.8	88.9	90.6	90.7	90.8
Alcoholic Beverages	90.1	92.1	92.1	90.2	92.0	92.0	92.1	92.2	92.2	94.9	94.0	96.0	95.8	95.8	96.1	96.1
Housing & Utilities	94.7	99.6	98.7	103.6	105.8	105.8	109.8	108.7	116.4	115.6	115.1	118.1	119.5	119.0	118.7	119.0
Apparel	108.4	104.1	104.3	104.0	103.1	102.3	102.6	102.4	102.3	101.4	99.5	97.8	96.9	95.1	94.5	94.5
Transportation	92.0	93.0	93.7	93.3	96.5	104.4	106.1	105.4	104.8	108.0	109.8	109.4	108.9	108.9	109.4	109.4
Medical Care	71.5	71.5	71.5	85.5	85.5	85.5	96.6	98.0	96.0	96.0	96.0	110.6	111.0	111.0	100.8	100.8
Recreation	68.4	68.2	68.1	67.8	67.4	67.2	72.1	72.1	74.9	74.5	73.6	73.3	73.7	75.3	74.7	74.7
Education & Communicatio	101.3	101.8	101.5	100.9	101.2	101.0	101.0	101.0	101.6	101.7	101.3	104.7	101.4	101.7	102.0	102.3
Other Goods & Services	87.9	89.3	89.3	90.3	92.4	92.4	92.7	93.3	93.0	95.0	94.5	95.1	96.7	95.9	95.6	95.6

**Table 3: Consumer Price Index, by Group, Tinian: Q1 2010 - Q1 2020 (Continued)**  
**2nd Quarter 2017 = 100**

Group	Year and Quarter [YYYY.QQ]															
	2014.01	2014.02	2014.03	2014.04	2015.01	2015.02	2015.03	2015.04	2016.01	2016.02	2016.03	2016.04	2017.01	2017.02	2017.03	2017.04
All Items	102.1	103.1	103.7	102.3	98.9	100.2	98.3	98.1	97.1	98.5	98.8	98.6	99.2	100.0	99.6	100.2
Food	91.1	92.2	96.0	96.2	97.8	98.4	98.5	98.5	99.4	99.3	100.0	100.1	100.3	100.0	99.5	100.5
Alcoholic Beverages	97.8	100.0	100.0	100.0	100.0	100.0	100.0	100.0	100.0	100.0	99.9	100.0	100.0	100.0	100.0	100.0
Housing & Utilities	117.3	119.6	117.7	111.8	100.4	104.2	98.7	98.2	92.9	97.9	97.3	98.5	101.1	100.0	100.0	101.1
Apparel	96.6	96.6	98.6	98.7	101.0	101.1	100.8	101.0	100.8	100.8	100.8	100.8	95.8	100.0	98.8	98.1
Transportation	109.4	109.4	112.4	106.5	100.9	102.3	98.3	98.1	95.3	95.3	97.4	97.9	100.0	100.0	100.0	100.0
Medical Care	100.7	100.7	100.7	100.7	100.0	100.0	100.0	100.0	100.0	100.0	100.0	100.0	100.0	100.0	100.0	100.0
Recreation	73.7	74.0	73.9	73.9	74.2	73.4	73.3	73.3	84.1	84.1	84.3	84.0	84.7	100.0	100.0	99.3
Education & Communicatio	101.6	101.6	101.6	101.3	99.3	99.3	99.3	99.3	99.3	99.3	99.3	99.3	99.3	100.0	99.0	99.8
Other Goods & Services	95.8	96.1	96.5	106.1	106.5	106.6	106.5	106.0	106.5	106.5	107.4	99.7	100.0	100.0	100.1	99.9

Group	Year and Quarter [YYYY.QQ]											
	2018.01	2018.02	2018.03	2018.04	2019.01	2019.02	2019.03	2019.04	2020.01	2020.02	2020.03	2020.04
All Items	100.1	100.6	101.3	101.7	101.9	102.1	102.3	102.3	102.0			
Food	100.5	100.6	100.9	102.1	102.7	102.9	102.3	102.4	102.5			
Alcoholic Beverages	100.0	100.0	100.0	100.0	100.0	100.0	100.0	100.0	100.0			
Housing & Utilities	99.9	99.9	100.4	101.5	100.4	100.7	100.5	100.6	99.8			
Apparel	98.3	98.3	98.3	94.2	99.5	100.4	102.4	102.4	101.8			
Transportation	100.3	104.7	106.2	108.7	106.1	106.1	105.4	105.4	105.4			
Medical Care	100.5	100.5	100.5	100.5	101.0	101.1	104.1	104.1	104.1			
Recreation	99.3	99.3	98.4	98.1	98.1	98.1	95.7	95.0	95.4			
Education & Communicatio	100.8	100.4	104.0	103.5	103.1	103.2	104.9	104.9	104.0			
Other Goods & Services	99.9	99.9	99.9	99.9	99.9	99.9	99.9	99.9	99.9			

Chart 1: Quarterly Inflation, All Item, Tinian, Q2 2016 to Q1 2020

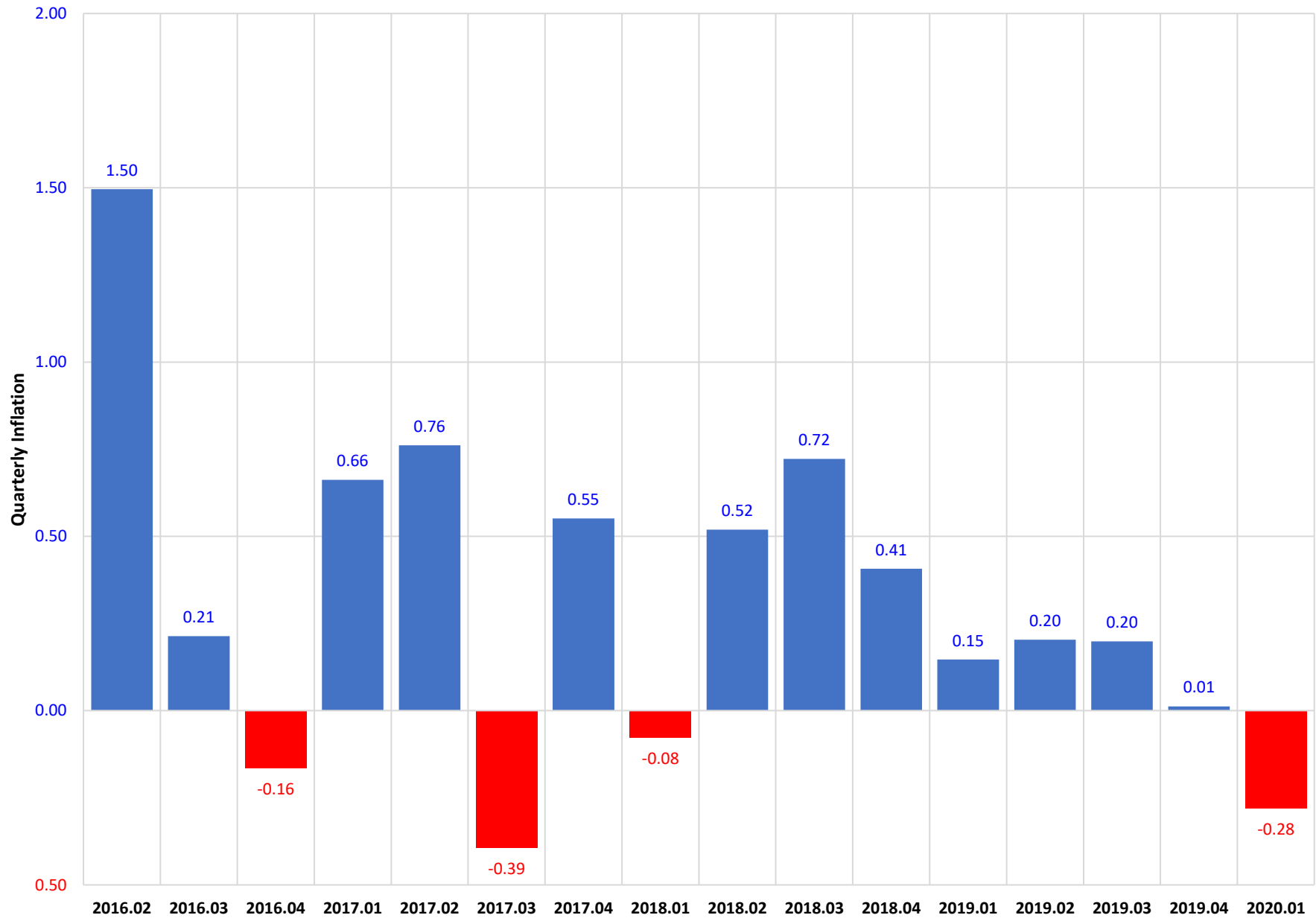


Chart 2: Quarterly Inflation Rate, By Group, Tinian, Q1 2020

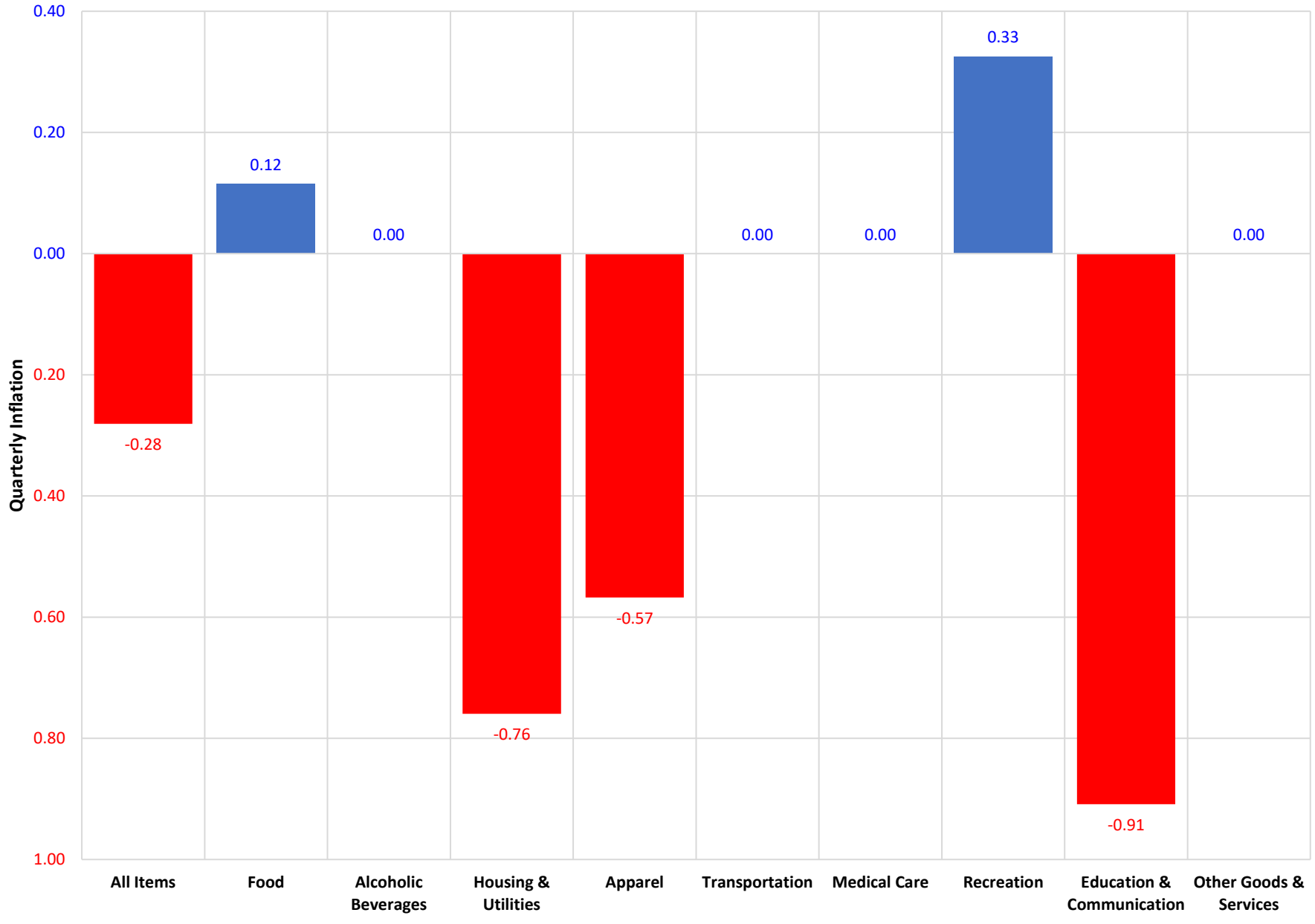


Chart 3: Annual Inflation Rate, All Items, Tinian, Q1 2011 to Q1 2020

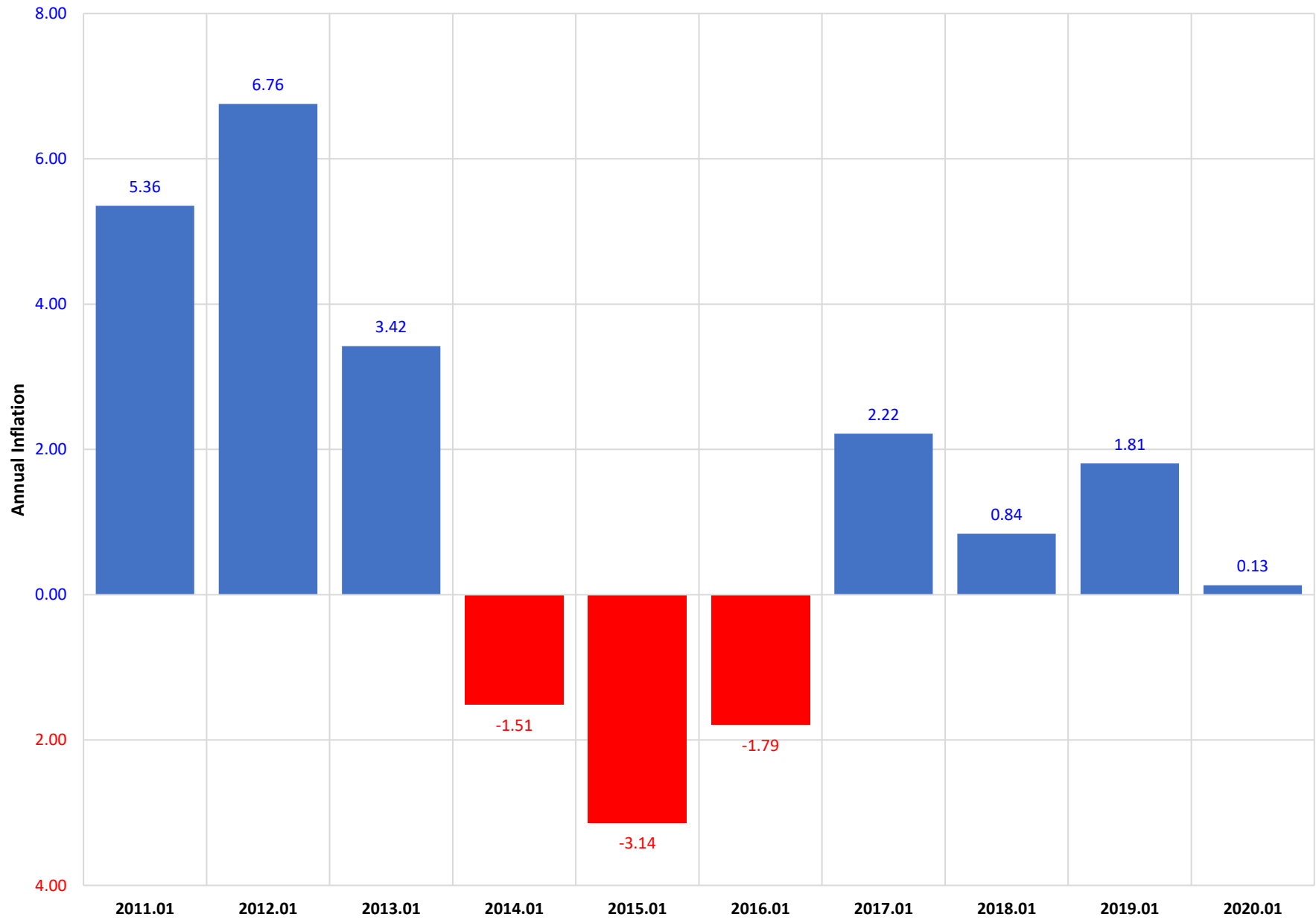


Chart 4: Annual Inflation Rate, By Group, Tinian, Q1 2020

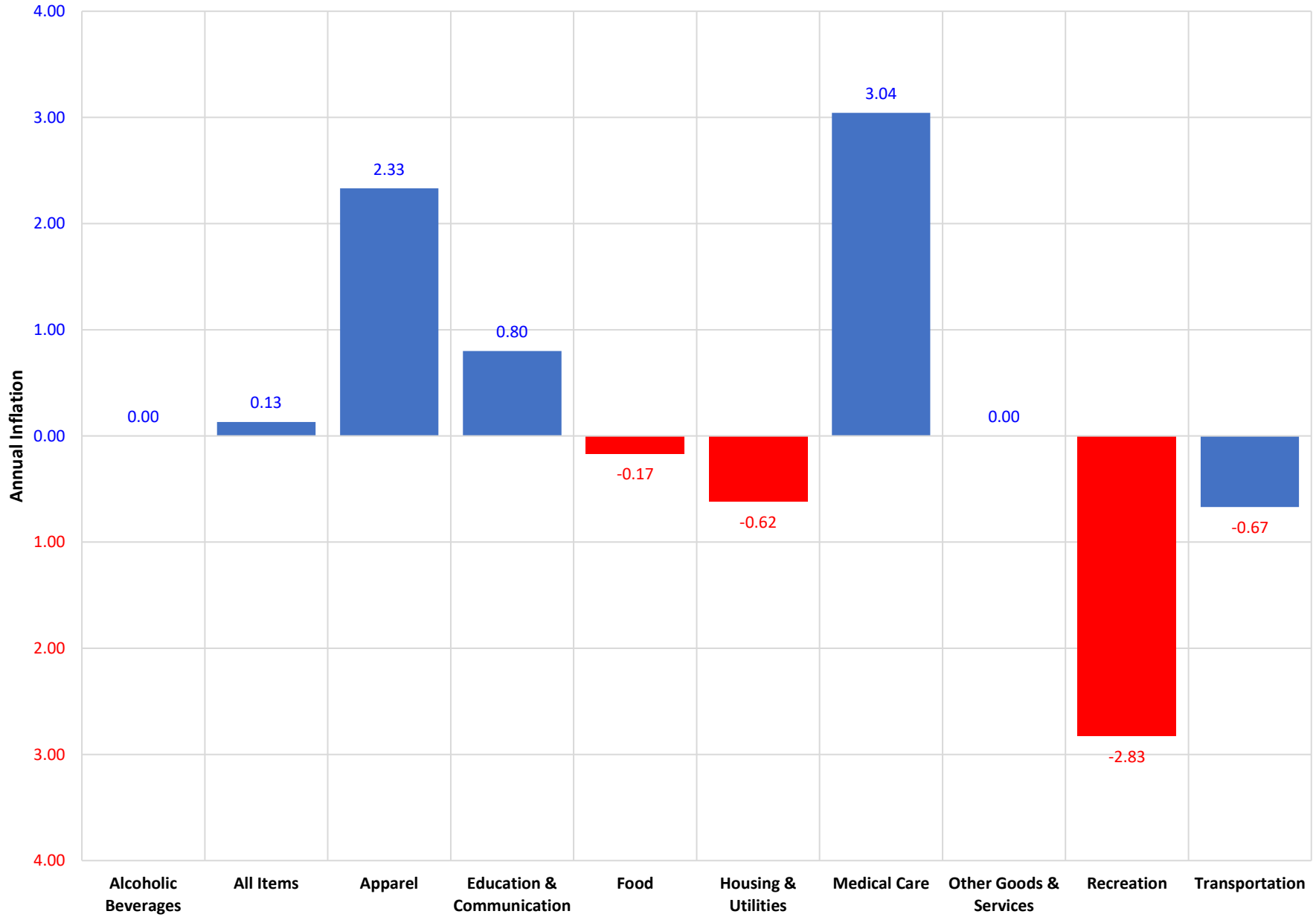


Chart 5: Consumer Price Index, All Items & 3 Largest Groups, Saipan, Q1 2017 to Q2 2020

