

Table 1: Quarterly Inflation, by Group, Tinian: Q1 2019 - Q4 2022
2nd Quarter 2017 = 100

Group	Year and Quarter [YYYY.QQ]															
	2019.01	2019.02	2019.03	2019.04	2020.01	2020.02	2020.03	2020.04	2021.01	2021.02	2021.03	2021.04	2022.01	2022.02	2022.03	2022.04
All Items	1.8	1.5	0.9	0.6	0.1	0.1	-0.3	-0.6	0.5	0.4	1.6	3.0	2.7	5.3	5.6	5.7
Food	2.2	2.3	1.4	0.3	-0.2	-0.2	0.5	0.4	2.0	1.9	2.7	2.9	2.1	6.3	7.9	10.4
Alcoholic Beverages	0.1	0.1	0.1	0.0	0.0	0.0	0.0	0.0	0.0	0.0	0.0	0.1	2.2	2.7	2.7	2.6
Housing & Utilities	0.5	0.7	0.0	-0.9	-0.6	-0.9	0.4	0.3	2.0	3.3	3.6	6.0	6.8	7.6	8.2	6.1
Apparel	1.2	2.1	4.2	8.7	2.3	1.4	-0.6	-0.6	0.0	0.0	0.0	-1.2	-1.4	0.1	0.1	0.9
Transportation	5.7	1.3	-0.7	-3.1	-0.7	-3.2	-7.8	-10.2	-8.7	-3.3	2.5	7.5	6.4	6.0	5.6	3.3
Medical Care	0.5	0.6	3.6	3.6	3.0	2.9	0.0	0.0	0.0	0.0	1.5	1.5	-3.8	-3.5	-4.9	-2.1
Recreation	-0.3	-0.3	-2.7	-3.1	-2.7	-2.7	0.1	0.8	0.1	-12.6	-12.7	-12.4	-12.0	1.7	1.4	1.1
Education & Communication	2.2	2.5	0.8	1.3	0.7	5.6	4.5	4.5	5.5	0.8	2.0	4.3	6.7	10.4	8.1	7.4
Other Goods & Services	0.0	0.0	0.0	0.0	0.0	-0.8	-0.8	-0.8	-0.8	0.0	0.0	0.0	0.0	0.0	2.4	2.4

Table 2: Annual Inflation, by Group, Tinian: Q4 2011 - Q4 2022
2nd Quarter 2017 = 100

Group	Year and Quarter [YYYY.QQ]											
	2011.04	2012.04	2013.04	2014.04	2015.04	2016.04	2017.04	2018.04	2019.04	2020.04	2021.04	2022.04
All Items	5.3	5.4	-0.8	-0.1	-4.1	0.5	1.5	1.6	0.6	-0.6	3.0	5.7
Food	2.2	1.8	2.3	5.9	2.4	1.6	0.4	1.6	0.3	0.4	2.9	10.4
Alcoholic Beverages	2.2	4.1	0.1	4.1	0.0	0.0	0.0	0.0	0.0	0.0	0.1	2.6
Housing & Utilities	5.0	8.6	0.8	-6.1	-12.1	0.3	2.7	0.3	-0.9	0.3	6.0	6.1
Apparel	-1.6	-4.5	-3.3	4.4	2.3	-0.1	-2.7	-4.0	8.7	-0.6	-1.2	0.9
Transportation	13.0	3.8	0.0	-2.7	-7.9	-0.1	2.1	8.7	-3.1	-10.2	7.5	3.3
Medical Care	14.6	12.9	-8.9	-0.1	-0.7	0.0	0.0	0.5	3.6	0.0	1.5	-2.1
Recreation	6.3	1.6	1.9	-1.0	-0.8	14.6	18.2	-0.3	-3.1	0.8	-12.4	1.1
Education & Communication	0.0	3.7	-2.3	-1.0	-1.9	0.0	-0.5	3.7	1.3	4.5	4.3	7.4
Other Goods & Services	3.4	1.9	0.5	11.0	0.0	-6.0	0.2	0.0	0.0	-0.8	0.0	2.4

Table 3: Consumer Price Index, by Group, Tinian: Q1 2010 - Q4 2022
2nd Quarter 2017 = 100

Group	Year and Quarter [YYYY.QQ]															
	2010.01	2010.02	2010.03	2010.04	2011.01	2011.02	2011.03	2011.04	2012.01	2012.02	2012.03	2012.04	2013.01	2013.02	2013.03	2013.04
All Items	89.1	90.3	90.0	93.0	93.9	94.4	97.7	98.0	100.2	100.5	100.2	103.3	103.6	103.7	102.3	102.4
Food	87.5	86.6	86.4	85.3	84.3	84.3	85.4	87.2	87.8	88.6	88.4	88.8	88.9	90.6	90.7	90.8
Alcoholic Beverages	90.1	92.1	92.1	90.2	92.0	92.0	92.1	92.2	92.2	94.9	94.0	96.0	95.8	95.8	96.1	96.1
Housing & Utilities	94.7	99.6	98.7	103.6	105.8	105.8	109.8	108.7	116.4	115.6	115.1	118.1	119.5	119.0	118.7	119.0
Apparel	108.4	104.1	104.3	104.0	103.1	102.3	102.6	102.4	102.3	101.4	99.5	97.8	96.9	95.1	94.5	94.5
Transportation	92.0	93.0	93.7	93.3	96.5	104.4	106.1	105.4	104.8	108.0	109.8	109.4	108.9	108.9	109.4	109.4
Medical Care	71.5	71.5	71.5	85.5	85.5	85.5	96.6	98.0	96.0	96.0	96.0	110.6	111.0	111.0	100.8	100.8
Recreation	68.4	68.2	68.1	67.8	67.4	67.2	72.1	72.1	74.9	74.5	73.6	73.3	73.7	75.3	74.7	74.7
Education & Communication	101.3	101.8	101.5	100.9	101.2	101.0	101.0	101.0	101.6	101.7	101.3	104.7	101.4	101.7	102.0	102.3
Other Goods & Services	87.9	89.3	89.3	90.3	92.4	92.4	92.7	93.3	93.0	95.0	94.5	95.1	96.7	95.9	95.6	95.6

Chart 1: Quarterly Inflation, All Item, Tinian, Q1 2019 to Q4 2022

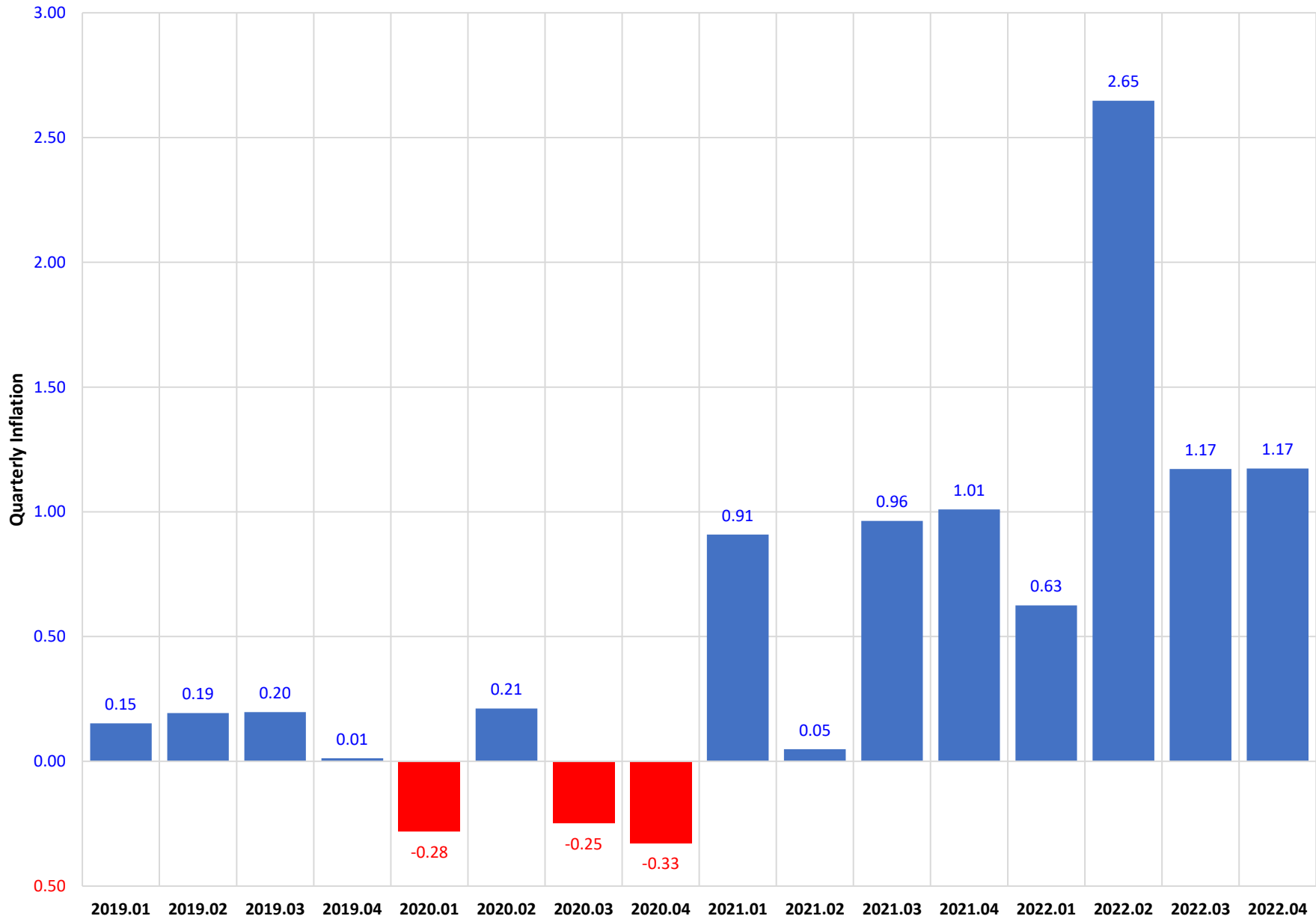


Chart 2: Quarterly Inflation Rate, By Group, Tinian, Q4 2022

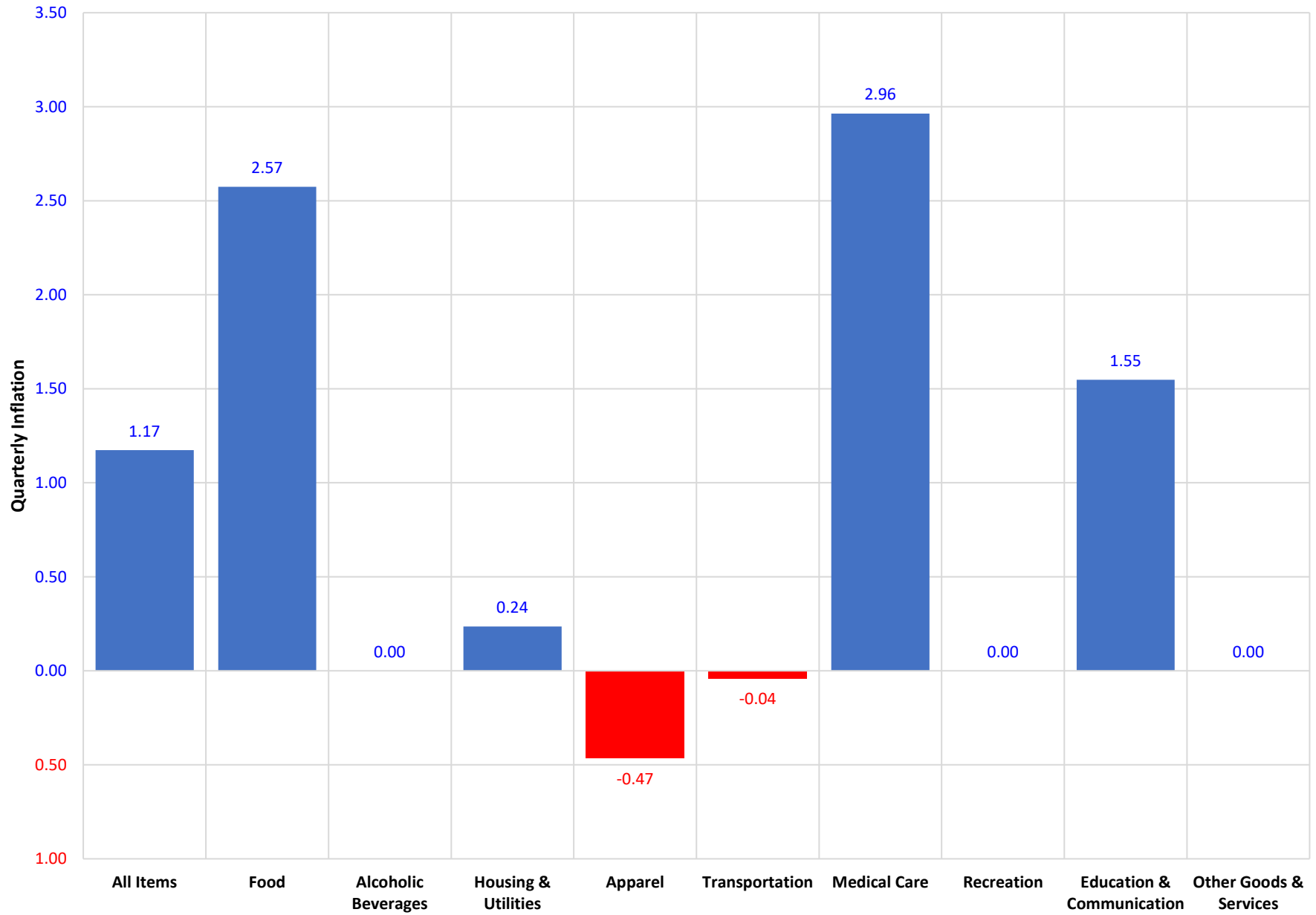


Chart 3: Annual Inflation Rate, All Items, Tinian, Q4 2011 to Q4 2022

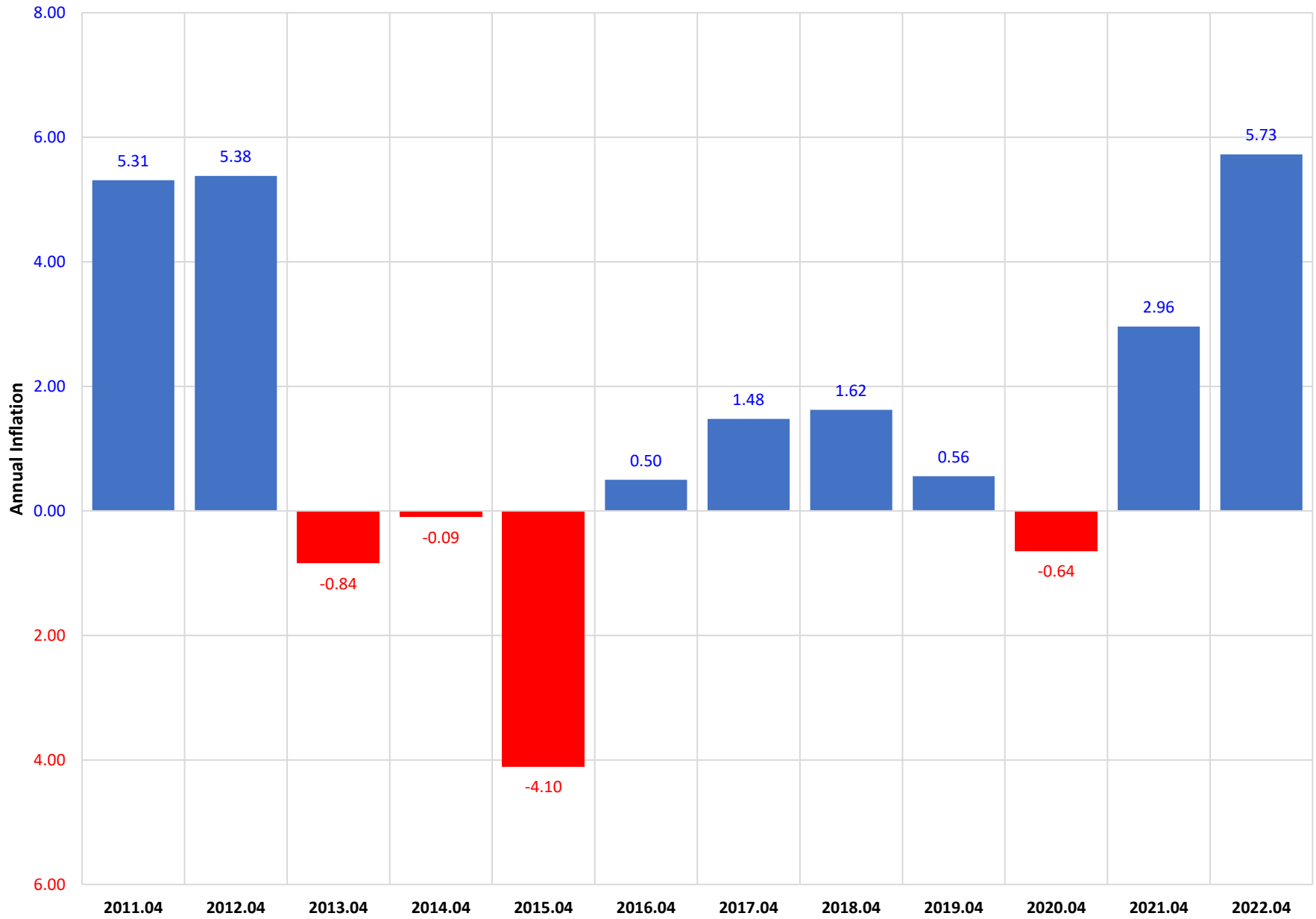


Chart 4: Annual Inflation Rate, By Group, Q4 2022

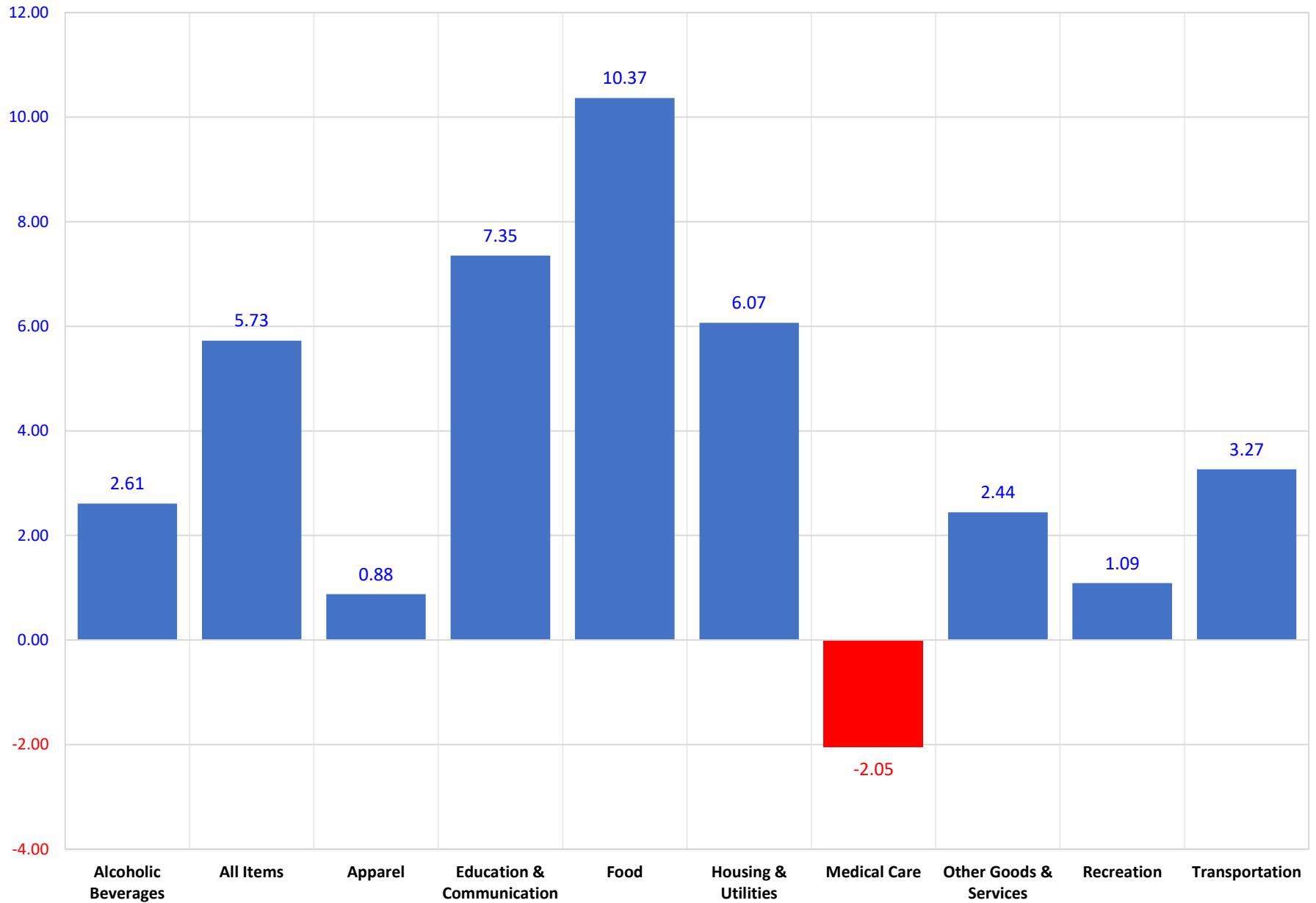


Chart 5: Consumer Price Index, All Items & 3 Largest Groups, Tinian, Q1 2019 to Q4 2022

