

Table 1: Quarterly Inflation Rate, by Group, Rota: Q3 2019 - Q2 2023
2nd Quarter 2017 = 100

Group	Year and Quarter [YYYY.QQ]															
	2019.03	2019.04	2020.01	2020.02	2020.03	2020.04	2021.01	2021.02	2021.03	2021.04	2022.01	2022.02	2022.03	2022.04	2023.01	2023.02
All Items	0.3	-0.1	-0.1	0.1	0.2	-0.1	-0.2	0.4	0.3	0.9	1.3	1.5	1.1	1.0	0.1	-0.6
Food	-0.3	-0.3	0.4	-0.1	-0.3	0.7	-2.0	-0.3	-0.2	0.9	2.0	1.7	2.0	2.6	1.6	-0.3
Alcoholic Beverages	-8.2	0.0	-2.3	5.7	0.0	0.0	0.0	0.0	0.0	0.0	0.7	7.5	3.7	2.6	1.3	-2.4
Housing & Utilities	-1.0	0.0	1.4	0.0	0.9	-1.2	2.7	3.7	3.2	4.8	3.9	0.0	5.3	-0.1	0.0	-5.5
Apparel	0.0	0.0	0.0	0.0	-1.7	0.0	0.0	0.0	0.0	0.0	0.0	0.0	0.0	0.0	0.0	0.0
Transportation	-1.1	-0.6	-2.2	-0.1	1.1	-3.8	1.2	0.0	0.0	0.0	0.0	9.3	-0.1	-5.7	-0.5	0.0
Medical Care	0.0	0.0	0.0	0.4	0.0	0.7	0.0	0.0	-5.9	0.0	11.3	0.0	0.0	0.0	0.0	-0.4
Recreation	0.0	0.0	0.0	0.0	0.0	0.0	0.0	0.0	0.0	0.0	0.0	0.0	0.0	0.0	0.0	0.0
Education & Communication	1.2	0.0	-0.4	0.0	0.3	0.0	0.0	0.5	0.2	0.8	1.4	0.4	0.0	1.8	-0.7	-0.1
Other Goods & Services	0.0	0.0	0.0	0.6	0.0	0.1	-0.1	0.0	0.0	0.0	0.0	2.8	2.0	0.0	0.5	-0.3

Table 2: Annual Inflation Rate, by Group, Rota: Q2 2011 - Q2 2023
2nd Quarter 2017 = 100

Group	Year and Quarter [YYYY.QQ]												
	2011.02	2012.02	2013.02	2014.02	2015.02	2016.02	2017.02	2018.02	2019.02	2020.02	2021.02	2022.02	2023.02
All Items	5.2	2.1	3.0	1.4	-4.2	-0.3	3.0	0.4	0.0	0.2	0.3	4.1	1.7
Food	-1.3	3.6	2.6	1.6	5.0	1.7	0.3	0.9	1.9	-0.3	-1.9	4.4	6.0
Alcoholic Beverages	1.8	1.0	0.0	10.9	-1.7	-4.5	1.9	0.0	8.3	-5.3	0.0	8.2	5.3
Housing & Utilities	3.7	0.6	5.5	1.2	-10.2	-2.0	6.8	-1.1	0.2	0.4	6.2	12.4	-0.5
Apparel	-3.1	-0.3	-5.1	0.3	1.4	6.5	0.4	0.0	-15.0	0.0	-1.7	0.0	0.0
Transportation	14.6	2.6	-1.3	0.9	-8.7	-8.6	6.9	-3.2	8.9	-3.9	-1.6	9.4	-6.3
Medical Care	17.3	11.7	6.0	1.9	-1.1	0.4	-0.4	-2.0	0.0	0.4	0.7	4.8	-0.4
Recreation	0.2	0.0	-0.3	3.0	-5.0	31.8	5.2	0.0	0.0	0.0	0.0	0.0	0.0
Education & Communication	-0.4	-0.8	-4.1	0.2	1.3	5.3	0.0	0.1	-2.9	0.8	0.8	2.8	1.0
Other Goods & Services	8.9	-1.2	2.4	1.5	10.0	0.0	-6.7	2.6	4.8	0.6	0.0	2.7	2.2

Table 3: Consumer Price Index, by Group, Rota: Q1 2010 - Q2 2023
2nd Quarter 2017 = 100

Group	Year and Quarter [YYYY.QQ]															
	2010.01	2010.02	2010.03	2010.04	2011.01	2011.02	2011.03	2011.04	2012.01	2012.02	2012.03	2012.04	2013.01	2013.02	2013.03	2013.04
All Items	90.7	90.6	91.6	92.5	94.5	95.3	96.7	96.7	97.1	97.3	98.3	99.5	99.6	100.2	99.7	100.0
Food	87.7	87.7	86.9	86.3	86.7	86.6	88.0	88.1	89.3	89.7	90.1	90.0	90.0	92.0	92.5	96.9
Alcoholic Beverages	91.8	91.8	93.2	93.2	93.4	93.4	93.4	93.4	94.3	94.3	94.3	94.4	94.3	94.3	103.4	117.2
Housing & Utilities	95.3	95.4	97.8	96.1	99.0	99.0	99.1	99.1	99.6	99.6	102.1	104.0	104.4	105.1	105.1	104.5
Apparel	99.7	100.2	97.4	97.7	97.7	97.2	98.1	97.9	97.1	96.9	95.0	92.0	90.9	91.9	92.3	92.4
Transportation	94.1	95.6	96.5	97.4	101.2	109.6	110.1	109.6	110.6	112.5	113.8	114.2	113.7	111.0	113.0	110.5
Medical Care	71.4	71.4	71.4	83.8	83.8	83.8	93.7	93.7	93.6	93.6	93.6	97.7	98.3	99.3	90.4	90.4
Recreation	73.7	73.8	73.8	73.6	74.1	74.0	73.7	73.3	74.3	74.0	73.3	73.6	73.7	73.7	72.8	72.8
Education & Communication	119.2	98.8	98.5	98.4	98.4	98.4	97.6	97.6	97.6	97.6	93.2	93.4	93.0	93.6	93.8	93.8
Other Goods & Services	85.4	87.1	89.6	90.7	94.8	94.8	93.7	93.7	93.7	93.7	94.2	94.9	94.9	95.9	97.0	97.5

Chart 1: Quarterly Inflation Rate, All Items, Rota: Q3 2019 to Q2 2023

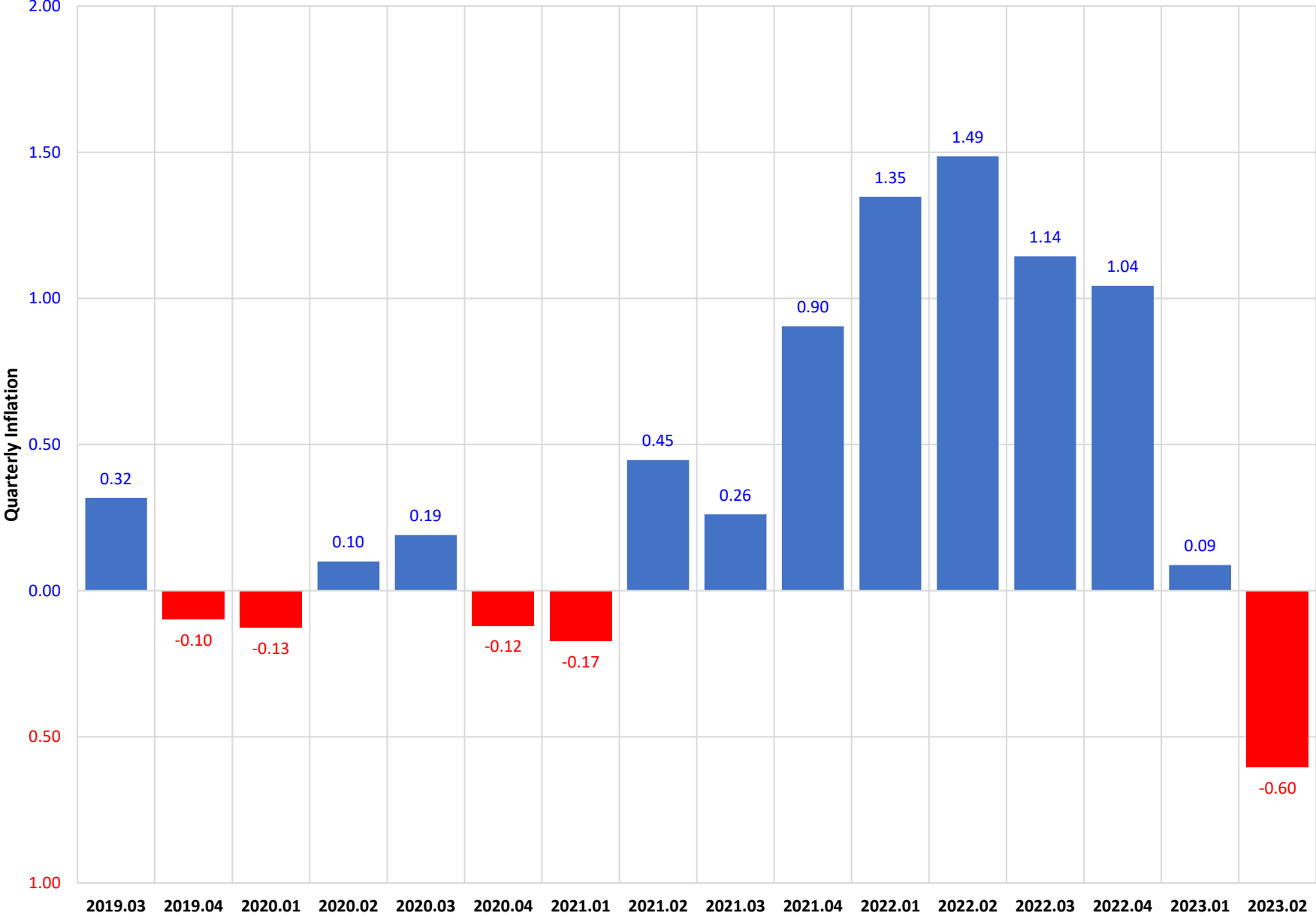


Chart 2: Quarterly Inflation Rate, By Group, Rota: Q2 2023

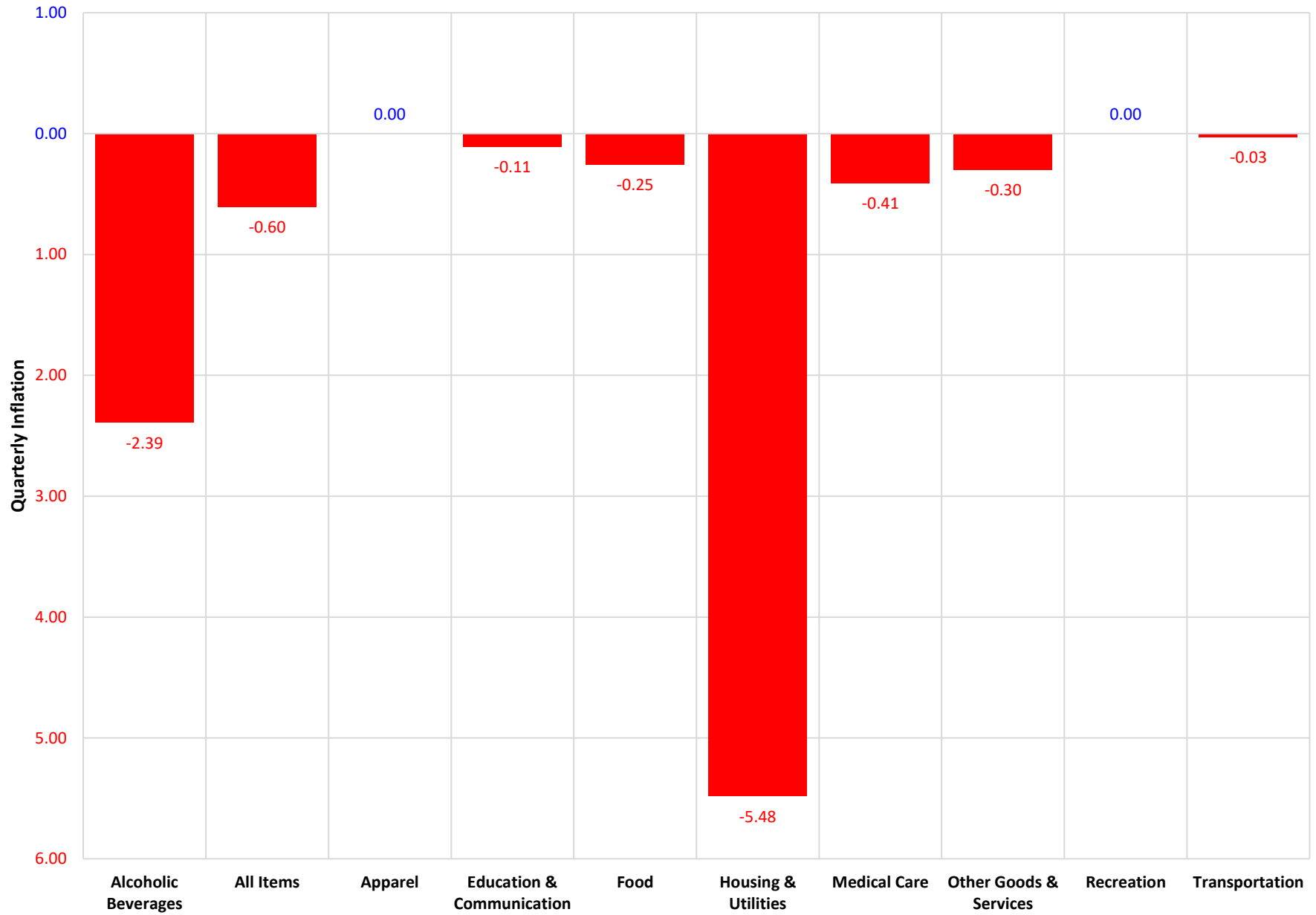


Chart 3: Annual Inflation Rate, All Items, Rota: Q2 2011 to Q2 2023

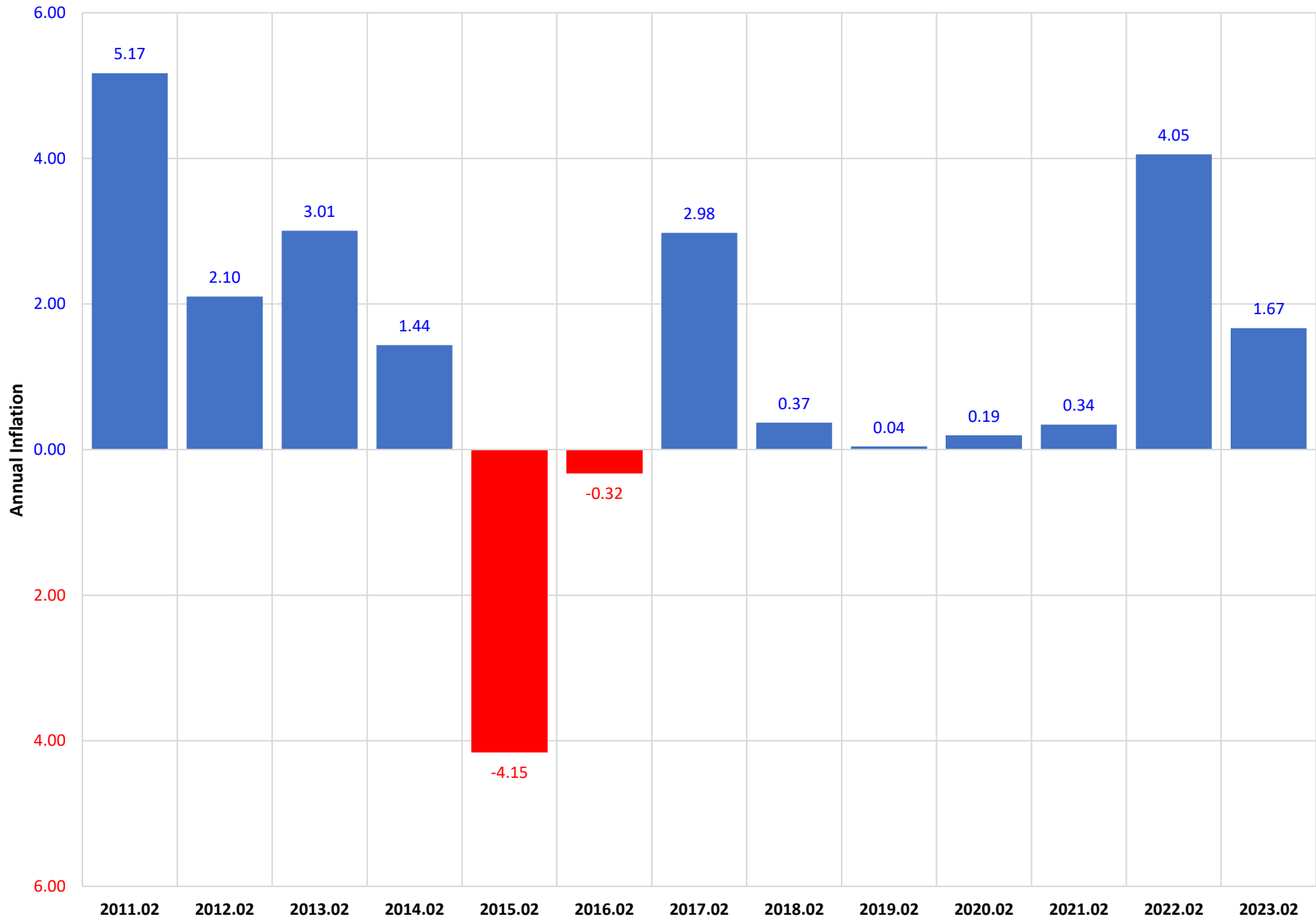


Chart 4: Annual Inflation Rate, By Group, Rota: Q2 2023

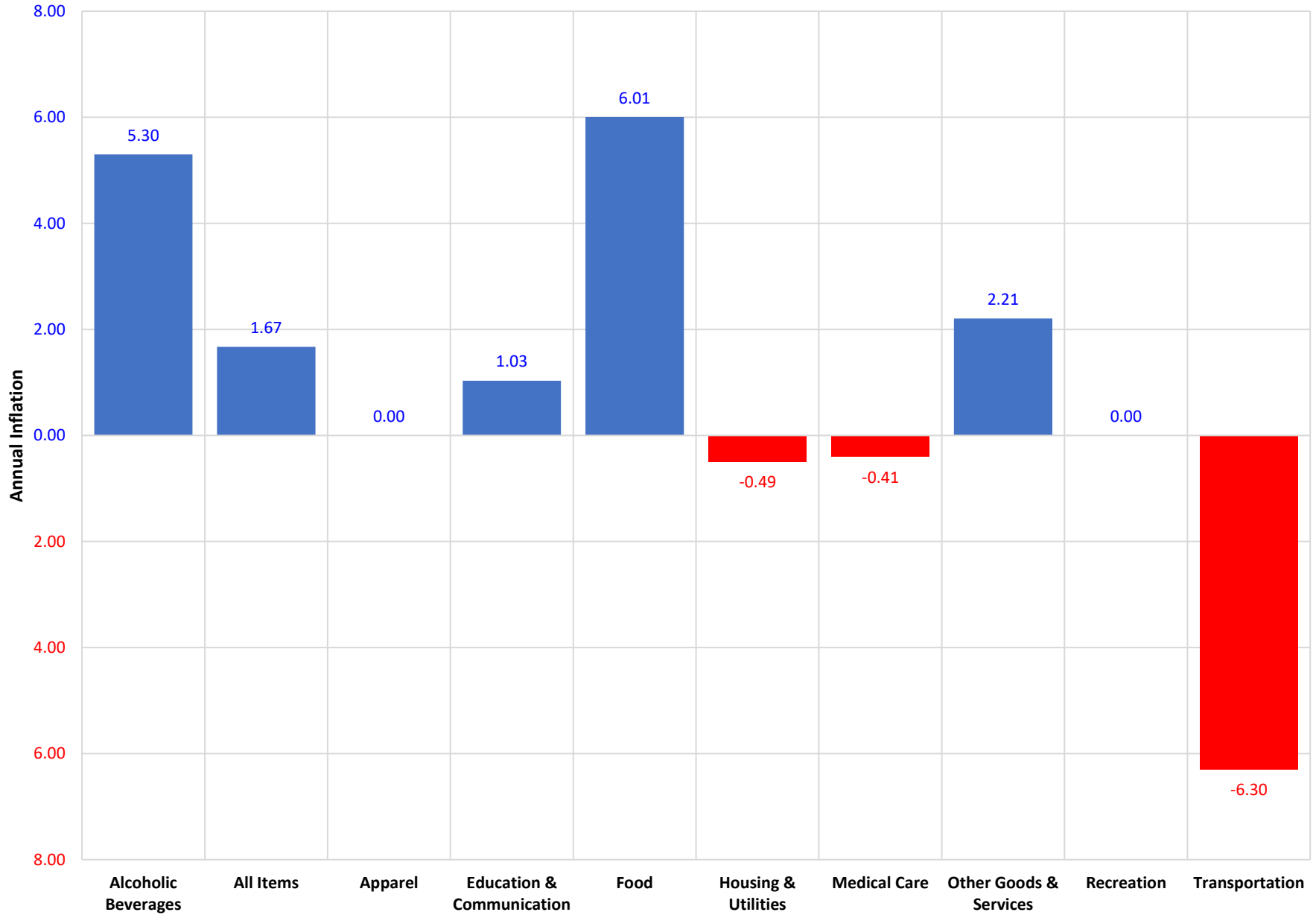


Chart 5: Consumer Price Index by Group, Rota: Q2 2017 to Q2 2023

