

Table 1: Quarterly Inflation Rate, by Group, Saipan: Q3 2019 - Q2 2023
2nd Quarter 2017 = 100

Group	Year and Quarter [YYYY.QQ]															
	2019.03	2019.04	2020.01	2020.02	2020.03	2020.04	2021.01	2021.02	2021.03	2021.04	2022.01	2022.02	2022.03	2022.04	2023.01	2023.02
All Items	0.1	-0.1	-0.9	0.1	0.0	0.0	-0.2	0.8	0.8	0.0	0.9	2.1	0.4	0.5	1.3	-0.5
Food	-0.2	0.4	-0.1	-0.3	0.0	0.0	-0.4	0.8	1.7	0.0	2.0	1.3	2.9	1.3	2.2	0.1
Alcoholic Beverages	0.3	0.0	0.0	0.0	0.0	0.0	0.2	-0.2	0.2	0.0	2.6	2.3	3.0	5.6	1.9	2.6
Housing & Utilities	0.4	0.2	-0.5	-0.2	0.0	0.0	0.5	0.7	0.8	0.0	0.9	0.4	1.4	0.6	0.3	-1.1
Apparel	0.5	-0.1	-0.3	0.0	0.0	0.0	0.1	0.2	0.0	0.0	0.3	1.4	0.1	0.0	0.9	-2.4
Transportation	-0.1	0.0	-2.3	0.2	0.0	0.0	-0.9	1.2	0.1	0.0	0.2	4.3	-1.7	-0.4	1.7	0.0
Medical Care	-0.2	0.0	-0.4	0.6	0.0	0.0	0.0	2.5	-0.1	0.0	0.3	2.9	-4.3	0.0	0.4	1.4
Recreation	-1.4	-8.2	1.1	0.0	0.0	0.0	-0.7	0.0	2.4	0.0	2.1	-0.1	2.8	0.4	0.0	1.5
Education & Communication	0.0	-2.4	-0.9	2.4	0.0	0.0	0.0	-0.1	1.6	0.0	0.7	2.3	-1.1	2.7	1.9	-1.3
Other Goods & Services	1.0	0.3	-0.3	2.5	0.0	0.0	-0.2	0.4	-0.4	0.0	0.7	3.4	0.0	-0.4	-0.2	0.5

Table 2: Annual Inflation Rate, by Group, Saipan: Q2 2008 - Q2 2023
2nd Quarter 2017 = 100

Group	Year and Quarter [YYYY.QQ]															
	2008.02	2009.02	2010.02	2011.02	2012.02	2013.02	2014.02	2015.02	2016.02	2017.02	2018.02	2019.02	2020.02	2021.02	2022.02	2023.02
All Items	10.9	-3.2	4.8	3.7	2.7	0.1	0.0	-2.9	0.1	3.9	-1.3	1.6	-0.8	0.6	3.8	1.8
Food	6.1	9.5	1.0	5.7	1.1	0.3	4.0	4.3	0.1	-0.5	1.6	-0.4	-0.2	0.4	5.1	6.6
Alcoholic Beverages	3.4	10.6	1.3	3.3	0.8	2.2	4.3	0.5	-0.5	0.9	0.0	-0.6	0.3	0.0	5.2	13.8
Housing & Utilities	24.3	-16.5	6.4	-5.4	1.3	1.3	0.6	-9.4	-3.6	13.7	-0.9	0.8	-0.2	1.3	2.1	1.1
Apparel	-0.7	-0.1	0.2	-0.9	0.3	-4.8	0.6	-0.2	-0.1	-0.3	1.1	0.0	0.2	0.3	1.7	-1.4
Transportation	3.4	4.8	10.2	9.9	0.9	-0.2	1.7	-5.6	-2.9	1.8	-5.8	4.8	-2.1	0.3	4.7	-0.4
Medical Care	7.1	1.6	-1.1	18.6	15.6	3.8	-10.1	0.2	0.3	0.1	1.3	-2.0	0.0	2.5	3.0	-2.6
Recreation	-0.8	2.7	-0.8	0.2	1.7	-0.8	2.0	-2.5	44.3	-0.4	-0.2	1.6	-8.4	-0.7	4.4	4.7
Education & Communication	-0.1	-1.5	8.3	-0.9	-0.3	-9.3	-1.2	0.1	7.1	0.1	1.0	1.6	-0.9	-0.1	4.6	2.1
Other Goods & Services	0.0	9.3	2.8	7.7	0.8	0.1	0.2	15.9	0.0	4.1	4.7	2.8	3.5	0.2	3.6	0.0

Table 3: Consumer Price Index, by Group, Saipan: Q1 2009 - Q2 2023
2nd Quarter 2017 = 100

Group	Year and Quarter [YYYY.QQ]															
	2009.01	2009.02	2009.03	2009.04	2010.01	2010.02	2010.03	2010.04	2011.01	2011.02	2011.03	2011.04	2012.01	2012.02	2012.03	2012.04
All Items	87.1	88.6	88.8	91.8	92.4	92.8	93.1	96.9	95.5	96.3	99.0	99.2	99.6	98.9	99.1	100.2
Food	84.4	85.6	87.7	87.4	86.1	86.5	86.1	87.3	89.1	91.4	92.6	92.3	92.2	92.4	92.4	92.2
Alcoholic Beverages	81.3	88.2	88.5	88.5	89.3	89.3	89.3	91.7	92.3	92.3	92.7	88.6	91.7	93.0	93.5	93.5
Housing & Utilities	95.5	96.9	94.2	103.0	102.0	103.1	103.2	104.2	97.3	97.6	98.8	99.3	99.4	98.9	98.1	99.8
Apparel	105.5	105.5	109.1	110.1	108.4	105.8	105.7	105.9	105.3	104.8	105.7	107.1	105.8	105.1	102.8	101.3
Transportation	83.7	86.5	87.7	90.2	94.6	95.3	97.3	103.2	103.6	104.7	107.5	107.6	109.4	105.7	107.6	109.8
Medical Care	78.5	78.5	76.0	76.1	77.6	77.7	76.9	92.2	92.1	92.1	104.4	104.4	104.3	106.5	107.5	109.3
Recreation	67.6	69.8	70.0	70.2	68.7	69.2	68.6	68.4	69.4	69.3	69.3	68.7	70.5	70.5	70.4	70.3
Education & Communication	97.2	97.1	105.5	105.9	105.2	105.2	104.9	104.5	104.2	104.2	104.6	105.2	105.1	103.9	104.5	104.9
Other Goods & Services	74.0	74.0	74.7	75.0	74.7	76.0	76.0	77.4	81.8	81.9	82.1	82.2	82.4	82.5	82.6	82.6

Table 3: Consumer Price Index, by Group, Saipan: Q1 2009 - Q2 2023 (Continued)
2nd Quarter 2017 = 100

Group	Year and Quarter [YYYY.QQ]															
	2013.01	2013.02	2013.03	2013.04	2014.01	2014.02	2014.03	2014.04	2015.01	2015.02	2015.03	2015.04	2016.01	2016.02	2016.03	2016.04
All Items	99.1	99.0	97.9	97.7	98.2	99.0	98.3	98.8	95.3	96.1	94.7	94.7	95.0	96.2	96.4	96.7
Food	92.4	92.6	93.8	93.9	95.6	96.3	96.3	99.6	100.3	100.4	100.1	100.4	100.0	100.5	99.3	99.3
Alcoholic Beverages	95.1	95.1	97.0	97.0	97.8	99.2	99.2	99.6	99.6	99.6	102.2	102.2	102.2	99.1	100.0	100.0
Housing & Utilities	100.1	100.1	100.1	99.9	99.4	100.8	98.9	95.6	89.2	91.3	88.3	88.4	85.0	88.0	87.6	88.3
Apparel	100.9	100.0	99.5	99.5	100.5	100.6	98.9	99.2	100.4	100.4	100.3	100.4	100.4	100.3	100.2	100.2
Transportation	106.2	105.4	106.0	105.3	106.4	107.2	107.2	108.9	100.2	101.2	98.5	98.5	96.6	98.3	100.4	100.7
Medical Care	110.6	110.6	99.1	99.1	99.4	99.4	99.5	99.6	99.6	99.6	99.6	99.6	99.9	99.9	99.9	99.9
Recreation	70.0	70.0	69.7	69.6	69.9	71.4	69.9	69.9	69.8	69.6	69.5	69.5	100.4	100.4	100.7	100.4
Education & Communication	94.3	94.3	94.6	94.6	93.1	93.1	93.6	93.2	93.2	93.3	93.4	93.4	99.9	99.9	99.9	99.9
Other Goods & Services	82.6	82.6	82.8	82.7	82.8	82.8	82.8	92.0	96.0	96.0	96.0	96.0	95.9	96.0	96.3	96.4

Table 3: Consumer Price Index, by Group, Saipan: Q1 2009 - Q2 2023 (Continued)
2nd Quarter 2017 = 100

Group	Year and Quarter [YYYY.QQ]															
	2017.01	2017.02	2017.03	2017.04	2018.01	2018.02	2018.03	2018.04	2019.01	2019.02	2019.03	2019.04	2020.01	2020.02	2020.03	2020.04
All Items	99.8	100.0	99.7	99.5	97.9	98.7	98.4	101.3	100.6	100.3	100.4	100.3	99.4	99.5	99.5	99.5
Food	100.1	100.0	99.6	100.7	101.7	101.6	102.0	102.3	102.2	101.1	101.0	101.4	101.3	100.9	100.9	100.9
Alcoholic Beverages	100.0	100.0	100.0	100.0	100.0	100.0	100.0	100.8	99.6	99.4	99.6	99.6	99.6	99.6	99.6	99.6
Housing & Utilities	99.5	100.0	99.9	100.7	99.4	99.1	99.4	100.0	99.6	100.0	100.4	100.5	100.0	99.8	99.8	99.8
Apparel	97.5	100.0	99.0	100.1	101.0	101.1	100.1	98.5	101.1	101.0	101.5	101.5	101.2	101.2	101.2	101.2
Transportation	100.7	100.0	100.0	96.9	90.9	94.2	92.4	101.7	98.7	98.7	98.6	98.7	96.4	96.6	96.6	96.6
Medical Care	100.0	100.0	98.0	101.0	101.3	101.3	101.3	101.6	102.1	99.3	99.1	99.1	98.7	99.3	99.3	99.3
Recreation	100.0	100.0	100.0	99.6	99.6	99.8	99.8	99.1	101.4	101.4	100.0	91.8	92.8	92.8	92.8	92.8
Education & Communication	99.9	100.0	99.7	99.4	101.1	101.0	103.2	103.3	103.6	102.6	102.6	100.2	99.3	101.7	101.7	101.7
Other Goods & Services	97.6	100.0	100.3	103.8	104.5	104.7	105.7	108.3	107.8	107.7	108.7	109.0	108.7	111.5	111.5	111.5

Table 3: Consumer Price Index, by Group, Saipan: Q1 2009 - Q2 2023 (Continued)
2nd Quarter 2017 = 100

Group	Year and Quarter [YYYY.QQ]															
	2021.01	2021.02	2021.03	2021.04	2022.01	2022.02	2022.03	2022.04	2023.01	2023.02	2023.03	2023.04	2024.01	2024.02	2024.03	2024.04
All Items	99.3	100.1	100.8	100.8	101.7	103.8	104.3	104.9	106.2	105.7						
Food	100.5	101.3	103.0	103.0	105.1	106.5	109.6	111.0	113.5	113.5						
Alcoholic Beverages	99.8	99.6	99.8	99.8	102.5	104.8	107.9	114.0	116.2	119.2						
Housing & Utilities	100.3	101.1	101.8	101.8	102.8	103.2	104.6	105.2	105.5	104.4						
Apparel	101.4	101.5	101.5	101.5	101.8	103.3	103.4	103.3	104.3	101.8						
Transportation	95.8	96.9	97.0	97.0	97.2	101.4	99.7	99.3	101.0	101.0						
Medical Care	99.3	101.8	101.7	101.7	102.0	104.9	100.3	100.4	100.8	102.2						
Recreation	92.1	92.1	94.3	94.3	96.3	96.2	98.9	99.3	99.3	100.8						
Education & Communication	101.7	101.6	103.2	103.2	103.9	106.3	105.2	108.0	110.0	108.5						
Other Goods & Services	111.3	111.7	111.2	111.2	112.0	115.8	115.8	115.4	115.2	115.7						

Chart 1: Quarterly Inflation Rate, All Items, Saipan: Q3 2019 to Q2 2023

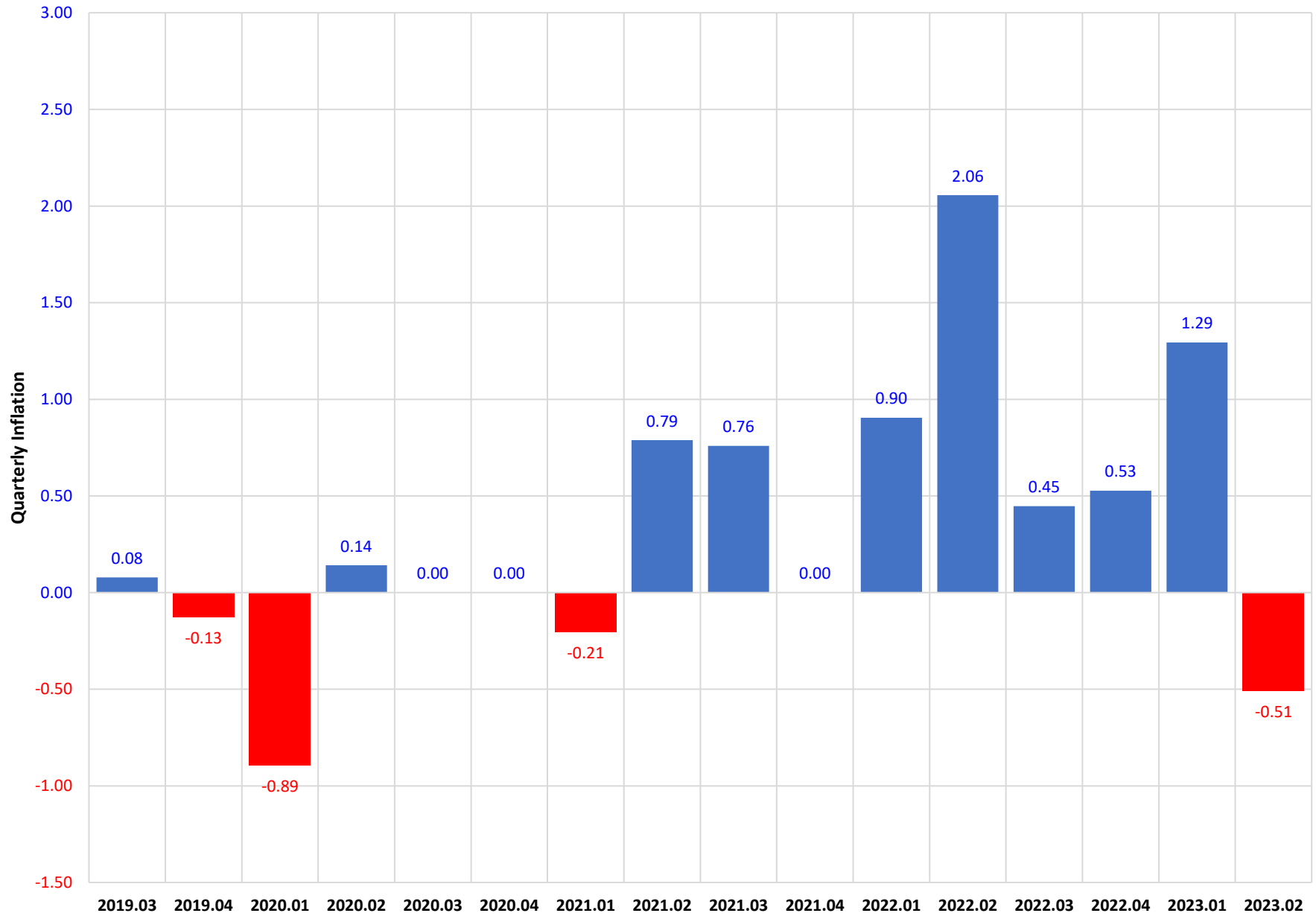


Chart 2: Quarterly Inflation Rate, By Group, Saipan: Q2 2023

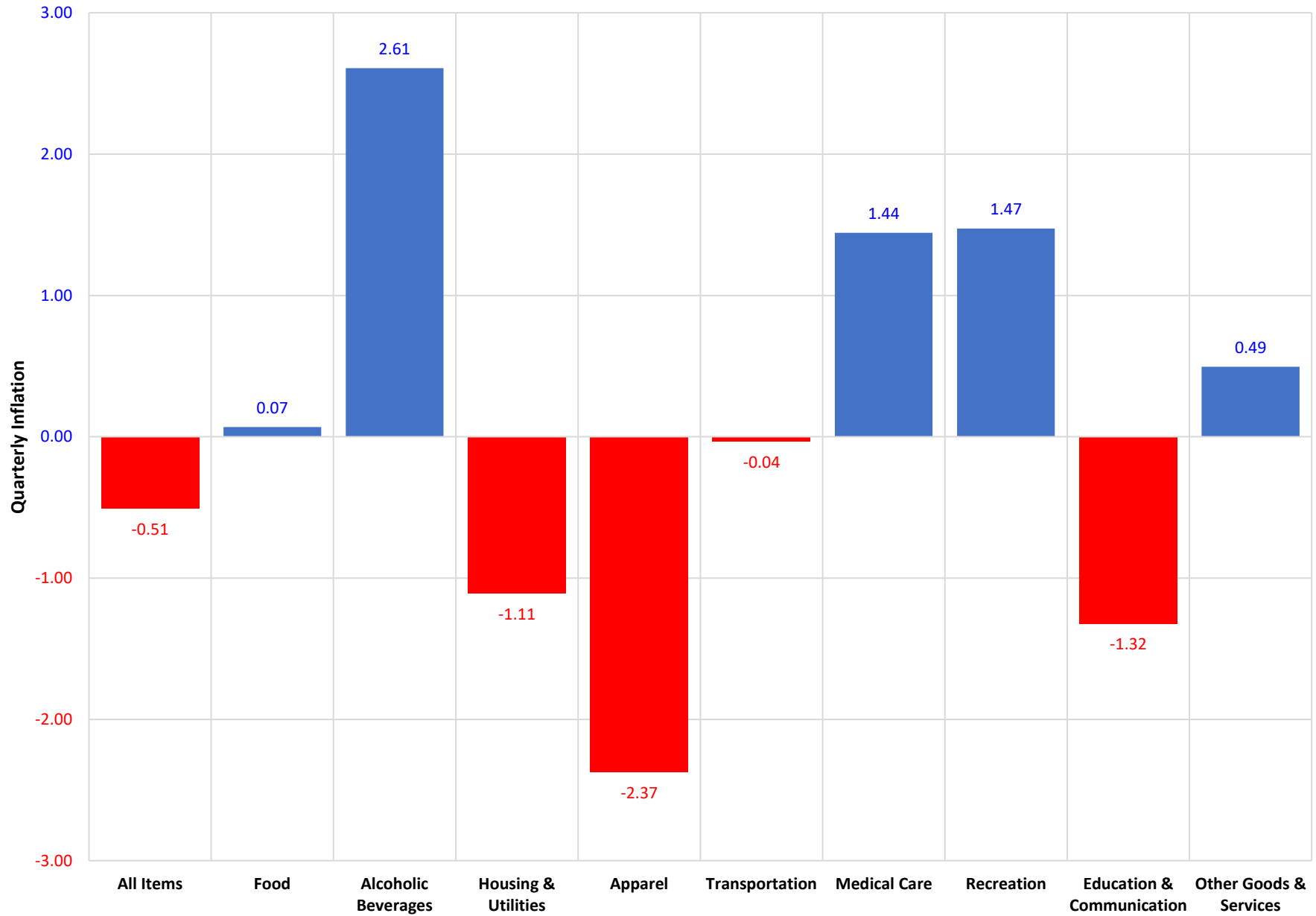


Chart 3: Annual Inflation Rate, All Items, Saipan: Q2 2008 to Q2 2023

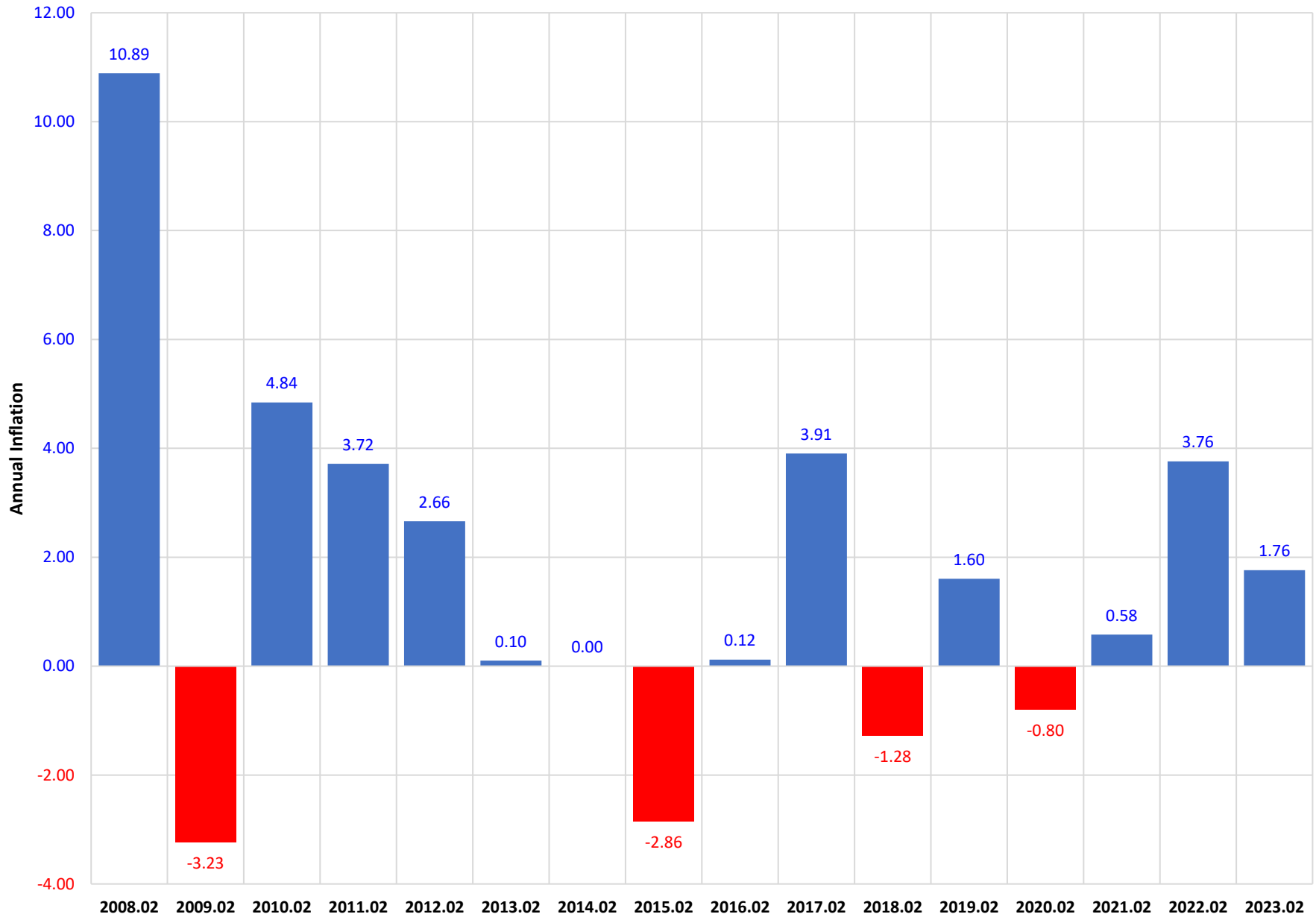


Chart 4: Annual Inflation Rate, By Group, Saipan: Q2 2023

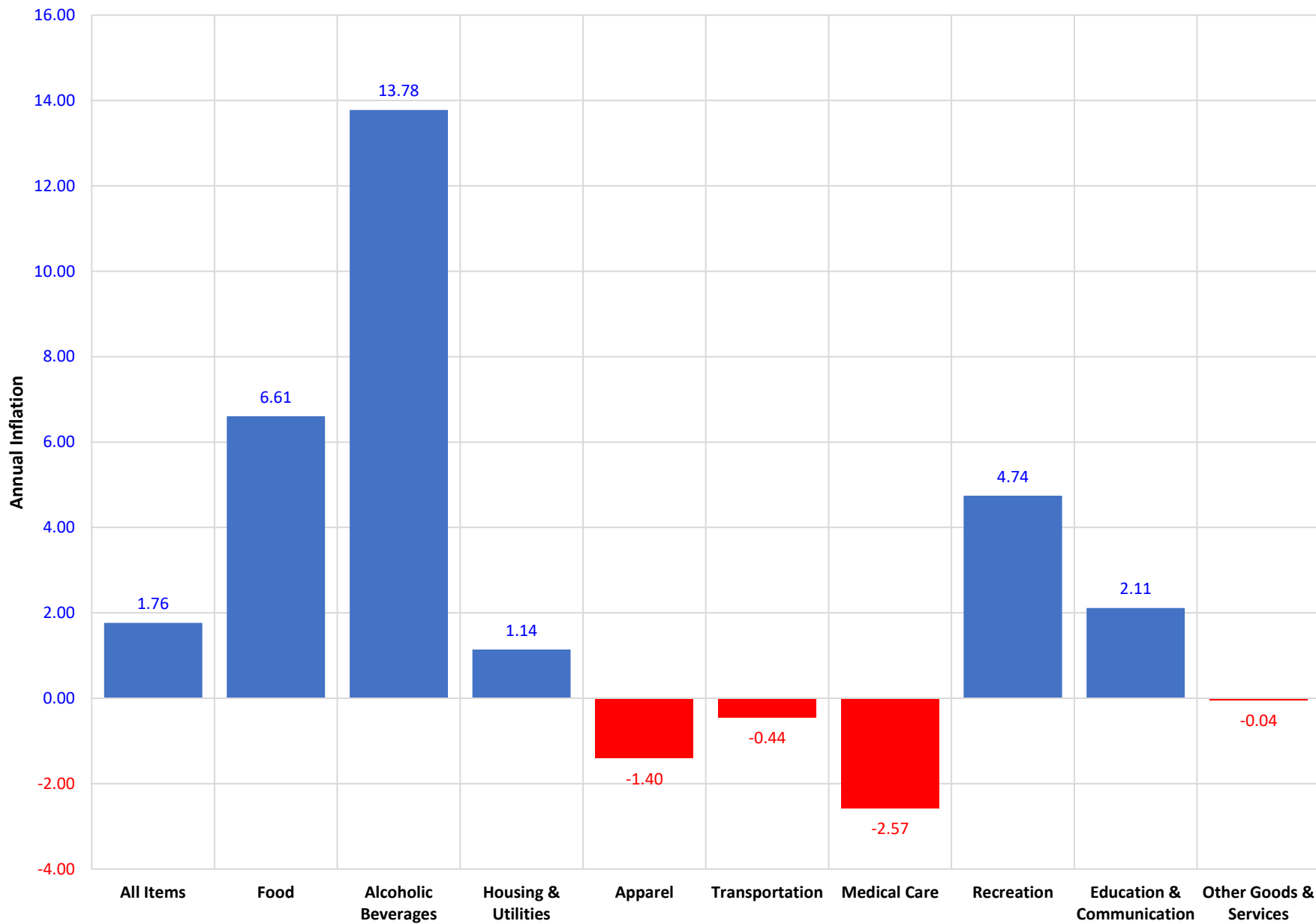


Chart 5: Consumer Price Index by Group, Saipan: Q2 2017 to Q2 2023

