



ECONOMIC INDICATOR

A QUARTERLY REPORT

APRIL - MAY 2009



DEPARTMENT OF COMMERCE
COMMONWEALTH OF THE NORTHERN MARIANA ISLANDS
CALLER BOX 10007 CK
SAIPAN, MP. 96950
TEL NO: (670) 664 - 3000

MESSAGE FROM THE SECRETARY

We are pleased to present the Second Quarter issue of the Economic Indicator, depicting the social and economic conditions of the Commonwealth of the Northern Mariana Islands (CNMI), covering April through June 2009.

This publication is made possible by data researched and tabulated under the Central Statistics Division, Department of Commerce, and with contributions from other CNMI Government departments and agencies, as well as inputs from private organizations.

Other reports published by the Department of Commerce may be accessed at:

www.commerce.gov.mp

We are committed to providing you, the public, business community, and leaders of the CNMI this quarterly issue for whatever purpose it may serve you. Moreover, we are grateful to all those who contributed to the successful compilation of this report and look forward to working closely together to ensure that future issues are published on time. We invite and welcome any suggestions or comments that may improve our quarterly publications. Please send your thoughts to our office.

Hafa Adai,

MICHAEL J. ADA
Secretary of Commerce

Table of Contents

TABLE 1 - BANKING ACTIVITY	4
FIGURE 1.1 - BANKING ACTIVITY - DEPOSITS	4
FIGURE 1.2 - BANKING ACTIVITY - LOANS	4
TABLE 2 - REMITTANCE	5
FIGURE 2 - REMITTANCE	5
TABLE 3 - AUTO SALES	5
FIGURE 3 - AUTO SALES	5
TABLE 4 - VISITOR ARRIVAL	6
FIGURE 4 - VISITOR ARRIVAL	6
TABLE 5 - AVERAGE CNMI HOTEL DAILY RATE	7
FIGURE 5 - AVERAGE CNMI HOTEL DAILY RATE	7
TABLE 6 - AVERAGE CNMI HOTEL OCCUPANCY RATE	7
FIGURE 6 - AVERAGE CNMI HOTEL OCCUPANCY RATE	7
TABLE 7 - BUSINESS GROSS REVENUE (BGR) REPORTED	8
FIGURE 7 - BUSINESS GROSS REVENUE (BGR) REPORTED	8
TABLE 8 - GOVERNMENT EXPENDITURES	8
FIGURE 8 - GOVERNMENT EXPENDITURES	8
TABLE 9 - GENERAL FUND REVENUE (TAXES AND FEES COLLECTED)	9
FIGURE 9 - GENERAL FUND REVENUE (TAXES AND FEES COLLECTED)	9
TABLE 10 - IMPORTS	10
FIGURE 10 - IMPORTS (IN THOUSANDS)	10
TABLE 11 - EXPORTS	11
FIGURE 11 - EXPORTS (IN MILLIONS)	11
TABLE 12 - TELEPHONE LINES	11
FIGURE 12.1 - COMMERCIAL PHONE LINES BY ISLAND	12
FIGURE 12.2 - RESIDENTIAL PHONE LINES BY ISLAND	12
FIGURE 12.3 - COMMERCIAL & RESIDENTIAL PHONE LINES (TOTALS)	12
TABLE 13 - BUILDING PERMITS	13
FIGURE 13.1 - NUMBER OF BUILDING PERMITS ISSUED	13
FIGURE 13.2 - VALUES OF BUILDING PERMITS ISSUED (IN MILLIONS)	13
TABLE 14 - CNMI CONSUMER PRICE INDEX (CPI)	14
TABLE 15 - CNMI CONSUMER PRICE FOR 9 SELECTED GROUPS	14
TABLE 16 - HISTORICAL CPIs FOR SELECTED GROUPS	15
LIST OF CONTRIBUTORS	16

TABLE 1 - BANKING ACTIVITY

Banking Activity (US \$ Millions)	Year				Quarter					
	2005	2006	2007	2008	2008.1	2008.2	2008.3	2008.4	2009.1	2009.2
Total Deposits	523.70	517.90	531.20	450.60	515.53	478.85	446.34	450.60	450.23	467.74
Total Demand (Checking)	178.60	143.10	156.85	135.56	152.14	144.68	140.24	135.56	134.98	131.79
Total Savings	175.40	159.70	143.25	117.86	133.63	131.00	114.10	117.86	129.10	139.40
Total TCDs*	169.70	215.10	231.10	197.18	229.76	203.17	192.00	197.18	186.15	196.55
Total Loans	193.80	180.80	161.61	141.25	156.72	149.14	144.65	141.25	136.42	134.26
Consumer	81.50	74.10	65.30	56.06	62.34	60.07	58.16	56.06	53.77	52.16
Real Estate	47.30	45.90	42.33	39.55	41.75	40.99	40.62	39.55	38.58	37.99
Commercial	65.00	60.80	53.97	45.64	52.64	48.08	45.88	45.64	44.06	44.12
Loan to Deposit Ratio	37.0%	34.9%	30.4%	31.3%	30.4%	31.1%	32.4%	31.3%	30.3%	28.7%

Source: Banking Section, Department of Commerce

*Includes Cashiers Checks

FIGURE 1.1 - BANKING ACTIVITY - DEPOSITS

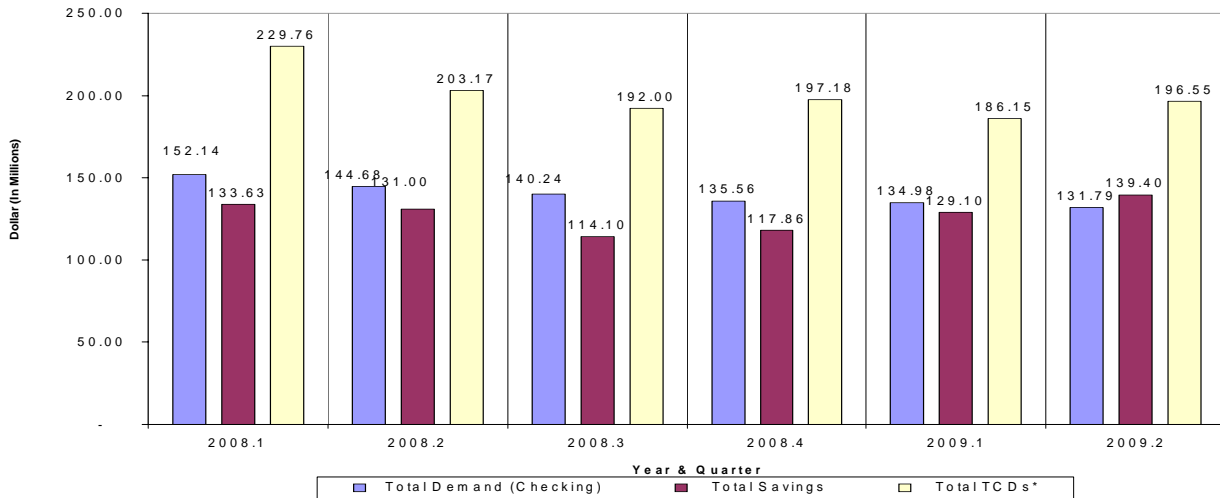


FIGURE 1.2 - BANKING ACTIVITY - LOANS

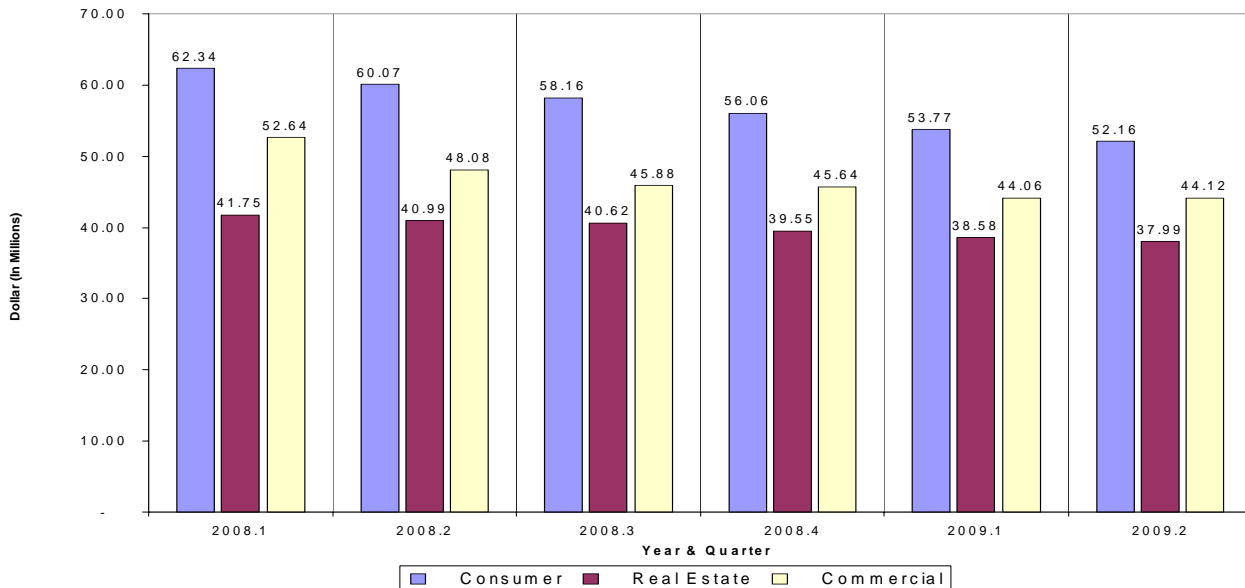


TABLE 2 - REMITTANCE

Remittances	Year				Quarter					
	2005	2006	2007	2008	2008.1	2008.2	2008.3	2008.4	2009.1	2009.2
Remittances (US \$ Millions)	112.6	102.2	93.6	76.8	20.8	19.7	19.1	17.2	16.0	16.2
% Change to Previous Year/Quarter	19.0%	-9.2%	-8.4%	-18.0%	-18.1%	-10.3%	-13.0%	-29.3%	-23.0%	-17.8%
% Change to Previous Quarter					-14.2%	-5.4%	-3.3%	-9.9%	-6.5%	0.9%

Source: Banking Section, Department of Commerce

FIGURE 2 - REMITTANCE

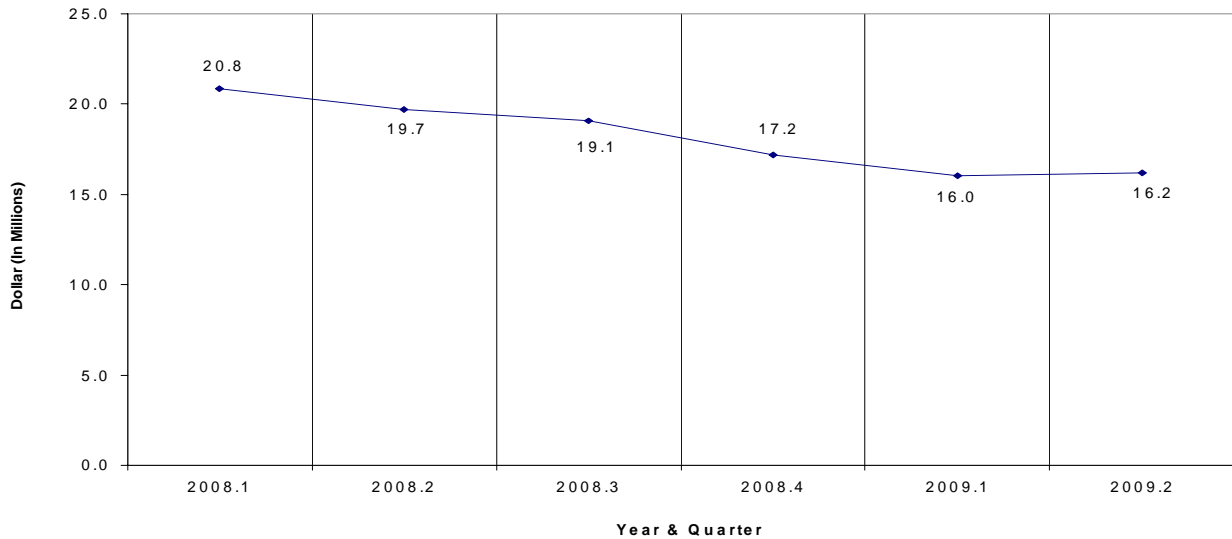


TABLE 3 - AUTO SALES

Auto Sales	Year				Quarter					
	2005	2006	2007	2008	2008.1	2008.2	2008.3	2008.4	2009.1	2009.2
Total Cars Sold	1,885	1,352	1,101	966	300	226	252	188	203	203
% Change to Previous Year/Quarter	-5.4%	-28.2%	-18.6%	-12.3%	9.1%	-13.4%	-12.5%	-32.1%	-32.3%	-10.2%
% Change to Previous Quarter					8.3%	-24.7%	11.5%	-25.4%	8.0%	0.0%
New Cars	1,555	1,000	632	597	190	155	155	97	95	101
Used Cars	330	352	469	369	110	71	97	91	108	102

Source: Commonwealth Auto Dealer's Association (CADA)

FIGURE 3 - AUTO SALES

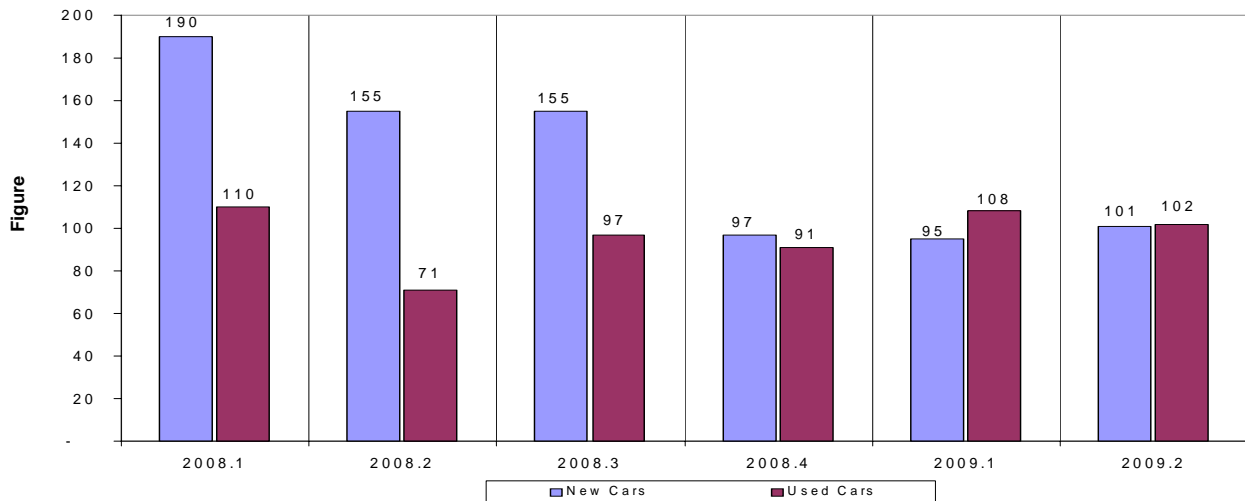


TABLE 4 - VISITOR ARRIVAL

Visitor Arrivals	Year				Quarter					
	2005*	2006	2007	2008	2008.1	2008.2	2008.3	2008.4	2009.1	2009.2
Total Visitors	491,701	435,494	389,261	396,410	110,690	93,939	97,160	95,482	107,434	73,764
% Change to Previous Year/Quarter	-16.55%	-11.43%	-10.62%	1.84%	1.0%	10.0%	-2.5%	0.9%	-2.9%	-21.5%
% Change to Previous Quarter					17.0%	-15.1%	3.4%	-1.7%	12.5%	-31.3%
Japan	351,739	269,780	200,109	201,982	57,099	48,080	53,871	54,249	63,429	38,199
Korea	69,952	82,891	108,321	116,710	29,512	28,284	27,595	25,725	22,513	19,868
U.S. & Guam	37,666	24,579	27,849	32,199	8,800	8,159	7,634	6,471	7,945	7,007
China/Hong Kong	23,410	38,313	40,331	31,095	11,667	4,391	4,885	5,935	8,747	3,792
Philippines	2,381	4,320	5,025	1,960	370	610	420	380	322	507
Russia		1,675	3,671	6,177	1,748	1,588	1,747	1,731	2,352	1,396
Taiwan	2,085	314	445	278	87	72	66	59	106	17
Others Areas*	4,468	6,178	3,510	6,009	1,407	2,755	942	932	2,020	2,978

Source: Marianas Visitors Authority (MVA)

*Note: 2005 includes China/Hong Kong, Philippines, Russia, & Taiwan

FIGURE 4 - VISITOR ARRIVAL

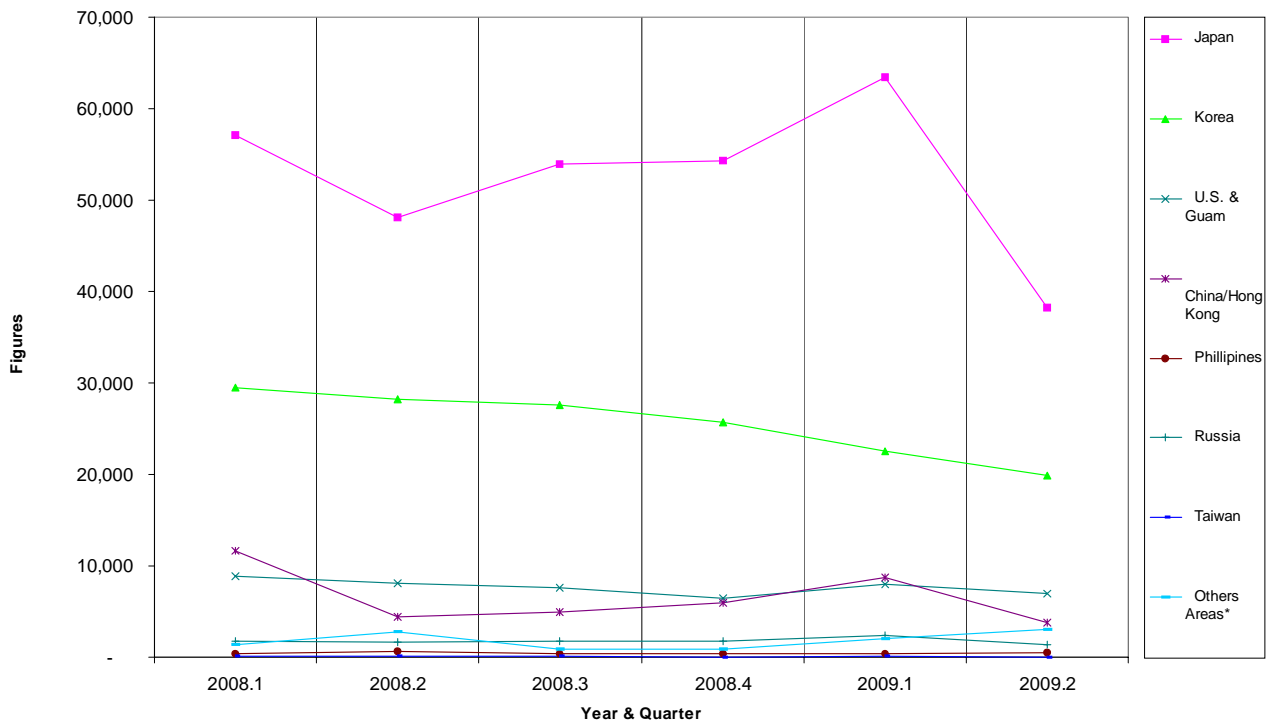


TABLE 5 - AVERAGE CNMI HOTEL DAILY RATE

Hotel Daily Rates	Year				Quarter					
	2005	2006	2007	2008	2008.1	2008.2	2008.3	2008.4	2009.1	2009.2
Average Daily Rates (\$)	83.00	90.00	92.12	97.74	101.10	92.80	101.86	95.19	99.99	91.40
% Change to Previous Year/Quarter	3.8%	8.4%	2.4%	6.1%	5.5%	8.3%	4.7%	6.2%	-1.1%	-1.5%
% Change to Previous Quarter					12.8%	-8.2%	9.8%	-6.5%	5.0%	-8.6%

Source: Hotel Association of the Northern Mariana Islands (HANMI). Data from HANMI members only.

Note: All Percents are Rounded to the Nearest Tenth

FIGURE 5 - AVERAGE CNMI HOTEL DAILY RATE

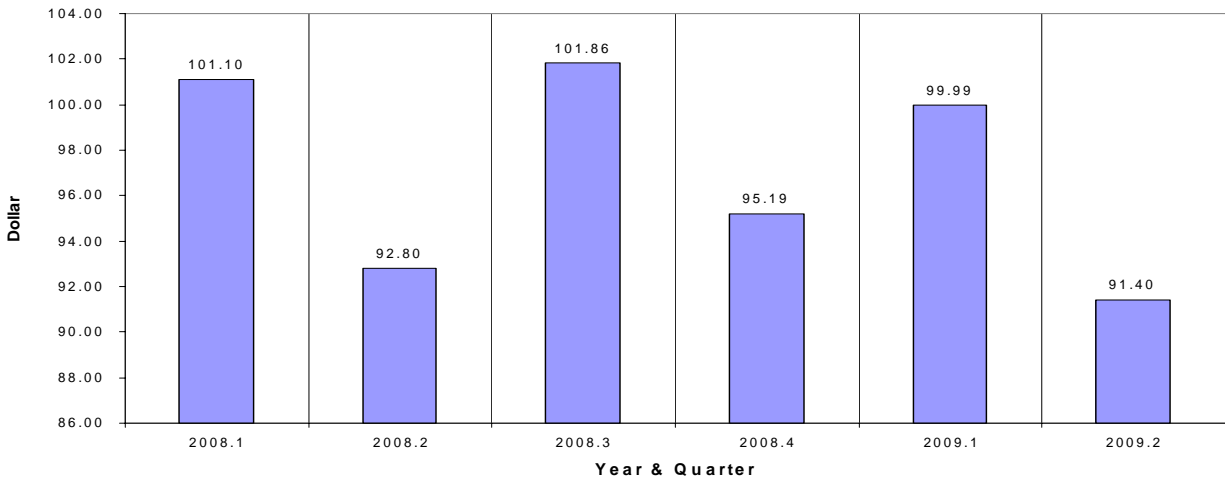


TABLE 6 - AVERAGE CNMI HOTEL OCCUPANCY RATE

Hotel Occupancy Rate	Year				Quarter					
	2005	2006	2007	2008	2008.1	2008.2	2008.3	2008.4	2009.1	2009.2
Hotel Occupancy Rate (%)	70.0%	62.0%	58.9%	61.9%	70.6%	57.0%	59.2%	60.8%	73.2%	50.0%
% Change to Previous Year/Quarter	-3%	-11%	-5%	5%	1.2%	8.8%	3.4%	8.3%	3.7%	-12.2%
% Change to Previous Quarter					25.9%	-19.3%	3.8%	2.7%	20.5%	-31.7%

Source: Hotel Association of the Northern Mariana Islands (HANMI). Data from HANMI members only.

Note: All Percents are Rounded to the Nearest Tenth

FIGURE 6 - AVERAGE CNMI HOTEL OCCUPANCY RATE

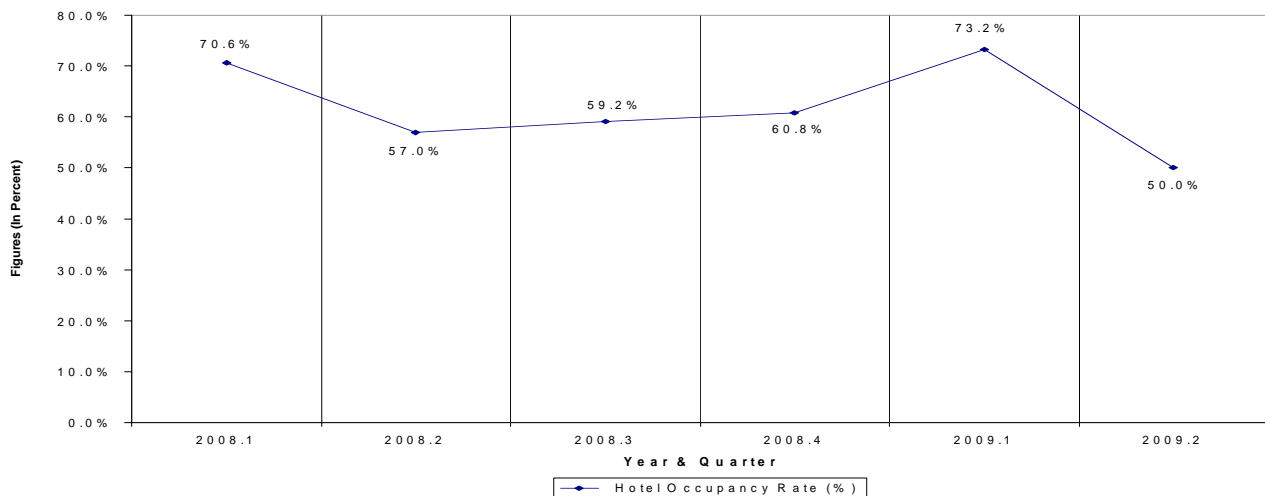


TABLE 7 - BUSINESS GROSS REVENUE (BGR) REPORTED

Business Gross Revenue (BGR)	Year				Quarter					
	2005	2006	2007	2008	2008.1	2008.2	2008.3	2008.4	2009.1	2009.2
BGR Reported* (US \$ Millions)	2,020	1,829	1,672	1,689	416.62	423.96	427.58	420.42	411.48	395.72
% Change to Previous Year/Quarter	-0.7%	-9.5%	-8.6%	1.0%	-8.3%	-0.2%	8.8%	5.2%	-1.2%	-6.7%
% Change to Previous Quarter					4.3%	1.8%	0.9%	-1.7%	-2.1%	-3.8%

Source: Department of Finance

*Estimated based on BGRT and other income tax collections.

FIGURE 7 - BUSINESS GROSS REVENUE (BGR) REPORTED

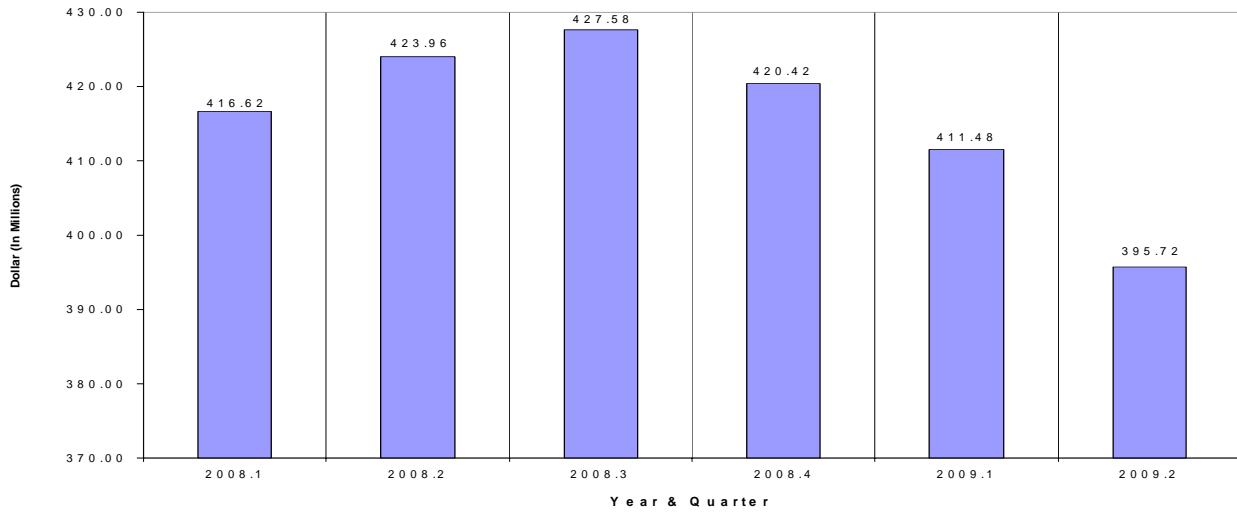


TABLE 8 - GOVERNMENT EXPENDITURES

General Expenditures	Year				Quarter					
	2005	2006	2007	2008	2008.1	2008.2	2008.3	2008.4	2009.1	2009.2
Government Expenditures (US \$ Millions)*	224.10	195.60	162.67	172.24	43.88	46.44	38.12	43.79	39.86	38.27
% Change to Previous Year/Quarter	4.04%	-12.72%	-16.83%	5.88%	3.8%	22.1%	-5.2%	3.9%	-9.2%	-17.6%
% Change to Previous Quarter					4.1%	5.8%	-17.9%	14.9%	-9.0%	-4.0%

Source: Department of Finance

*Note: FY07 - 08 expenditures do not include suspended employer retirement contributions

FIGURE 8 - GOVERNMENT EXPENDITURES

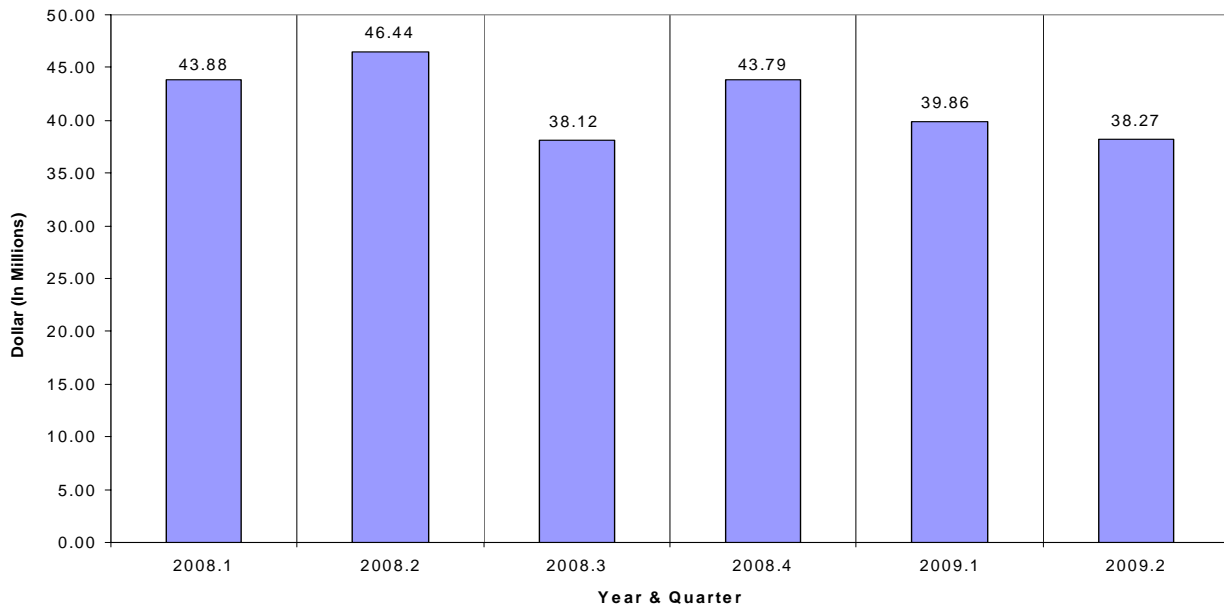


TABLE 9 - GENERAL FUND REVENUE (TAXES AND FEES COLLECTED)

General Fund Revenue (Taxes and Fees Collected)	Year				Quarter					
	2005	2006	2007	2008	2008.1	2008.2	2008.3	2008.4	2009.1	2009.2
Total (US \$ Millions)	210.29	192.03	163.03	162.76	40.016	39.495	47.370	35.877	34.848	32.337
% Change to Previous Year/Quarter	-3.49%	-8.68%	-15.10%	-0.17%	-8.8%	-0.1%	7.1%	1.4%	-12.9%	-18.1%
% Change to Previous Quarter					13.1%	-1.3%	19.9%	-24.3%	-2.9%	-7.2%
Business Gross Receipt	58.29	54.05	49.04	51.78	12.309	12.405	13.387	13.682	12.921	11.193
Wage & Salary	32.68	28.58	26.20	25.05	6.288	6.808	6.245	5.707	5.733	4.893
NMTIT Personal (Chp. 7) / Corp. Income	10.01	15.05	8.34	12.90	2.234	1.985	7.047	1.632	1.920	3.700
Excise	23.88	24.41	20.58	19.72	5.253	5.082	4.973	4.407	4.485	4.396
Hotel Occupancy	6.50	5.54	4.93	5.56	1.676	1.221	1.773	0.890	1.783	1.118
Fuel/Container/Bar	10.24	7.25	6.82	7.28	1.422	1.372	2.337	2.152	2.087	0.557
Garment Certification	24.08	18.06	11.38	3.63	1.759	0.934	0.581	0.360	0.117	0.000
*Fees, Charges, & Other Revenues	44.61	33.81	39.26	33.17	8.830	7.180	10.643	6.518	4.809	6.232
Transfers from Other Funds				7.29	1.242	3.461	1.200	1.382	1.619	1.366
Revenue Transfer to Other Funds			-3.51	-3.62	-0.997	-0.953	-0.816	-0.853	-0.626	-1.118

Source: Department of Finance

*Note: Also Includes "Transfers From Other Funds" for Years 2005 - 2007

FIGURE 9 - GENERAL FUND REVENUE (TAXES AND FEES COLLECTED)

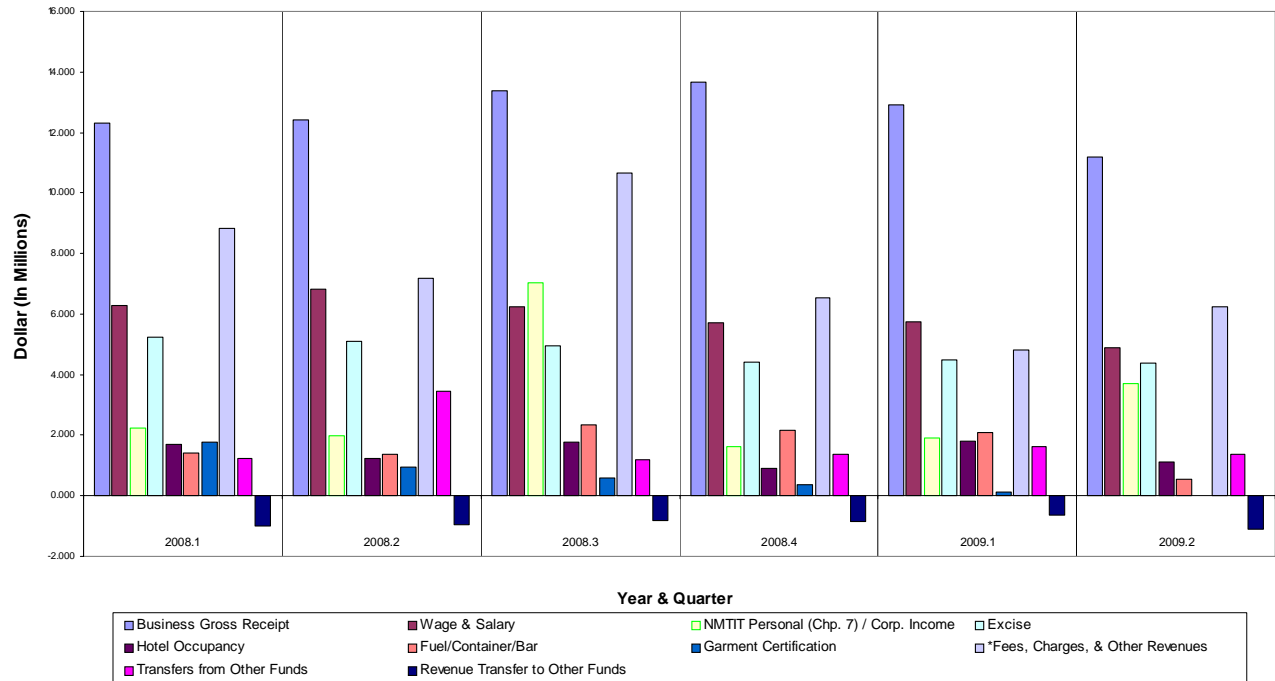


TABLE 10 - IMPORTS

Imports	Year				Quarter					
	2005*	2006	2007	2008	2008.1	2008.2	2008.3	2008.4	2009.1	2009.2
Total Tonnage (In Thousands)	605.50	540.20	439.44	356.35	93.46	99.47	89.27	74.15	79.34	89.21
Petroleum, Oil, Lubricants (P.O.L.)	214.20	203.40	175.99	145.30	38.45	44.90	33.66	28.30	39.09	41.28
Cement	19.20	16.80	27.15	21.31	5.37	7.44	5.67	2.83	1.67	5.86
Garment	112.90	91.50	51.64	12.48	5.69	4.36	1.89	0.54	0.02	0.07
Food Items		62.30	53.53	49.37	12.68	13.23	11.64	11.81	12.20	11.06
Construction Materials		16.60	14.90	16.86	2.80	5.94	5.58	2.54	2.05	3.93
Beverages		23.50	20.66	20.30	5.11	4.90	5.15	5.15	4.65	5.45
Others	259.20	125.90	95.57	90.74	23.36	18.70	25.70	22.98	19.65	21.56

Source: Port of Saipan, Commonwealth Ports Authority (CPA)

*Note: Others include Food, Construction Materials & Beverages for 2005

FIGURE 10 - IMPORTS (IN THOUSANDS)

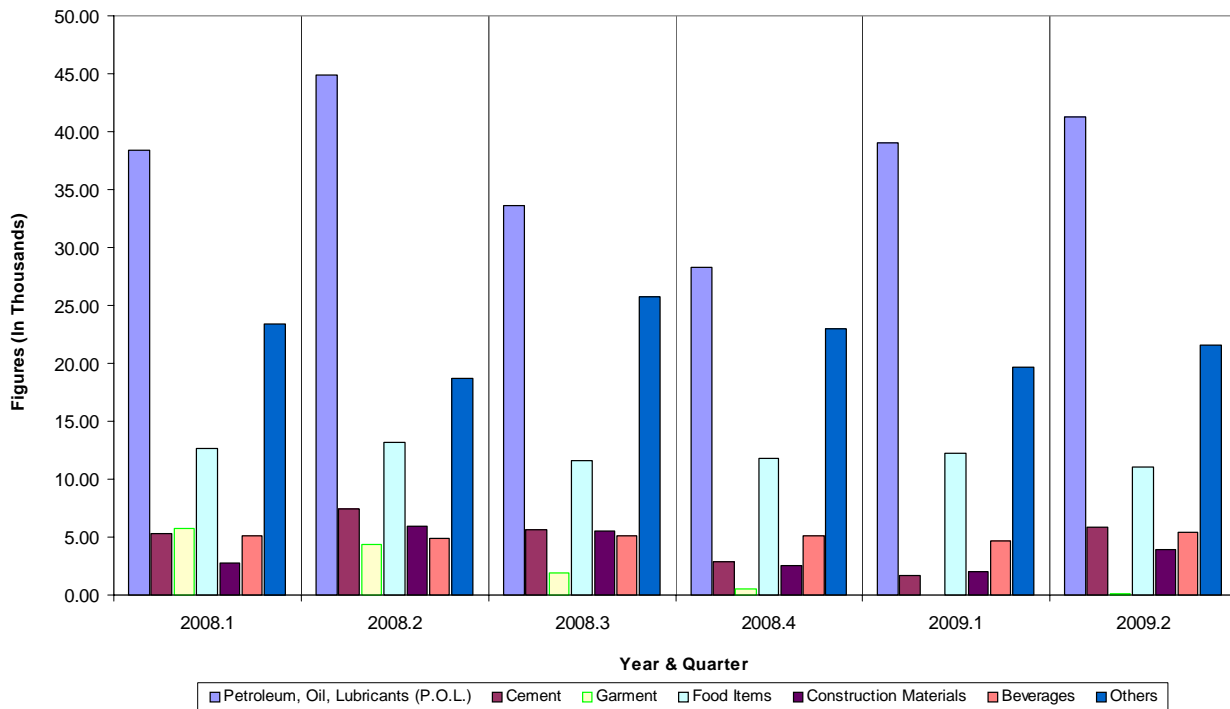


TABLE 11 - EXPORTS

Exports	Year				Quarter					
	2005	2006	2007	2008	2008.1	2008.2	2008.3	2008.4	2009.1	2009.2
Garment Exports Value (US \$ Millions)*	650.80	486.50	307.57	98.22	47.54	25.24	15.70	9.73	3.14	0.00
% Change to Previous Year/Quarter	-21.21%	-25.25%	-36.78%	-68.07%	-53.34%	-67.11%	-78.07%	-83.02%	-93.41%	-100.00%
% Change to Previous Quarter					-17.03%	-46.90%	-37.79%	-38.04%	-67.78%	-100.00%

Source: Department of Finance

*Note: Estimated Based on Garment Certification Fee Collection

FIGURE 11 - EXPORTS (IN MILLIONS)

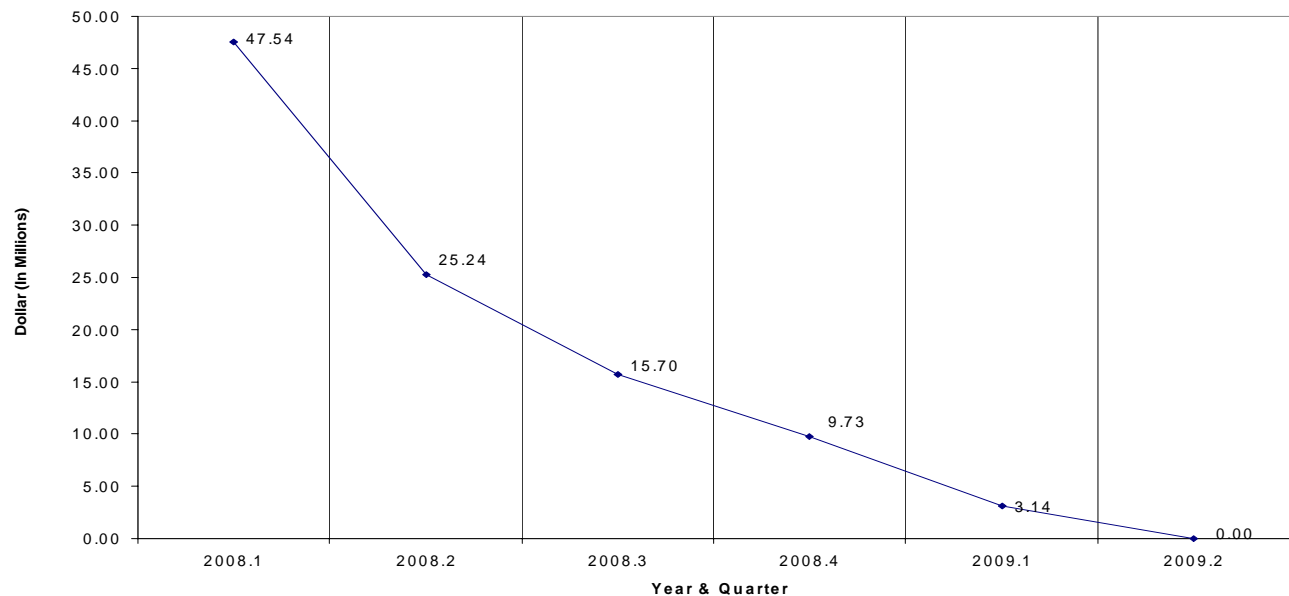


TABLE 12 - TELEPHONE LINES

Telephone Lines	Year				Quarter					
	2005	2006	2007	2008	2008.1	2008.2	2008.3	2008.4	2009.1	2009.2
Total Telephone Lines	31,752	30,684	28,963	30,458	28,631	29,528	29,487	30,458	30,129	29,526
% Change to Previous Year/Quarter	0.7%	-3.4%	-5.6%	5.2%	-4.4%	-0.5%	1.1%	5.2%	5.2%	0.0%
% Change to Previous Quarter					-1.1%	3.1%	-0.1%	3.3%	-1.1%	-2.0%
Total Commercial Phone Lines	20,551	20,592	20,001	22,155	19,845	20,867	21,033	22,155	21,997	21,537
% Change to Previous Year/Quarter	4.2%	0.20%	-2.9%	10.8%	-1.3%	3.6%	5.2%	10.8%	10.8%	3.2%
% Change to Previous Quarter					-0.8%	5.1%	0.8%	5.3%	-0.7%	-2.1%
Saipan	10,668	9,737	8,689	8,238	8,552	8,474	8,285	8,238	7,966	7,920
Tinian	435	387	376	366	381	372	362	366	361	363
Rota	466	428	410	385	395	395	388	385	376	377
Special Access	8,982	10,040	10,526	13,166	10,517	11,626	11,998	13,166	13,294	12,877
Total Residential Phone Lines	11,201	10,092	8,962	8,303	8,786	8,661	8,454	8,303	8,132	7,989
% Change to Previous Year/Quarter	-5.1%	-9.90%	-11.2%	-7.4%	-10.6%	-9.3%	-7.9%	-7.4%	-7.4%	-7.8%
% Change to Previous Quarter					-2.0%	-1.4%	-2.4%	-1.8%	-2.1%	-1.8%
Saipan	10,178	9,096	8,045	7,414	7,896	7,756	7,550	7,414	7,271	7,131
Tinian	499	492	458	439	443	448	450	439	429	419
Rota	524	504	459	450	447	457	454	450	432	439

Source: Island Telecom & Engineering (IT&E)

FIGURE 12.1 - COMMERCIAL PHONE LINES BY ISLAND

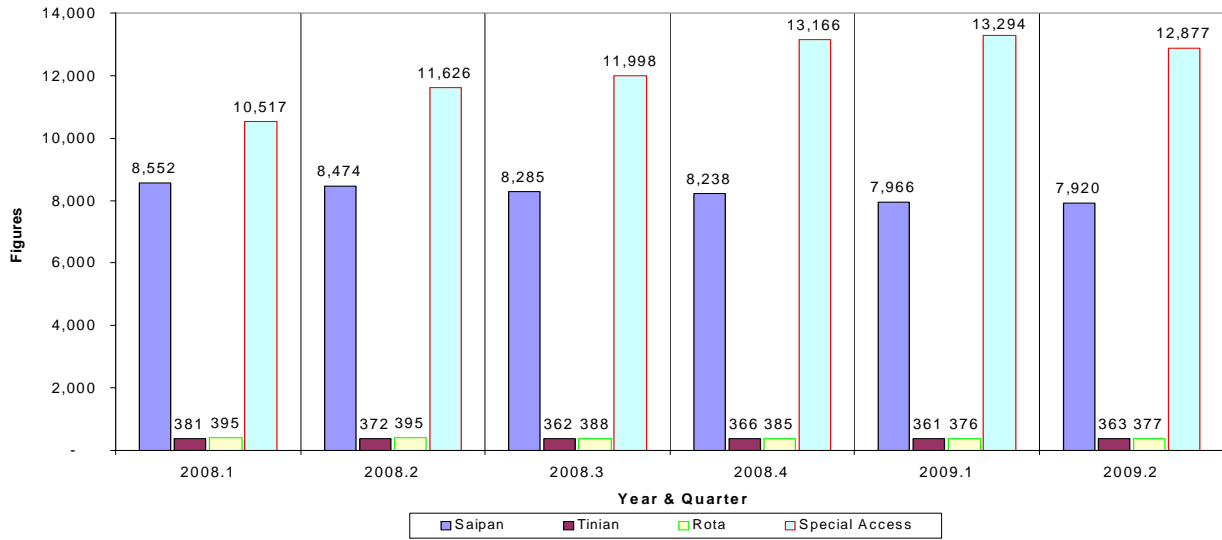


FIGURE 12.2 - RESIDENTIAL PHONE LINES BY ISLAND

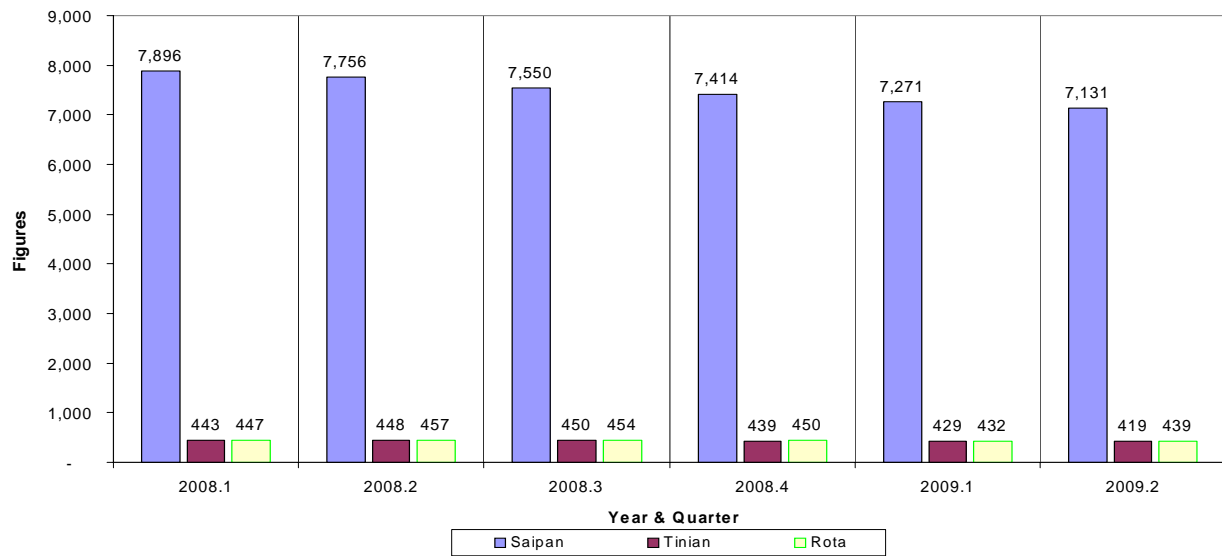


FIGURE 12.3 - COMMERCIAL & RESIDENTIAL PHONE LINES (TOTALS)

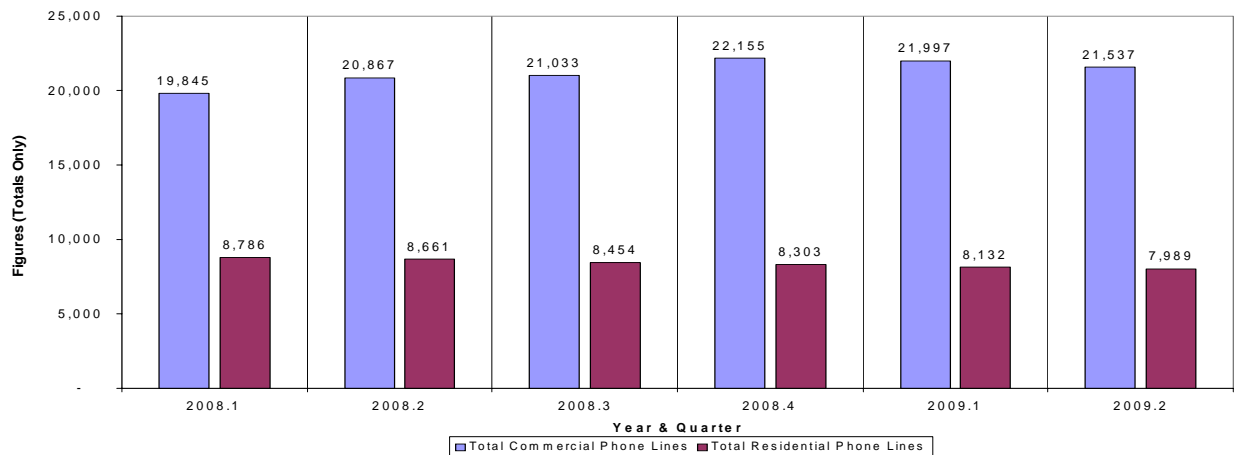


TABLE 13 - BUILDING PERMITS

CNMI Building Permits Issued	Year				Quarter					
	2005	2006	2007	2008	2008.1	2008.2	2008.3	2008.4	2009.1	2009.2
Total No. of Permits	350	292	255	213	57	57	56	43	33	39
No. of Commercial	164	125	121	106	31	24	24	27	15	21
No. of Residential	186	167	120	98	25	26	32	15	11	14
No. of Government*			14	9	1	7	0	1	7	4
Total Value (US \$ Millions)	28.89	11.79	16.23	43.99	4.94	12.26	14.76	12.03	2.33	10.14
Commercial	19.94	3.59	8.96	36.40	3.06	9.33	12.76	11.25	0.74	0.80
Residential	8.95	7.74	5.06	5.12	1.59	0.75	2.00	0.77	1.00	0.85
Government*			2.21	2.47	0.30	2.18	0.00	0.00	0.59	8.49

Source: Building Safety Code Division, Department of Public Works
 *Recent Addition to 2007

FIGURE 13.1 - NUMBER OF BUILDING PERMITS ISSUED

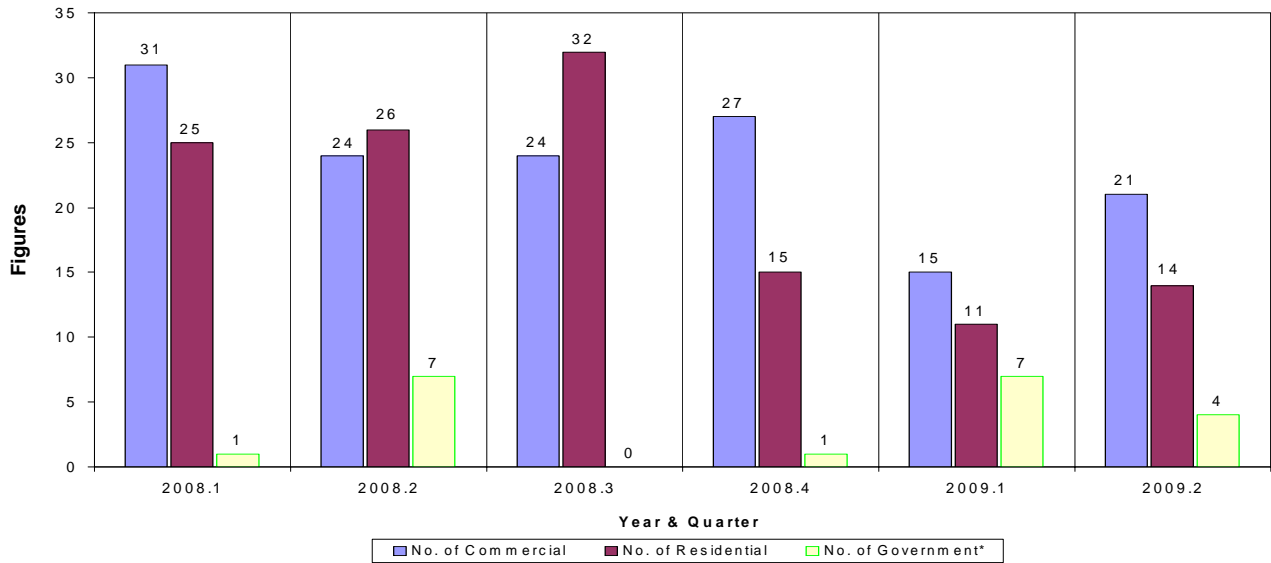


FIGURE 13.2 - VALUES OF BUILDING PERMITS ISSUED (IN MILLIONS)

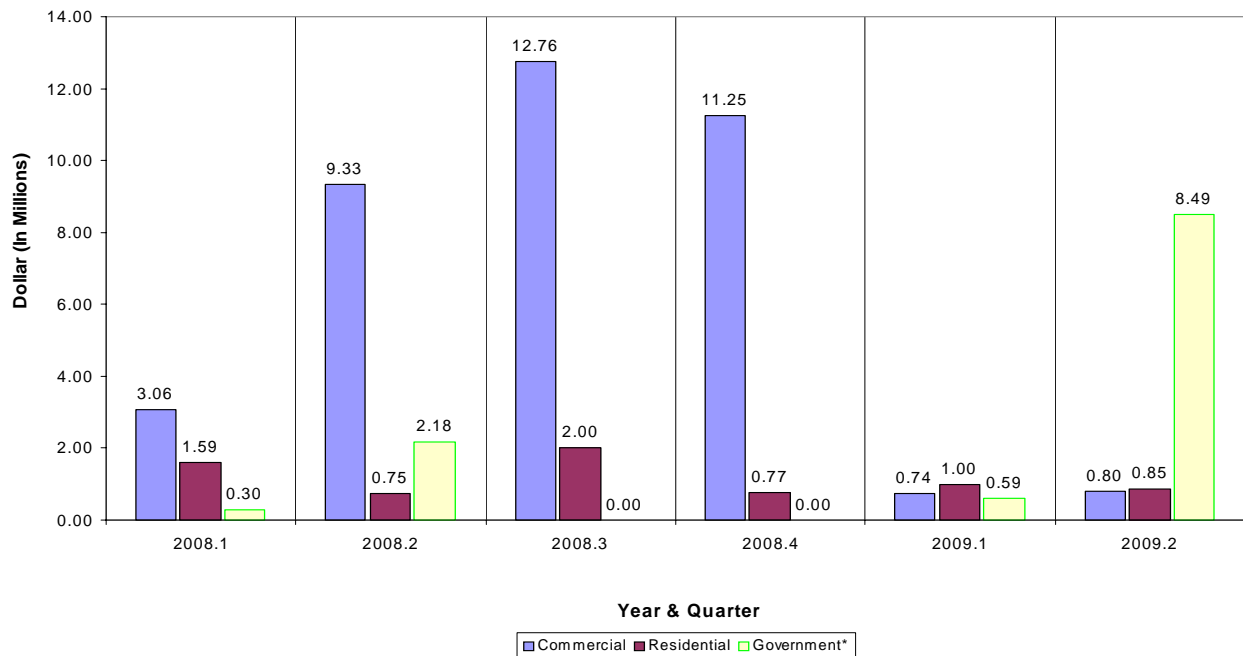


TABLE 14 - CNMI CONSUMER PRICE INDEX (CPI)
COMMONWEALTH OF THE NORTHERN MARIANA ISLANDS
4th Quarter 2008 = 100

Groups	2nd Qtr 2009	1st Qtr 2009	2nd Qtr 2008	To 2nd Qtr09 fm 1st Qtr09	To 2nd Qtr09 fm 2nd Qtr 08
All Items	101.5	100.2	100.3	1.3	1.2
Food	101.6	100.6	94.6	1.0	6.9
Alcoholic Beverages	106.5	106.5	102.8	0.0	3.5
Housing and Utilities	101.3	99.8	105.8	1.5	-4.5
Apparel	100.8	99.8	99.9	1.0	0.9
Transportation	103.4	100.5	98.8	2.9	4.5
Medical Care	102.8	102.8	99.8	0.0	2.9
Recreation	102.1	100.2	101.7	1.9	0.4
Education and Communication	99.7	96.4	99.2	3.5	0.5
Other Goods and Services	101.7	101.7	92.9	0.0	8.7

Source: Department of Commerce, Central Statistics Division

TABLE 15 - CNMI CONSUMER PRICE FOR 9 SELECTED GROUPS
COMMONWEALTH OF THE NORTHERN MARIANA ISLANDS
1st Quarter 2003 / 4th Quarter 2008 = 100

Year & Quarter	All Items	Food	Alcoholic Beverages	Housing Utilities	Apparel	Transportation	Medical Care	Recreation	Education and Communication	Other Goods & Services
2003.1	83.0	84.2	95.9	65.5	98.6	95.7	92.5	101.9	98.7	92.9
2003.2	82.9	84.4	96.1	65.5	98.8	95.4	92.5	101.2	98.5	92.9
2003.3	82.8	84.7	95.9	65.0	99.6	95.4	92.5	101.0	98.9	92.9
2003.4	82.6	84.6	95.8	64.1	99.1	96.2	92.5	98.2	98.3	92.9
2004.1	83.2	86.8	95.8	64.4	99.5	96.2	92.5	97.5	98.2	92.9
2004.2	83.7	87.6	95.6	64.0	98.4	96.6	92.5	103.5	98.3	100.6
2004.3	83.4	88.6	96.0	63.8	94.2	95.7	92.5	100.8	97.4	100.6
2004.4	84.0	90.4	95.8	64.2	91.3	95.9	92.5	100.5	99.6	100.6
2005.1	84.1	90.0	95.9	64.3	96.6	96.3	92.5	100.7	96.7	100.6
2005.2	89.9	85.5	103.3	66.3	96.9	92.4	93.2	101.9	100.2	91.4
2005.3	83.0	84.3	96.3	65.7	98.7	92.2	92.8	102.0	98.3	94.2
2005.4	83.0	84.7	95.5	65.6	100.8	95.2	92.5	101.7	99.5	93.9
2006.1	83.0	85.3	96.8	65.7	100.1	109.1	92.8	108.6	101.7	93.6
2006.2	83.0	84.4	96.1	65.5	99.6	96.2	92.5	101.9	99.4	92.9
2006.3	83.0	93.7	97.1	65.5	137.8	96.2	92.5	101.9	100.9	92.9
2006.4	83.0	94.0	98.1	65.5	138.6	96.0	92.5	101.9	97.8	93.3
2007.1	93.3	88.3	99.6	92.3	100.4	95.7	92.5	102.2	99.5	92.9
2007.2	94.4	89.4	99.6	94.6	100.7	95.7	93.5	102.3	99.3	92.9
2007.3	94.4	89.6	99.6	94.7	100.9	95.7	93.5	102.8	99.3	92.9
2007.4	94.7	90.4	100.0	94.9	100.9	95.7	93.5	103.0	99.3	92.9
2008.1	94.7	94.3	102.0	92.3	101.0	95.7	99.8	104.4	99.2	92.9
2008.2	100.3	94.6	102.8	105.8	99.9	98.8	99.8	101.7	99.2	92.9
2008.3	99.8	97.7	99.2	104.3	99.4	92.3	96.7	100.0	99.5	100.0
2008.4	100.0	100.0	100.0	100.0	100.0	100.0	100.0	100.0	100.0	100.0
2009.1	100.2	100.6	106.5	99.8	99.8	100.5	102.8	100.2	96.4	101.7
2009.2	101.5	101.6	106.5	101.3	100.8	103.4	102.8	102.1	99.7	101.7

Source: Central Statistics Division, Department of Commerce

TABLE 16 - HISTORICAL CPIs FOR SELECTED GROUPS

COMMONWEALTH OF THE NORTHERN MARIANA ISLANDS
1st Quarter 2003 / 4th Quarter 2008 = 100

Year & Quarter	Food	Alcoholic Beverages	Housing Utilities	Apparel	Transportation	Medical Care	Recreation	Education Communication	Other Goods & Services	All Items
Wgts	19.02	1.72	27.73	2.24	33.52	2.36	2.44	5.68	5.30	100.0
2000.1	93.7		67.5	107.0	92.8	78.0				82.4
2000.2	92.6		67.8	105.9	94.9	85.6				84.5
2000.3	94.4		68.6	106.4	97.0	86.1				85.7
2000.4	91.7		66.0	106.5	97.1	85.7				84.1
2001.1	88.2		66.4	106.5	96.8	85.3				83.2
2001.2	90.4		66.3	106.0	96.3	85.3				83.5
2001.3	89.9		68.2	106.0	95.9	85.2				83.6
2001.4	90.7		67.0	106.9	94.5	85.0				83.6
2002.1	89.2		67.3	105.7	95.2	90.6				84.8
2002.2	87.3		64.4	106.4	96.6	90.3				83.7
2002.3	86.1		66.3	106.2	96.6	90.4				83.7
2002.4	83.8		65.7	100.1	96.9	90.4				82.5
2003.1	84.2	95.9	65.5	98.6	95.7	92.5	101.9	98.7	92.9	83.0
2003.2	84.4	96.1	65.5	98.8	95.4	92.5	101.2	98.5	92.9	82.9
2003.3	84.7	95.9	65.0	99.6	95.4	92.5	101.0	98.9	92.9	82.8
2003.4	84.6	95.8	64.1	99.1	96.2	92.5	98.2	98.3	92.9	82.6
2004.1	86.8	95.8	64.4	99.5	96.2	92.5	97.5	98.2	92.9	83.2
2004.2	87.6	95.6	64.0	98.4	96.6	92.5	103.5	98.3	100.6	83.7
2004.3	88.6	96.0	63.8	94.2	95.7	92.5	100.8	97.4	100.6	83.4
2004.4	90.4	95.8	64.2	91.3	95.9	92.5	100.5	99.6	100.6	84.0
2005.1	90.0	95.9	64.3	96.6	96.3	92.5	100.7	96.7	100.6	84.1
2005.2	85.5	103.3	66.3	96.9	92.4	93.2	101.9	100.2	91.4	89.9
2005.3	84.3	96.3	65.7	98.7	92.2	92.8	102.0	98.3	94.2	83.0
2005.4	84.7	95.5	65.6	100.8	95.2	92.5	101.7	99.5	93.9	83.0
2006.1	85.3	96.8	65.7	100.1	109.1	92.8	108.6	101.7	93.6	83.0
2006.2	84.4	96.1	65.5	99.6	96.2	92.5	101.9	99.4	92.9	83.0
2006.3	93.7	97.1	65.5	137.8	96.2	92.5	101.9	100.9	92.9	83.0
2006.4	94.0	98.1	65.5	138.6	96.0	92.5	101.9	97.8	93.3	83.0
2007.1	88.3	99.6	92.3	100.4	95.7	92.5	102.2	99.5	92.9	93.3
2007.2	89.4	99.6	94.6	100.7	95.7	93.5	102.3	99.3	92.9	94.4
Year & Quarter	Food	Alcoholic Beverages	Housing Utilities	Apparel	Transportation	Medical Care	Recreation	Education Communication	Other Goods & Services	All Items
Wgts	19.02	1.72	27.73	2.24	33.52	2.36	2.44	5.68	5.30	100.0
2007.3	89.6	99.6	94.7	100.9	95.7	93.5	102.8	99.3	92.9	94.4
2007.4	90.4	100.0	94.9	100.9	95.7	93.5	103.0	99.3	92.9	94.7
2008.1	94.3	102.0	92.3	101.0	95.7	99.8	104.4	99.2	92.9	94.7
2008.2	94.6	102.8	105.8	99.9	98.8	99.8	101.7	99.2	92.9	100.3
2008.3	97.7	99.2	104.3	99.4	92.3	96.7	100.0	99.5	100.0	99.8
2008.4	100.0	100.0	100.0	100.0	100.0	100.0	100.0	100.0	100.0	100.0
2009.1	100.6	106.5	99.8	99.8	100.5	102.8	100.2	96.4	101.7	100.2
2009.2	101.6	106.5	101.3	100.8	103.4	102.8	102.1	99.7	101.7	101.5

1 The previous Consumer Price Index had only 5 major groups rather than the 9 that are in the revised CPI. Nevertheless, these historical CPIs will provide users with some indication of historical price movement of the CPI.

Source: Central Statistics Division, Department of Commerce

LIST OF CONTRIBUTORS

Agency		Contact Number
Commonwealth Auto-Dealer Association	CADA	234-5911
Commonwealth Ports Authority	CPA	664-3555/3553
Department of Commerce	DOC	664-3044/3023
Department of Finance	DOF	664-1186
Department of Public Works	DPW	234-2726
Hotel Association of Northern Mariana Islands	HANMI	233-3773/6964
Marianas Visitor Authority	MVA	664-3230
Island Telecom & Engineering	IT&E	682-2612