



# ECONOMIC INDICATOR

A QUARTERLY REPORT

January - March 2010



DEPARTMENT OF COMMERCE  
COMMONWEALTH OF THE NORTHERN MARIANA ISLANDS  
CALLER BOX 10007 CK  
SAIPAN, MP. 96950  
TEL NO: (670) 664 - 3000

## MESSAGE FROM THE SECRETARY

We are pleased to present the First Quarter issue of the Economic Indicator, depicting the social and economic conditions of the Commonwealth of the Northern Mariana Islands (CNMI), covering January through March 2010.

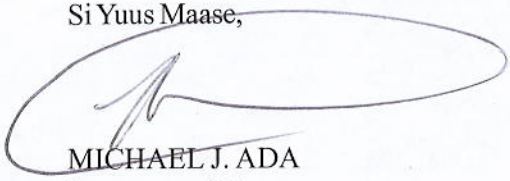
This publication is made possible by data researched and tabulated under the Central Statistics Division, Department of Commerce, and with contributions from other CNMI Government departments and agencies, as well as inputs from private organizations.

Other reports published by the Department of Commerce may be accessed at:

**[www.commerce.gov.mp](http://www.commerce.gov.mp)**

We are committed to providing you, the public, business community, and leaders of the CNMI this quarterly issue for whatever purpose it may serve you. Moreover, we are grateful to all those who contributed to the successful compilation of this report and look forward to working closely together to ensure that future issues are published on time. We invite and welcome any suggestions or comments that may improve our quarterly publications. Please send your thoughts to our office.

Si Yuus Maase,



MICHAEL J. ADA  
Secretary of Commerce

# Table of Contents

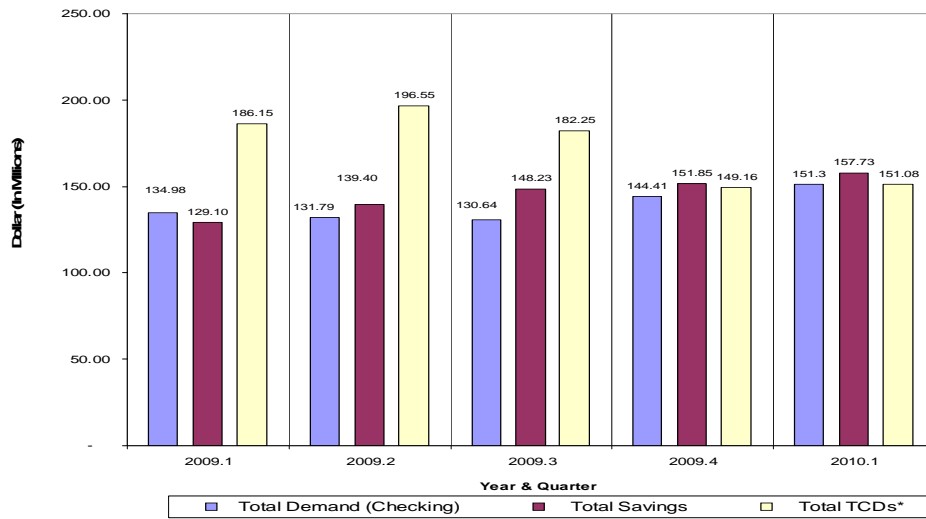
<b>TABLE 1 - BANKING ACTIVITY</b> .....	<b>4</b>
<b>FIGURE 1.1 - BANKING ACTIVITY - DEPOSITS</b> .....	<b>4</b>
<b>FIGURE 1.2 - BANKING ACTIVITY - LOANS</b> .....	<b>4</b>
<b>TABLE 2 - REMITTANCE</b> .....	<b>5</b>
<b>FIGURE 2 - REMITTANCE</b> .....	<b>5</b>
<b>FIGURE 3 - AUTO SALES</b> .....	<b>5</b>
<b>TABLE 3 - AUTO SALES</b> .....	<b>5</b>
<b>TABLE 4 - VISITOR ARRIVAL</b> .....	<b>6</b>
<b>FIGURE 4 - VISITOR ARRIVAL</b> .....	<b>6</b>
<b>TABLE 5 - AVERAGE CNMI HOTEL DAILY RATE</b> .....	<b>7</b>
<b>FIGURE 5 - AVERAGE CNMI HOTEL DAILY RATE</b> .....	<b>7</b>
<b>TABLE 6 - AVERAGE CNMI HOTEL OCCUPANCY RATE</b> .....	<b>7</b>
<b>FIGURE 6 - AVERAGE CNMI HOTEL OCCUPANCY RATE</b> .....	<b>7</b>
<b>TABLE 7 - BUSINESS GROSS REVENUE (BGR) REPORTED</b> .....	<b>8</b>
<b>FIGURE 7 - BUSINESS GROSS REVENUE (BGR) REPORTED</b> .....	<b>8</b>
<b>TABLE 8 - GOVERNMENT EXPENDITURES</b> .....	<b>8</b>
<b>FIGURE 8 - GOVERNMENT EXPENDITURES</b> .....	<b>8</b>
<b>TABLE 9 - GENERAL FUND REVENUE (TAXES AND FEES COLLECTED)</b> .....	<b>9</b>
<b>FIGURE 9 - GENERAL FUND REVENUE (TAXES AND FEES COLLECTED)</b> .....	<b>9</b>
<b>TABLE 10 - IMPORTS</b> .....	<b>10</b>
<b>FIGURE 10 - IMPORTS (IN THOUSANDS)</b> .....	<b>10</b>
<b>TABLE 12 - TELEPHONE LINES</b> .....	<b>11</b>
<b>FIGURE 12.1 - COMMERCIAL PHONE LINES BY ISLAND</b> .....	<b>11</b>
<b>FIGURE 12.2 - RESIDENTIAL PHONE LINES BY ISLAND</b> .....	<b>12</b>
<b>FIGURE 12.3 - COMMERCIAL &amp; RESIDENTIAL PHONE LINES (TOTALS)</b> .....	<b>12</b>
<b>TABLE 13 - BUILDING PERMITS</b> .....	<b>13</b>
<b>FIGURE 13.1 - NUMBER OF BUILDING PERMITS ISSUED</b> .....	<b>13</b>
<b>FIGURE 13.2 - VALUES OF BUILDING PERMITS ISSUED (IN MILLIONS)</b> .....	<b>13</b>
<b>TABLE 14 - CNMI CONSUMER PRICE INDEX (CPI) 3RD QUARTER</b> .....	<b>14</b>
<b>TABLE 15 - CNMI CONSUMER PRICE INDEX (CPI) 4TH QUARTER</b> .....	<b>14</b>
<b>TABLE 16 - HISTORICAL CPIs FOR SELECTED GROUPS</b> .....	<b>15</b>
<b>LIST OF CONTRIBUTORS</b> .....	<b>16</b>

# TABLE 1 - BANKING ACTIVITY

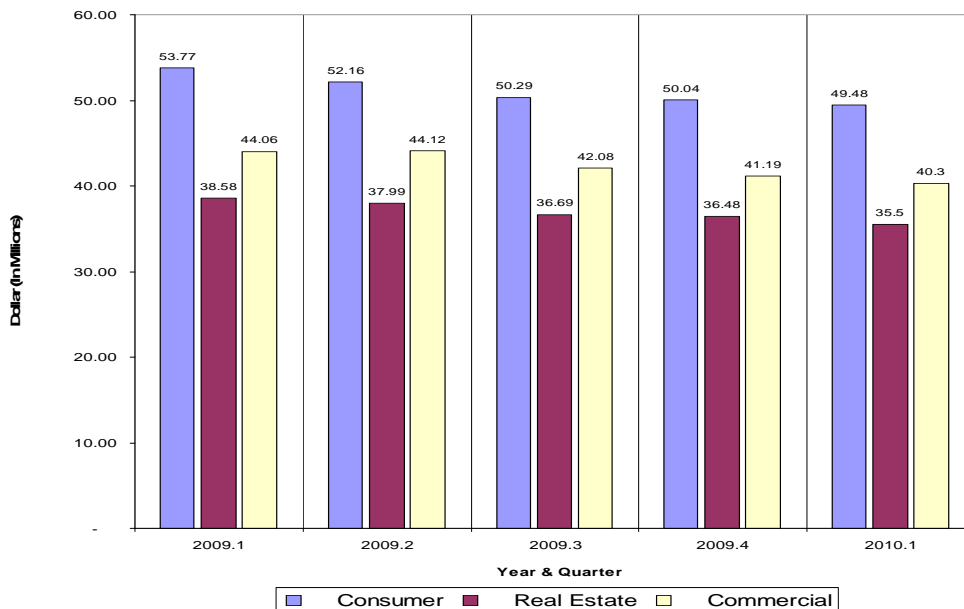
Banking Activity (US \$ Millions)	Year				Quarter				
	2006	2007	2008	2009	2009.1	2009.2	2009.3	2009.4	2010.1
<b>Total Deposits</b>	<b>517.90</b>	<b>531.20</b>	<b>446.34</b>	<b>445.42</b>	<b>450.23</b>	<b>467.74</b>	<b>461.12</b>	<b>445.42</b>	<b>460.11</b>
Total Demand (Checking)	143.10	156.85	140.24	144.41	134.98	131.79	130.64	144.41	151.3
Total Savings	159.70	143.25	114.10	151.85	129.10	139.40	148.23	151.85	157.73
Total TCDs*	215.10	231.10	192.00	149.16	186.15	196.55	182.25	149.16	151.08
<b>Total Loans</b>	<b>180.80</b>	<b>161.61</b>	<b>144.65</b>	<b>127.71</b>	<b>136.42</b>	<b>134.26</b>	<b>129.06</b>	<b>127.71</b>	<b>125.27</b>
Consumer	74.10	65.30	58.16	50.04	53.77	52.16	50.29	50.04	49.48
Real Estate	45.90	42.33	40.62	36.48	38.58	37.99	36.69	36.48	35.5
Commercial	60.80	53.97	45.88	41.19	44.06	44.12	42.08	41.19	40.3
<b>Loan to Deposit Ratio</b>	<b>34.9%</b>	<b>30.4%</b>	<b>32.4%</b>	<b>28.7%</b>	<b>30.3%</b>	<b>28.7%</b>	<b>28.0%</b>	<b>28.7%</b>	<b>27.2%</b>

Source: Banking Section, Department of Commerce  
 \*Includes Cashiers Checks

### FIGURE 1.1 - BANKING ACTIVITY - DEPOSITS



### FIGURE 1.2 - BANKING ACTIVITY - LOANS

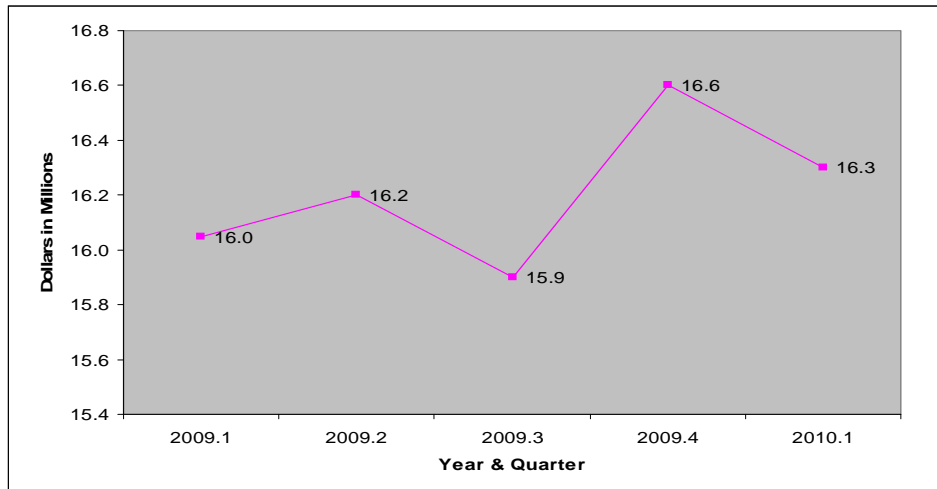


## TABLE 2 - REMITTANCE

Remittances	Year					Quarter				
	2005	2006	2007	2008	2009	2009.1	2009.2	2009.3	2009.4	2010.1
Remittances (US \$ Millions)	112.6	102.2	93.6	83.9	16.6	16.0	16.2	15.9	16.6	16.3
% Change to Previous Year/Quarter	19.0%	-9.2%	-8.4%	-10.4%	-80.2%	-23.0%	-17.8%	-16.6%	-3.3%	1.6%
% Change to Previous Quarter						-6.5%	0.9%	-1.9%	4.4%	-1.8%

Source: Banking Section, Department of Commerce

## FIGURE 2 - REMITTANCE

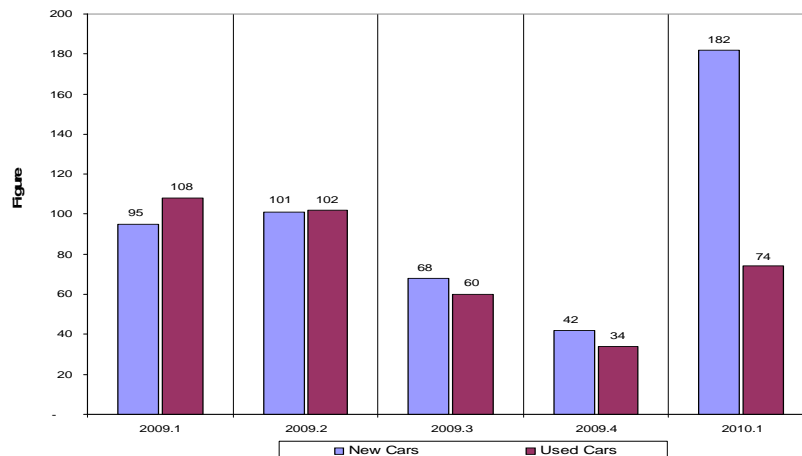


## TABLE 3 - AUTO SALES

Auto Sales	Year					Quarter				
	2005	2006	2007	2008	2009	2009.1	2009.2	2009.3	2009.4	2010.1
Total Cars Sold	1,885	1,352	1,101	1,055	846	203	203	128	76	256
% Change to Previous Year/Quarter	-5.4%	-28.2%	-18.6%	-4.2%	-19.8%	-32.3%	-10.2%	-49.2%	-59.6%	26.1%
% Change to Previous Quarter						8.0%	0.0%	-36.9%	-40.6%	236.8%
New Cars	1,555	1,000	632	637	448	95	101	68	42	182
Used Cars	330	352	469	418	398	108	102	60	34	74

Source: Commonwealth Auto Dealer's Association (CADA)

## FIGURE 3 - AUTO SALES



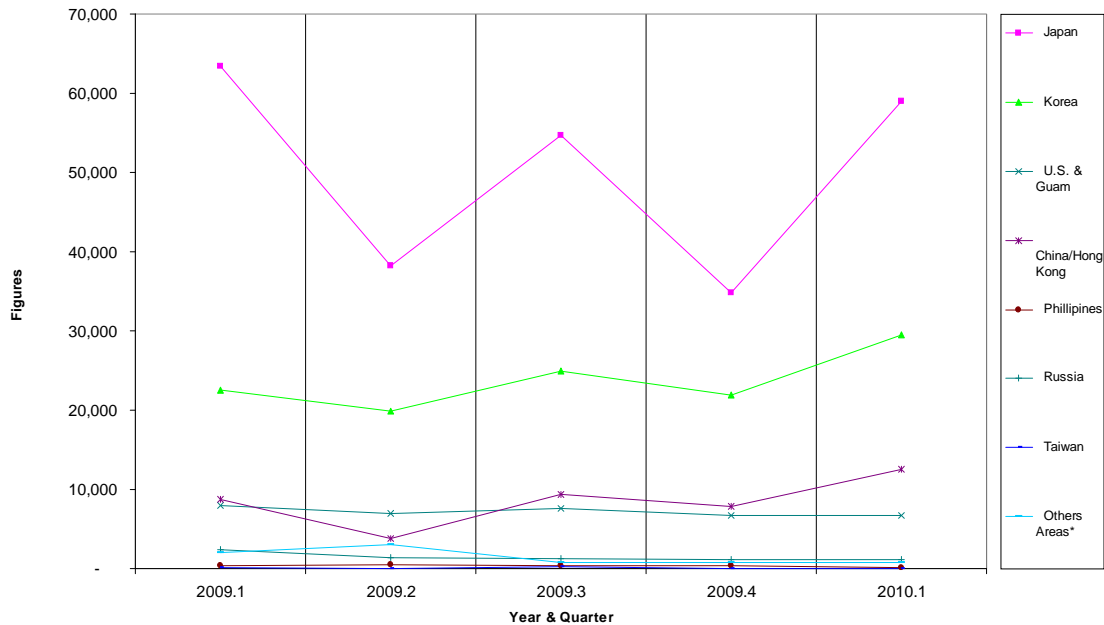
# TABLE 4 - VISITOR ARRIVAL

Visitor Arrivals	Year					Quarter				
	2005*	2006	2007	2008	2009	2009.1	2009.2	2009.3	2009.4	2010.1
<b>Total Visitors</b>	<b>491,701</b>	<b>435,494</b>	<b>389,261</b>	<b>396,410</b>	<b>373,840</b>	<b>107,434</b>	<b>73,764</b>	<b>99,128</b>	<b>73,630</b>	<b>109,786</b>
% Change to Previous Year/Quarter	-16.55%	-11.43%	-10.62%	1.84%	-3.96%	-2.9%	-21.5%	2.0%	-22.9%	2.2%
% Change to Previous Quarter						12.5%	-31.3%	34.4%	-25.7%	49.1%
<b>Japan</b>	351,739	269,780	200,109	201,982	209,748	63,429	38,199	54,690	34,793	58,974
<b>Korea</b>	69,952	82,891	108,321	116,710	95,701	22,513	19,868	24,889	21,862	29,498
<b>U.S. &amp; Guam</b>	37,666	24,579	27,849	32,199	29,057	7,945	7,007	7,544	6,763	6,706
<b>China/Hong Kong</b>	23,410	38,313	40,331	31,095	23,359	8,747	3,792	9,385	7,890	12,547
<b>Philippines</b>	2,381	4,320	5,025	1,960	1,629	322	507	360	402	129
<b>Russia</b>		1,675	3,671	6,177	7,226	2,352	1,396	1,322	1,152	1,164
<b>Taiwan</b>	2,085	314	445	278	248	106	17	235	60	21
<b>Others Areas*</b>	4,468	6,178	3,510	6,009	6,872	2,020	2,978	703	708	747

Source: Marianas Visitors Authority (MVA)

\*Note: 2005 includes China/Hong Kong, Philippines, Russia, & Taiwan

## FIGURE 4 - VISITOR ARRIVAL

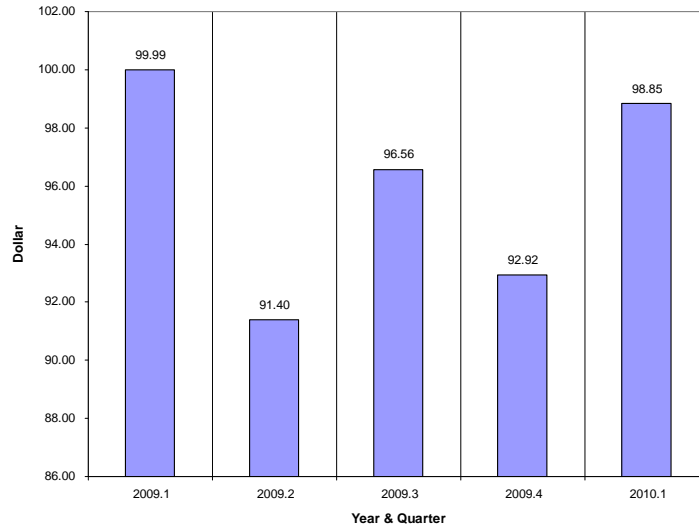


### TABLE 5 - AVERAGE CNMI HOTEL DAILY RATE

Hotel Daily Rates	Year					Quarter				
	2005	2006	2007	2008	2009	2009.1	2009.2	2009.3	2009.4	2010.1
<b>Average Daily Rates (\$)</b>	83.00	90.00	92.12	96.35	97.11	99.99	91.40	96.56	92.92	98.85
% Change to Previous Year/Quarter	3.8%	8.4%	2.4%	4.6%	0.8%	-1.1%	-1.5%	-5.2%	-2.4%	-1.1%
% Change to Previous Quarter						5.0%	-8.6%	5.6%	-3.8%	6.4%

Source: Hotel Association of the Northern Mariana Islands (HANMI). Data from HANMI members only.  
 Note: All Percents are Rounded to the Nearest Tenth

### FIGURE 5 - AVERAGE CNMI HOTEL DAILY RATE

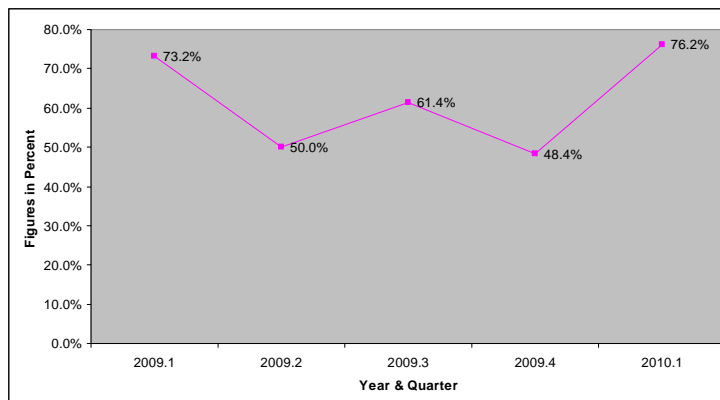


### TABLE 6 - AVERAGE CNMI HOTEL OCCUPANCY RATE

Hotel Occupancy Rate	Year					Quarter				
	2005	2006	2007	2008	2009	2009.1	2009.2	2009.3	2009.4	2010.1
<b>Hotel Occupancy Rate (%)</b>	70.0%	62.0%	58.9%	61.9%	58.3%	73.2%	50.0%	61.4%	48.4%	76.2%
% Change to Previous Year/Quarter	-3%	-11%	-5%	5%	-6%	3.7%	-12.2%	3.8%	-20.3%	4.0%
% Change to Previous Quarter						20.5%	-31.7%	22.7%	-21.2%	57.2%

Source: Hotel Association of the Northern Mariana Islands (HANMI). Data from HANMI members only.  
 Note: All Percents are Rounded to the Nearest Tenth

### FIGURE 6 - AVERAGE CNMI HOTEL OCCUPANCY RATE



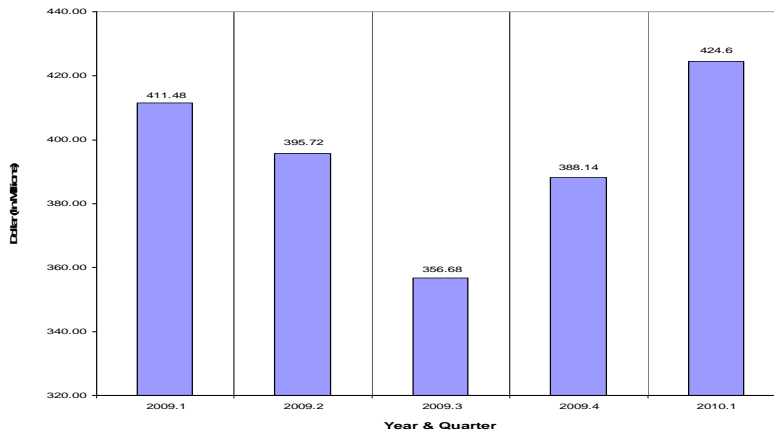
## TABLE 7 - BUSINESS GROSS REVENUE (BGR) REPORTED

Business Gross Revenue (BGR)	Year					Quarter				
	2005	2006	2007	2008	2009	2009.1	2009.2	2009.3	2009.4	2010.1
BGR Reported* (US \$ Millions)	2,020	1,829	1,692	1,668	1,584	411.48	395.72	356.68	388.14	424.6
% Change to Previous Year/Quarter	-0.7%	-9.5%	-7.5%	-1.4%	-5.0%	-1.2%	-6.7%	-16.6%	-7.7%	3.2%
% Change to Previous Quarter						-2.1%	-3.8%	-9.9%	8.8%	9.4%

Source: Department of Finance

\*Estimated based on BGRT and other income tax collections.

### FIGURE 7 - BUSINESS GROSS REVENUE (BGR) REPORTED



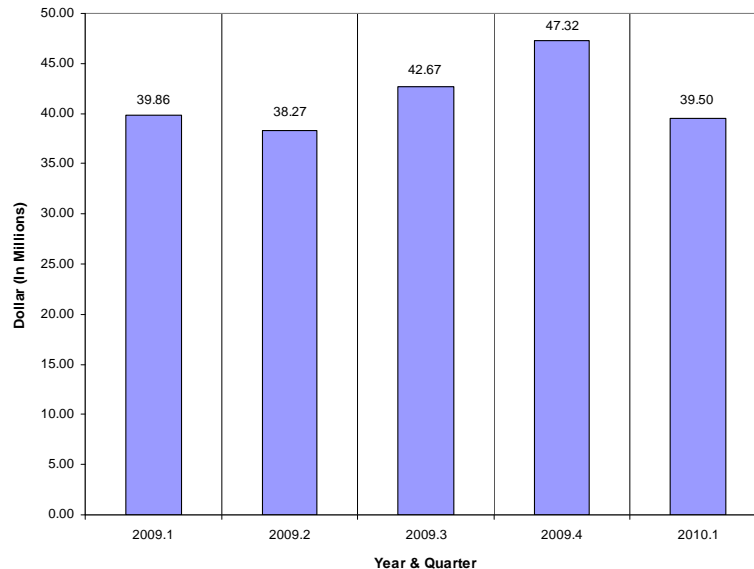
## TABLE 8 - GOVERNMENT EXPENDITURES

General Expenditures	Year					Quarter				
	2005	2006	2007	2008	2009	2009.1	2009.2	2009.3	2009.4	2010.1
Government Expenditures (US \$ Millions)*	224.10	195.60	163.02	170.60	164.59	39.86	38.27	42.67	47.32	39.50
% Change to Previous Year/Quarter	4.04%	-12.72%	-16.66%	4.65%	-3.52%	-9.2%	-17.6%	11.9%	8.1%	-0.9%
% Change to Previous Quarter						-9.0%	-4.0%	11.5%	10.9%	-16.5%

Source: Department of Finance

\*Note: FY07 - 08 expenditures do not include suspended employer retirement contributions

### FIGURE 8 - GOVERNMENT EXPENDITURES





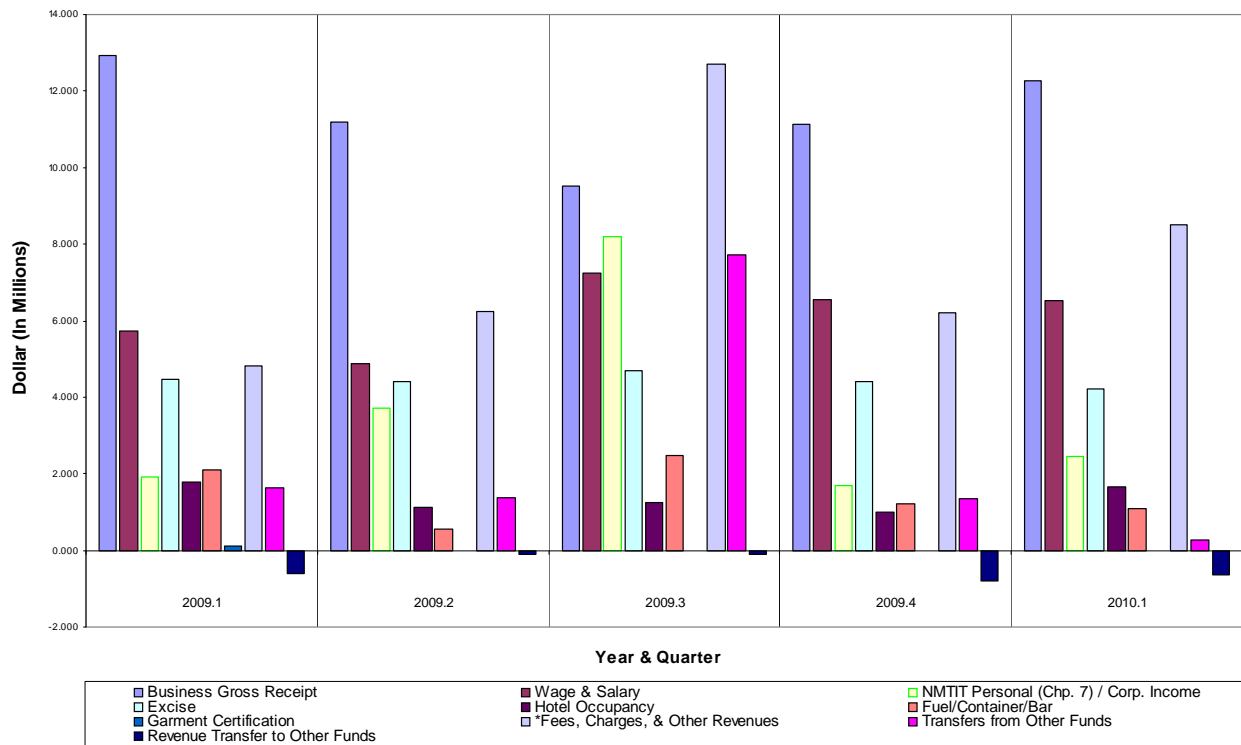
# TABLE 9 - GENERAL FUND REVENUE (TAXES AND FEES COLLECTED)

General Fund Revenue (Taxes and Fees Collected)	Year					Quarter				
	2005	2006	2007	2008	2009	2009.1	2009.2	2009.3	2009.4	2010.1
<b>Total (US \$ Millions)</b>	<b>210.29</b>	<b>192.03</b>	<b>163.03</b>	<b>162.26</b>	<b>157.76</b>	<b>34.848</b>	<b>33.340</b>	<b>53.695</b>	<b>32.806</b>	<b>36.339</b>
% Change to Previous Year/Quarter	-3.49%	-8.68%	-15.10%	-0.47%	-2.78%	-12.9%	-15.6%	13.4%	-8.6%	4.3%
% Change to Previous Quarter						-2.9%	-4.3%	61.1%	-38.9%	10.8%
Business Gross Receipt	58.29	54.05	49.04	50.08	47.31	12.921	11.193	9.514	11.137	12.254
Wage & Salary	32.68	28.58	26.20	25.71	23.57	5.733	4.893	7.240	6.566	6.52
NMTIT Personal (Chp. 7) / Corp. Income	10.01	15.05	8.34	12.90	15.44	1.920	3.700	8.190	1.704	2.456
Excise	23.88	24.41	20.58	19.98	17.98	4.485	4.396	4.687	4.422	4.207
Hotel Occupancy	6.50	5.54	4.93	5.61	5.04	1.783	1.118	1.249	0.990	1.645
Fuel/Container/Bar	10.24	7.25	6.82	6.50	7.29	2.087	0.557	2.497	1.233	1.106
Garment Certification	24.08	18.06	11.38	5.39	0.48	0.117	0.000	0.000	0.000	0.000
*Fees, Charges, & Other Revenues	44.61	33.81	39.26	33.74	30.27	4.809	6.232	12.707	6.200	8.523
Transfers from Other Funds				5.90	12.09	1.619	1.366	7.727	1.352	0.259
Revenue Transfer to Other Funds			-3.51	-3.56	-1.71	-0.626	-0.115	-0.116	-0.798	-0.631

Source: Department of Finance

\*Note: Also Includes "Transfers From Other Funds" for Years 2005 - 2007

## FIGURE 9 - GENERAL FUND REVENUE (TAXES AND FEES COLLECTED)



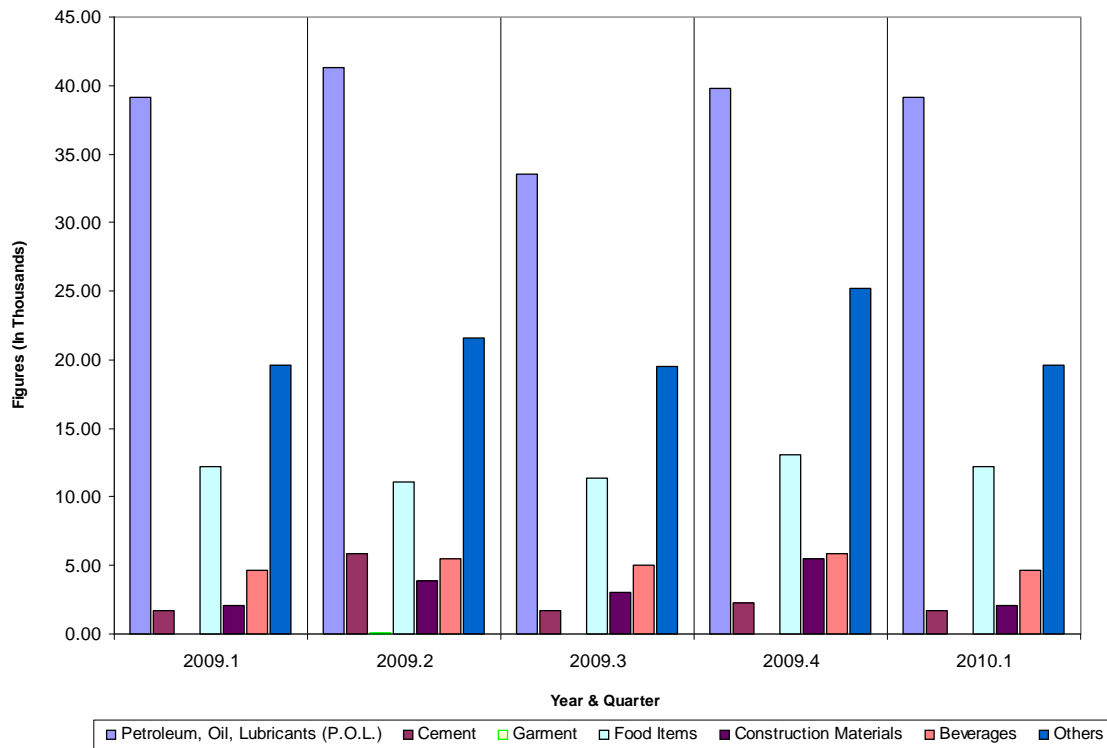
# TABLE 10 - IMPORTS

Imports	Year					Quarter				
	2005*	2006	2007	2008	2009	2009.1	2009.2	2009.3	2009.4	2010.1
<b>Total Tonnage (In Thousands)</b>	<b>605.50</b>	<b>540.20</b>	<b>461.99</b>	<b>384.55</b>	<b>316.88</b>	<b>79.34</b>	<b>89.21</b>	<b>74.18</b>	<b>91.69</b>	<b>79.34</b>
Petroleum, Oil, Lubricants (P.O.L.)	214.20	203.40	180.45	157.24	142.16	39.09	41.28	33.49	39.74	39.09
Cement	19.20	16.80	25.57	24.66	12.05	1.67	5.86	1.69	2.32	1.67
Garment	112.90	91.50	62.31	21.77	0.63	0.02	0.07	0.00	0.00	0.02
Food Items		62.30	55.87	51.41	46.48	12.20	11.06	11.40	13.11	12.20
Construction Materials		16.60	15.27	17.25	11.57	2.05	3.93	3.05	5.46	2.05
Beverages		23.50	20.97	20.35	20.28	4.65	5.45	5.02	5.83	4.65
Others	259.20	125.90	101.56	91.87	83.71	19.65	21.56	19.52	25.22	19.65

Source: Port of Saipan, Commonwealth Ports Authority (CPA)

\*Note: Others include Food, Construction Materials & Beverages for 2005

### FIGURE 10 - IMPORTS (IN THOUSANDS)

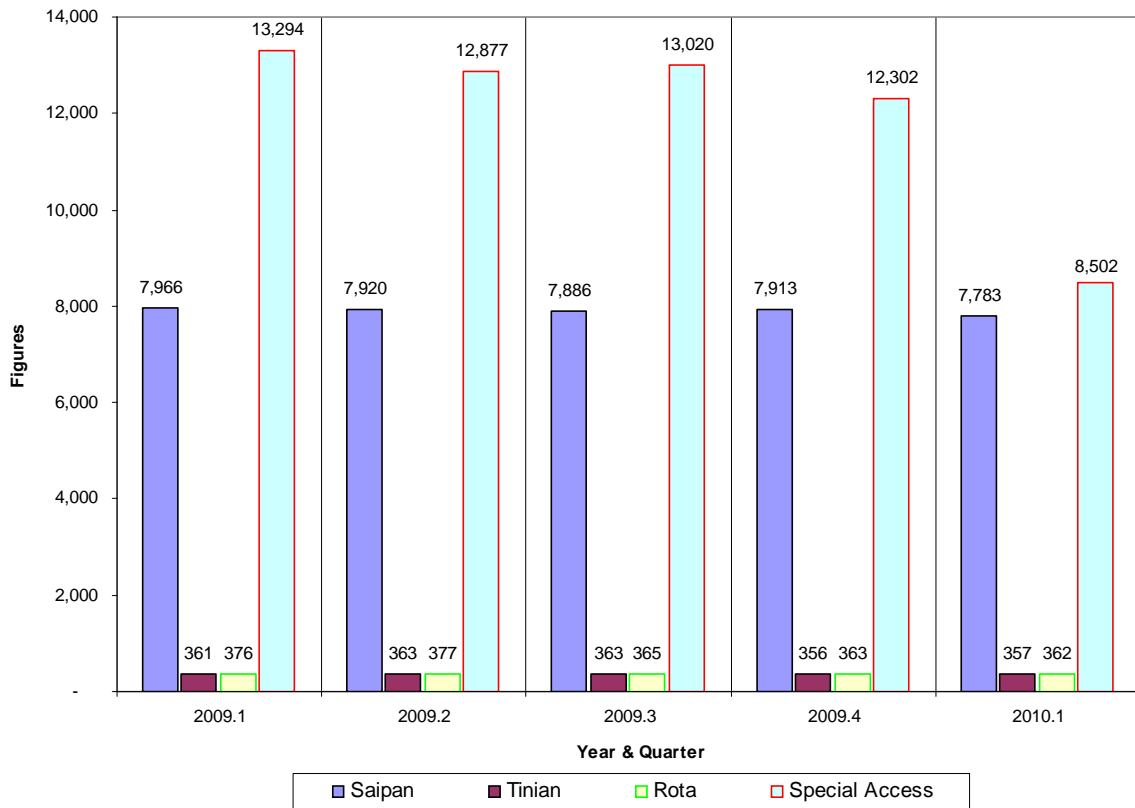


## TABLE 12 - TELEPHONE LINES

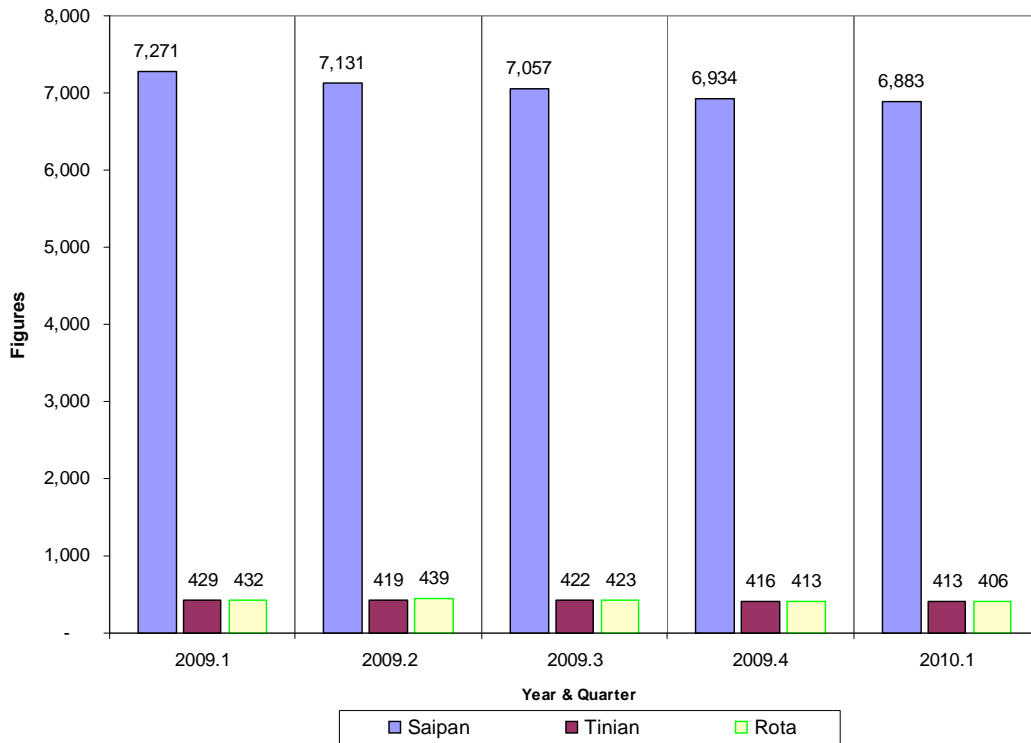
Telephone Lines	Year					Quarter				
	2005	2006	2007	2008	2009	2009.1	2009.2	2009.3	2009.4	2010.1
<b>Total Telephone Lines</b>	<b>31,752</b>	<b>30,684</b>	<b>28,963</b>	<b>28,148</b>	<b>29,918</b>	<b>30,129</b>	<b>29,526</b>	<b>29,536</b>	<b>28,697</b>	<b>29,081</b>
% Change to Previous Year/Quarter	0.7%	-3.4%	-5.6%	-2.8%	3.3%	5.2%	0.0%	0.2%	-5.8%	-3.5%
% Change to Previous Quarter						-1.1%	-2.0%	0.0%	-2.8%	1.3%
<b>Total Commercial Phone Lines</b>	<b>20,551</b>	<b>20,592</b>	<b>20,001</b>	<b>19,845</b>	<b>22,155</b>	<b>21,997</b>	<b>21,537</b>	<b>21,634</b>	<b>20,934</b>	<b>17,004</b>
% Change to Previous Year/Quarter	4.2%	0.20%	-2.9%	-0.8%	10.8%	10.8%	3.2%	2.9%	-5.5%	-22.7%
% Change to Previous Quarter						-0.7%	-2.1%	0.5%	-3.2%	-18.8%
Saipan	10,668	9,737	8,689	8,552	8,238	7,966	7,920	7,886	7,913	7,783
Tinian	435	387	376	381	366	361	363	363	356	357
Rota	466	428	410	395	385	376	377	365	363	362
Special Access	8,982	10,040	10,526	10,517	13,166	13,294	12,877	13,020	12,302	8,502
<b>Total Residential Phone Lines</b>	<b>11,201</b>	<b>10,092</b>	<b>8,962</b>	<b>8,303</b>	<b>7,763</b>	<b>8,132</b>	<b>7,989</b>	<b>7,902</b>	<b>7,763</b>	<b>7,702</b>
% Change to Previous Year/Quarter	-5.1%	-9.90%	-11.2%	-7.4%	-13.4%	-7.4%	-7.8%	-6.5%	-6.5%	-5.3%
% Change to Previous Quarter						-2.1%	-1.8%	-1.1%	-1.8%	-0.8%
Saipan	10,178	9,096	8,045	7,414	6,934	7,271	7,131	7,057	6,934	6,883
Tinian	499	492	458	439	416	429	419	422	416	413
Rota	524	504	459	450	413	432	439	423	413	406

Source: Island Telecom & Engineering (IT&E)

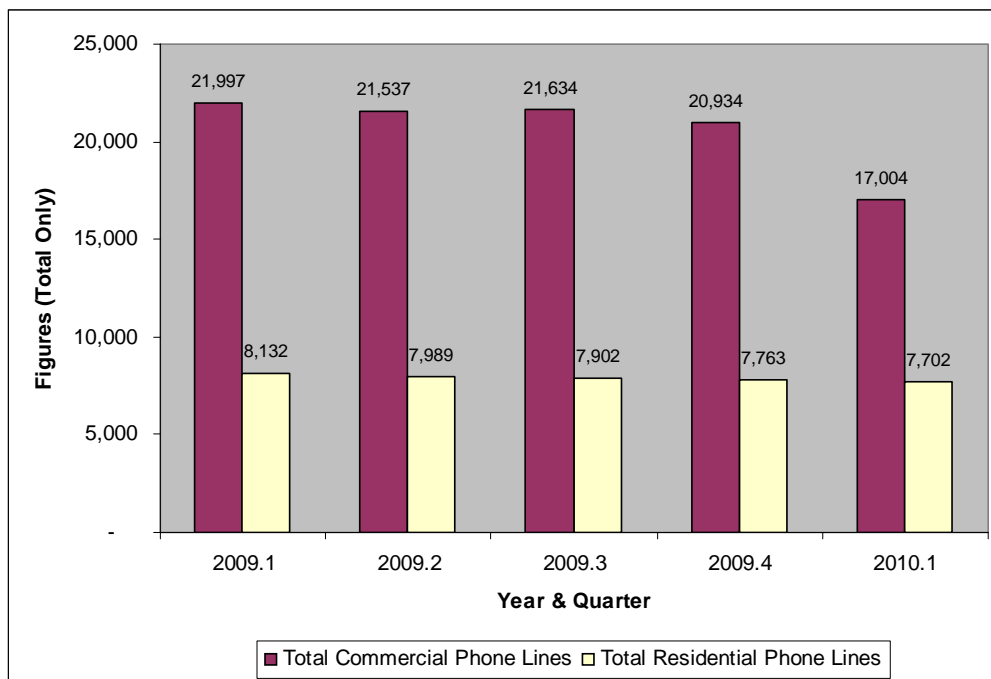
### FIGURE 12.1 - COMMERCIAL PHONE LINES BY ISLAND



**FIGURE 12.2 - RESIDENTIAL PHONE LINES BY ISLAND**



**FIGURE 12.3 - COMMERCIAL & RESIDENTIAL PHONE LINES (TOTALS)**

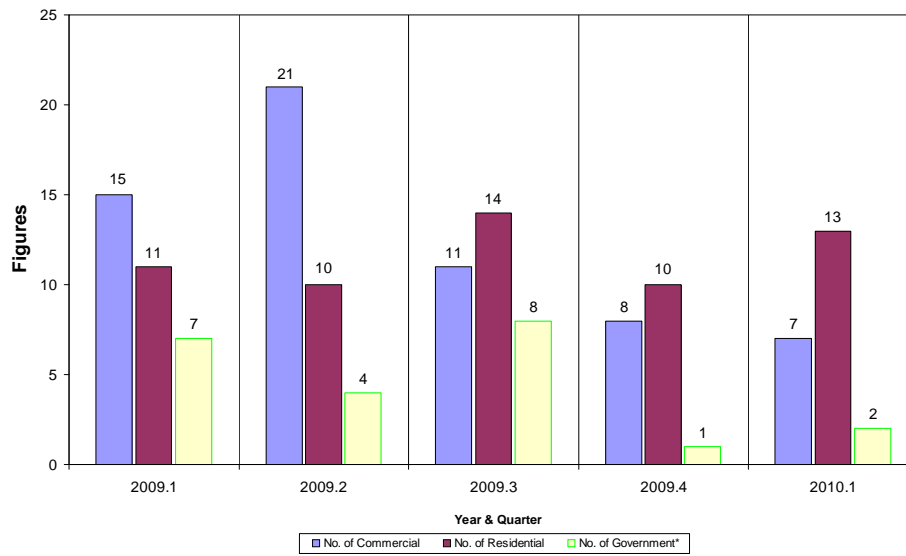


# TABLE 13 - BUILDING PERMITS

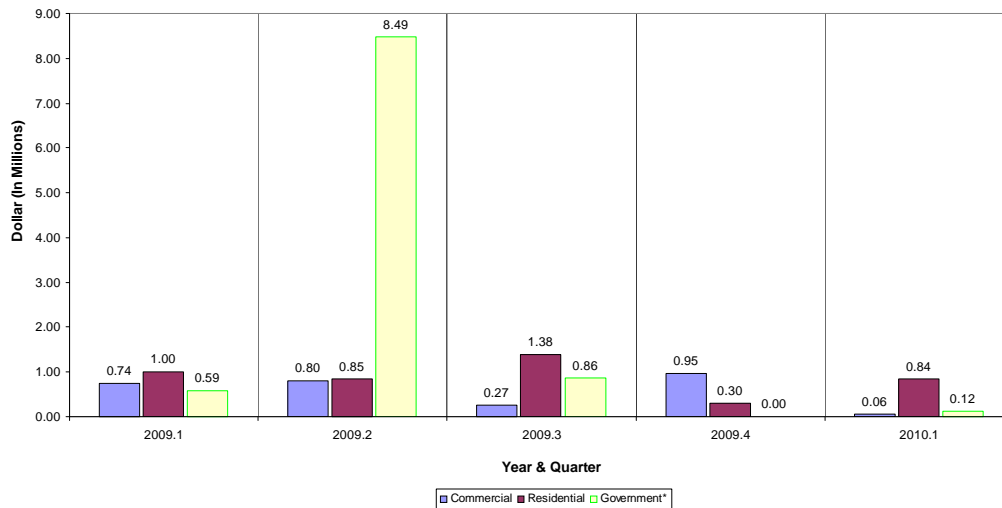
CNMI Building Permits Issued	Year					Quarter				
	2005	2006	2007	2008	2009	2009.1	2009.2	2009.3	2009.4	2010.1
<b>Total No. of Permits</b>	<b>350</b>	<b>292</b>	<b>238</b>	<b>234</b>	<b>144</b>	<b>33</b>	<b>35</b>	<b>33</b>	<b>19</b>	<b>22</b>
No. of Commercial	164	125	95	114	74	15	21	11	8	7
No. of Residential	186	167	136	105	50	11	10	14	10	13
No. of Government*			7	15	20	7	4	8	1	2
<b>Total Value (US \$ Millions)</b>	<b>28.89</b>	<b>11.79</b>	<b>13.89</b>	<b>36.41</b>	<b>27.01</b>	<b>2.33</b>	<b>10.14</b>	<b>2.50</b>	<b>1.25</b>	<b>1.02</b>
Commercial	19.94	3.59	7.66	26.66	13.07	0.74	0.80	0.27	0.95	0.06
Residential	8.95	7.74	5.86	5.44	4.01	1.00	0.85	1.38	0.30	0.84
Government*			0.37	4.31	9.94	0.59	8.49	0.86	0.00	0.12

Source: Building Safety Code Division, Department of Public Works  
 \*Recent Addition to 2007

## FIGURE 13.1 - NUMBER OF BUILDING PERMITS ISSUED



## FIGURE 13.2 - VALUES OF BUILDING PERMITS ISSUED (IN MILLIONS)



## TABLE 14 - CNMI CONSUMER PRICE INDEX (CPI) 3RD QUARTER

### COMMONWEALTH OF THE NORTHERN MARIANA ISLANDS

4th Quarter 2008 = 100

Groups	3rd Qtr 2009	2nd Qtr 2009	3rd Qtr 2008	To 3rd Qtr09 fm 2nd Qtr09	To 3rd Qtr09 fm 3rd Qtr 08
All Items	101.9	101.5	99.8	0.4	2.1
Food	104.6	101.6	97.7	3.0	7.0
Alcoholic Beverages	106.7	106.5	99.2	0.2	7.5
Housing and Utilities	97.9	101.3	104.3	-3.4	-6.2
Apparel	103.5	100.8	99.4	2.6	4.1
Transportation	105.4	103.4	92.3	2.0	14.2
Medical Care	102.3	102.8	96.7	-0.5	5.8
Recreation	104.9	102.1	100.0	2.8	4.9
Education and Communication	95.5	99.7	99.5	-4.3	-4.1
Other Goods and Services	102.3	101.7	100.0	0.6	2.3

Source: Department of Commerce, Central Statistics Division

NOTE: 1ST QUARTER 2010 FIGURES WILL BE PUBLISHED BY THE END OF AUGUST 2010

## TABLE 15 - CNMI CONSUMER PRICE INDEX (CPI) 4TH QUARTER

### COMMONWEALTH OF THE NORTHERN MARIANA ISLANDS

4th Quarter 2008 = 100

Groups	4th Qtr 2009	3rd Qtr 2009	4th Qtr 2008	To 4th Qtr09 fm 3rd Qtr09	To 4th Qtr09 fm 4th Qtr 08
All Items	105.6	101.9	100.0	3.7	5.6
Food	106.1	104.6	100.0	1.4	6.1
Alcoholic Beverages	106.5	106.7	100.0	-0.2	6.5
Housing and Utilities	108.0	97.9	100.0	10.3	8.0
Apparel	104.3	103.5	100.0	0.8	4.3
Transportation	108.5	105.4	100.0	2.9	8.5
Medical Care	101.5	102.3	100.0	-0.8	1.5
Recreation	105.1	104.9	100.0	0.2	5.1
Education and Communication	95.6	95.5	100.0	0.1	-4.4
Other Goods and Services	102.8	102.3	100.0	0.5	2.8

Source: Department of Commerce, Central Statistics Division

NOTE: 1ST QUARTER 2010 FIGURES WILL BE PUBLISHED BY THE END OF AUGUST 2010

# TABLE 16 - HISTORICAL CPIs FOR SELECTED GROUPS

## COMMONWEALTH OF THE NORTHERN MARIANA ISLANDS

1st Quarter 2003 / 4th Quarter 2008 = 100

Year & Quarter	Food	Alcoholic Beverages	Housing Utilities	Apparel	Transportation	Medical Care	Recreation	Education Communication	Other Goods & Services	All Items
Wgts	19.02	1.72	27.73	2.24	33.52	2.36	2.44	5.68	5.30	100.0
2000.1	93.7		67.5	107.0	92.8	78.0				82.4
2000.2	92.6		67.8	105.9	94.9	85.6				84.5
2000.3	94.4		68.6	106.4	97.0	86.1				85.7
2000.4	91.7		66.0	106.5	97.1	85.7				84.1
2001.1	88.2		66.4	106.5	96.8	85.3				83.2
2001.2	90.4		66.3	106.0	96.3	85.3				83.5
2001.3	89.9		68.2	106.0	95.9	85.2				83.6
2001.4	90.7		67.0	106.9	94.5	85.0				83.6
2002.1	89.2		67.3	105.7	95.2	90.6				84.8
2002.2	87.3		64.4	106.4	96.6	90.3				83.7
2002.3	86.1		66.3	106.2	96.6	90.4				83.7
2002.4	83.8		65.7	100.1	96.9	90.4				82.5
2003.1	84.2	95.9	65.5	98.6	95.7	92.5	101.9	98.7	92.9	83.0
2003.2	84.4	96.1	65.5	98.8	95.4	92.5	101.2	98.5	92.9	82.9
2003.3	84.7	95.9	65.0	99.6	95.4	92.5	101.0	98.9	92.9	82.8
2003.4	84.6	95.8	64.1	99.1	96.2	92.5	98.2	98.3	92.9	82.6
2004.1	86.8	95.8	64.4	99.5	96.2	92.5	97.5	98.2	92.9	83.2
2004.2	87.6	95.6	64.0	98.4	96.6	92.5	103.5	98.3	100.6	83.7
2004.3	88.6	96.0	63.8	94.2	95.7	92.5	100.8	97.4	100.6	83.4
2004.4	90.4	95.8	64.2	91.3	95.9	92.5	100.5	99.6	100.6	84.0
2005.1	90.0	95.9	64.3	96.6	96.3	92.5	100.7	96.7	100.6	84.1
2005.2	85.5	103.3	66.3	96.9	92.4	93.2	101.9	100.2	91.4	89.9
2005.3	84.3	96.3	65.7	98.7	92.2	92.8	102.0	98.3	94.2	83.0
2005.4	84.7	95.5	65.6	100.8	95.2	92.5	101.7	99.5	93.9	83.0
2006.1	85.3	96.8	65.7	100.1	109.1	92.8	108.6	101.7	93.6	83.0
2006.2	84.4	96.1	65.5	99.6	96.2	92.5	101.9	99.4	92.9	83.0
2006.3	93.7	97.1	65.5	137.8	96.2	92.5	101.9	100.9	92.9	83.0
2006.4	94.0	98.1	65.5	138.6	96.0	92.5	101.9	97.8	93.3	83.0
2007.1	88.3	99.6	92.3	100.4	95.7	92.5	102.2	99.5	92.9	93.3
2007.2	89.4	99.6	94.6	100.7	95.7	93.5	102.3	99.3	92.9	94.4
Year & Quarter	Food	Alcoholic Beverages	Housing Utilities	Apparel	Transportation	Medical Care	Recreation	Education Communication	Other Goods & Services	All Items
Wgts	19.02	1.72	27.73	2.24	33.52	2.36	2.44	5.68	5.30	100.0
2007.3	89.6	99.6	94.7	100.9	95.7	93.5	102.8	99.3	92.9	94.4
2007.4	90.4	100.0	94.9	100.9	95.7	93.5	103.0	99.3	92.9	94.7
2008.1	94.3	102.0	92.3	101.0	95.7	99.8	104.4	99.2	92.9	94.7
2008.2	94.6	102.8	105.8	99.9	98.8	99.8	101.7	99.2	92.9	100.3
2008.3	97.7	99.2	104.3	99.4	92.3	96.7	100.0	99.5	100.0	99.8
2008.4	100.0	100.0	100.0	100.0	100.0	100.0	100.0	100.0	100.0	100.0
2009.1	100.6	106.5	99.8	99.8	100.5	102.8	100.2	96.4	101.7	100.2
2009.2	101.6	106.5	101.3	100.8	103.4	102.8	102.1	99.7	101.7	101.5
2009.3	104.6	106.7	97.9	103.5	105.4	102.3	104.9	95.5	102.3	101.9
2009.4	106.1	106.5	108.0	104.3	108.5	101.5	105.1	95.6	102.8	105.6

1 The previous Consumer Price Index had only 5 major groups rather than the 9 that are in the revised CPI. Nevertheless, these historical CPIs will provide users with some indication of historical price movement of the CPI.

Source: Department of Commerce, Central Statistics Division

**NOTE: 1ST QUARTER 2010 FIGURES WILL BE PUBLISHED BY THE END OF AUGUST 2010**

## LIST OF CONTRIBUTORS

<b>Agency</b>		<b>Contact Number</b>
Commonwealth Auto-Dealer Association	<b>CADA</b>	234-5911
Commonwealth Ports Authority	<b>CPA</b>	664-3555/3553
Department of Commerce	<b>DOC</b>	664-3044/3023
Department of Finance	<b>DOF</b>	664-1186
Department of Public Works	<b>DPW</b>	234-2726
Hotel Association of Northern Mariana Islands	<b>HANMI</b>	233-3773/6964
Marianas Visitor Authority	<b>MVA</b>	664-3230
Island Telecom & Engineering	<b>IT&amp;E</b>	682-2612