



ECONOMIC INDICATOR

A QUARTERLY REPORT

July - September 2010



DEPARTMENT OF COMMERCE
COMMONWEALTH OF THE NORTHERN MARIANA ISLANDS
CALLER BOX 10007 CK
SAIPAN, MP 96950
TELEPHONE No.: (670) 664 - 3023

MESSAGE FROM THE SECRETARY

We are pleased to present the Third issue of the Economic Indicator, depicting the social and economic conditions of the Commonwealth of the Northern Mariana Islands (CNMI), covering July through September 2010.

This publication is made possible by data researched and tabulated under the Central Statistics Division, Department of Commerce, and with contributions from other CNMI Government departments and agencies, as well as inputs from private organizations.

Other reports published by the Department of Commerce may be accessed at:
www.commerce.gov.mp

We are committed to providing you, the public, business community, and leaders of the CNMI this quarterly issue for whatever purpose it may serve you. Moreover, we are grateful to all those who contributed to the successful compilation of this report and look forward to working closely together to ensure that future issues are published on time. We invite and welcome any suggestions or comments that may improve our quarterly publications. Please send your thoughts to our office.

Certain data in this report were not available from our sources, but we are confident such will be provided in the coming quarters.

Si Yu'us Ma'ase,

for Sixto K. Igisomar
Acting Secretary of Commerce

Table of Contents

TABLE 1 - BANKING ACTIVITY	4
FIGURE 1.1 - BANKING ACTIVITY - DEPOSITS	4
FIGURE 1.2 - BANKING ACTIVITY - LOANS	4
TABLE 2 - REMITTANCE	5
FIGURE 2 - REMITTANCE	5
FIGURE 3 - AUTO SALES	5
TABLE 3 - AUTO SALES	5
TABLE 4 - VISITOR ARRIVAL	6
FIGURE 4 - VISITOR ARRIVAL	6
TABLE 5 - AVERAGE CNMI HOTEL DAILY RATE	7
FIGURE 5 - AVERAGE CNMI HOTEL DAILY RATE	7
TABLE 6 - AVERAGE CNMI HOTEL OCCUPANCY RATE	7
FIGURE 6 - AVERAGE CNMI HOTEL OCCUPANCY RATE	7
TABLE 7 - BUSINESS GROSS REVENUE (BGR) REPORTED	8
FIGURE 7 - BUSINESS GROSS REVENUE (BGR) REPORTED	8
TABLE 8 - GOVERNMENT EXPENDITURES	8
FIGURE 8 - GOVERNMENT EXPENDITURES	8
TABLE 9 - GENERAL FUND REVENUE (TAXES AND FEES COLLECTED)	9
FIGURE 9 - GENERAL FUND REVENUE (TAXES AND FEES COLLECTED)	9
TABLE 10 - IMPORTS	10
FIGURE 10 - IMPORTS (IN THOUSANDS)	10
TABLE 11 - EXPORTS	11
FIGURE 11 - EXPORTS (IN MILLIONS)	11
TABLE 12 - TELEPHONE LINES	11
FIGURE 12.1 - COMMERCIAL PHONE LINES BY ISLAND	12
FIGURE 12.2 - RESIDENTIAL PHONE LINES BY ISLAND	12
FIGURE 12.3 - COMMERCIAL & RESIDENTIAL PHONE LINES (TOTALS)	12
TABLE 13 - BUILDING PERMITS	13
FIGURE 13.1 - NUMBER OF BUILDING PERMITS ISSUED	13
FIGURE 13.2 - VALUES OF BUILDING PERMITS ISSUED (IN MILLIONS)	13
TABLE 14 - CNMI CONSUMER PRICE INDEX	14
TABLE 15 - CNMI CONSUMER PRICE INDEX FOR 9 SELECTED GROUPS	14
TABLE 16 - HISTORICAL CPIs FOR SELECTED GROUPS	15
LIST OF CONTRIBUTORS	16

TABLE 1 - BANKING ACTIVITY

Banking Activity (US \$ Millions)	Year				Quarter						
	2006	2007	2008	2009	2009.1	2009.2	2009.3	2009.4	2010.1	2010.2	2010.3
Total Deposits	517.90	531.20	446.34	445.42	450.23	467.74	461.12	445.42	460.11	454.66	452.70
Total Demand (Checking)	143.10	156.85	140.24	144.41	134.98	131.79	130.64	144.41	151.3	150.19	163.48
Total Savings	159.70	143.25	114.10	151.85	129.10	139.40	148.23	151.85	157.73	149.93	158.35
Total TCDs*	215.10	231.10	192.00	149.16	186.15	196.55	182.25	149.16	151.08	154.54	130.87
Total Loans	180.80	161.61	144.65	127.71	136.42	134.26	129.06	127.71	125.27	125.01	122.15
Consumer	74.10	65.30	58.16	50.04	53.77	52.16	50.29	50.04	49.48	50.31	48.74
Real Estate	45.90	42.33	40.62	36.48	38.58	37.99	36.69	36.48	35.5	33.77	33.57
Commercial	60.80	53.97	45.88	41.19	44.06	44.12	42.08	41.19	40.3	40.93	39.84
Loan to Deposit Ratio	34.9%	30.4%	32.4%	28.7%	30.3%	28.7%	28.0%	28.7%	27.2%	27.5%	27.0%

Source: Banking Section, Department of Commerce
 *Includes Cashiers Checks

FIGURE 1.1 - BANKING ACTIVITY - DEPOSITS

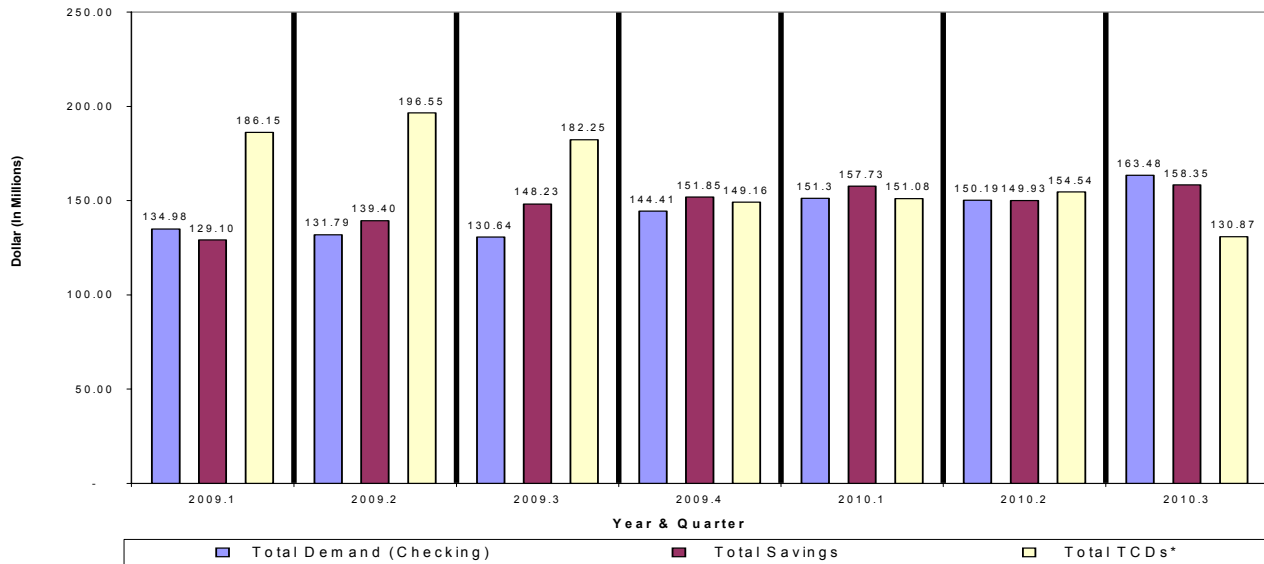


FIGURE 1.2 - BANKING ACTIVITY - LOANS

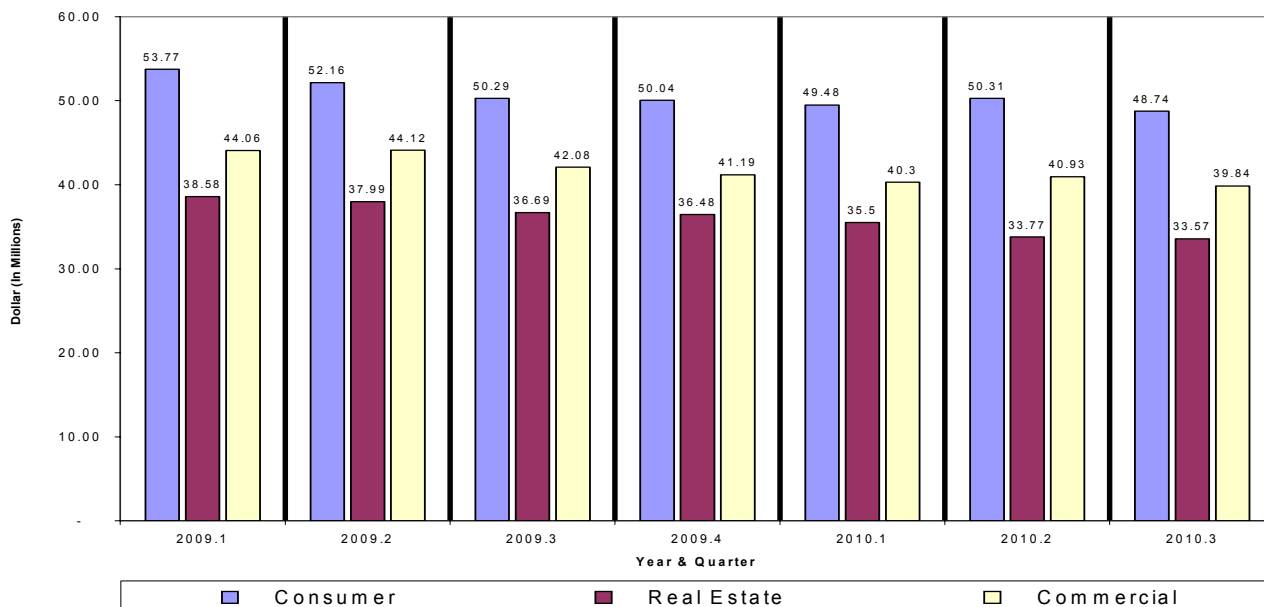


TABLE 2 - REMITTANCE

Remittances	Year					Quarter						
	2005	2006	2007	2008	2009	2009.1	2009.2	2009.3	2009.4	2010.1	2010.2	2010.3
Remittances (US \$ Millions)	112.6	102.2	93.6	76.8	64.7	16.0	16.2	15.9	16.6	16.3	16.1	17.4
% Change to Previous Year/Quarter	19.0%	-9.2%	-8.4%	-18.0%	-15.7%	-23.0%	-17.8%	-16.6%	-3.3%	1.6%	-0.6%	9.4%
% Change to Previous Quarter						-6.5%	0.9%	-1.9%	4.4%	-1.8%	-1.2%	8.1%

Source: Banking Section, Department of Commerce

FIGURE 2 - REMITTANCE

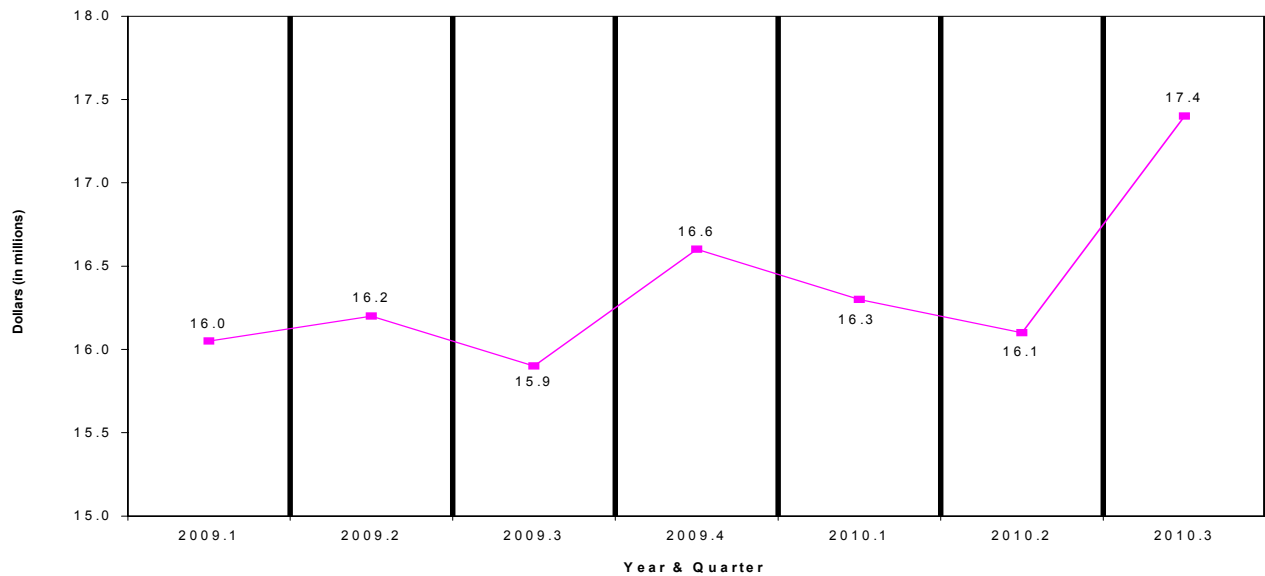


TABLE 3 - AUTO SALES

Auto Sales	Year				Quarter						
	2006	2007	2008	2009	2009.1	2009.2	2009.3	2009.4	2010.1	2010.2	2010.3
Total Cars Sold	1,352	1,101	966	849	203	203	235	208	256	195	236
% Change to Previous Year/Quarter	-28.2%	-18.6%	-12.3%	-12.1%	-32.3%	-10.2%	-6.7%	10.6%	26.1%	-3.9%	0.4%
% Change to Previous Quarter					8.0%	0.0%	15.8%	-11.5%	23.1%	-23.8%	21.0%
New Cars	1,000	632	595	469	95	101	139	134	182	128	153
Used Cars	352	469	371	380	108	102	96	74	74	67	83

Source: Commonwealth Auto Dealer's Association (CADA)

FIGURE 3 - AUTO SALES

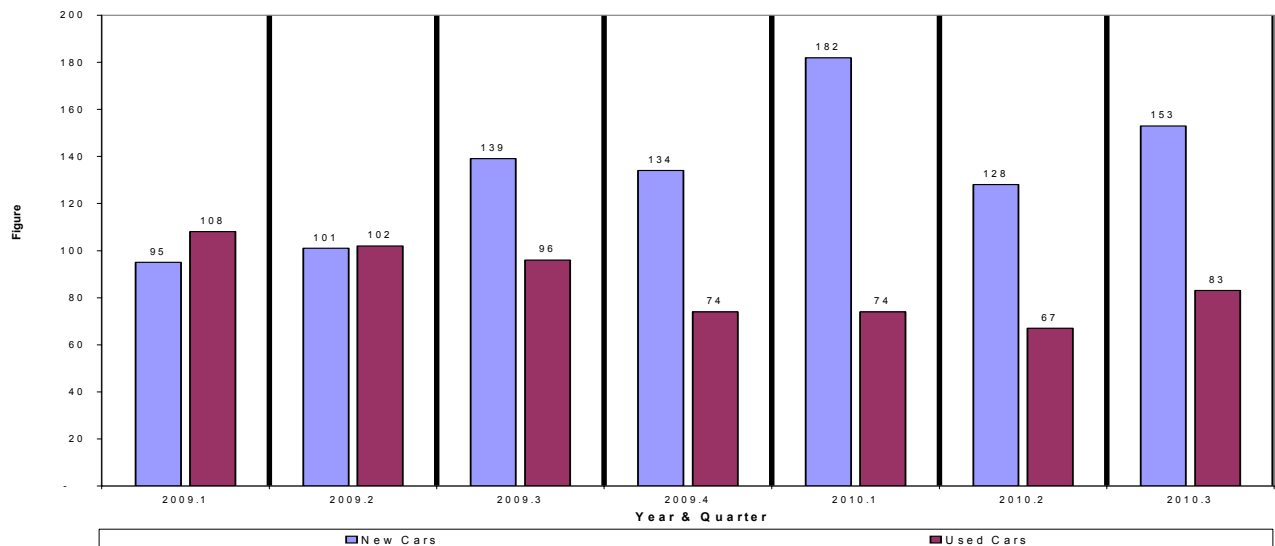


TABLE 4 - VISITOR ARRIVAL

Visitor Arrivals	Year				Quarter						
	2006	2007	2008	2009	2009.1	2009.2	2009.3	2009.4	2010.1	2010.2	2010.3
Total Visitors	435,494	389,261	397,271	353,956	107,434	73,764	99,128	73,630	109,786	81,642	103,128
% Change to Previous Year/Quarter	-11.43%	-10.62%	2.06%	-10.90%	-2.9%	-21.5%	2.0%	-22.9%	2.2%	10.7%	4.0%
% Change to Previous Quarter					12.5%	-31.3%	34.4%	-25.7%	49.1%	-25.6%	26.3%
Japan	269,780	200,109	213,299	191,111	63,429	38,199	54,690	34,793	58,974	35,348	53,705
Korea	82,891	108,321	111,116	89,132	22,513	19,868	24,889	21,862	29,498	27,193	29,526
U.S. & Guam	24,579	27,849	31,064	29,259	7,945	7,007	7,544	6,763	6,706	7,020	6,707
China/Hong Kong	38,313	40,331	26,878	29,814	8,747	3,792	9,385	7,890	12,547	8,940	11,335
Philippines	4,320	5,025	1,780	1,591	322	507	360	402	129	302	126
Russia	1,675	3,671	6,814	6,222	2,352	1,396	1,322	1,152	1,164	1,050	963
Taiwan	314	445	284	418	106	17	235	60	21	23	116
Others Areas*	6,178	3,510	6,036	6,409	2,020	2,978	703	708	747	1,766	650

Source: Marianas Visitors Authority (MVA)

FIGURE 4 - VISITOR ARRIVAL

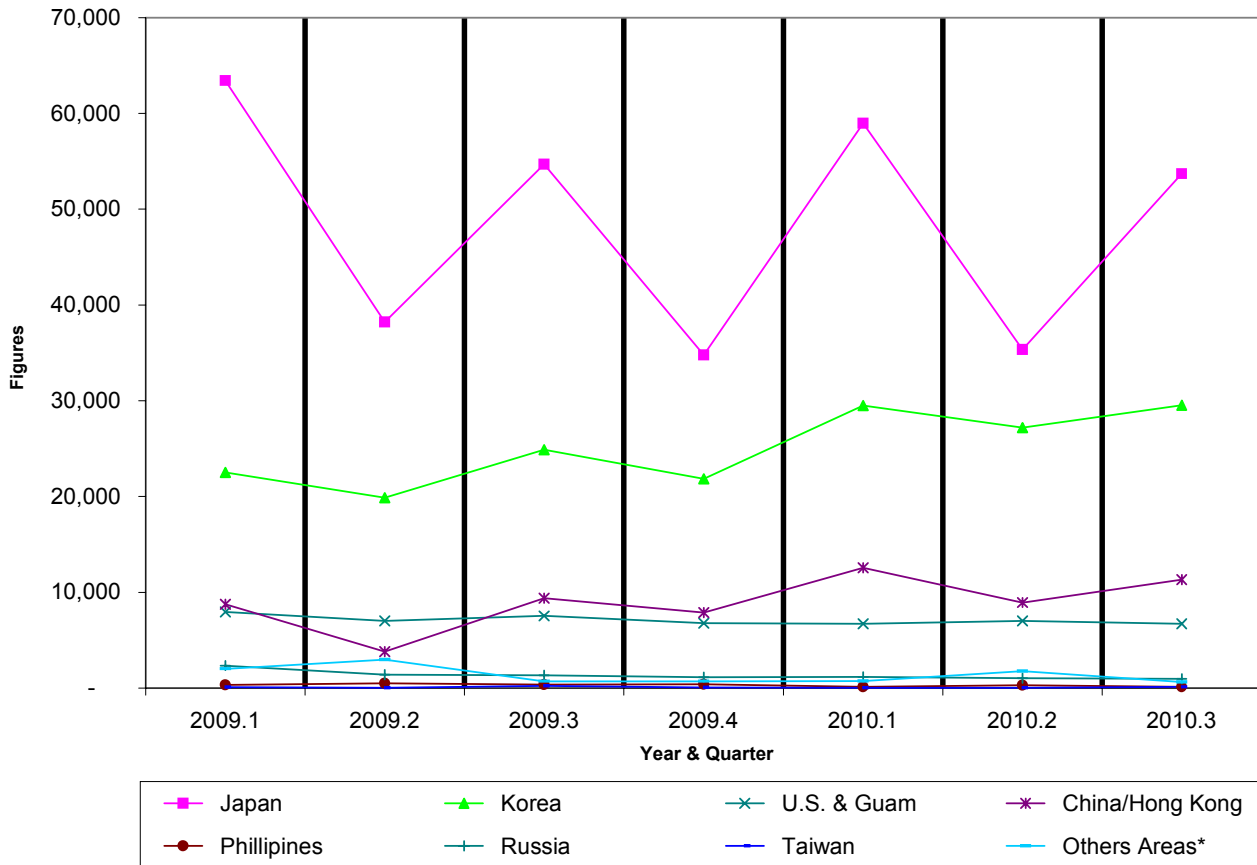


TABLE 5 - AVERAGE CNMI HOTEL DAILY RATE

Hotel Daily Rates	Year				Quarter						
	2006	2007	2008	2009	2009.1	2009.2	2009.3	2009.4	2010.1	2010.2	2010.3
Average Daily Rates (\$)	90.00	92.12	97.74	95.22	99.99	91.40	96.56	92.92	98.85	89.26	98.83
% Change to Previous Year/Quarter	8.4%	2.4%	6.1%	-2.6%	-1.1%	-1.5%	-5.2%	-2.4%	-1.1%	-2.3%	2.4%
% Change to Previous Quarter					5.0%	-8.6%	5.6%	-3.8%	6.4%	-9.7%	10.7%

Source: Hotel Association of the Northern Mariana Islands (HANMI). Data from HANMI members only.

Note: All Percents are Rounded to the Nearest Tenth

FIGURE 5 - AVERAGE CNMI HOTEL DAILY RATE

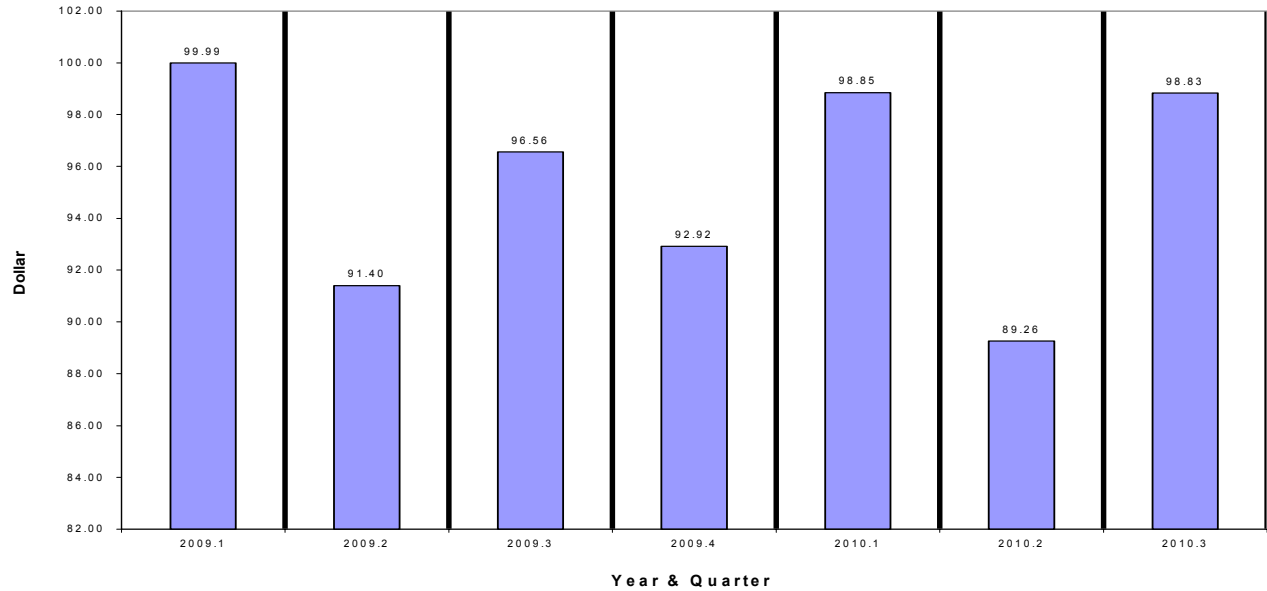


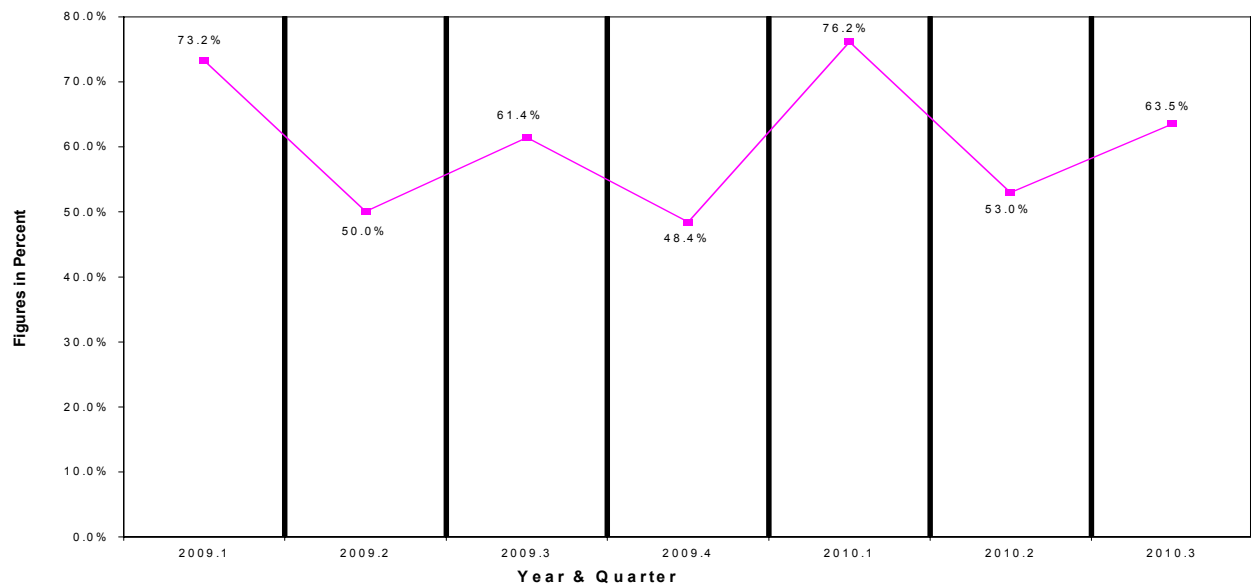
TABLE 6 - AVERAGE CNMI HOTEL OCCUPANCY RATE

Hotel Occupancy Rate	Year				Quarter						
	2006	2007	2008	2009	2009.1	2009.2	2009.3	2009.4	2010.1	2010.2	2010.3
Hotel Occupancy Rate (%)	62.0%	58.9%	61.9%	58.3%	73.2%	50.0%	61.4%	48.4%	76.2%	53.0%	63.5%
% Change to Previous Year/Quarter	-11%	-5%	5%	-6%	3.7%	-12.2%	3.8%	-20.3%	4.0%	5.8%	3.4%
% Change to Previous Quarter					20.5%	-31.7%	22.7%	-21.2%	57.2%	-30.4%	19.9%

Source: Hotel Association of the Northern Mariana Islands (HANMI). Data from HANMI members only.

Note: All Percents are Rounded to the Nearest Tenth

FIGURE 6 - AVERAGE CNMI HOTEL OCCUPANCY RATE



NOTE: DATA FOR THIRD QUARTER 2010 NOT AVAILABLE AT TIME OF RELEASE.

TABLE 7 - BUSINESS GROSS REVENUE (BGR) REPORTED

Business Gross Revenue (BGR)	Year				Quarter					
	2006	2007	2008	2009	2009.1	2009.2	2009.3	2009.4	2010.1	2010.2
BGR Reported* (US \$ Millions)	1,829	1,672	1,689	1,552	411.48	395.72	356.68	388.14	424.60	453.86
% Change to Previous Year/Quarter	-9.4%	-8.6%	1.0%	-8.1%	-1.2%	-6.7%	-16.6%	-7.7%	3.2%	14.7%
% Change to Previous Quarter					-2.1%	-3.8%	-9.9%	8.8%	9.4%	6.9%

Source: Department of Finance

*Estimated based on BGRT and other income tax collections.

FIGURE 7 - BUSINESS GROSS REVENUE (BGR) REPORTED

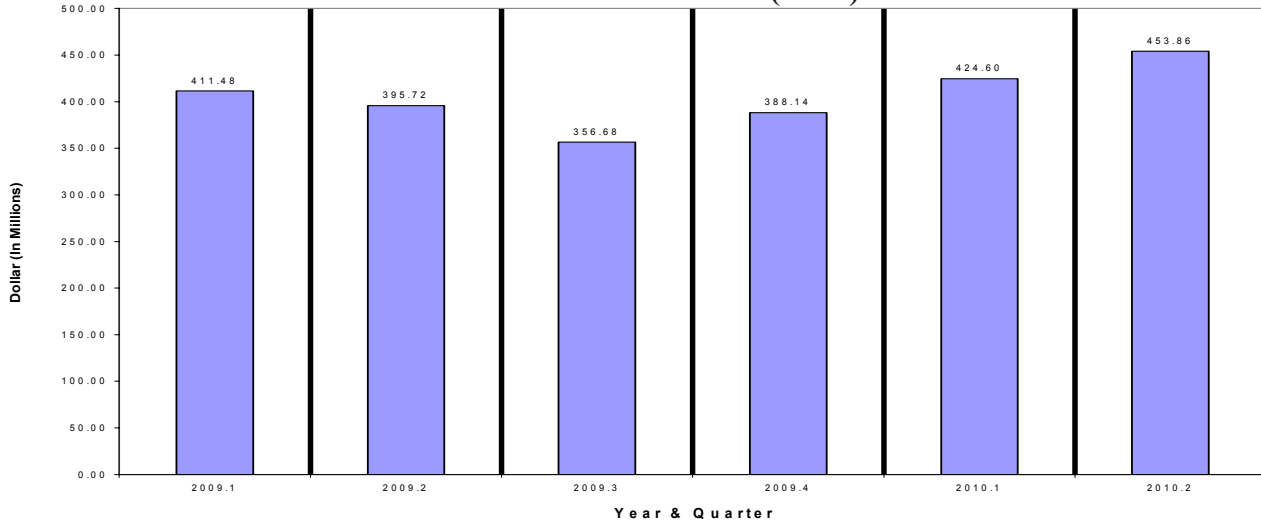


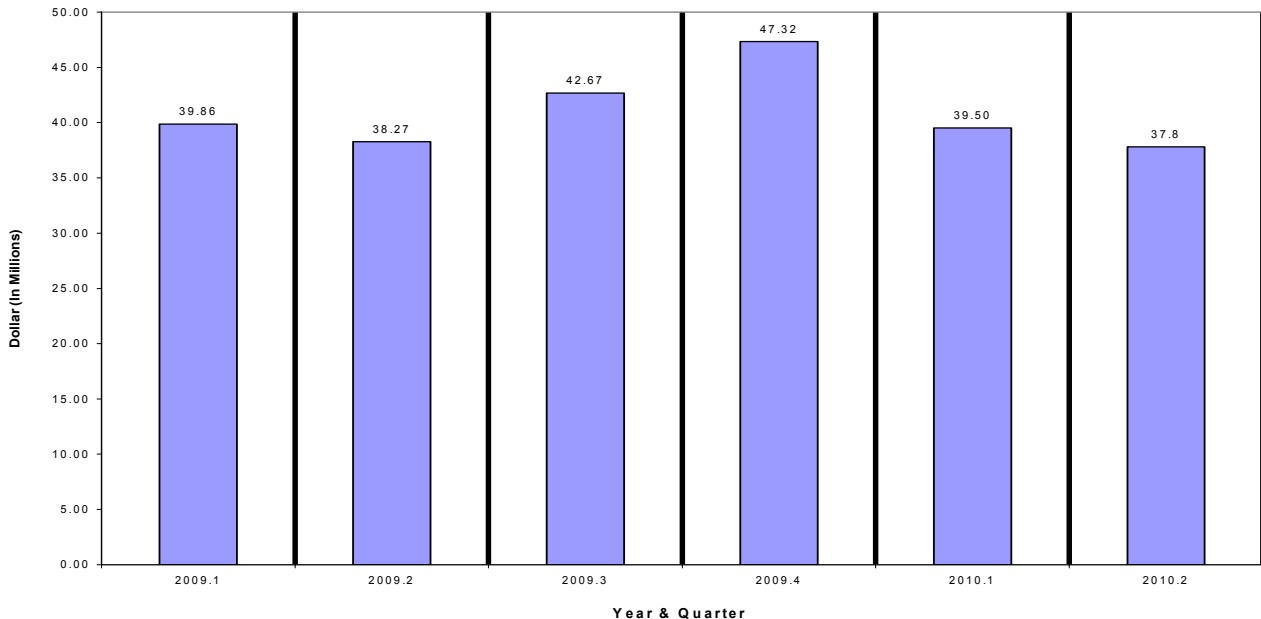
TABLE 8 - GOVERNMENT EXPENDITURES

General Expenditures	Year				Quarter					
	2006	2007	2008	2009	2009.1	2009.2	2009.3	2009.4	2010.1	2010.2
Government Expenditures (US \$ Millions)*	195.60	162.67	172.24	168.12	39.86	38.27	42.67	47.32	39.50	37.8
% Change to Previous Year/Quarter	-12.72%	-16.83%	5.88%	-2.39%	-9.2%	-17.6%	11.9%	8.1%	-0.9%	-1.2%
% Change to Previous Quarter					-9.0%	-4.0%	11.5%	10.9%	-16.5%	-4.3%

Source: Department of Finance

*Note: FY07 - 08 expenditures do not include suspended employer retirement contributions

FIGURE 8 - GOVERNMENT EXPENDITURES



NOTE: DATA FOR THIRD QUARTER 2010 NOT AVAILABLE AT TIME OF RELEASE.

NOTE: DATA FOR THIRD QUARTER 2010 NOT AVAILABLE AT TIME OF RELEASE.

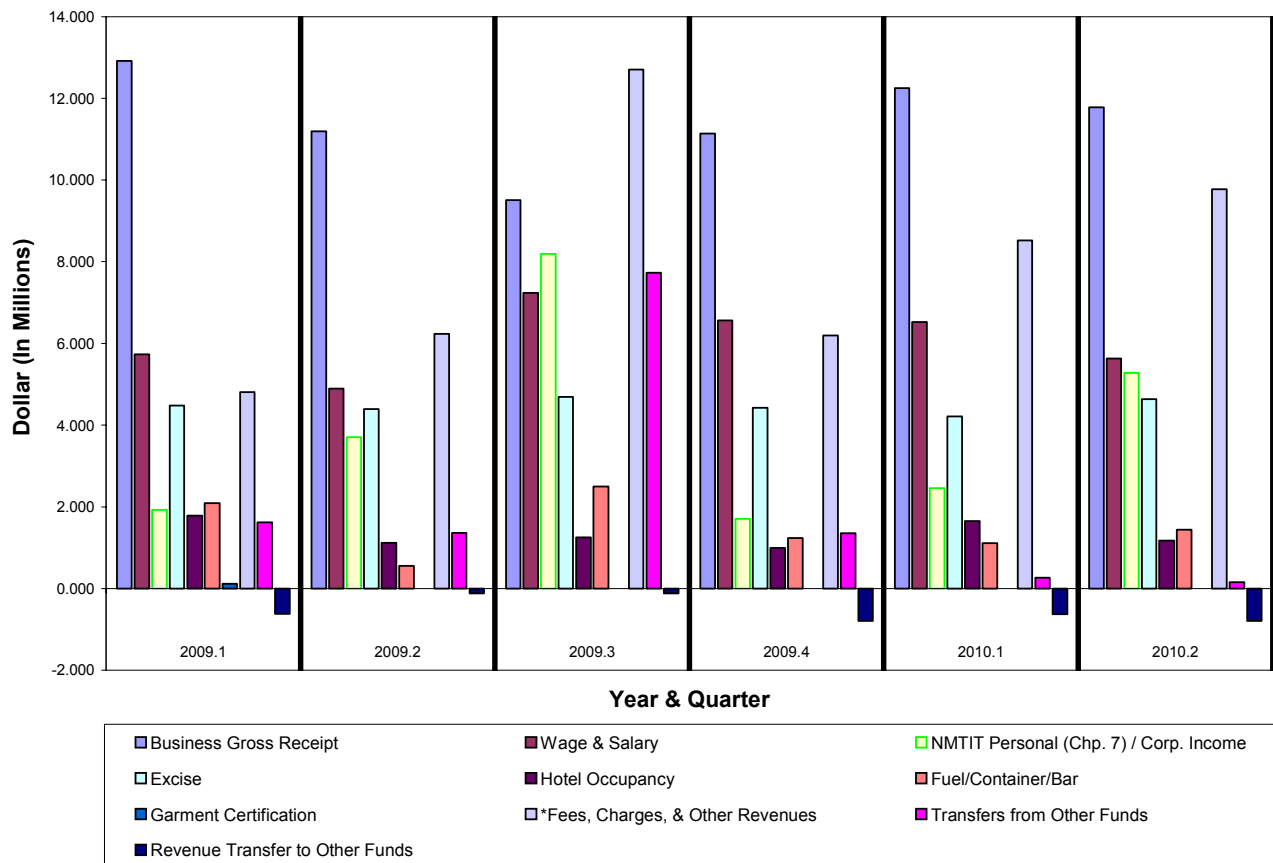
TABLE 9 - GENERAL FUND REVENUE (TAXES AND FEES COLLECTED)

General Fund Revenue (Taxes and Fees Collected)	Year				Quarter					
	2006	2007	2008	2009	2009.1	2009.2	2009.3	2009.4	2010.1	2010.2
Total (US \$ Millions)	192.03	163.03	162.76	154.69	34.848	33.340	53.695	32.806	36.339	39.070
% Change to Previous Year/Quarter	-8.68%	-15.10%	-0.17%	-4.96%	-12.9%	-15.6%	13.4%	-8.6%	4.3%	17.2%
% Change to Previous Quarter					-2.9%	-4.3%	61.1%	-38.9%	10.8%	7.5%
Business Gross Receipt	54.05	49.04	51.78	44.77	12.921	11.193	9.514	11.137	12.254	11.784
Wage & Salary	28.58	26.20	25.05	24.43	5.733	4.893	7.240	6.566	6.520	5.631
NMTIT Personal (Chp. 7) / Corp. Income	15.05	8.34	12.90	15.51	1.920	3.700	8.190	1.704	2.456	5.278
Excise	24.41	20.58	19.72	17.99	4.485	4.396	4.687	4.422	4.207	4.637
Hotel Occupancy	5.54	4.93	5.56	5.14	1.783	1.118	1.249	0.990	1.645	1.167
Fuel/Container/Bar	7.25	6.82	7.28	6.37	2.087	0.557	2.497	1.233	1.106	1.437
Garment Certification	18.06	11.38	3.63	0.12	0.117	0.000	0.000	0.000	0.000	0.000
*Fees, Charges, & Other Revenues	33.81	39.26	33.17	29.95	4.809	6.232	12.707	6.200	8.523	9.778
Transfers from Other Funds			7.29	12.06	1.619	1.366	7.727	1.352	0.259	0.154
Revenue Transfer to Other Funds		-3.51	-3.62	-1.66	-0.626	-0.115	-0.116	-0.798	-0.631	-0.796

Source: Department of Finance

*Note: Also Includes "Transfers From Other Funds" for Years 2005 - 2007

FIGURE 9 - GENERAL FUND REVENUE (TAXES AND FEES COLLECTED)



NOTE: DATA FOR THIRD QUARTER 2010 NOT AVAILABLE AT TIME OF RELEASE.

TABLE 10 - IMPORTS

Imports	Year				Quarter						
	2006	2007	2008	2009	2009.1	2009.2	2009.3	2009.4	2010.1	2010.2	2010.3
Total Tonnage (In Thousands)	540.20	439.44	356.35	334.42	79.34	89.21	74.18	91.69	79.02	89.24	85.68
Petroleum, Oil, Lubricants (P.O.L.)	203.40	175.99	145.30	153.61	39.09	41.28	33.49	39.74	38.33	45.18	33.01
Cement	16.80	27.15	21.31	11.54	1.67	5.86	1.69	2.32	1.99	3.44	5.43
Garment	91.50	51.64	12.48	0.09	0.02	0.07	0.00	0.00	0.00	0.01	0.03
Food Items	62.30	53.53	49.37	47.78	12.20	11.06	11.40	13.11	11.19	12.03	12.50
Construction Materials	16.60	14.90	16.86	14.50	2.05	3.93	3.05	5.46	3.65	2.60	2.67
Beverages	23.50	20.66	20.30	20.97	4.65	5.45	5.02	5.83	4.82	4.80	5.53
Others*	125.90	95.57	90.74	85.95	19.65	21.56	19.52	25.22	19.04	21.19	26.52

Source: Port of Saipan, Commonwealth Ports Authority (CPA)

*Note: Others include Vehicles, Tobacco, Clothing, Heavy Equipment & All Others; Prior to 2006 Others also included Food Items, Construction Materials, & Beverages; Values are rounded to the nearest Hundredths; Shipments between Islands are not counted

FIGURE 10 - IMPORTS (IN THOUSANDS)

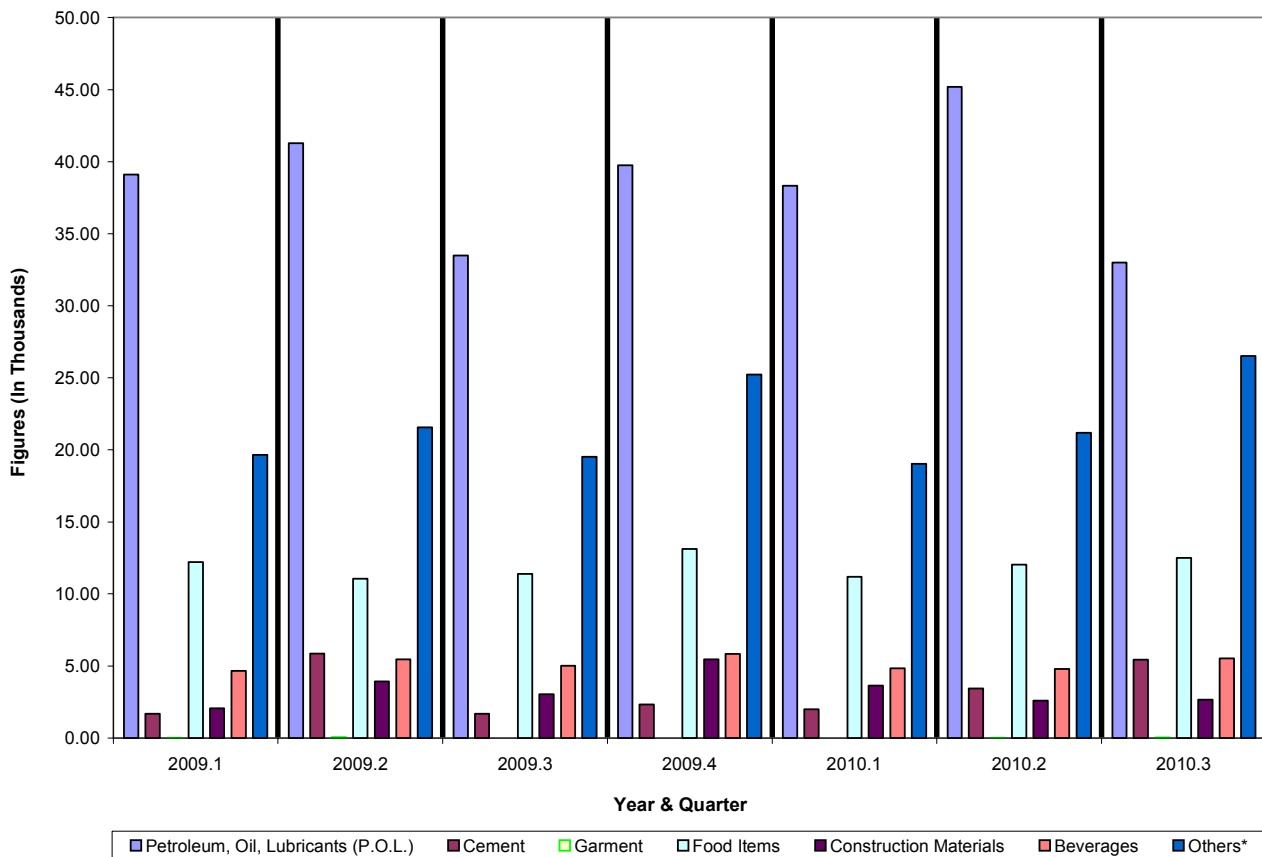


TABLE 11 - EXPORTS

Exports	Year					Quarter				
	2005	2006	2007	2008	2009	2008.1	2008.2	2008.3	2008.4	2009.1
Garment Exports Value (US \$ Millions)*	650.80	486.50	307.57	98.22	3.14	47.54	25.24	15.70	9.73	3.14
% Change to Previous Year/Quarter	-21.21%	-25.25%	-36.78%	-68.07%	-96.81%	-53.34%	-67.11%	-78.07%	-83.02%	-93.41%
% Change to Previous Quarter						-17.03%	-46.90%	-37.79%	-38.04%	-67.78%

Source: Department of Finance

*Note: Estimated Based on Garment Certification Fee Collection; Shipments between Islands are not counted

FIGURE 11 - EXPORTS (IN MILLIONS)

NOTE: EXPORT OF GARMENT CEASED IN THE SECOND QUARTER OF 2009. EXPORT DATA WILL NOT BE COLLECTED FOR THE TIME BEING. THE AVAILABLE DATA ABOVE IS THE LAST EXPORT OF GARMENT DURING THE FIRST QUARTER OF 2009.

TABLE 12 - TELEPHONE LINES

Telephone Lines	Year					Quarter					
	2006	2007	2008	2009	2009.1	2009.2	2009.3	2009.4	2010.1	2010.2	2010.3
Total Telephone Lines	30,684	28,963	30,458	28,697	30,129	29,526	29,536	28,697	24,706	24,419	29,487
% Change to Previous Year/Quarter	-3.4%	-5.6%	5.2%	-5.8%	5.2%	0.0%	0.2%	-5.8%	-18.0%	-17.3%	-0.2%
% Change to Previous Quarter					-1.1%	-2.0%	0.0%	-2.8%	-13.9%	-1.2%	20.8%
Total Commercial Phone Lines	20,592	20,001	22,155	20,934	21,997	21,537	21,634	20,934	17,004	16,860	21,945
% Change to Previous Year/Quarter	0.20%	-2.9%	10.8%	-5.5%	10.8%	3.2%	2.9%	-5.5%	-22.7%	-21.7%	1.4%
% Change to Previous Quarter					-0.7%	-2.1%	0.5%	-3.2%	-18.8%	-0.8%	30.2%
Saipan	9,737	8,689	8,238	7,913	7,966	7,920	7,886	7,913	7,783	7,729	7,656
Tinian	387	376	366	356	361	363	363	356	357	341	337
Rota	428	410	385	363	376	377	365	363	362	360	368
Special Access	10,040	10,526	13,166	12,302	13,294	12,877	13,020	12,302	8,502	8,430	13,584
Total Residential Phone Lines	10,092	8,962	8,303	7,763	8,132	7,989	7,902	7,763	7,702	7,559	7,542
% Change to Previous Year/Quarter	-9.90%	-11.2%	-7.4%	-6.5%	-7.4%	-7.8%	-6.5%	-6.5%	-5.3%	-5.4%	-4.6%
% Change to Previous Quarter					-2.1%	-1.8%	-1.1%	-1.8%	-0.8%	-1.9%	-0.2%
Saipan	9,096	8,045	7,414	6,934	7,271	7,131	7,057	6,934	6,883	6,744	6,761
Tinian	492	458	439	416	429	419	422	416	413	403	379
Rota	504	459	450	413	432	439	423	413	406	412	402

Source: Island Telecom & Engineering (IT&E)

FIGURE 12.1 - COMMERCIAL PHONE LINES BY ISLAND

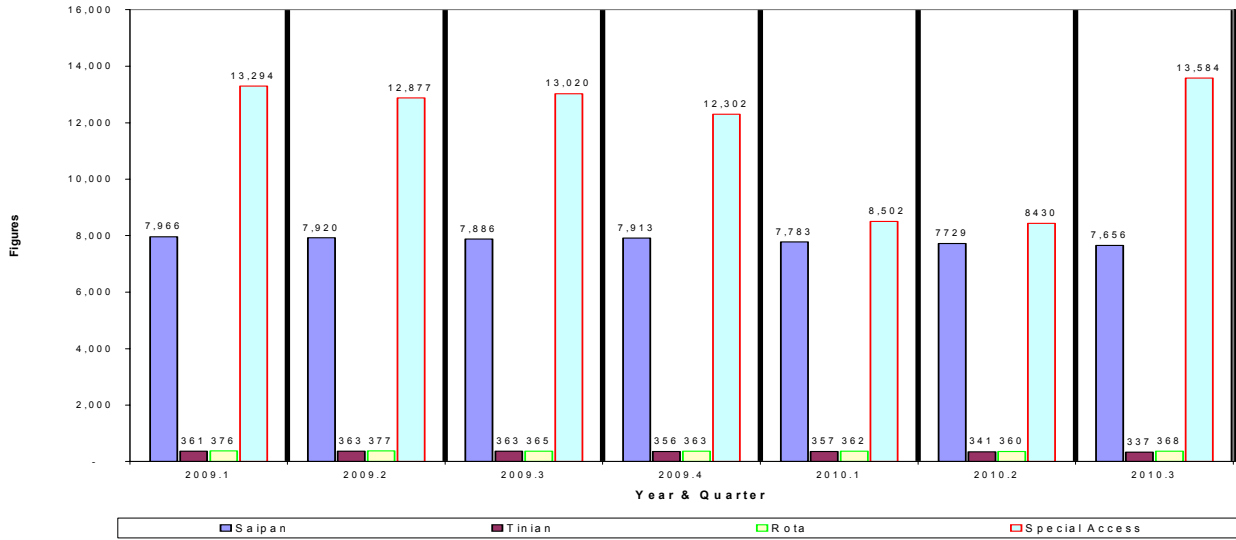


FIGURE 12.2 - RESIDENTIAL PHONE LINES BY ISLAND

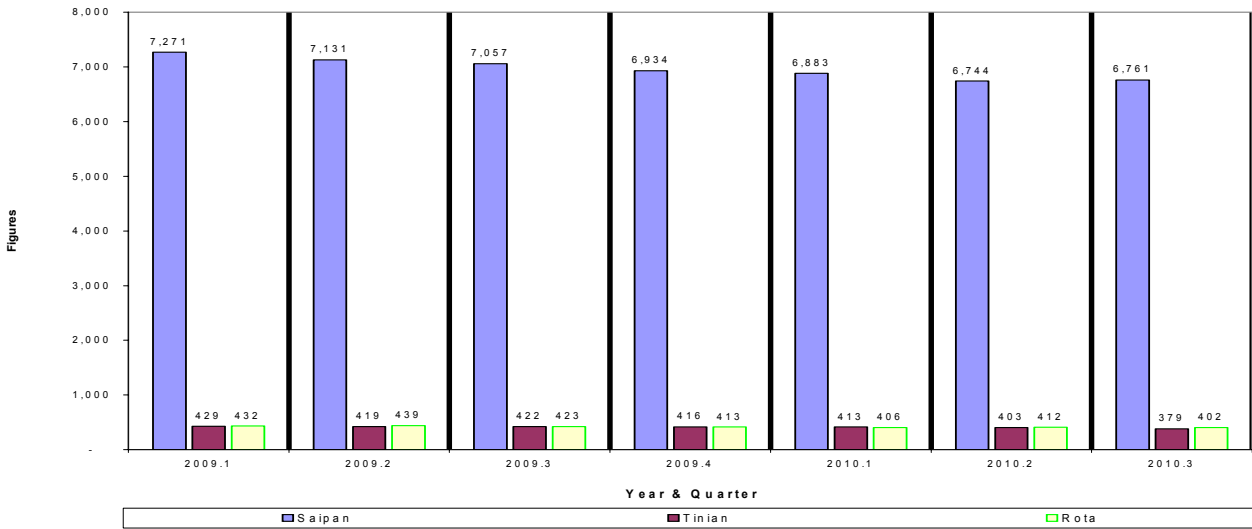


FIGURE 12.3 - COMMERCIAL & RESIDENTIAL PHONE LINES (TOTALS)

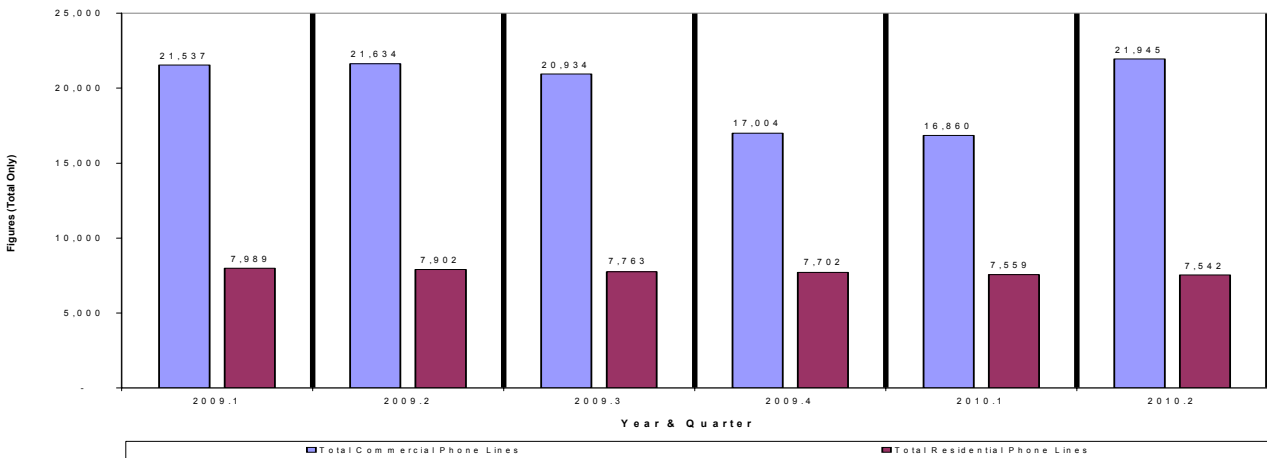


TABLE 13 - BUILDING PERMITS

CNMI Building Permits Issued	Year				Quarter						
	2006	2007	2008	2009	2009.1	2009.2	2009.3	2009.4	2010.1	2010.2	2010.3
Total No. of Permits	292	255	213	120	33	35	33	19	22	41	44
No. of Commercial	125	121	106	55	15	21	11	8	7	26	18
No. of Residential	167	120	105	45	11	10	14	10	13	14	17
No. of Government*		14	15	20	7	4	8	1	2	1	9
Total Value (US \$ Millions)	11.79	16.23	43.99	16.23	2.33	10.14	2.50	1.25	1.02	3.19	7.62
Commercial	3.59	8.96	36.40	2.77	0.74	0.80	0.27	0.95	0.06	1.56	0.82
Residential	7.75	5.06	5.12	3.53	1.00	0.85	1.38	0.30	0.84	1.35	0.77
Government*		2.21	2.47	9.94	0.59	8.49	0.86	0.00	0.12	0.27	6.03

Source: Building Safety Code Division, Department of Public Works
 *Recent Addition to 2007

FIGURE 13.1 - NUMBER OF BUILDING PERMITS ISSUED

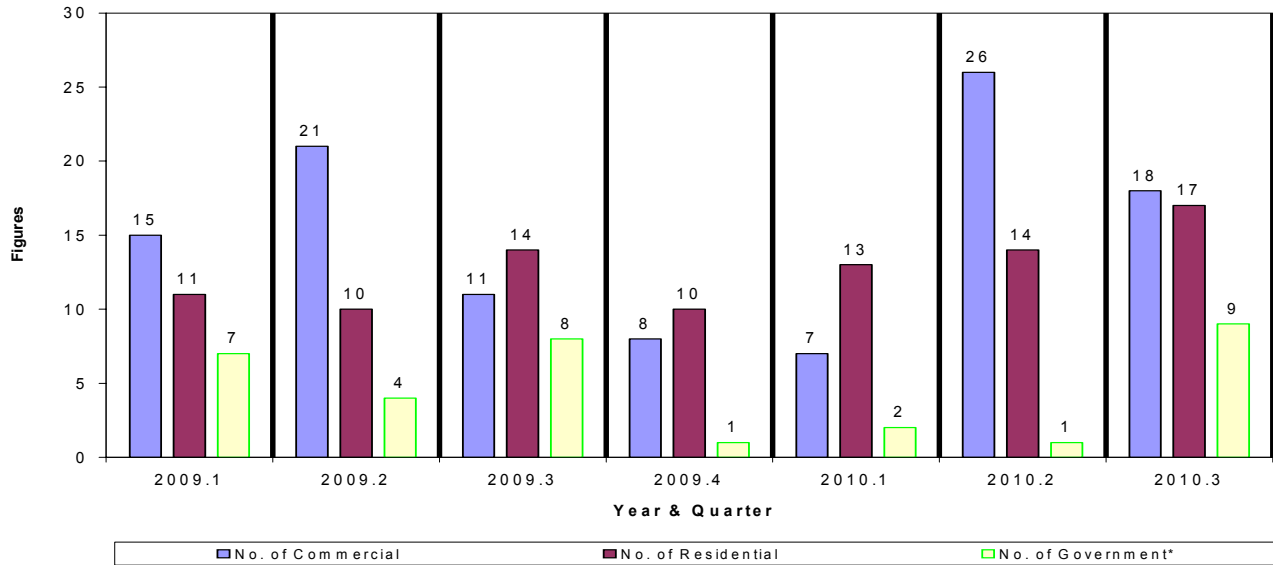


FIGURE 13.2 - VALUES OF BUILDING PERMITS ISSUED (IN MILLIONS)

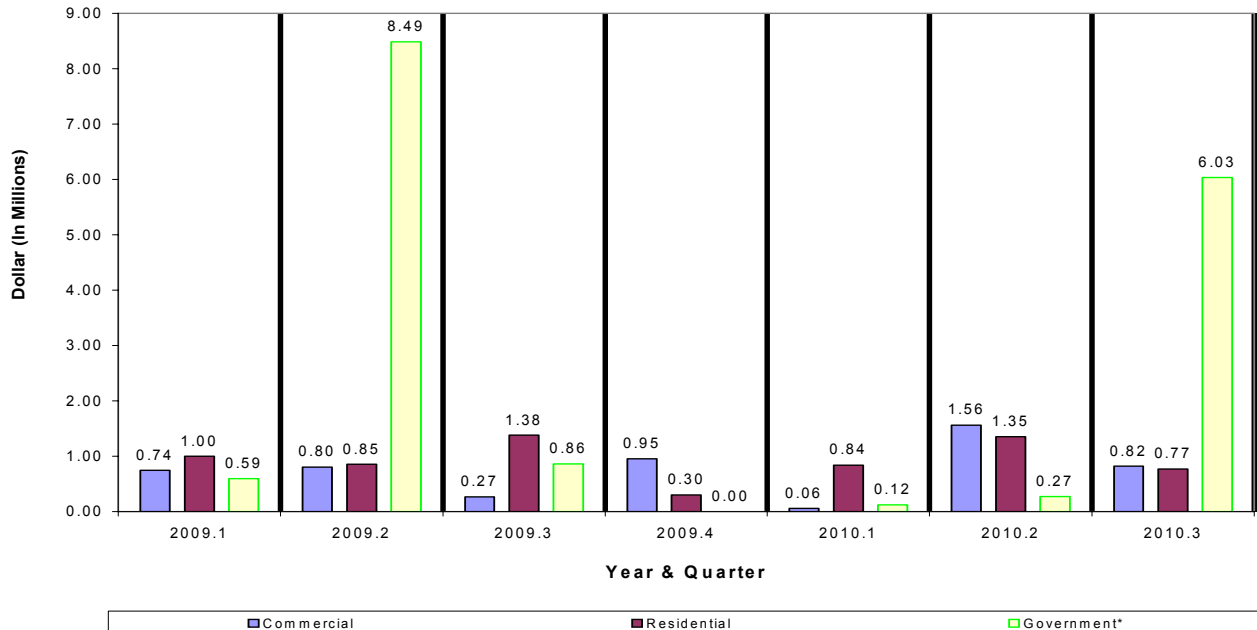


TABLE 14 - CNMI CONSUMER PRICE INDEX

COMMONWEALTH OF THE NORTHERN MARIANA ISLANDS
4th Quarter 2008 = 100

Groups	4th Qtr 2009	3rd Qtr 2009	4th Qtr 2008	To 4th Qtr 09 Fm 3rd Qtr 09	To 4th Qtr 09 Fm 4th Qtr 08
All Items	107.7	103.6	100.0	4.1	7.7
Food	106.1	104.6	100.0	1.5	6.1
Alcoholic Beverages	106.5	106.7	100.0	-0.2	6.5
Housing and Utilities	108.0	97.9	100.0	10.1	8.0
Apparel	104.3	103.5	100.0	0.9	4.3
Transportation	108.5	105.4	100.0	3.1	8.5
Medical Care	101.5	102.3	100.0	-0.8	1.5
Recreation	105.1	104.9	100.0	0.2	5.1
Education and Communication	95.6	95.5	100.0	0.1	-4.4
Other Goods and Services	102.8	102.3	100.0	0.5	2.8

Source: Department of Commerce, Central Statistics Division

TABLE 15 - CNMI CONSUMER PRICE INDEX FOR 9 SELECTED GROUPS

COMMONWEALTH OF THE NORTHERN MARIANA ISLANDS
4th Quarter 2008 = 100

Year & Quarter Wgts	Food	Alcoholic Beverages	Utilities	Apparel	Transportation	Medical Care	Recreation	Education Communication	Other Goods & Services	All Items
2003.1	76.0	87.3	63.3	92.6	94.7	86.8	95.2	96.4	85.7	79.4
2003.2	76.3	87.5	63.3	92.8	94.4	86.8	94.6	96.2	85.7	79.3
2003.3	76.5	87.3	62.8	93.5	94.4	86.8	94.3	96.6	85.7	79.2
2003.4	76.4	87.2	62.0	93.1	95.2	86.8	91.7	96.0	85.7	79.1
2004.1	78.4	87.2	62.3	93.4	95.2	86.8	91.0	96.0	85.7	79.6
2004.2	79.2	87.1	61.9	92.4	95.6	86.8	96.7	96.0	92.8	80.1
2004.3	80.0	87.4	61.7	88.4	94.7	86.8	94.2	95.2	92.8	79.8
2004.4	81.7	87.2	62.1	85.8	94.9	86.8	93.9	97.3	92.8	80.4
2005.1	81.3	87.3	62.2	90.8	95.3	86.8	94.1	94.5	92.8	80.4
2005.2	81.9	88.4	62.2	89.5	95.4	86.8	96.6	94.9	92.9	80.7
2005.3	82.2	88.8	62.3	86.2	95.7	86.9	96.0	96.2	92.9	80.8
2005.4	81.8	88.8	63.8	85.7	95.7	86.7	96.8	97.2	92.9	81.3
2006.1	82.8	89.2	64.8	97.2	96.0	92.3	99.3	97.8	92.9	82.4
2006.2	82.9	89.2	65.5	97.7	96.0	92.3	99.9	97.8	92.9	82.6
2006.3	83.8	89.3	90.7	98.7	96.0	92.3	102.0	97.9	92.9	91.6
2006.4	85.5	89.3	91.2	98.9	96.0	92.3	100.8	98.3	92.9	92.2
2007.1	86.9	92.7	91.5	100.5	96.0	92.3	101.2	98.7	92.9	92.7
2007.2	88.1	92.7	96.7	100.8	96.0	93.3	101.3	98.6	92.9	94.7
2007.3	88.5	92.7	96.7	101.0	96.0	93.3	101.8	98.6	92.9	94.8
2007.4	89.4	93.1	97.0	101.0	96.0	93.3	102.0	98.6	92.9	95.1
2008.1	93.1	95.1	90.6	101.2	96.0	100.0	103.6	98.5	92.9	93.8
2008.2	93.5	95.8	120.2	100.1	99.2	100.0	100.5	98.5	92.9	105.0
2008.3	97.5	99.2	116.3	99.5	95.9	97.1	100.0	99.5	100.0	103.9
2008.4	100.0	100.0	100.0	100.0	100.0	100.0	100.0	100.0	100.0	100.0
2009.1	100.8	106.5	99.1	99.8	100.5	102.8	100.2	96.4	101.7	101.9
2009.2	102.5	106.5	100.4	100.5	104.0	102.8	102.3	96.1	101.6	103.5
2009.3	104.6	106.7	97.9	103.5	105.4	102.3	104.9	95.5	102.3	103.6
2009.4	106.1	106.5	108.0	104.3	108.5	101.5	105.1	95.6	102.8	107.7

Source: Department of Commerce, Central Statistics Division

NOTE: BECAUSE OF ERRORS IN PREVIOUS CPI, WE ARE PROVIDING RECALCULATED HISTORICAL CPI. APPLIES TO ALL QUARTERS TO DATE. CPI DATA FOR ALL QUARTERS IN 2010 AND 2011 FIRST QUARTER WILL BE PROVIDED SOON. ALSO, CPI FOR ROTA AND TINIAN WILL BE PUBLISHED SECOND QUARTER OF 2011.

TABLE 16 - HISTORICAL CPIs FOR SELECTED GROUPS

COMMONWEALTH OF THE NORTHERN MARIANA ISLANDS
4th Quarter 2008 = 100

Year & Quarter	Food	Housing	Apparel & Upkeep	Transportation	Health & Recreation	All Items
Wgts	49.25	19.5	9.1	8.3	13.85	100
1995.1	83.5	63.6	90.6	80.6	66.2	74.4
1995.2	84.3	64.1	90.6	80.7	66.4	74.9
1995.3	84.2	64.0	92.5	84.1	66.1	75.1
1995.4	85.7	63.9	92.5	83.8	66.1	75.6
1996.1	86.6	63.9	94.8	87.0	66.5	76.5
1996.2	85.0	64.3	95.9	87.5	66.5	76.1
1996.3	85.9	64.1	96.2	88.2	69.7	77.4
1996.4	88.2	65.7	96.2	88.9	70.8	78.9
1997.1	86.3	67.5	96.1	89.4	68.8	78.0
1997.2	86.9	67.4	96.6	89.4	68.8	78.2
1997.3	85.9	68.1	96.4	89.5	69.4	78.2
1997.4	85.4	66.9	96.7	90.1	69.5	77.9
1998.1	86.3	65.8	97.3	89.2	69.2	77.9
1998.2	85.7	63.9	97.3	89.6	69.2	77.4
1998.3	86.2	63.8	96.7	93.5	69.1	77.8
1998.4	84.5	64.4	96.7	91.5	73.5	78.5
1999.1	84.8	63.9	98.6	91.1	73.5	78.5
1999.2	84.8	67.2	98.6	90.2	73.4	79.1
1999.3	84.5	67.0	98.6	93.3	73.2	79.1
1999.4	84.5	65.1	101.2	93.7	73.3	79.0
2000.1	84.7	65.3	100.5	91.8	73.2	78.9
2000.2	83.7	65.6	99.4	93.9	80.3	80.9
2000.3	85.3	66.3	99.9	96.0	80.8	82.0
2000.4	82.9	63.8	100.0	96.1	80.4	80.5
2001.1	80.6	64.2	100.0	95.8	80.1	79.6
2001.2	81.6	64.1	99.5	95.3	80.1	79.9
2001.3	81.1	66.0	99.5	94.9	80.0	80.0
2001.4	81.9	64.8	100.4	93.6	79.8	80.0
2002.1	80.6	65.1	99.3	94.2	85.0	81.2
2002.2	78.8	62.3	99.9	95.6	84.8	80.1
2002.3	77.8	64.2	99.7	95.6	84.8	80.1
2002.4	75.7	63.5	94.0	95.9	84.8	78.9

Year & Quarter	Food	Alcoholic Beverages	Utilities	Apparel	Transportation	Medical Care	Recreation	Education Communication	Other Goods & Services	All Items
2003.1	76.0	87.3	63.3	92.6	94.7	86.8	95.2	96.4	85.7	79.4
2003.2	76.3	87.5	63.3	92.8	94.4	86.8	94.6	96.2	85.7	79.3
2003.3	76.5	87.3	62.8	93.5	94.4	86.8	94.3	96.6	85.7	79.2
2003.4	76.4	87.2	62.0	93.1	95.2	86.8	91.7	96.0	85.7	79.1
2004.1	78.4	87.2	62.3	93.4	95.2	86.8	91.0	96.0	85.7	79.6
2004.2	79.2	87.1	61.9	92.4	95.6	86.8	96.7	96.0	92.8	80.1
2004.3	80.0	87.4	61.7	88.4	94.7	86.8	94.2	95.2	92.8	79.8
2004.4	81.7	87.2	62.1	85.8	94.9	86.8	93.9	97.3	92.8	80.4
2005.1	81.3	87.3	62.2	90.8	95.3	86.8	94.1	94.5	92.8	80.4
2005.2	81.9	88.4	62.2	89.5	95.4	86.8	96.6	94.9	92.9	80.7
2005.3	82.2	88.8	62.3	86.2	95.7	86.9	96.0	96.2	92.9	80.8
2005.4	81.8	88.8	63.8	85.7	95.7	86.7	96.8	97.2	92.9	81.3
2006.1	82.8	89.2	64.8	97.2	96.0	92.3	99.3	97.8	92.9	82.4
2006.2	82.9	89.2	65.5	97.7	96.0	92.3	99.9	97.8	92.9	82.6
2006.3	83.8	89.3	90.7	98.7	96.0	92.3	102.0	97.9	92.9	91.6
2006.4	85.5	89.3	91.2	98.9	96.0	92.3	100.8	98.3	92.9	92.2
2007.1	86.9	92.7	91.5	100.5	96.0	92.3	101.2	98.7	92.9	92.7
2007.2	88.1	92.7	96.7	100.8	96.0	93.3	101.3	98.6	92.9	94.7
2007.3	88.5	92.7	96.7	101.0	96.0	93.3	101.8	98.6	92.9	94.8
2007.4	89.4	93.1	97.0	101.0	96.0	93.3	102.0	98.6	92.9	95.1
2008.1	93.1	95.1	90.6	101.2	96.0	100.0	103.6	98.5	92.9	93.8
2008.2	93.5	95.8	120.2	100.1	99.2	100.0	100.5	98.5	92.9	105.0
2008.3	97.5	99.2	116.3	99.5	95.9	97.1	100.0	99.5	100.0	103.9
2008.4	100.0	100.0	100.0	100.0	100.0	100.0	100.0	100.0	100.0	100.0
2009.1	100.8	106.5	99.1	99.8	100.5	102.8	100.2	96.4	101.7	101.9
2009.2	102.5	106.5	100.4	100.5	104.0	102.8	102.3	96.1	101.6	103.5
2009.3	104.6	106.7	97.9	103.5	105.4	102.3	104.9	95.5	102.3	103.6
2009.4	106.1	106.5	108.0	104.3	108.5	101.5	105.1	95.6	102.8	107.7

Source: Department of Commerce, Central Statistics Division

NOTE: BECAUSE OF ERRORS IN PREVIOUS CPI, WE ARE PROVIDING RECALCULATED HISTORICAL CPI. APPLIES TO ALL QUARTERS TO DATE. CPI DATA FOR ALL QUARTERS IN 2010 AND 2011 FIRST QUARTER WILL BE PROVIDED SOON. ALSO, CPI FOR ROTA AND TINIAN WILL BE PUBLISHED SECOND QUARTER OF 2011.

LIST OF CONTRIBUTORS

Agency		Contact Number
Commonwealth Auto-Dealer Association	CADA	234-5911
Commonwealth Ports Authority	CPA	664-3555/3553
Department of Commerce	DOC	664-3044/3023
Department of Finance	DOF	664-1186
Department of Public Works	DPW	235-5827/9570
Hotel Association of Northern Mariana Islands	HANMI	233-3773/6964
Marianas Visitor Authority	MVA	664-3230
Island Telecom & Engineering	IT&E	682-2612